

Product datasheet for RC214687

PATJ (NM_176877) Human Tagged ORF Clone

Product data:

Product Type:	Expression Plasmids
Product Name:	PATJ (NM_176877) Human Tagged ORF Clone
Tag:	Myc-DDK
Symbol:	PATJ
Synonyms:	Cipp; hINADL; InaD-like; INADL
Mammalian Cell Selection:	Neomycin
Vector:	pCMV6-Entry (PS100001)
E. coli Selection:	Kanamycin (25 ug/mL)
ORF Nucleotide Sequence:	>RC214687 representing NM_176877 Red=Cloning site Blue=ORF Green=Tags(s)

TTTTGTAATACGACTCACTATAGGGCGGCCGGAATTCGTCGACTGGATCCGGTACCGAGGAGATCTGCC
GCC**CGATCGCC**

ATGCCTGAAAATCCTGCTACAGATAAACTGCAGGTGCTGCAGGTAATGATCGCCTGAAAATGAAATTGC
AGGAGAAGGGTGACACGTCGAGAATGAGAAGTTATCTATGTTTTATGAGACTAAAGAGTCTCTCTT
CAACCAGATACTCACACTTCAGCAGTCCATCAAGCAACTGAAGGGTCACTCAACCATATACCTCAGAT
TGTTCCAGCAACTTTGATTTTTCTAGGAAAGTTTGTAGTGTTACAGATGGTTCATTACTAATGGAA
ATGTCCACAGGCCCTCTAATAACTCGACTGTATCTGGGTTATTTCCGTGGACCCGAAGTTGGGAAATGA
AGACTTTAACTCAGTCATTCAACAGATGGCTCAGGGCCGCAAAATGAATATATAGATATAGAACGGCCT
TCAACTGGAGGCCCTTGATTGAGTGTGGTGGCCCTCAGAAGTCAAAATCTCGGAAAAGTTGATATCTTCG
TGAAGGATGTCCAGCCAGGGAGTGTAGCAGACAGGGATCAAAGATTAAGGAAAATGATCAAATATTGGC
CATTAATCACACGCCATTGGATCAGAACATTTCCCATCAGCAAGCAATTGCATTATTACAACAAACCACT
GGATCTTTGAGACTGATTGTGGCCAGGGAACAGTCCACACAAAAAGCAGTACTTCTAGCAGCCTAAATG
ATACAACCTGCCTGAAACAGTTTGTGGGGCCATGTTGAAGAGGTTGAGCTCATTAAATGATGGCTCTGG
ACTAGGTTTTGGAATAGTTGGAGGAAAAACAAGTGGCGTGGTTGTGAGGACTATAGTTCTGGAGGATTA
GCAGATCGAGATGGAAGACTCCAGACAGGGGACCACATCTGAAGATTGGTGGCACAACGTGCAGGGGAA
TGACCAGTGAGCAAGTTGCACAAGTTCTAAGGAACTGTGGAAATTCAGTCAGGATGCTCGTTGCTAGAGA
TCCAGCTGGTGACATTTAGTCACCCCCCTGCCCTGCAGCCTTACCTGTTGCCCTGCCTACTGTAGCC
AGCAAGGGCCCTGGTTCTGACAGTTCTTTTTGAACTTATAATGTTGAGCTTGTGAGAAAAGATGGGC
AGAGTCTTGAATTAGAATTGTTGGCTATGTTGGAACATCTCATACAGGGGAAGCTTCAGGGATTTATGT
GAAAAGTATAATACCTGGCAGTGTGCGTACCACAATGGCCACATTAAGTGAATGACAAAATAGTTGCT
GTCGATGGCGTGAACATTAGGGTTTTGCCAACCATGATGTTGTTGAAGTATTACGAAATGCAGGGCAGG
TGGTACACCTAACCTAGTTGGAAGGAAGACATCTCATCTACTTCTCCACTGAACCACCTTCAGACAG
AGGAACTGTTGTAGAACCCTGAAACCACAGCTCTTTCTAACTGGAGCAGTGGAAACTGAAACTAAT



[View online »](#)

GTGGATGGTGAAGATGAGGAAATTAAGAAAGAATTGATACTTTAAAAATGACAACATACAAGCCTTAG
AAAAATTGGAAAAAGTCCAGACTCTCCAGAAAATGAGCTGAAATCCAGATGGGAAAACCTGTTGGGTCC
TGATTATGAAGTAATGGTTGCTACTTTGGACACACAGATTGCAGATGATGCTGAGTTACAGAAAATTTCA
AAGCTGCTGCCTATTCACACTCTGAGGCTTGGTGTGGAAGTGGATTCTTTGATGGGCACCATTATATTT
CTTCAATTGTTTCTGGTGGTCTGTTGATACATTGGGTCTCTACAGCCAGAAGATGAGCTGCTTGAGGT
CAATGGCATGCAGCTTTATGAAAATCTCGCCGAGAAGCAGTCTCCTTTCTTAAAGAAGTGCCACCCCT
TTACTTTGGTTTGTCTGCGGAGGTTGTTGATGATGAAGCTTCTGTAGATGAACCAAGGCGCACTGAAA
CCTCTCTTCTGAGACAGAGGTTGACCACAATATGGATGTCAATACTGAAGAAGATGATGATGGGAATT
AGCACTGTGGTCCCCTGAAGTCAAGATTGTTGAACTAGTAAAAGATTGTAAGGTTTGGGATTACAGCATT
TTGGATTACCAGGACCCTTTAGATCCTACAAGATCAGTGATTGTGATCCGCTCCCTGGTAGCAGATGGTG
TAGCAGAAAGAAGTGGGGACTATTACCTGGAGACCGCTGGTCTCAGTCAATGAATACTGTTTGGACAA
CACCTCACTTGTGAAGCTGTGGAATATTGAAAGCTGTGCCACCAGGCTAGTACACCTGGCATCTGT
AAGCCTTGGTGAAGATAATGAAGAAGAAAGTGTATATTTTACATCAAGCAGTAATGAAGACAAGA
CTGAATTTTCAAGAAACAATTCATGATATAAATTCATCTTAATACTCGAAGCACCAAGGGATTTAGAGA
TGAACCATATTTTAAAGAAGAAGTGTGGATGAACCATTTCTAGATCTGGGAAAGCTTTCCATTCCCAA
CAAAAAGAGATAGAGCAAGCAAGGAGGCTGGGAGATGCATGAATTTCTGACTCCTAGATTGCAGGAAA
TGGATGAAGAAAGAGAAATGCTTGTGATGAAGAATATGAGTTATATCAAGATCCCTCACCATCCATGGA
GTTGTATCCCTTGTGCGACATTCAGAGGCCACTCCTGTGCCCTCTGTGAATGAACCTTACTTTGGTACA
CAGTGGTTGCATGATAATGAACCATCCGAGTCTCAAGAGGCAAGAACCGGGAGGACTGTCTATCCCAAG
AGGCACAGCCGTATGGCTATTGCCCTGAAAATGTGATGAAAGAAAATTTGTGATGGAGTCCCTACCATC
TGTACCATCAACTGAAGGAAACAGTCAACAAGGCAGATTGACGACCTGGAAAATCTTAATTCATTAGCA
AAAAGTGTCTGGATTTAGGCATGATCCGAATGATGTCCAAGGCTCTAGCTTGTGACTTACCTTCCCTG
TTGTGGCTCAAAGGAGGGAGCAAGAAGATTTGCCTTTATATCAACACCAAGCGACACGAGTTATTTCCAA
GGCCTCAGCATACACAGGAATGTTGCTCTAGATATGCCACTGATACATGTGAGTTACCTGAGAGAGAA
GAAGGCGAAGGAGAAGAACTCCAAATTTAGCCACTGGGGTCCACCGAGAATTGTTGAGATTTTTAGAG
AACCCAATGTGTCTCTTGGGATCAGTATTGTTGGTGGACAAAAGTGTATAAAAAGTCTAAAGAATGGAGA
GGAGCTTAAAGGTATATTCATCAAAAGTTTTGAAGACAGTCCAGCAGGGAAGACGAACGCACCTAAA
ACTGGAGATAAAATACTTGAAGTGTCTGGAGTAGATTTGCAGAATGCCTCACACAGCGAAGCAGTTGAGG
CCATTAAGAATGCAGGAAACCTGTGGTGTTCATTGTTCCAGAGTTTGTCCACTCCACGAGTCATTCC
TAACGTACATAACAAGGCCAACAAAATCACCGGTAAACCAGAACCAGGACACCCAAGAAAAGAAAAG
AGGCAAGGAACTGCTCCACCGCAATGAAACTTCTCCTCTTATAAAGTCTGACTGATGACAGTGATG
AAAATGAAGAAGAAGATGCCTTTACCGACCAAAAATCAGACAAAAGATATGCAGATCTGCCTGGAGAAGT
GCACATTATTGAACCTGAAAAAGATAAGAATGGACTTGGACTCAGCCTTGTGGTAAATAAAGACCGATCA
CGCATGAGCATATTTGGTGGGAAATTAACCCGGAAGGACCTGCTGCCGAGATGGACGAATGCGTATTG
GAGATGAACTCTTAGAGATAAACAATCAGATTCTGTATGGAAGAAGTCAACAAAATGCATCTGCCATTAT
TAAGACTGCCCATCAAAGGTCAAGCTGGTTTTTCATCAGAAACGAGGATGCAGTCAATCAGATGGCCGT
ACTCCCTTCCAGTGCCATCAAGTCTCCATCTCTATTGAGGATCAGAGCGGCACCGAACCTATTAGTA
GTGAGGAAGATGGCAGCGTGAAGTGGTATTAACAATTGCCTGAAAGTGAAGCTTCAAACCTGGCTGT
CAGCCAGATGAAACAGCAAAAATATCCAACAAAAGTCTCCTTCAGTTCACAAGAGATACCATTAGCACA
GCTTCATCATACCATTAACAGATGCAGACTTACAGGCTATGGTGGTTTCCAGGCTCCTGTGTCAGTGG
ACCCCGCAACGTGTCCATTGTCCCTGGACAGGAAATGATTATAGAAATATCCAAGGGACGTTACAGGCT
TGGTCTCAGCATTGTGGGAGGAAAAGACACACCCTTGAATGCTATAGTTATCCATGAAGTCTATGAAGAA
GGGGCAGCAGCCAGAGATGGAAGACTTTGGGCTGGTGACCAGATATTAGAGGTTAATGGGGTTGACCTGA
GGAATCCAGCCAGAAAGCCATCACAGCCCTGAGGCAGACCCCCAGAAAGTGCAGGCTGGTGGTGTGTA
TAGAGATGAGGCACACTACCGGATGAGGAGAAGTGGAGATTTTCCCTGTGGATCTGCAGAAGAAAGCT
GGCCGGGGCTGGCCTGAGCATCGTTGGGAAACGAAATGGAAGCGGAGTGTATTTCTGACATCGTGA
AAGGCGGAGCCGACAGCTGGATGGGAGATTGATTCAGGGAGATCAGATCTTATCTGTGAATGGGGAGGA
CATGAGAAATGCCTCACAGGAGACAGTGGCCACCATCCTCAAGTGTGCACAGGGACTTGTGCAGCTAGAG
ATTGGAAGACTCCGAGCTGGTTCCTGGACCTCCGCAAGGACGACATCACAGAACAGTCAGGGTAGTCAGC
AGAGTGCACACAGCAGCTGTATCCCTCCTTCCGCTCCTGTCTACTGGCCTGCAAAAACCTGGTTGGCAC
AAAAGAGTTTTCAGATCCTTCCCAGAAAATTCAGGCACAGATATGGAACCAAGGACTGTTGAGATAAAC
AGGGAGCTCAGTATGCCCTTGGAAATCAGTATTGCTGGAGGAAGAGGAAGTCCCTTAGGAGATATCCCCG

TATTTATTGCCATGATTCAGGCTAGCGGAGTGGCCGCACGGACACAGAAGCTTAAAGTTGGAGATCGGAT
 TGT CAGCATT AACGGCAACCTTTGGATGGGCTGTCTACGCGGATGTGGTTAATCTGCTGAAGAACGCC
 TACGGGCGCATTATCCTGCAGGTTGTAGCAGATACCAATATAAGCGCCATAGCAGCTCAGCTTAAAAACA
 TGTCTACAGGCTACCACCTTGGTTCCGCCACTGCTGAACACCATCCAGAAGACACAGAGGAGCAGCTGCA
 GATGACGGCCGAT

ACGCGTACGCGGCGCTCGAGCAGAACTCATCTCAGAAGAGGATCTGGCAGCAAATGATATCCTGGATT
 ACAAGGATGACGACGATAAGGTTTAA

Protein Sequence:

>RC214687 representing NM_176877
 Red=Cloning site Green=Tags(s)

MPENPATDKLQVLQVLDRLKMKLQEKGDTSQNEKLSMFYETLKSPLFNQILTLQQSIKQLKGQLNHIPSD
 CSANFDFSRKGLLVFTDGSITNGNVHRPSNNSTVSGLFPWTPKLGNEDFNSVIQQMAQGRQIEYIDIERP
 STGGLGFSVVALRSQNLGKVDIFVKDVQPGSVADRDQRLKENDQILAINHTPLDQNI SHQQAIAL LQQT
 GSLRLIVAREPVHTKSSTSSSLNDTTLPETVCWGHVEEVELINDGSLGFGIVGGKTSVVVRTIVPGL
 ADRDGRQLQTDHILKIGGTNVQGMTSEVAQVLRNCGNSVRMLVARDPAGDISVTPPAPAALPVALPTVA
 SKGPGSDSSLFETYNVELVRKDGQSLGIRIVGYVGTSHTEASGIYVKSIPGSAAYHNHGIQVNDKIVA
 VDGVNIQGFANHDVVEVLRNAGQV VHL TLVRRKTSSTSPLEPPSDRGT VVEPLKPPALFLTGAVETETN
 VDGEDEEIKERIDTLKNDNIQALEKLEKVPD SPENELKSRWENLLGPDYEMVATLDTQIADDAELQKYS
 KLLPIHTLRLGVEVDSFDGHHYISSIVSGGPVDLGLLQPEDELLEVNQMQLYKSRREAVSFLKEVPPP
 FTLVCCRRFLDDEASVDEPRRETSLPETEVDHNMVDNTEEDDDGELALWSPEVKIVELVKDCKGLGFSI
 LDYQDPLDPTRSVIVIRSLVADGVAERSGGLPGDRLVSVNEYCLDNTSLAEAVEILKAVPPGLVHLGIC
 KPLVEDNEEESCILHSSNEDKTEFSGTIHDINSSILEAPKGRFDEPYFKEELVDEPFLDLGKSFHSQ
 QKEIEQSKAEWMEHFLTPRLQEMDEEREMLVDEEYELYQDPSPSMELYPLSHIQEATPVPSVNLHFGT
 QWLHDNEPSESQEARTGRTVYSQEAQPYGYCPENVMKENFVMSLPSVSPSTEGNSQQGRFDDLENLSLA
 KTSLDLGMIPNDVQGPSLLIDL PVVAQRREQEDLPL YQHQA TRVISKASAYTGMLSSRYATDTCELPERE
 EGEGETPNF SHWGPRIIVEIFREP NVSLGISIVGGQTVIKRLKNGEELKGFIFIKQVLEDS PAKTNALK
 TGDKILEVSGVDLQNASHEAVEAIKNAGNPVVFIVQSLSSTPRVIPNVHNKANKITGNQNDTQEKKEK
 RQGTAPPPMKLPPYKAL TDDSDENEEDAF TDQKIRQRYADLPGELHIELEKDKNGLGLSLAGNKDRS
 RMSIFVVGINPEGPAAADGRMRIGDELLEINNQILYGRSHQNASAIKTA PSKVKL V FIRNEDAVNQMAV
 TPFVPPSSSPSSIEDQSGETPISSEEDGSVEVGKQLPESESKLAVSQMKQKQYPTKVSFSSEIPLAP
 ASSYHSTDADFTGYGGFQAPLSVDPATCPIVPGQEMIIEISKGRSGLGLSIVGGKDTPLNAIVIHEVYEE
 GAAARDGRLWAGDQILEVNGVDLRNSSHEEAITALRQTPQKVRLVYRDEAHRDEENLEIFPVDLQKKA
 GRGLGLSIVGKRNGSGVFI SDIVKGAADLDGRLIQGDQILSVNGEDMRNASQETVATILKCAQGLVQLE
 IGRLRAGSWTSARTTSQNSQGSQSAHSSCHPSFAPVITGLQNLVGTKRVSQKNSGTMEDMEPRTVEIN
 RELSDALGISIAGGRGSPLGDIPVFIAMIQASGVAARTQKLVGDRIVSINGQPLDGLSHADVNNLLKNA
 YGRIILQVVADTNI SAIAAQLNMSTGYHLGSPTAEHHPEDTEEQ LQMTAD

TRTRPLEQKLISEEDLAANDILDYKDDDDKV

Chromatograms:

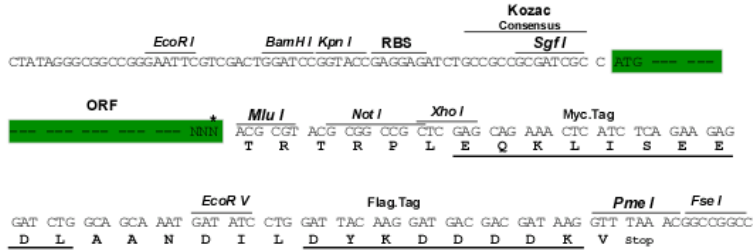
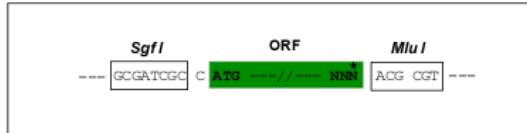
https://cdn.origene.com/chromatograms/mk8030_e01.zip

Restriction Sites:

Sgfl-Mlul

Cloning Scheme:

Cloning sites used for ORF Shuttling:



* The last codon before the Stop codon of the ORF

ACCN: NM_176877

ORF Size: 5403 bp

OTI Disclaimer: The molecular sequence of this clone aligns with the gene accession number as a point of reference only. However, individual transcript sequences of the same gene can differ through naturally occurring variations (e.g. polymorphisms), each with its own valid existence. This clone is substantially in agreement with the reference, but a complete review of all prevailing variants is recommended prior to use. [More info](#)
OTI Annotation: This clone was engineered to express the complete ORF with an expression tag. Expression varies depending on the nature of the gene.

Components: The ORF clone is ion-exchange column purified and shipped in a 2D barcoded Matrix tube containing 10ug of transfection-ready, dried plasmid DNA (reconstitute with 100 ul of water).

Reconstitution Method:

1. Centrifuge at 5,000xg for 5min.
2. Carefully open the tube and add 100ul of sterile water to dissolve the DNA.
3. Close the tube and incubate for 10 minutes at room temperature.
4. Briefly vortex the tube and then do a quick spin (less than 5000xg) to concentrate the liquid at the bottom.
5. Store the suspended plasmid at -20°C. The DNA is stable for at least one year from date of shipping when stored at -20°C.

RefSeq: [NM_176877.2](#), [NP_795352.2](#)

RefSeq Size: 8505 bp

RefSeq ORF: 5406 bp

Locus ID: 10207

Cytogenetics: 1p31.3

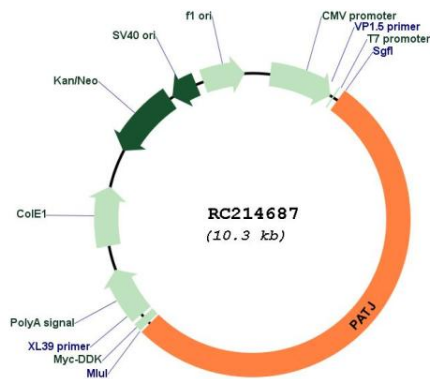
Protein Families: Druggable Genome

Protein Pathways: Tight junction

MW: 196.2 kDa

Gene Summary: This gene encodes a protein with multiple PDZ domains. PDZ domains mediate protein-protein interactions, and proteins with multiple PDZ domains often organize multimeric complexes at the plasma membrane. This protein localizes to tight junctions and to the apical membrane of epithelial cells. A similar protein in Drosophila is a scaffolding protein which tethers several members of a multimeric signaling complex in photoreceptors. [provided by RefSeq, Jul 2008]

Product images:



Circular map for RC214687