

Product datasheet for **RC214683**

IKB epsilon (NFKBIE) (NM_004556) Human Tagged ORF Clone

Product data:

Product Type:	Expression Plasmids
Product Name:	IKB epsilon (NFKBIE) (NM_004556) Human Tagged ORF Clone
Tag:	Myc-DDK
Symbol:	IKB epsilon
Synonyms:	IKBE
Mammalian Cell Selection:	Neomycin
Vector:	pCMV6-Entry (PS100001)
E. coli Selection:	Kanamycin (25 ug/mL)



[View online »](#)

ORF Nucleotide Sequence:

>RC214683 representing NM_004556
 Red=Cloning site Blue=ORF Green=Tags(s)

TTTTGTAATACGACTCACTATAGGGCGGCCGGAATTCGTCGACTGGATCCGGTACCGAGGAGATCTGCC
 GCC**CGGATCGCC**

ATGAATCAACGAAGGAGTGAGTCAAGGCCCGGAACCACAGACTCCAAGCCTACGCAGAGCCGGGAAGG
 GGGATTCGAGAGGGCGGGCCTTTCCGGAAGCGCCCGGGGGCGGGAGGGGGCGGGGCCATCCG
 CGTGAGGCGACCTGTTGGTCCGAGGGGCGGGCGAGGAGGAGGACCCGCTTGGCGGTTCCGGCTGCC
 ACAGTAACCGCTGGTGGACCTGGCCAGCGCTCCGAACCTTGTCTCGCTGCGCGCCGGCCCTCGGAGC
 CCCACAGCCCGGAAGGAGGCGCCGCGGGCGGGCGCCGCTCTGCCAAGCGGACCCGCAACCCGGAAA
 GGGCGCGGGCGGAGCCTGGAGCCGGATCTGCTCAGACCGGGCCCGGGCGGCCAGAGCCGCGGGCATG
 TCGGAGGCGGGAAGGGGCGGACGAGGCGGAGGAGCCAGTACGACTTGGCATTGAGTCTCTGCGCT
 CTCTGCGCTCCCTACCCGAGTCCACCTCGGCTCCAGCCTCCGGGCCCTCGGACGGCAGCCCCAGCCCTG
 CACCCATCTCCGGGACCCGTAAGGAACCACAGGAGAAGGAAGACGCGGATGGGGAGCGGGCTGATTCC
 ACCTATGGCTCCTCCTCGCTCACCTACACCCTGTCTTGTGGGGGGCCCGAGGCTGAGGACCCGGCCC
 CACGCCTGCCACTCCCCACGTGGGGCGCTGAGCCCTCAGCAGCTGGAAGCACTCACTTACATCTCCGA
 GGACGGAGACACGCTGGTCCACCTGGCAGTGATTCATGAGGCCAGCGGTGCTGCTGTGTGCCTGGCT
 TTGCTGCCCCAGGAGTCTGGACATTCAAAATAACCTTTACCAGACAGCACTCCATCTGGCTGTACATC
 TGGACCAACCGGGCGCAGTTCGGGCACTGGTGTGAAGGGGGCCAGCCGGGCACTACAGGACCGGCATG
 TGACACAGCCCTTCATGTGGCTGCCAGCGCCAGCACTGGCCTGTGCCCGCTGCCTGTGAAGGGCGG
 CCAGAGCCAGGCAGAGGAACATCTACTCTGGACCTCAGCTGCAAACTGGCAAGGTCTGGCTTGTCT
 TCCACATTGCCACCCCTCAGAAGAACAACCACTCATGGAATTGCTGCTTGGAAATGGAGTGACATTGA
 TGTGCAGGAGGGCACAGTGGTAAGACAGCGCTGCACCTGGCTGTGAAACCCAAGAGCGGGCCTGGTA
 CAGTTCCTGCTCCAGGCTGGTGGCCAGGTAGATGCCCGCATGCTGAACGGGTGCACACCCCTGCACCTGG
 CAGCTGGCCGGGTCTCATGGGCATCTCATCCACTCTGTGCAAGGCGGGTGTGACTCCCTGCTGCGGAA
 TGTGGAGGATGAGACGCCCCAGGACCTGACTGAGGAATCCCTTGTCTTTGCCCTTTGATGACCTGAAG
 ATCTCAGGGAACTGCTGCTGTGTACCGAC

ACGCGTACGCGGCCGCTCGAGCAGAACTCATCTCAGAAGAGGATCTGGCAGCAAATGATATCTGGATT
 ACAAGGATGACGACGATAAGGTTTAA

Protein Sequence:

>RC214683 representing NM_004556
 Red=Cloning site Green=Tags(s)

MNQRRESRPNHRLQAYAEPKGDSSGAGPLSGSARRGRGGGAIRVRRPCWSGGAGRGGGPAWAVRLP
 TVTAGWTWPALRTLSSLRAGPSEPHSPGRRPRPRAGRPLCQADPQPKAARRSLEPDPAQTGPRPARAAGM
 SEARKGPDEAEESQYDSGIESLRSLRSLPESTSAPASGPSDQSPQCTHPPGPVKEPQEKEADGERADS
 TYGSSSLTYTLLGGPEAEDPAPRLPLPHVGLSPQQLREALTYISEDGDTLVHLAVIHEAPAVLLCCLA
 LLPQEVLDIQNNLYQTALHLAVHLDQPGAVRALVLKASRALQDRHGDTALHVACQRQHLACARCLLEGR
 PEPGRGTSLSLDLQLNWQGLACLHIATLQKNQPLMELLLRNGADIDVQEGTSGKTALHLAVETQERGLV
 QFLLQAGAQVDARMLNGCTPLHLAAGRGLMGISSTLCKAGADSLLRNVEDETPQDLTEESLVLLPFDDLK
 ISGKLLLCD

TRTRPLEQKLISEEDLAANDILDYKDDDDKV

Chromatograms:

https://cdn.origene.com/chromatograms/mk8115_c06.zip

Restriction Sites:

SgfI-MluI

Cloning Scheme:


ACCN: NM_004556

ORF Size: 1500 bp

OTI Disclaimer: The molecular sequence of this clone aligns with the gene accession number as a point of reference only. However, individual transcript sequences of the same gene can differ through naturally occurring variations (e.g. polymorphisms), each with its own valid existence. This clone is substantially in agreement with the reference, but a complete review of all prevailing variants is recommended prior to use. [More info](#)

OTI Annotation: This clone was engineered to express the complete ORF with an expression tag. Expression varies depending on the nature of the gene.

Components: The ORF clone is ion-exchange column purified and shipped in a 2D barcoded Matrix tube containing 10ug of transfection-ready, dried plasmid DNA (reconstitute with 100 ul of water).

- Reconstitution Method:**
1. Centrifuge at 5,000xg for 5min.
 2. Carefully open the tube and add 100ul of sterile water to dissolve the DNA.
 3. Close the tube and incubate for 10 minutes at room temperature.
 4. Briefly vortex the tube and then do a quick spin (less than 5000xg) to concentrate the liquid at the bottom.
 5. Store the suspended plasmid at -20°C. The DNA is stable for at least one year from date of shipping when stored at -20°C.

RefSeq: [NM_004556.2](#), [NP_004547.2](#)

RefSeq Size: 2581 bp

RefSeq ORF: 1086 bp

Locus ID: 4794

UniProt ID: [O00221](#)

Cytogenetics: 6p21.1

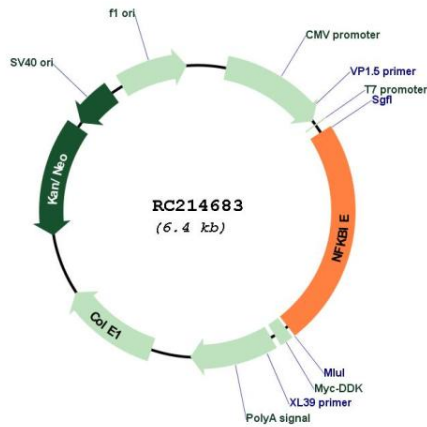
Protein Families: Druggable Genome, Transcription Factors

Protein Pathways: Adipocytokine signaling pathway, B cell receptor signaling pathway, Neurotrophin signaling pathway, T cell receptor signaling pathway

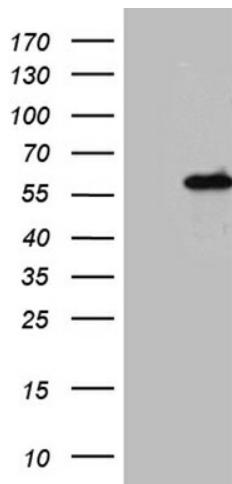
MW: 52.7 kDa

Gene Summary: The protein encoded by this gene binds to components of NF-kappa-B, trapping the complex in the cytoplasm and preventing it from activating genes in the nucleus. Phosphorylation of the encoded protein targets it for destruction by the ubiquitin pathway, which activates NF-kappa-B by making it available to translocate to the nucleus. [provided by RefSeq, Sep 2011]

Product images:



Circular map for RC214683



HEK293T cells were transfected with the pCMV6-ENTRY control (Cat# [PS100001], Left lane) or pCMV6-ENTRY NFKBIE (Cat# RC214683, Right lane) cDNA for 48 hrs and lysed. Equivalent amounts of cell lysates (5 ug per lane) were separated by SDS-PAGE and immunoblotted with anti-NFKBIE (Cat# [TA810713])(1:2000).