

## Product datasheet for RC214676

### Stella (DPPA3) (NM\_199286) Human Tagged ORF Clone

#### Product data:

Product Type:	Expression Plasmids
Product Name:	Stella (DPPA3) (NM_199286) Human Tagged ORF Clone
Tag:	Myc-DDK
Symbol:	Stella
Synonyms:	Pgc7; STELLA
Mammalian Cell Selection:	Neomycin
Vector:	pCMV6-Entry (PS100001)
E. coli Selection:	Kanamycin (25 ug/mL)
ORF Nucleotide Sequence:	>RC214676 ORF sequence Red=Cloning site Blue=ORF Green=Tags(s)

TTTTGTAATACGACTCACTATAGGGCGGCCGGAATTCGTCGACTGGATCCGGTACCGAGGAGATCTGCC  
 GCCCGCATCGCC

ATGGACCCATCACAGTTTAATCCAACCTACATCCCAGGGTCTCCACAAATGCTCACCGAAGAAAATTCCC  
 GGGACGATTCAGGGGCCTCTCAAATCTCCTCCGAGACGTTGATAAAGAACCTTAGTAACCTGACTATCAA  
 CGCTAGTAGCGAATCTGTTTCCCTCTATTGGAAGCTTTACTCCGTCGAGAGTCTGTGGGGCAGCAGTC  
 CTCAGGGAATCGAAGATGAGTGGCTTTACAGCAGGAGAGGAGTAAGAACAAGTCTGTCTGTGCAGAGAG  
 AAAAGATGGCAAGATTGAGATACATGTTACTGGCGGAGTTCGTACGCATGAAAGAAGACCAACAAACAA  
 GGAGCCTAAGGGAGTTAAGAAGGAATCAAGACCATTCAAATGTCCCTGCAGTTTCTGCGTGTCTAATGGA  
 TGGGATCCTTCTGAGAATGCTAGAATAGAGAATCAAGACCAAGCCACTTCAGCCA

ACGCGTACGCGGCCGCTCGAGCAGAACTCATCTCAGAAGAGGATCTGGCAGCAAATGATATCCTGGATT  
 ACAAGGATGACGACGATAAGGTTTAA

Protein Sequence:	>RC214676 protein sequence Red=Cloning site Green=Tags(s)
-------------------	--

MDPSQFNPTYIPGSPQMLTEENSRDDSGASQISSETLIKNLNLTINASSESVSPLLEALLRRESVGAAY  
 LREIEDEWLVSRRGVRTLLSVQREKMARLRYMLLGGVTRHERRPTNKEPKGVKKESRPFKPCSFVCSNG  
 WDPSNARIENQDTKPLQP

TRTRPLEQKLISEEDLAANDILDYKDDDDKV

Chromatograms:	<a href="https://cdn.origene.com/chromatograms/mk6455_a04.zip">https://cdn.origene.com/chromatograms/mk6455_a04.zip</a>
----------------	---


[View online »](#)

Restriction Sites: SgfI-MluI

Cloning Scheme:



ACCN: NM\_199286

ORF Size: 477 bp

OTI Disclaimer: The molecular sequence of this clone aligns with the gene accession number as a point of reference only. However, individual transcript sequences of the same gene can differ through naturally occurring variations (e.g. polymorphisms), each with its own valid existence. This clone is substantially in agreement with the reference, but a complete review of all prevailing variants is recommended prior to use. [More info](#)

OTI Annotation: This clone was engineered to express the complete ORF with an expression tag. Expression varies depending on the nature of the gene.

Components: The ORF clone is ion-exchange column purified and shipped in a 2D barcoded Matrix tube containing 10ug of transfection-ready, dried plasmid DNA (reconstitute with 100 ul of water).

Reconstitution Method:

1. Centrifuge at 5,000xg for 5min.
2. Carefully open the tube and add 100ul of sterile water to dissolve the DNA.
3. Close the tube and incubate for 10 minutes at room temperature.
4. Briefly vortex the tube and then do a quick spin (less than 5000xg) to concentrate the liquid at the bottom.
5. Store the suspended plasmid at -20°C. The DNA is stable for at least one year from date of shipping when stored at -20°C.

Note: Plasmids are not sterile. For experiments where strict sterility is required, filtration with 0.22um filter is required.

RefSeq: [NM\\_199286.4](#)

RefSeq Size: 1040 bp

RefSeq ORF: 480 bp

Locus ID: 359787

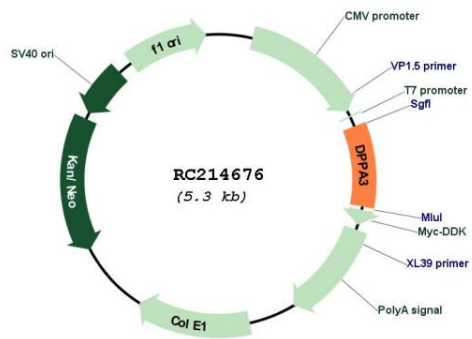
UniProt ID: [Q6W0C5](#)

Cytogenetics: 12p13.31

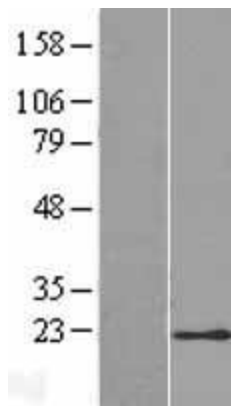
MW: 17.9 kDa

**Gene Summary:** This gene encodes a protein that in mice may function as a maternal factor during the preimplantation stage of development. In mice, this gene may play a role in transcriptional repression, cell division, and maintenance of cell pluripotentiality. In humans, related intronless loci are located on chromosomes 14 and X. [provided by RefSeq, Jul 2008]

## Product images:



Circular map for RC214676



Western blot validation of overexpression lysate (Cat# [LY404607]) using anti-DDK antibody (Cat# [TA50011-100]). Left: Cell lysates from untransfected HEK293T cells; Right: Cell lysates from HEK293T cells transfected with RC214676 using transfection reagent MegaTran 2.0 (Cat# [TT210002]).