

## Product datasheet for **RC214664**

### **DAB1 (NM\_021080) Human Tagged ORF Clone**

#### **Product data:**

Product Type:	Expression Plasmids
Product Name:	DAB1 (NM_021080) Human Tagged ORF Clone
Tag:	Myc-DDK
Symbol:	DAB1
Synonyms:	SCA37
Mammalian Cell Selection:	Neomycin
Vector:	pCMV6-Entry (PS100001)
E. coli Selection:	Kanamycin (25 ug/mL)



[View online »](#)

**ORF Nucleotide Sequence:**

>RC214664 representing NM\_021080  
 Red=Cloning site Blue=ORF Green=Tags(s)

TTTTGTAATACGACTCACTATAGGGCGGCCGGAATTCGTCGACTGGATCCGGTACCGAGGAGATCTGCC  
 GCC**CGGATCGCC**

ATGTCAACTGAGACAGAAGTCAAGTAGCTGTGAAAACAGCGCCAAGAAAGACTCCAGAAAGAAAGGTC  
 AGGATCGCAGTGAAGCCACTTTGATAAAGAGGTTAAAGGTGAAGGGTCCGGTACAAAGCCAAATTGAT  
 CGGGATTGATGAAGTTCCGCAGCTCGGGGAGACAAGTTATGTCAAGATCCATGATGAAACTCAAGGGC  
 GTTGTGCTGGCGCTCGTTCAAAGGAGAACACAAACAGAAAATCTTTTTAACCATCTCCTTTGGAGGAA  
 TCAAAATCTTTGATGAGAAGACAGGGGCCCTTCAGCATCATGCTGTTGATGAAATATCTACATTGC  
 AAAGGACATTACAGATCACCGGGCTTTGGATATGTTTGTGGGAAGGAAGGAATCACAGATTTGTGGCC  
 AAAAAACAGCCAGCGGCTGAACTGTTATTCTGGACTTGAGAGATCTTTCAACTCATTTATGAAT  
 TGAAGCAAAGAGAAGAATTAGAAAAAAGGCACAAAAGGATAAGCAGTGTGAACAAGCTGTGTACCAGAC  
 AATATTGGAAGAGGATGTTGAAGATCCTGTGTACCAGTACATTGTGTTTGGAGCTGGACACGAGCCAATC  
 CGTGATCCGAAACGGAAGAAAACATTTATCAGGTTCCACCAGCCAAAAGAAAGGAGGTTTATGATG  
 TGCCAAAAGTCAACCTGTAAGTGTGTGACCCAAATAGAACTTTTTGGGGACATGTCCACACCCCTGA  
 TATAACCTCTCCCCCACTCCTGCAACTCCAGGTGATGCCTTTATCCCATCTTCACTCAGACCCCTCCA  
 GCGAGTGCAGATGTGTTAGTTCTGTACCTTCGGCACTGCTGCTGTACCTCAGGTTACGTTGCAATGG  
 GCGCTGTCTCCCGTCTTCTGGGGTCAAGCCCTCGTCCACAGCAGATGGTATGGGTGCCAGCC  
 ACCAGTCGCTCAGGTGATGCCGGGGCTCAGCCATCGCATGGGGCCAGCCGGTCTCTTCTGCCACT  
 CAGCAGCCCTGGCAACTGTGGCCGGCAGTTTCCGCCAGCCGCTTATGCCACACAAACTGTTATGC  
 CTTTGCCAGCTGCCATGTTCCAAGTCCCCTCACCCCTTCCACCGTCCAGGCACGAGTGTGATCCAC  
 CAGGTCAAGTCCACAGACCGACAAGCCAGGCAGAAAATGGGCAAGAAACGTTTAAAGATTTCCAGATG  
 GCCCAGCTCCGCCGTCCTCCCGCAAACCCAGCCCTCCCTCACCTGTACCTCAGAGCCCTTCT  
 CCAGTTACTTCAACAAAGTGGGGTGGCACAGGATACAGACGACTGTGATGACTTTGACATCTCCAGTT  
 GAATTTGACCCCTGTGACTTCTACCACACCATCGACCAACTCACCTCCAACCCAGCCCTAGACAGAGC  
 TCTCCATCCAATCATCTGCATCCCATGCCAGTATCCTACCACAGATGACATCTTTGAAGAGGGCTTTG  
 AAAGTCCAGCAAAGCGAAGAGCAAGAAGCTCCTGATGGATCACAGGCCTATCCAACAGTGTCCATT  
 TGGTGAGCCAGTGGGGAGCCAGTGGTATAATAAGTCCACAGCCGGTAGC

**ACGCGT**ACGCGGCCGCTCGAGCAGAAACTCATCTCAGAAGAGGATCTGGCAGCAAATGATATCCTGGATT  
 ACAAGGATGACGACGATAAGGTTTAA

**Protein Sequence:**

>RC214664 representing NM\_021080  
 Red=Cloning site Green=Tags(s)

MSTETELQVAVKTSAKKDSRKKQDRSEATLIKRFKGEVRYKAKLIGIDEVSAARGDKLCQDSMMKLG  
 VVAGARSKGEHKQKIFLTI SFGGIKIFDEKTGALQHHHAVHEISYIAKDITDHRAFGYVCGKEGNHRFVA  
 IKTAQAAEPVILDLRDLFQLIYELKQREELEKKAQKDKQCEQAVYQTIILEEDVEDPVYQYIVFEAGHEPI  
 RDPETEENIYQVPTSQKKEGVYDVPKSPVSAVTQLELFGDMSTPPDITSPPTPATPGDAFIPSSSQTLP  
 ASADVFSVPFGTAAVPSGVYVAMGAVLPSFWGQPLVQQQMMGAQPPVAQVMPGAQPIAWGQPLFPAT  
 QQPWPTVAGQFPFAAFMPTQTMPLPAAMFQGPLTPLATVPGTSDSTRSSPQTDKPRQKMGKETFKDFQM  
 AQPPPVPSPKPDQPSLTCTSEAFSSYFNKVGVAQD DDCDDFDISQLNLTPVTSTPSTNSPPTPAPRQS  
 SPSKSSASHADPTTDDIFEFGFESPSKSEEQEAPDGSQASSNSDPFGEPSPGEPDNI SPQAGS

**TR**TRPLEQKLISEEDLAANDILDYKDDDDKV

**Chromatograms:**

[https://cdn.origene.com/chromatograms/mk6159\\_h06.zip](https://cdn.origene.com/chromatograms/mk6159_h06.zip)

**Restriction Sites:**

Sgfl-Mlul

**Cloning Scheme:**


**ACCN:** NM\_021080

**ORF Size:** 1665 bp

**OTI Disclaimer:** The molecular sequence of this clone aligns with the gene accession number as a point of reference only. However, individual transcript sequences of the same gene can differ through naturally occurring variations (e.g. polymorphisms), each with its own valid existence. This clone is substantially in agreement with the reference, but a complete review of all prevailing variants is recommended prior to use. [More info](#)

**OTI Annotation:** This clone was engineered to express the complete ORF with an expression tag. Expression varies depending on the nature of the gene.

**Components:** The ORF clone is ion-exchange column purified and shipped in a 2D barcoded Matrix tube containing 10ug of transfection-ready, dried plasmid DNA (reconstitute with 100 ul of water).

- Reconstitution Method:**
1. Centrifuge at 5,000xg for 5min.
  2. Carefully open the tube and add 100ul of sterile water to dissolve the DNA.
  3. Close the tube and incubate for 10 minutes at room temperature.
  4. Briefly vortex the tube and then do a quick spin (less than 5000xg) to concentrate the liquid at the bottom.
  5. Store the suspended plasmid at -20°C. The DNA is stable for at least one year from date of shipping when stored at -20°C.

**Note:** Plasmids are not sterile. For experiments where strict sterility is required, filtration with 0.22um filter is required.

**RefSeq:** [NM\\_021080.5](#)

**RefSeq Size:** 2580 bp

**RefSeq ORF:** 1668 bp

**Locus ID:** 1600

UniProt ID: [O75553](#)

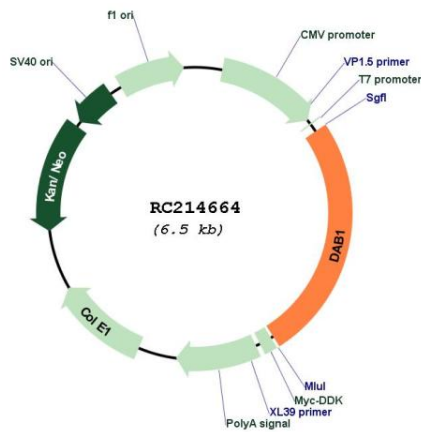
Cytogenetics: 1p32.2

Domains: PID

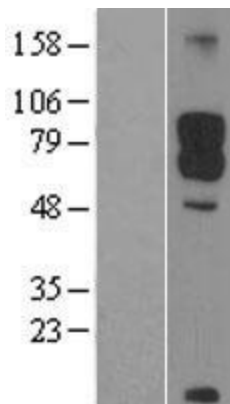
MW: 59.8 kDa

**Gene Summary:** The laminar organization of multiple neuronal types in the cerebral cortex is required for normal cognitive function. In mice, the disabled-1 gene plays a central role in brain development, directing the migration of cortical neurons past previously formed neurons to reach their proper layer. This gene is similar to disabled-1, and the protein encoded by this gene is thought to be a signal transducer that interacts with protein kinase pathways to regulate neuronal positioning in the developing brain. [provided by RefSeq, Jan 2017]

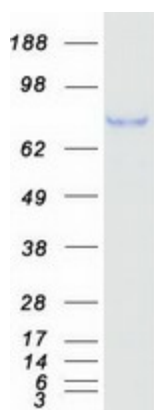
**Product images:**



Circular map for RC214664



Western blot validation of overexpression lysate (Cat# [LY402829]) using anti-DDK antibody (Cat# [TA50011-100]). Left: Cell lysates from untransfected HEK293T cells; Right: Cell lysates from HEK293T cells transfected with RC214664 using transfection reagent MegaTran 2.0 (Cat# [TT210002]).



Coomassie blue staining of purified DAB1 protein (Cat# [TP314664]). The protein was produced from HEK293T cells transfected with DAB1 cDNA clone (Cat# RC214664) using MegaTran 2.0 (Cat# [TT210002]).