

## Product datasheet for RC214662L1

### Ornithine Carbamoyltransferase (OTC) (NM\_000531) Human Tagged Lenti ORF Clone

#### Product data:

Product Type:	Expression Plasmids
Product Name:	Ornithine Carbamoyltransferase (OTC) (NM_000531) Human Tagged Lenti ORF Clone
Tag:	Myc-DDK
Symbol:	Ornithine Carbamoyltransferase
Synonyms:	OCTD; OTCD
Mammalian Cell Selection:	None
Vector:	pLenti-C-Myc-DDK (PS100064)
E. coli Selection:	Chloramphenicol (34 ug/mL)
ORF Nucleotide Sequence:	The ORF insert of this clone is exactly the same as(RC214662).
Restriction Sites:	SgfI-MluI
Cloning Scheme:	

Cloning sites used for ORF Shuttling:



\* The last codon before the Stop codon of the ORF.

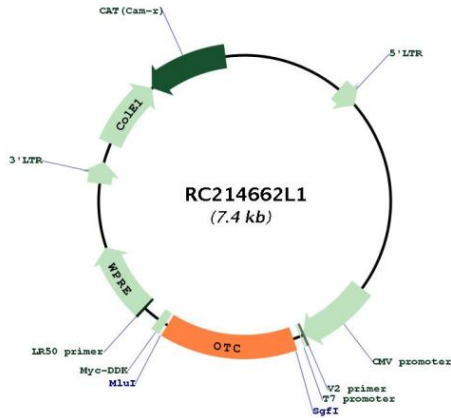
ACCN:	NM_000531
ORF Size:	1062 bp



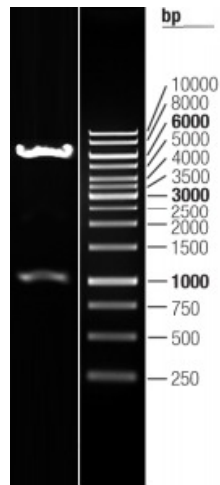
[View online »](#)

<b>OTI Disclaimer:</b>	The molecular sequence of this clone aligns with the gene accession number as a point of reference only. However, individual transcript sequences of the same gene can differ through naturally occurring variations (e.g. polymorphisms), each with its own valid existence. This clone is substantially in agreement with the reference, but a complete review of all prevailing variants is recommended prior to use. <a href="#">More info</a>
<b>OTI Annotation:</b>	This clone was engineered to express the complete ORF with an expression tag. Expression varies depending on the nature of the gene.
<b>Components:</b>	The ORF clone is ion-exchange column purified and shipped in a 2D barcoded Matrix tube containing 10ug of transfection-ready, dried plasmid DNA (reconstitute with 100 ul of water).
<b>Reconstitution Method:</b>	<ol style="list-style-type: none"><li>1. Centrifuge at 5,000xg for 5min.</li><li>2. Carefully open the tube and add 100ul of sterile water to dissolve the DNA.</li><li>3. Close the tube and incubate for 10 minutes at room temperature.</li><li>4. Briefly vortex the tube and then do a quick spin (less than 5000xg) to concentrate the liquid at the bottom.</li><li>5. Store the suspended plasmid at -20°C. The DNA is stable for at least one year from date of shipping when stored at -20°C.</li></ol>
<b>RefSeq:</b>	<a href="#">NM_000531.3</a>
<b>RefSeq Size:</b>	1927 bp
<b>RefSeq ORF:</b>	1065 bp
<b>Locus ID:</b>	5009
<b>UniProt ID:</b>	<a href="#">P00480</a>
<b>Cytogenetics:</b>	Xp11.4
<b>Domains:</b>	OTCace, OTCace_N
<b>Protein Families:</b>	Druggable Genome
<b>Protein Pathways:</b>	Arginine and proline metabolism, Metabolic pathways
<b>MW:</b>	39.94 kDa
<b>Gene Summary:</b>	This nuclear gene encodes a mitochondrial matrix enzyme. Missense, nonsense, and frameshift mutations in this enzyme lead to ornithine transcarbamylase deficiency, which causes hyperammonemia. Since the gene for this enzyme maps close to that for Duchenne muscular dystrophy, it may play a role in that disease also. [provided by RefSeq, Jul 2008]

Product images:



Circular map for RC214662L1



Double digestion of RC214662L1 using SgfI and MluI