

Product datasheet for **RC214649**

CCDC85A (NM_001080433) Human Tagged ORF Clone

Product data:

Product Type:	Expression Plasmids
Product Name:	CCDC85A (NM_001080433) Human Tagged ORF Clone
Tag:	Myc-DDK
Symbol:	CCDC85A
Mammalian Cell Selection:	Neomycin
Vector:	pCMV6-Entry (PS100001)
E. coli Selection:	Kanamycin (25 ug/mL)



[View online »](#)

ORF Nucleotide Sequence:

>RC214649 representing NM_001080433
 Red=Cloning site Blue=ORF Green=Tags(s)

TTTTGTAATACGACTCACTATAGGGCGGCCGGGAATTCGTCGACTGGATCCGGTACCGAGGAGATCTGCC
 GCC**CGGATCGCC**

ATGTCGAAGGCGGCCGGAGGCGCGCGCGGCTGCGGCGCGCGGAAAGTTGTTCCCCAGCCCCGGCCG
 GCTCGTCCGCGGCCCGCCCGCGCGGTTGGAGGACCTGTCCAAAGTGTCCGACGAGGAGCTGCTGCAGTG
 GAGCAAGGAGGAGCTGATCCGCAGCCTGCGGCGCGCCGAGGCGGAGAAGGTGAGCGCGATGCTGGACCAC
 AGCAACCTCATCCGCGAGGTGAACCGCCGCTGCAGCTGCACCTCGGCGAGATCCGCGGCCTCAAGGATA
 TCAACCAGAACTCCAGGAAGACAACCAGGAAGTGAAGGACCTCTGCTGTTTCTGGATGATGACCGGCA
 GAAAGGCAAGAGGGTGTCTCGGGAGTGGCAGAGACTGGTTCGCTACACTGCCGGGTGATGCACAAGGAA
 GTGGCCTTATACCTGCAGAAGCTGAAAGACCTGGAGGTGAAGCAGGAGGAAGTGGTAAGGAGAATCGG
 AGCTCAAGGAGCTCTGTGTCTACTAGATGAGGAGAAGGGTGCAGGCTGCGCAGGACGCCGCTGCTCCAT
 CGACAGCCAGGCCAGCCTGTGCCAACTCACAGCCTCCACCGCACCTACGTGCGGGATGTGGGTGACGGC
 AGCAGCACCTCCAGCACTGGCAGCACTGACAGCCCGGACCACCACAAGCACCCAGCGAGCAGTGGCAGCC
 CGGAGCACCTGCAGAAGCCCCGGAGCGAGGGCAGCCCGGAGCACTCCAAGCACAGGAGCGCCAGCCCCGA
 GCATCCACAGAAACCCAGAGCCTGTGGAACCCAGATCGCCCCAAAGCACTCAAAGGACCTAGCCCCGGAG
 CACCACAAACCTTGTGCAAGGGCAGCCCCGAACAGCAAGGCACCCGCATCCAGGGAGCAGCCCCGAAA
 CGCTGCCAAGCACGTGCTGAGTGGGAGCCCGGAACACTTCCAGAAGCACCGGTGAGGGAGCAGCCCTGA
 ACACGCCAGGCACAGTGGAGGGAGCCCGGAGCATCTTCAGAAACACGCTCTTGGGGGAGCCTAGAGCAT
 CTCCCCAGAGCCAGGGGCACCAGCCCGGAGCACCTCAAACAACATTATGGAGGGAGCCCTGATCACAAAC
 ACGGAGGAGGCAGTGGAGGAAGTGGAGGCAGCGCGGAGGCAGCAGGGAGGGCACCTCAGACGGCAGGC
 ACAGGAGGACGGGTACCCCATACCCGAATGTCTACAGTGGCATGAACGAATCAACCTTGTCTATGTT
 AGGCAGCTGGAGGCAAGAGTAAGACAGCTGGAGGAAGAAAATCGCATGCTGCCCCAGGCCAGCCAGAATA
 GAAGGCAACCTCCAAGTAAAGACAGCTCAAATATGGAGAAAGGCTGGGGTCCAGAGCCCGCGGGTCTT
 GCAGTGGTGGCAAGGGTCCGAGGAATAGGACGATGCCTGCCTACTCTCCCGGTTCTTTTAGGTTGTCA
 TCAGGGGCTGATGGGAGTAACAGTTCACCCAACCTGCAGCTAGCTTCAGTGGACATGCCACACCTTCCC
 AGCAGCCTGAACCTGTGGTACATTCTCTTAAGGTTGTGTGGAGGAACTTGGAGATGCTGCAGGTTCTGT
 TCCTGGAATTAGCAACATTTGTCAGGAAACAGTACAAAGGACCAATG

ACGCGTACGCGGCCGCTCGAGCAGAAACTCATCTCAGAAGAGGATCTGGCAGCAAATGATATCCTGGATT
 ACAAGGATGACGACGATAAGGTTTAA

Protein Sequence:

>RC214649 representing NM_001080433
 Red=Cloning site Green=Tags(s)

MSKAAGGAAAAAAEESCSPAPAGSSAAPPAPVEDLSKVSDEELLQWSKEELIRSLRRAEAEKVSAMLDH
 SNLIREVNRRLQLHLGEIRGLKIDINQKLQEDNQELRDLCCFLDDDRQKGRVRSREWQRLGRYTAGVMHKE
 VALYLQKLDLEVKQEEVVKENMELKELCVLLDEEKGAGCAGSRCSIDSQASLCQLTASTAPYVRDVGDG
 SSTSTGSTDSPDHKHHASSGSPHLQKPRSEGSPEHSKHSASPEHPQKPRACGTPDRPKALKGSPSE
 HHKPLCKGSPEQQRHPHPGSSPETLPKHVLSGSPEHFQKHSRSGSPEHARHSGGSPHLQKHALGGSLEH
 LPRARGTSPEHLKQHYGGSPDHKHGGGSGGSGGSGGREGTLRRQAQEDGSPHHRNVYSGMNESTLSYV
 RQLEARVRQLEENRMLPQASQNRQPPTRNSSNMEKGWGSRARRVLQWWQGCGRIGRCLPTLPGSFRLS
 SGADGNSNSPNSAASFSGHATPSQPEPVVHSLKVVWRKLGDAAGSCPGIRQHLSGNQYKGP

TRTRPLEQKLISEEDLAANDILDYKDDDDKV

Chromatograms:

https://cdn.origene.com/chromatograms/mk8030_b05.zip

Restriction Sites:

SgfI-MluI

Cloning Scheme:


ACCN: NM_001080433

ORF Size: 1659 bp

OTI Disclaimer: The molecular sequence of this clone aligns with the gene accession number as a point of reference only. However, individual transcript sequences of the same gene can differ through naturally occurring variations (e.g. polymorphisms), each with its own valid existence. This clone is substantially in agreement with the reference, but a complete review of all prevailing variants is recommended prior to use. [More info](#)

OTI Annotation: This clone was engineered to express the complete ORF with an expression tag. Expression varies depending on the nature of the gene.

Components: The ORF clone is ion-exchange column purified and shipped in a 2D barcoded Matrix tube containing 10ug of transfection-ready, dried plasmid DNA (reconstitute with 100 ul of water).

Reconstitution Method:

1. Centrifuge at 5,000xg for 5min.
2. Carefully open the tube and add 100ul of sterile water to dissolve the DNA.
3. Close the tube and incubate for 10 minutes at room temperature.
4. Briefly vortex the tube and then do a quick spin (less than 5000xg) to concentrate the liquid at the bottom.
5. Store the suspended plasmid at -20°C. The DNA is stable for at least one year from date of shipping when stored at -20°C.

RefSeq: [NM_001080433.2](#)

RefSeq Size: 3983 bp

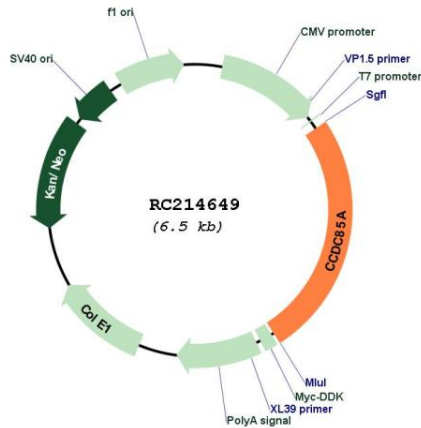
RefSeq ORF: 1662 bp

Locus ID: 114800

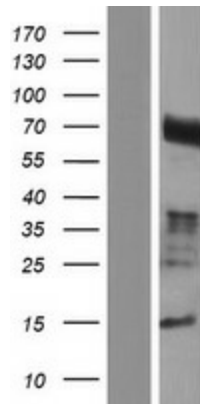
UniProt ID: [Q96PX6](#)

Cytogenetics: 2p16.1
MW: 59.8 kDa
Gene Summary: May play a role in cell-cell adhesion and epithelium development through its interaction with proteins of the beta-catenin family.[UniProtKB/Swiss-Prot Function]

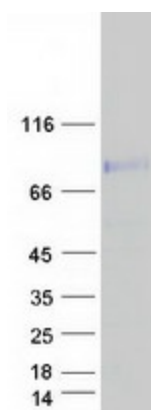
Product images:



Circular map for RC214649



Western blot validation of overexpression lysate (Cat# [LY421650]) using anti-DDK antibody (Cat# [TA50011-100]). Left: Cell lysates from untransfected HEK293T cells; Right: Cell lysates from HEK293T cells transfected with RC214649 using transfection reagent MegaTran 2.0 (Cat# [TT210002]).



Coomassie blue staining of purified CCDC85A protein (Cat# [TP314649]). The protein was produced from HEK293T cells transfected with CCDC85A cDNA clone (Cat# RC214649) using MegaTran 2.0 (Cat# [TT210002]).