

Product datasheet for **RC214643**

ANKLE1 (NM_152363) Human Tagged ORF Clone

Product data:

Product Type:	Expression Plasmids
Product Name:	ANKLE1 (NM_152363) Human Tagged ORF Clone
Tag:	Myc-DDK
Symbol:	ANKLE1
Synonyms:	ANKRD41; LEM3; LEMD6
Mammalian Cell Selection:	Neomycin
Vector:	pCMV6-Entry (PS100001)
E. coli Selection:	Kanamycin (25 ug/mL)



[View online »](#)

ORF Nucleotide Sequence:

>RC214643 representing NM_152363
 Red=Cloning site Blue=ORF Green=Tags(s)

TTTTGTAATACGACTCACTATAGGGCGGCCGGAATTCGTCGACTGGATCCGGTACCGAGGAGATCTGCC
 GCC**CGGATCGCC**

ATGTGCTCGGAGGCCCGCTGGCTCGCAGTTGCGGGATGCGCTGCGGGAGGAGGCCGTGGGCAGTAG
 AGGAGCTGCTGCGCTGCGGCGCGGACCCTAATTTGGTGTAGAGGACGGCGCAGCGGCTGTGCACCTGGC
 GGCCGGAGCCCGCACCCGCGCGGCTGCGTTGCTCGGGGCCCTACTGCGCAAGGCGGGGACCCCAAC
 GCTCGACTGTGAGGCACTGACGCCGCTGCATGTGGCCGCCGCTGGGCTGCCGCCGCGGCTGGAGC
 TGCTGCTGAGCCAAGGAGCGGACCCGGCGCTGCGCGACCAGGACGGACTCCGGCCGCTGGACCTGGCCCT
 GCAGCAGGACACCTGGAGTGCAGCGGAGTCTGCAGGATCTCGACACCGGACCAGGACCCGGACCCGG
 ATCGGGGACAGACTCAGGAGCCCGAGCCTGCACCTGGCACCCAGGCCTCTCTGGACCTACCGATGAGA
 CGCTGGACTCCATAGCACTCCAAAAGCAGCCATGCAGAGGTGACAACAGGGACATTGGCTTGGAGGCTGA
 CCCAGGACCCCGAGCCTCCCTGTTCCCTTGAAGTGTGGACAACATGGGAGCTCGGCGTCCCCTCCA
 GGGCACTGGGATTACAGCTCAGACGCCTTTTCGTACAGCGGTTGAGGTCTCTGGAGCTGAGGACCCAG
 CCTCGGACACTCCCCCTGGGCTGGGTCATTGCCACCGACCAGGACGGGACTTCTGCATGTTGCCATGC
 CAACCAGAGGGTACCTAGGTCTCAGGGCACGGAGGAGAACTGAATGCCCGTCTGCAGGCCCTGACTCTG
 ACCCCACCAAAATGCTGCTGGCTTCCAGTCTCCCTTCTCCATGCCTCTCTGGACAGGAGTCCAGCTC
 ATAGCCCCCACGGACACCAACCCTGGAGCTTCTGACTGCCACTGCCTGTGGGAGCACCAGACATCCAT
 TGATAGTGACATGGCCACGCTCTGGCTGACAGAGGATGAGGCAAGCTCTACAGGTGGCAGGAACTGTC
 GGCCCTTGCCGGCACCTGCCAGTCTCCACTGTGTCTGACTTGGAGTTGCTGAAGGGACTCCGAGCATTG
 GTGAGAATCCTCACCCATCACACCTTACCAGGCAGTTGTACCACAGCAGCTGGAAGAAGCCAGAT
 TGCTCCTGGCCAGAGTTTTAGGGCACAGCCTAGAAGTGGCTGCAGCCCTGCGGACGGGCTGTATTCCA
 GATGTCCAGGCAGATGAAGACGCGCTGGCCAGCAGTTTGTGAGCAGCCAGATCCTGCCAGGAGGTGGCGGG
 AGGGGGTCTGAAGTCTAGCTTACCTATCTGCTGCTGGACCCAGGAGACTCAGGACCTGCCAGCCCG
 AGCCTTCTCACTGACCCAGCTGAGCGCTTCACTTTCATCCGTGCCATCTTCTACGTGGGCAAGGG
 ACGAGGGCCCGGCATATGTCCACCTCTGGGAGGCCCTTGGTACCATGGGCGGTCAAGAAAACAGCCCC
 ACCAGGCTGCCCAAGGTGCGTCAGATCTGGACATCTGGCCAGTGGTTCGGTGTGTGTCCCTACA
 TTGCTTCCAGCACGTGGTCTGTGGAGGCTTATACACGGGAGGCGTGTATTGTGAAGCCCTAGGGATC
 CAGACGCTACCAACCAGAAGCAAGGGCACTGCTATGGAGTGGTGGCAGGCTGGCCACCTGCTCGTCCG
 GCGCTTGGGGTGCACCTGCTGCACCGTCCCTCCTTGTCTTCTGGCTGAAGGCGAGCGACAGCTTCA
 TCCCAGGACATCCAGGCCCGGGC

ACGCGTACGCGGCCGCTCGAGCAGAACTCATCTCAGAAGAGGATCTGGCAGCAATGATATCCTGGATT
 ACAAGGATGACGACGATAAGGTTAA

Protein Sequence:

>RC214643 representing NM_152363
 Red=Cloning site Green=Tags(s)

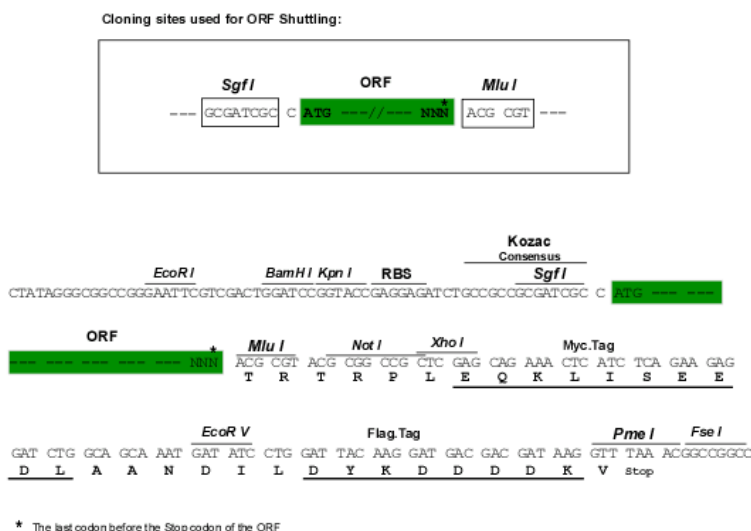
MCSEARLARLRDALREEEPWAVEELLRCGADPNLVLEDGAAAVHLAAGARHPRGLRCLGALLRQGGDPN
 ARSVEALTPLHVAWGCRRGLELLL SQGADPALRDQDGLRPLDLALQQGHLECARVLQDLDRTRTRTR
 IGAETQEPEPAPGTPGLSGPTDETLDSIALQKQPCRGDNRDIGLEADPGPPSLVPLETVDKHGSSASPP
 GHWDYSSDASFVTAVEVSGAEDPASDTPPWAGSLPPTRQGLLHVHVNQRVPRSQTAEALNARLQALTL
 TPPNAAGFQSSPSSMPLLDSPAHSPPTPTPGASDCHLWEHQTSIDSDMATLWLTEDEASSTGGREPV
 GPCRHLVPSTVSDLELLKGLRALGENPHPIPTFTRQLYHQLEEAQIAPGPEFSGHSLELAAALRTGCIP
 DVQADEDALAQFEQPDPAARRWREGVVKSSFTYLLDPRETQDLPARAFSLTPAERLQTFIRAIFYVKGK
 TRARPYVHLWEALGHHGRSRKQPHQACPKVRQILDIIWASGCGVSLHCFQHVVAVEAYTRECIVEALGI
 QLTLNQKQGHYGVVAGWPPARRRRRLGVHLLHRALLVFLAEGERQLHPQDIQARG

TRTRPLEQKLISEEDLAANDILDYKDDDDKV

Chromatograms: https://cdn.origene.com/chromatograms/mk8030_a06.zip

Restriction Sites: SgfI-MluI

Cloning Scheme:



ACCN: NM_152363

ORF Size: 1845 bp

OTI Disclaimer: Due to the inherent nature of this plasmid, standard methods to replicate additional amounts of DNA in E. coli are highly likely to result in mutations and/or rearrangements. Therefore, OriGene does not guarantee the capability to replicate this plasmid DNA. Additional amounts of DNA can be purchased from OriGene with batch-specific, full-sequence verification at a reduced cost. Please contact our customer care team at custsupport@origene.com or by calling 301.340.3188 option 3 for pricing and delivery.

The molecular sequence of this clone aligns with the gene accession number as a point of reference only. However, individual transcript sequences of the same gene can differ through naturally occurring variations (e.g. polymorphisms), each with its own valid existence. This clone is substantially in agreement with the reference, but a complete review of all prevailing variants is recommended prior to use. [More info](#)

OTI Annotation: This clone was engineered to express the complete ORF with an expression tag. Expression varies depending on the nature of the gene.

Components: The ORF clone is ion-exchange column purified and shipped in a 2D barcoded Matrix tube containing 10ug of transfection-ready, dried plasmid DNA (reconstitute with 100 ul of water).

Reconstitution Method:

1. Centrifuge at 5,000xg for 5min.
2. Carefully open the tube and add 100ul of sterile water to dissolve the DNA.
3. Close the tube and incubate for 10 minutes at room temperature.
4. Briefly vortex the tube and then do a quick spin (less than 5000xg) to concentrate the liquid at the bottom.
5. Store the suspended plasmid at -20°C. The DNA is stable for at least one year from date of shipping when stored at -20°C.

RefSeq: [NM_152363.6](#)

RefSeq Size: 3217 bp

RefSeq ORF: 1848 bp

Locus ID: 126549

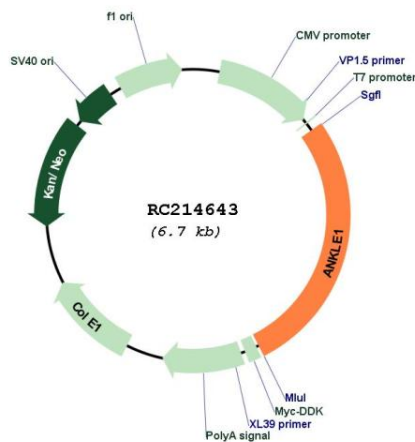
UniProt ID: [Q8NAG6](#)

Cytogenetics: 19p13.11

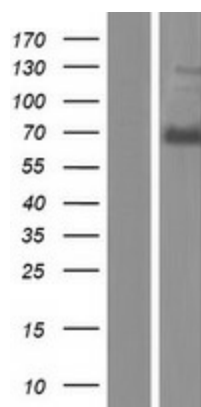
MW: 66.7 kDa

Gene Summary: Endonuclease that probably plays a role in the DNA damage response and DNA repair. [UniProtKB/Swiss-Prot Function]

Product images:



Circular map for RC214643



Western blot validation of overexpression lysate (Cat# [LY407613]) using anti-DDK antibody (Cat# [TA50011-100]). Left: Cell lysates from untransfected HEK293T cells; Right: Cell lysates from HEK293T cells transfected with RC214643 using transfection reagent MegaTran 2.0 (Cat# [TT210002]).