

Product datasheet for RC214638

ASRGL1 (NM_001083926) Human Tagged ORF Clone

Product data:

Product Type:	Expression Plasmids
Product Name:	ASRGL1 (NM_001083926) Human Tagged ORF Clone
Tag:	Myc-DDK
Symbol:	ASRGL1
Synonyms:	ALP; ALP1; CRASH
Mammalian Cell Selection:	Neomycin
Vector:	pCMV6-Entry (PS100001)
E. coli Selection:	Kanamycin (25 ug/mL)
ORF Nucleotide Sequence:	>RC214638 representing NM_001083926 Red=Cloning site Blue=ORF Green=Tags(s)

TTTTGTAATACGACTCACTATAGGGCGGCCGGAATTCGTCGACTGGATCCGGTACCGAGGAGATCTGCC
GCC**CGATCGCC**

ATGAATCCCATCGTAGTGGTCCACGGCGGGAGCCGGTCCCATCTCCAAGGATCGGAAGGAGCGAGTGC
ACCAGGGCATGGTCAGAGCCGCCACCGTGGGCTACGGCATCTCCGGGAGGGCGGGAGCGCCGTGGATGC
CGTAGAGGGAGCTGTCGTCGCCCTGGAAGACGATCCCAGTTCAACGCAGGTTGTGGTCTGTCTTGAAC
ACAAATGGTGAGGTTGAAATGGATGCTAGTATCATGGATGGAAAAGACCTGTCTGCAGGAGCAGTGTCCG
CAGTCCAGTGTATAGCAAATCCATTAACTTGTCTCGGCTTGTCATGGAAAAGACACCTCATTGCTTTCT
GACTGACCAAGGCGCAGCGCAGTTTGCAGCAGCTATGGGGTTCCAGAGATTCTGGAGAAAACTGGTG
ACAGAGAGAAAACAAAAGCGCCTGGAAAAGAGAAGCATGAAAAGGTGCTCAGAAAACAGATTGTCAAA
AAAATTTGGGAACCGTGGGTGCTGTTGCCTTGGACTGCAAAGGAATGTAGCCTACGCAACCTCCACAGG
CGGTATCGTTAATAAAATGGTCGGCCGCTTGGGGACTCACCGTGTCTAGGAGCTGGAGGTTATGCCGAC
AATGACATCGGAGCCGTCTCAACCACAGGGCATGGGAAAAGCATCCTGAAGGTGAACCTGGCTAGACTCA
CCCTGTTCCACATAGAACAAGGAAAGACGGTAGAAGAGGCTGCGGACCTATCGTTGGGTTATATGAAGTC
AAGGTTAAAGGTTTAGGTGGCCTCATCGTGGTTAGCAAAACAGGAGACTGGGTGGCAAAGTGGACCTCC
ACCTCCATGCCCTGGGCAGCCGCAAGGACGGCAAGCTGCACTTCGGAATTGATCCTGACGATACTACTA
TCACCGACCTTCCC

ACGCGTACGCGGCCGCTCGAGCAGAAACTCATCTCAGAAGAGGATCTGGCAGCAAATGATATCCTGGATT
ACAAGGATGACGACGATAAGGTTTAA



[View online »](#)

Protein Sequence: >RC214638 representing NM_001083926
 Red=Cloning site Green=Tags(s)

MNPIVVVHGGGAGPISKDRKERVHQGMVRAATVGYGILREGGSAVDAVEGAVVALEDDPEFNAGCGSVLN
 TNGEVEMDASIMDGKDL SAGAVSAVQCIANPIKLARLVMEKTPHCFLTDQGAAQFAAAMGVPEIPGEKLV
 TERNKKRLEKEKHEKGAQKTDCCQKNLGTGVAVALDCKGNVAYATSTGGIVNKMVGRVGDSPCLGAGGYAD
 NDIGAVSTTGHGESILKVNLRARLTLFHIEQKTVEEAADLSLGYMKSRVKLGGGLIVVSKTGDWVAKWTS
 TSMPWAAAADGKLFHGIDPDDTTITDLP

TRTRPLEQKLISEEDLAANDILDYKDDDDKV

Chromatograms: https://cdn.origene.com/chromatograms/mg3516_a07.zip

Restriction Sites: SgfI-MluI

Cloning Scheme:



* The last codon before the Stop codon of the ORF

ACCN: NM_001083926

ORF Size: 924 bp

OTI Disclaimer: The molecular sequence of this clone aligns with the gene accession number as a point of reference only. However, individual transcript sequences of the same gene can differ through naturally occurring variations (e.g. polymorphisms), each with its own valid existence. This clone is substantially in agreement with the reference, but a complete review of all prevailing variants is recommended prior to use. [More info](#)

OTI Annotation: This clone was engineered to express the complete ORF with an expression tag. Expression varies depending on the nature of the gene.

Components: The ORF clone is ion-exchange column purified and shipped in a 2D barcoded Matrix tube containing 10ug of transfection-ready, dried plasmid DNA (reconstitute with 100 ul of water).

Reconstitution Method:

1. Centrifuge at 5,000xg for 5min.
2. Carefully open the tube and add 100ul of sterile water to dissolve the DNA.
3. Close the tube and incubate for 10 minutes at room temperature.
4. Briefly vortex the tube and then do a quick spin (less than 5000xg) to concentrate the liquid at the bottom.
5. Store the suspended plasmid at -20°C. The DNA is stable for at least one year from date of shipping when stored at -20°C.

RefSeq: [NM_001083926.2](#)

RefSeq Size: 2424 bp

RefSeq ORF: 927 bp

Locus ID: 80150

UniProt ID: [Q7L266](#)

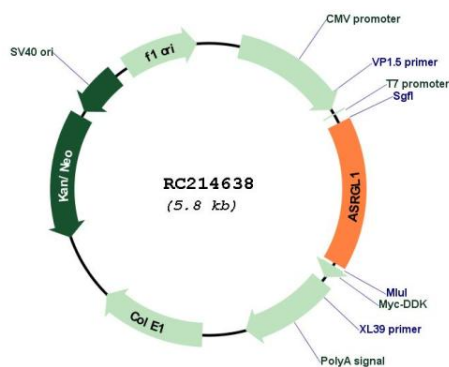
Cytogenetics: 11q12.3

Protein Families: Protease

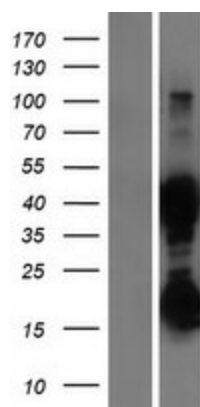
MW: 31.9 kDa

Gene Summary: Has both L-asparaginase and beta-aspartyl peptidase activity. May be involved in the production of L-aspartate, which can act as an excitatory neurotransmitter in some brain regions. Is highly active with L-Asp beta-methyl ester. Besides, has catalytic activity toward beta-aspartyl dipeptides and their methyl esters, including beta-L-Asp-L-Phe, beta-L-Asp-L-Phe methyl ester (aspartame), beta-L-Asp-L-Ala, beta-L-Asp-L-Leu and beta-L-Asp-L-Lys. Does not have aspartylglucosaminidase activity and is inactive toward GlcNAc-L-Asn. Likewise, has no activity toward glutamine.[UniProtKB/Swiss-Prot Function]

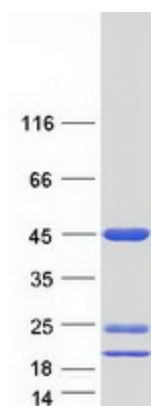
Product images:



Circular map for RC214638



Western blot validation of overexpression lysate (Cat# [LY421255]) using anti-DDK antibody (Cat# [TA50011-100]). Left: Cell lysates from untransfected HEK293T cells; Right: Cell lysates from HEK293T cells transfected with RC214638 using transfection reagent MegaTran 2.0 (Cat# [TT210002]).



Coomassie blue staining of purified ASRGL1 protein (Cat# [TP314638]). The protein was produced from HEK293T cells transfected with ASRGL1 cDNA clone (Cat# RC214638) using MegaTran 2.0 (Cat# [TT210002]).