

## Product datasheet for **RC214634**

### ZNF131 (NM\_003432) Human Tagged ORF Clone

#### Product data:

Product Type:	Expression Plasmids
Product Name:	ZNF131 (NM_003432) Human Tagged ORF Clone
Tag:	Myc-DDK
Symbol:	ZNF131
Synonyms:	pHZ-10; ZBTB35
Mammalian Cell Selection:	Neomycin
Vector:	pCMV6-Entry (PS100001)
E. coli Selection:	Kanamycin (25 ug/mL)



[View online »](#)

**ORF Nucleotide Sequence:**

>RC214634 representing NM\_003432  
 Red=Cloning site Blue=ORF Green=Tags(s)

TTTTGTAATACGACTCACTATAGGGCGGCCGGGAATTCGTCGACTGGATCCGGTACCGAGGAGATCTGCC  
 GCC**CGCATCGCC**

ATGGAGGCTGAAGAGACGATGGAATGCCTTCAGGAGTTCCTGAACATCATAAAAATGATCCTCGACCGAT  
 TGAATGAACAGCGAGAGCAGGACCGTTTACTGACATCACCTAATTGTCGACGGACACCAATTTAAGGC  
 TCACAAGGCTGTTTTGGCTGCTTGTAGTAAAGTTCTTCTACAAATCTTTTCAGGAGTTACCCAAGAACCA  
 TTGGTGGAGATAGAAGGTGTAGTAAAAAGCCTTTCGCCATTTAATTGAGTTCACATATACAGCAAAAAT  
 TAATGATACAAGGAGAAGAAGAAGCCAATGATGTATGAAAGCAGCAGAGTTTCTACAAATGCTAGAAGC  
 TATCAAAGCCCTGAAGTCAGGAACAAAGAAAACCTCAGCTCCCTTAGAGGAAAATACCACAGGAAAAAAT  
 GAGGCCAAAAAAGGAAGATTGCAGAAACTTCAAATGTTATCACTGAGTCATTGCCATCTGCAGAATCAG  
 AACCTGTTGAAATGAGGTAGAGATTGCCGAAGGCACCATTGAAGTGAAGATGAAGGCATCGAAACATT  
 AGAGGAAGTGGCTTCTGCCAAGCAGTCCGTAAGTACATACAGAGCACAGGTTCTCTGATGATTCTGCT  
 CTAGCACTGTTGGCAGATATTACCAGCAAGTACCGTCAAGGTGACAGAAAAGGGCAGATTAAGAAGATG  
 GCTGTCCATCTGACCCCACGAGCAAACAGGAGCACATGAAATCACACTCCACTGAGAGTTTCAAGTGTGA  
 AATATGCAATAAACGATATCTTCGAGAGAGCGCATGGAACAGCACCTAAATTGTTACCACCTTGAAGAA  
 GGTGGAGTCAGTAAGAAGCAAAGAACTGGGAAAAAATTCATGTATGTCAGTACTGTGAGAAACAGTTTG  
 ACCATTTTGGACATTTTAAAGAACATCTTCGAAAAACATACAGGTGAAAAACCTTTTGAATGTCCAAATG  
 TCATGAACGATTTGCTAGAAATAGCACTCTGAAATGTCACCTCACTGCATGCCAACTGGAGTAGGGCA  
 AAAAAAGGAAGGAAGAAGCTCTACGAATGCCAGGTCTGCAACAGTGTGTTAACAGCTGGGACCAATCA  
 AAGTCACTTGGTAATACACACTGGAGATAAACCCAACCACTTGTACTTTATGTGATTTGTGTTTTATGCA  
 AGGAAATGAATTAAGGAGGCATCTCAGTATGCTCACAATATTTTCAGAGCGTCTAGTAACGGGAAGAAGTT  
 CTTTCAGTAGAAACACGTGTGCAAACTGAACCTGTAACATCAATGACTATTATAGAAACAGTTGGGAAGG  
 TGCATGTGCTACCATTGCTTCAGGTTCCAGTGGATTCCAGCACAAGTACTGTGGAACAAGTCCATCCAGA  
 TCTGCTCCAGGACAGCCAGGTGCACGATTCACACATGAGTGAAGTCCAGAGCAGGTCCAAGTGAAGTAT  
 CTAGAAGTGGCCGAATTCAGACTGAAGAAGGTACTGAAGTACATGTAGAGGAGCTGCATGTTGAACGGG  
 TCAATCAAATGCCAGTGGAGTACAACTGAACCTCTAGAAGCAGATTTGGACCAGTGAACCCAGAAAT  
 CATGAACCAAGAGGAGAGAGAGTCTAGCCAAGCAGATGCTGCTGAGGCTGCCAGGAAGATCACGAAGAT  
 GCTGAGGATTTAGAGACCAAGCCAACAGTGGATTCTGAAGCAGAAAAGGCAGAGAATGAGGACAGAACAG  
 CTCTGCCAGTTTTAGAA

**ACGCGT**ACGCGGCCGCTCGAGCAGAACTCATCTCAGAAGAGGATCTGGCAGCAAATGATATCCTGGATT  
 ACAAGGATGACGACGATAAGGTTTAA

**Protein Sequence:**

>RC214634 representing NM\_003432  
 Red=Cloning site Green=Tags(s)

MEAEETMECLQEFPEHHKMILDRLNEQREQDRFTDITLIVDGHFFKAHKAVLAACSKFFYKFFQEFQEP  
 LVEIEGVSKMAFRHLIEFTYTAKLMIQGEEEANDVWKAEEFLQMLEAIKALEVRNKENSAPLEENTTGKN  
 EAKKRKIAETSNVITESLPSAASEPVEIEVEIAEGTIEVEDEGIETLEEVASAKQSVKYIQSTGSSDDSA  
 LALLADITSKYRQDRKGQIKEDGCPDPTSKQEHMKSHSTESFKCEICNKRYLRESAWKQHLNLCYHLEE  
 GGVSKKQRTGKKIHVCQYCEKQFDHFGHFKEHLRKHTGEKPFECPNCHERFARNSTLKCHLTACQTGVGA  
 KKGRKKLYECQVCNSVFNWDQFKDHLVIHTGDKPNHCTLCDLWFMQGNELRRHLSDAHNISERLVTEEV  
 LSVETRVQTEPVTSMITIEQVGKVHVLPLLQVQVDSAQVTVEQVHPDLLQDSQVHDSHMSSELPEQVQVSY  
 LEVGRIQTEEGTEVHVEELHVERVNPMPVEVQTELEADLDHVTPEIMNQEERESSQADAAEAAREDHED  
 AEDLETKPTVDSEAEKAENEDRTALPVLE

**TR**TRPLEQKLISEEDLAANDILDYKDDDDKV

**Chromatograms:**

[https://cdn.origene.com/chromatograms/mk8030\\_a09.zip](https://cdn.origene.com/chromatograms/mk8030_a09.zip)

Restriction Sites: SgfI-MluI

Cloning Scheme:



ACCN: NM\_003432

ORF Size: 1767 bp

OTI Disclaimer: The molecular sequence of this clone aligns with the gene accession number as a point of reference only. However, individual transcript sequences of the same gene can differ through naturally occurring variations (e.g. polymorphisms), each with its own valid existence. This clone is substantially in agreement with the reference, but a complete review of all prevailing variants is recommended prior to use. [More info](#)

OTI Annotation: This clone was engineered to express the complete ORF with an expression tag. Expression varies depending on the nature of the gene.

Components: The ORF clone is ion-exchange column purified and shipped in a 2D barcoded Matrix tube containing 10ug of transfection-ready, dried plasmid DNA (reconstitute with 100 ul of water).

- Reconstitution Method:
1. Centrifuge at 5,000xg for 5min.
  2. Carefully open the tube and add 100ul of sterile water to dissolve the DNA.
  3. Close the tube and incubate for 10 minutes at room temperature.
  4. Briefly vortex the tube and then do a quick spin (less than 5000xg) to concentrate the liquid at the bottom.
  5. Store the suspended plasmid at -20°C. The DNA is stable for at least one year from date of shipping when stored at -20°C.

Note: Plasmids are not sterile. For experiments where strict sterility is required, filtration with 0.22um filter is required.

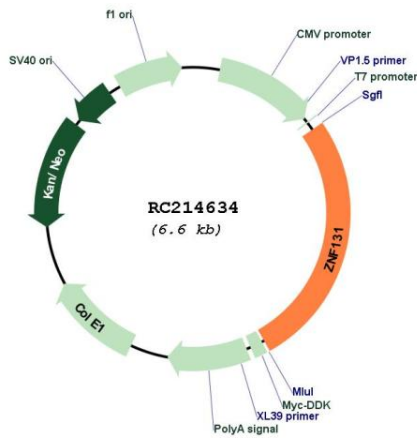
RefSeq: [NM\\_003432.3](#)

RefSeq Size: 2415 bp

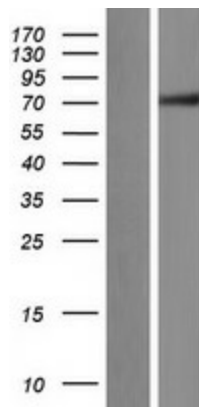
RefSeq ORF: 1770 bp

**Locus ID:** 7690  
**Cytogenetics:** 5p12  
**Protein Families:** Transcription Factors  
**MW:** 67.1 kDa  
**Gene Summary:** Plays a role during development and organogenesis as well as in the function of the adult central nervous system (By similarity). May be involved in transcriptional regulation as a repressor of ESR1/ER-alpha signaling.[UniProtKB/Swiss-Prot Function]

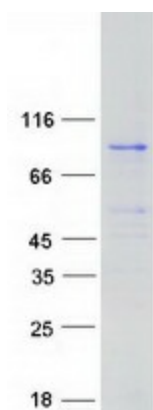
**Product images:**



Circular map for RC214634



Western blot validation of overexpression lysate (Cat# [LY418689]) using anti-DDK antibody (Cat# [TA50011-100]). Left: Cell lysates from untransfected HEK293T cells; Right: Cell lysates from HEK293T cells transfected with RC214634 using transfection reagent MegaTran 2.0 (Cat# [TT210002]).



Coomassie blue staining of purified ZNF131 protein (Cat# [TP314634]). The protein was produced from HEK293T cells transfected with ZNF131 cDNA clone (Cat# RC214634) using MegaTran 2.0 (Cat# [TT210002]).