

Product datasheet for **RC214631**

NKD2 (NM_033120) Human Tagged ORF Clone

Product data:

Product Type:	Expression Plasmids
Product Name:	NKD2 (NM_033120) Human Tagged ORF Clone
Tag:	Myc-DDK
Symbol:	NKD2
Synonyms:	Naked2
Mammalian Cell Selection:	Neomycin
Vector:	pCMV6-Entry (PS100001)
E. coli Selection:	Kanamycin (25 ug/mL)



[View online »](#)

ORF Nucleotide Sequence:

>RC214631 representing NM_033120
 Red=Cloning site Blue=ORF Green=Tags(s)

TTTTGTAATACGACTCACTATAGGGCGGCCGGGAATTCGTCGACTGGATCCGGTACCGAGGAGATCTGCC
 GCC**CGGATCGCC**

ATGGGGAAACTGCAGTCGAAGCACGCCGCCGCCGCCGAAGCGGAGAGAGACCCGGAAGGGGACAGCT
 TCGTGGCGTCCGCGTACGCGAGCGGCCGCAAGGCGCGGAGGAAGCGGAGCGCGCGCGGGACAAGCA
 GGAGCTGCCCAATGGGGACCCCAAGGAGGGCCTTTCCGGGAGGACCAGTGTCCCTACAGGTGGCACTC
 CCCGCTGAGAAAGCTGAGGGCCGCGAGCACCCGGGACAACCTCTCAGCGCAGATGACGGAGAGGGGACG
 CAAACCGCGAGGGCCCGGAGGACCGGGCGGCAGCGCCTCAACATTGACGCACTCCAGTGCATGTCTC
 GGTGGAGGAGGACGACGCCAGGAGTGGACGTTACGCTCTATGACTTTGACAACGCGGGAAGGTCACC
 AGGGAGGACATGTCCAGCCTCATGCACACCATCTATGAGGTCGTGGATGCCTCGGTCAACCACTCCTCGG
 GCAGCAGCAAGACCTCCGTGTGAAGCTAACCGTCAGCCTGAGCCCTCCAGCAAGAGGAAGGAGGGTCC
 TCCTGCTGGCCAGGACCGGGAGCCACCGTTGCAGGATGGAGGGTGAACGGCAGAGGAGCCAAGGGTG
 GCTGACAGGAGGTTGCTGCACACGTGAGGAGGCCAGTACTGACCCCAAGCCCTGCTCGGAGCGGGGGC
 CCTACTGCGTGGACGAGAACACGGAGCGCAGAAACCACTACCTGGACCTCGCCGGGATTGAGAACTACAC
 GTCCAGATTGCGCCCTGGGTCCCCTCCTGTGCAAGCAAAGCAGGAGCCCCAGGGCAGGGCCTCGCACCTC
 CAGGCCCGGTCCCCTCCAGGAGCCAGATACACATGCCGTACACCACCGCAGGTACAGGTGCTGGTGG
 AACACGTCGTGCCAGCCTCGGAGCCTGCTGCCCGGGCCCTGGACACGCAGCCCGGCCGAAGGGGCCGGA
 GAAGCAGTTCCCTCAAGTCCCCAAGGGCTCCGGGAAGCCGCTGGGGTCCAGCCAGCAGCAAGTCCGGG
 AAAGCCTTCAGCTACTACCTGCCGGCCGCTCCTGCCGCCAGGCCCTCAGGACGGCCACCACCTCCCGC
 AGCCCCACCGCCACCCTACGGCCACAAGCGGTACCGCCAAAAGGGCAGGAGGGCCACTCGCCACTCAA
 GGCCCCACACGCTCAGCCTGCCACAGTGGAGCAGGAGGTGGTGGCGGACCTGCCGCCACGCCAGCAGGA
 GAGGGCTACGCGGTGCCAGTGATCCAGCGGCACGAGCACCACCACCACGAGCACCACCACCACCACC
 ACCACCACCCTCCACCCGTTCC

ACGCGTACGCGGCCGCTCGAGCAGAACTCATCTCAGAAGAGGATCTGGCAGCAAATGATATCCTGGATT
 ACAAGGATGACGACGATAAGGTTTAA

Protein Sequence:

>RC214631 representing NM_033120
 Red=Cloning site Green=Tags(s)

MGKLQSKHAAAARKRRESPEGDSFVASAYASGRKGAAEAERRARDKQELPNGDPKEGPFREDQCPLQVAL
 PAEKAEGREHPGQLLSADDGERAANREGPRGPGGQRLNIDALQCDVSVEEDDRQEWFTFLYDFDNCGKVT
 REDMSSLMHTIYEVVDASVNHSSGSSKTLRVKLTVSPEPSSKRKEGPPAGQDREPTRCRMEGELAEPRV
 ADRRLSAHVRRPSTDPQPCSERGPYCVDENTERRNHYLDLAGIENYTSRFGPGSPVQAKQEPQGRASHL
 QARSRSQEPDTHAVHRRSQVLVEHVVPASEPAARALDTQPRPKGPEKQFLKSPKSGKPPGVPASSKSG
 KAFSYLPAVLPPQAPQDGHHLPPPPPPYGHKRYRQKREGHSPLKAPHAQPATVEHEVVRDLPTTPAG
 EGYAVPVIQRHEHHHHHEHHHHHHHHFHP

TRTRPLEQKLISEEDLAANDILDYKDDDDKV

Chromatograms:

https://cdn.origene.com/chromatograms/mg4260_g05.zip

Restriction Sites:

Sgfl-Mlul

Cloning Scheme:


ACCN: NM_033120

ORF Size: 1353 bp

OTI Disclaimer: The molecular sequence of this clone aligns with the gene accession number as a point of reference only. However, individual transcript sequences of the same gene can differ through naturally occurring variations (e.g. polymorphisms), each with its own valid existence. This clone is substantially in agreement with the reference, but a complete review of all prevailing variants is recommended prior to use. [More info](#)

OTI Annotation: This clone was engineered to express the complete ORF with an expression tag. Expression varies depending on the nature of the gene.

Components: The ORF clone is ion-exchange column purified and shipped in a 2D barcoded Matrix tube containing 10ug of transfection-ready, dried plasmid DNA (reconstitute with 100 ul of water).

Reconstitution Method:

1. Centrifuge at 5,000xg for 5min.
2. Carefully open the tube and add 100ul of sterile water to dissolve the DNA.
3. Close the tube and incubate for 10 minutes at room temperature.
4. Briefly vortex the tube and then do a quick spin (less than 5000xg) to concentrate the liquid at the bottom.
5. Store the suspended plasmid at -20°C. The DNA is stable for at least one year from date of shipping when stored at -20°C.

RefSeq: [NM_033120.4](#)

RefSeq Size: 1798 bp

RefSeq ORF: 1356 bp

Locus ID: 85409

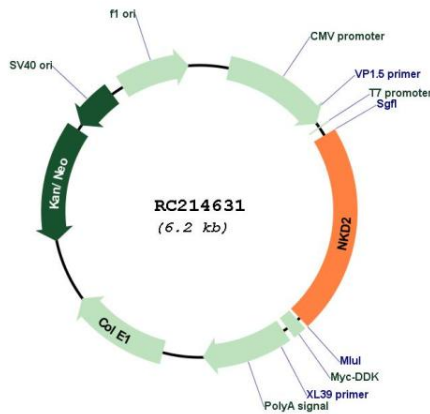
UniProt ID: [Q969F2](#)

Cytogenetics: 5p15.33

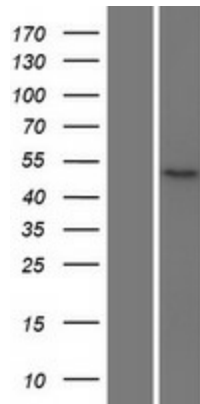
Protein Families: Druggable Genome
Protein Pathways: Wnt signaling pathway
MW: 49.9 kDa

Gene Summary: This gene encodes a member of a family of proteins that function as negative regulators of Wnt receptor signaling through interaction with Dishevelled family members. The encoded protein participates in the delivery of transforming growth factor alpha-containing vesicles to the cell membrane. Alternatively spliced transcript variants encoding multiple isoforms have been observed for this gene. [provided by RefSeq, Aug 2012]

Product images:



Circular map for RC214631



Western blot validation of overexpression lysate (Cat# [LY409725]) using anti-DDK antibody (Cat# [TA50011-100]). Left: Cell lysates from untransfected HEK293T cells; Right: Cell lysates from HEK293T cells transfected with RC214631 using transfection reagent MegaTran 2.0 (Cat# [TT210002]).