

Product datasheet for **RC214624**

SLC24A6 (SLC8B1) (NM_024959) Human Tagged ORF Clone

Product data:

Product Type:	Expression Plasmids
Product Name:	SLC24A6 (SLC8B1) (NM_024959) Human Tagged ORF Clone
Tag:	Myc-DDK
Symbol:	SLC24A6
Synonyms:	NCKX6; NCLX; SLC24A6
Mammalian Cell Selection:	Neomycin
Vector:	pCMV6-Entry (PS100001)
E. coli Selection:	Kanamycin (25 ug/mL)



[View online »](#)

ORF Nucleotide Sequence:

>RC214624 ORF sequence
 Red=Cloning site Blue=ORF Green=Tags(s)

TTTTGTAATACGACTCACTATAGGGCGGCCGGGAATTCGTCGACTGGATCCGGTACCGAGGAGATCTGCC
 GCC**GCGATCGCC**

ATGGCCGGCAGAAGGCTGAATCTGCGCTGGGACTGAGTGTGCTTGTGTGCTGCTAATGGCGGAGACAG
 TGCTCTGGGACTAGGGGCTCGTCTACAGGAGCTCACATTAGCCCCAGTTTCCAGCTTCAGGTGTGAACCA
 GACCCCGTGGTAGACTGCCGAAGGTGTGGCCTGAATGTCTCTGACCCTGTGACTTCATCCGGACC
 AACCTGACTGCCACAGTGATGGGGGTACCTGGACTACCTGGAAGGCATCTTCTGCCACTTCCCTCCCA
 GCCTCCTCCCTGGCTGTCACTCTCTACGTTTCTGGCTGCTCTACCTGTTTCTGATTCTGGGAGTCAC
 CGCAGCCAAGTTTTCTGCCCAACTTGTGGCCATTTCTACCACACTGAAGCTCTCCACAACGTGGCA
 GCGCTCACCTTCTGGCATTGGGAATGGTGCACCTGACATCTCAGTCCCTGGTGGCCTTCTCTGACC
 CGCACACAGCCGGCCTGGCCCTGGGGCACTGTTGGCGTGGCGTGTGGTTACCACAGTGGTGGCCGG
 AGGCATTACCATCTACACCCCTCATGGCTGCCTCCAGGCCCTTCTCAGGGACATCGTTTTCTACATG
 GTGGCTGTGTTCCCTGACCTTCTCATGCTTCCGTGGCAGGGTACCCTGGCATGGGCTCTGGGTACC
 TGGGCTTGTATGTGTTCTATGTGGTCACTGTGATTCTCTGCACCTGGATCTACCAACGGCAACGGAGAGG
 ATCTCTGTTCTGCCCCATGCCAGTTACTCCAGAGATCCTCTCAGACTCCGAGGAGGACCGGGTATCTTCT
 AATACCAACAGCTATGACTACGGTATGAGTACCGGCCGTGTTCTTCTACCAGGAGACCACGGCTCAGA
 TCCTGGTCCGGGCCCTCAATCCCTGGATTACATGAAGTGGAGAAGGAAATCAGCATACTGGAAAGCCCT
 CAAGGTGTTCAAGCTGCCTGTGGAGTTCCTGCTGCTCCTCACAGTCCCCGTCGTGGACCCGGACAAGGAT
 GACCAGAACTGGAACGGCCCTCAACTGTCTGCATCTGGTTATCAGCCCCCTGGTTGTGGTCTGACCC
 TGCAGTCGGGGACCTATGGTGTCTATGAGATAGCGGGCCTCGTCCCGTCTGGGTCGTGGTGTGATCGC
 AGGCACAGCCTTGGCTTCAGTGACCTTTTTTGGCACATCTGACAGCCAGCCCCCAGGCTTCACTGGCTC
 TTTGCTTCTGGGCTTCTGACCAGCGCCTGTGGATCAACCGCGCCGCCACAGAGGTGGTGAACATCT
 TGCGGTCCCTGGGTGTGGTCTTCCGGCTGAGCAACACTGTGCTGGGGCTCACGCTGCTGGCCTGGGGAA
 CAGCATTGGAGATGCCTTCTCGGATTTCACTGGCTCGCAGGGCTACCCACGGATGGCGTTCTCCGCC
 TGCTTTGGCGGCATCATTTCAACATCCTCGTGGGTGTGGGGCTGGGCTGCCTGCTCCAGATCTCCCGAA
 GCCACACAGAAGTGAAGCTGGAGCCAGACGGACTGCTGGTGTGGGCTCTGGCAGGCGCCCTGGGGCTCAG
 CCTCGTCTTCCCTGGTCTCAGTCCCATTGCAGTCTTCCAGCTCAGCAGAGTCTATGGCTTCTGCTG
 CTCTCTTCTACCTGAATTCTTGTGCTGGCCCTCCTACTGAATTTGGAGTATCACCTGAAAAGCA
 TG

ACGCGTACGCGGGCCGCTCGAGCAGAAACTCATCTCAGAAGAGGATCTGGCAGCAAATGATATCCTGGATT
 ACAAGGATGACGACGATAAGGTTTAA

Protein Sequence:

>RC214624 protein sequence
 Red=Cloning site Green=Tags(s)

MAGRRLNLRWALSVLVLLMAETVSGTRGSSTGAHISPQFPASGVNQTPVVDCRKYVCLNVSDRCDFI
 RNPDCSDGGYLDYLEGIFCHFPSSLPLAVTLVYVWLLYFLILGVTAAKFFCPNLSAISTTLKLSHNVA
 GVTFLAFNGAPDIFSAVAFSDPHTAGLALGALFGAGVLVTTVVAGGITILHPFMAASRPFFRDIVFYM
 VAVFLTFLMLFRGRVTLAWALGYLGLYFVYVTVILCTWIYQRQRGSLFCMPVTPPEILSDSEEDRVSS
 NTNSYDYGDEYRPLFFYQETTAQILVRLNPLDYMKWRKRSAYWKALKVFKLPVEFLLLLTPVVDPKD
 DQNWKRPLNCLHLVISPVVVLTLSQSGTYGVYIEGGLVPVWVVVVIAGTALASVTFATSDSQPRLHLW
 FAFGLFSLWLNAAATEVVNLRSLGVVFRLSNTVLGLTLLAWGNSIGDAFSDFTLARQGYPRMAFSA
 CFGGIIFNIVGVGLGCLLQISRSHTEVKLEPDGLLVWVLAGALGLSLVFSVPLQCFQLSRVYGFCL
 LLFYLNFLVVALLETFGVVHLKSM

TRTRPLEQKLISEEDLAANDILDYKDDDDKV

Chromatograms:

https://cdn.origene.com/chromatograms/mk6601_e06.zip

Restriction Sites: SgfI-MluI

Cloning Scheme:



ACCN: NM_024959

ORF Size: 1752 bp

OTI Disclaimer: The molecular sequence of this clone aligns with the gene accession number as a point of reference only. However, individual transcript sequences of the same gene can differ through naturally occurring variations (e.g. polymorphisms), each with its own valid existence. This clone is substantially in agreement with the reference, but a complete review of all prevailing variants is recommended prior to use. [More info](#)

OTI Annotation: This clone was engineered to express the complete ORF with an expression tag. Expression varies depending on the nature of the gene.

Components: The ORF clone is ion-exchange column purified and shipped in a 2D barcoded Matrix tube containing 10ug of transfection-ready, dried plasmid DNA (reconstitute with 100 ul of water).

- Reconstitution Method:**
1. Centrifuge at 5,000xg for 5min.
 2. Carefully open the tube and add 100ul of sterile water to dissolve the DNA.
 3. Close the tube and incubate for 10 minutes at room temperature.
 4. Briefly vortex the tube and then do a quick spin (less than 5000xg) to concentrate the liquid at the bottom.
 5. Store the suspended plasmid at -20°C. The DNA is stable for at least one year from date of shipping when stored at -20°C.

RefSeq: [NM_024959.3](#)

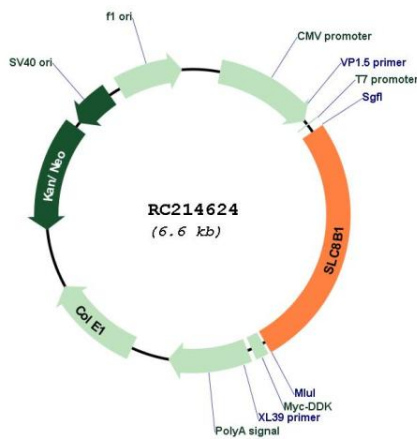
RefSeq Size: 2993 bp

RefSeq ORF: 1755 bp

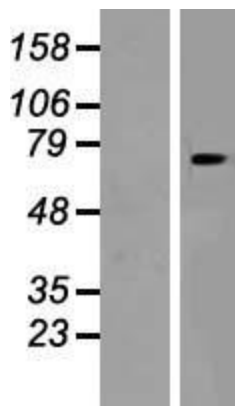
Locus ID: 80024

UniProt ID: [Q6J4K2](#)
Cytogenetics: 12q24.13
Domains: Na_Ca_Ex
Protein Families: Druggable Genome, Transmembrane
MW: 64.2 kDa
Gene Summary: SLC24A6 belongs to a family of potassium-dependent sodium/calcium exchangers that maintain cellular calcium homeostasis through the electrogenic countertransport of 4 sodium ions for 1 calcium ion and 1 potassium ion (Cai and Lytton, 2004 [PubMed 14625281]). [supplied by OMIM, Mar 2008]

Product images:



Circular map for RC214624



Western blot validation of overexpression lysate (Cat# [LY410957]) using anti-DDK antibody (Cat# [TA50011-100]). Left: Cell lysates from untransfected HEK293T cells; Right: Cell lysates from HEK293T cells transfected with RC214624 using transfection reagent MegaTran 2.0 (Cat# [TT210002]).