

## Product datasheet for RC214619

### GLEPP1 (PTPRO) (NM\_030669) Human Tagged ORF Clone

#### Product data:

Product Type:	Expression Plasmids
Product Name:	GLEPP1 (PTPRO) (NM_030669) Human Tagged ORF Clone
Tag:	Myc-DDK
Symbol:	GLEPP1
Synonyms:	GLEPP1; NPHS6; PTP-OC; PTP-U2; PTPROT; PTPU2; R-PTP-O
Mammalian Cell Selection:	Neomycin
Vector:	pCMV6-Entry (PS100001)
E. coli Selection:	Kanamycin (25 ug/mL)
ORF Nucleotide Sequence:	>RC214619 representing NM_030669. Blue=ORF Red=Cloning site Green=Tag(s)

```
GCTCGTTTGTAGTGAACCGTCAGAATTTTGTAAACGACTCACTATAGGGCGCCGGGAATTCGTCGACTG
GATCCGGTACCGAGGAGATCTGCCGCCGCGATCGCC
ATGGTTACAGAGATGAATCCCAATGTGGTAGTGATCTCCGTGCTGGCCATCCTTAGCACACTTTTAATT
GGACTGTTGCTTGTACCCCTCATTATTCTTAGGAAAAAGCATCTGCAGATGGCTAGGGAGTGTGGAGCT
GGTACATTTGTCAATTTGCATCCTTAGAGAGGGATGAAAGCTCCATACAACTGGCGTAGGAGTATA
TTTGCTTTCTAACCCCTGCTACCCTCATGTCTTTGGACTGATTATCTTTGGCATTATATTAATCCT
TGGAGTAAAAATGGTTTAAAGAAGAGGAAACTGACAAACCCGGTCAACTGGATGACTTTGATGCCTAT
ATTAAGGATATGGCCAAAGACTCTGACTATAAATTTCTCTTCAGTTTGAGGAGTTGAAATTGATTGGA
CTGGATATCCCACACTTTGCTGCAGATCTTCCACTGAATCGATGTAAAAACCGTTACACAAACATCCTA
CCATATGACTTACGCCGTGTGAGATTAGTCTCCATGAATGAAGAGGAAGGTGCAGACTACATCAATGCC
AACTATATTCCTGGATACAACCTACCCCAGGAGTATATTGCCACCCAGGGGCCACTGCCTGAAACCAGA
AATGACTTCTGGAAGATGGTCTGCAACAAAAGTCTCAGATTAATTGTCATGCTCACTCAGTGAATGAG
AAAAGGAGGGTGAATGTGACCATTAAGTGGCCATTACGGAAGAACCTATAGCCTATGGAGACATCACT
GTGGAGATGATTCAGAGGAAGAGCAGGACGACTGGGCCTGTAGACACTCCGGATCAACTATGCTGAC
GAGATGCAGGATGTGATGCATTTAACTACACTGCATGGCCTGATCATGGTGTGCCACAGCAAATGCT
GCAGAAAGTATCCTGCAGTTTGTACACATGGTCCGACAGCAAGCTACCAAGAGCAAAGGTCCCATGATC
ATTCAGTGCAGTGTGGCGTGGGACGGACAGGAACATTATTGCCCTGGACAGGCTCTTGACGACATT
CGGGATCATGAGTTTGTGACATCTTAGGGCTGGTGTGCAAAATGAGGTATACCGGATGTCTATGGTA
CAGACAGAGGAGCAGTACATTTTATCCATCAGTGTGTGCAACTGATGTGGATGAAGAAGAAGCAGCAG
TTCTGCATCAGTGTGATATACGAGAATGTTAGCAAGTCC
ACGCGTACGCGGCCGCTCGAGCAGAACTCATCTCAGAAGAGGATCTGGCAGCAAATGATATCCTGGAT
TACAAGGATGACGACGATAAGGTTTAAACGGCCGCGC
```



[View online »](#)

**Protein Sequence:** >Peptide sequence encoded by RC214619  
 Blue=ORF Red=Cloning site Green=Tag(s)

MVTEMNPNVVVISVLAILSTLLIGLLLVTLLIILRKKHLQMARECGAGTFVNFASLERDGLPYNWRRSI  
 FAFLTLLPSCWTDYLLAFYINPWSKNGLKKRKL TNPVQLDDFDAYIKDMAKDSYKFSLQFEELKIG  
 LDIPHFAADLPLNRCKNRYTNILPYDFSRVRLVSMNEEGADYINANYIPGYNSPQEYIATQGLPETR  
 NDFWKMLVQQKSQIIVMLTQCNEKRRVKCDHYWPFTEEP IAYGDI TVEMI SEEEEQDDWACRHFRIYAD  
 EMQDVMHFNYTAWPDHGVPTANAASILQFVHMVRQQATKSKGPMIIHCSAGVGRGTGTFIALDRLLQHI  
 RDHEFVDILGLVSEMRSYRMSMVQTEEQYIFIHQCVQLMWMKKKQQFCISDVIYENVSKS  
 TRTRPLEQKLISEEDLAANDILDYKDDDDKV

Recombinant protein using RC214619 also available, [TP314619](#)

**Chromatograms:** [https://cdn.origene.com/chromatograms/mk6608\\_a02.zip](https://cdn.origene.com/chromatograms/mk6608_a02.zip)

**Restriction Sites:** SgfI-MluI

**Cloning Scheme:**



**ACCN:** NM\_030669

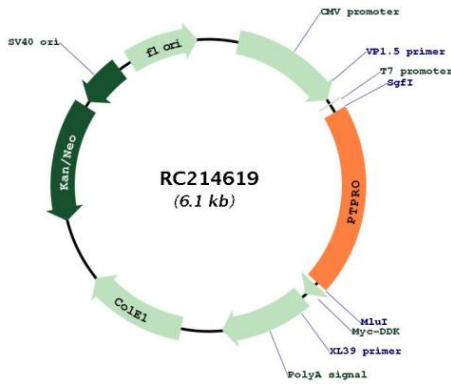
**ORF Size:** 1215 bp

**OTI Disclaimer:** Due to the inherent nature of this plasmid, standard methods to replicate additional amounts of DNA in E. coli are highly likely to result in mutations and/or rearrangements. Therefore, OriGene does not guarantee the capability to replicate this plasmid DNA. Additional amounts of DNA can be purchased from OriGene with batch-specific, full-sequence verification at a reduced cost. Please contact our customer care team at [custsupport@origene.com](mailto:custsupport@origene.com) or by calling 301.340.3188 option 3 for pricing and delivery.

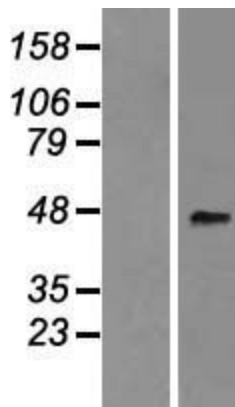
The molecular sequence of this clone aligns with the gene accession number as a point of reference only. However, individual transcript sequences of the same gene can differ through naturally occurring variations (e.g. polymorphisms), each with its own valid existence. This clone is substantially in agreement with the reference, but a complete review of all prevailing variants is recommended prior to use. [More info](#)

<b>OTI Annotation:</b>	This clone was engineered to express the complete ORF with an expression tag. Expression varies depending on the nature of the gene.
<b>Components:</b>	The ORF clone is ion-exchange column purified and shipped in a 2D barcoded Matrix tube containing 10ug of transfection-ready, dried plasmid DNA (reconstitute with 100 ul of water).
<b>Reconstitution Method:</b>	<ol style="list-style-type: none"><li>1. Centrifuge at 5,000xg for 5min.</li><li>2. Carefully open the tube and add 100ul of sterile water to dissolve the DNA.</li><li>3. Close the tube and incubate for 10 minutes at room temperature.</li><li>4. Briefly vortex the tube and then do a quick spin (less than 5000xg) to concentrate the liquid at the bottom.</li><li>5. Store the suspended plasmid at -20°C. The DNA is stable for at least one year from date of shipping when stored at -20°C.</li></ol>
<b>RefSeq:</b>	<a href="#">NM_030669.1</a> , <a href="#">NM_030669.2</a> , <a href="#">NM_030669.3</a> , <a href="#">NP_109594.1</a>
<b>RefSeq Size:</b>	3970 bp
<b>RefSeq ORF:</b>	1218 bp
<b>Locus ID:</b>	5800
<b>UniProt ID:</b>	<a href="#">Q16827</a>
<b>Cytogenetics:</b>	12p13-p12
<b>Domains:</b>	Y_phosphatase
<b>Protein Families:</b>	Phosphatase, Transmembrane
<b>MW:</b>	47.2 kDa
<b>Gene Summary:</b>	This gene encodes a member of the R3 subtype family of receptor-type protein tyrosine phosphatases. These proteins are localized to the apical surface of polarized cells and may have tissue-specific functions through activation of Src family kinases. This gene contains two distinct promoters, and alternatively spliced transcript variants encoding multiple isoforms have been observed. The encoded proteins may have multiple isoform-specific and tissue-specific functions, including the regulation of osteoclast production and activity, inhibition of cell proliferation and facilitation of apoptosis. This gene is a candidate tumor suppressor, and decreased expression of this gene has been observed in several types of cancer. [provided by RefSeq, May 2011]

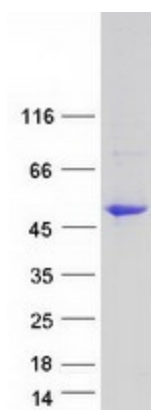
Product images:



Circular map for RC214619



Western blot validation of overexpression lysate (Cat# [LY410739]) using anti-DDK antibody (Cat# [TA50011-100]). Left: Cell lysates from untransfected HEK293T cells; Right: Cell lysates from HEK293T cells transfected with [RC220785] using transfection reagent MegaTran 2.0 (Cat# [TT210002]).



Coomassie blue staining of purified PTPRO protein (Cat# [TP314619]). The protein was produced from HEK293T cells transfected with PTPRO cDNA clone (Cat# RC214619) using MegaTran 2.0 (Cat# [TT210002]).