

Product datasheet for **RC214616**

FSH beta (FSHB) (NM_001018080) Human Tagged ORF Clone

Product data:

Product Type: Expression Plasmids
Product Name: FSH beta (FSHB) (NM_001018080) Human Tagged ORF Clone
Tag: Myc-DDK
Symbol: FSH beta
Synonyms: HH24
Mammalian Cell Selection: Neomycin
Vector: pCMV6-Entry (PS100001)
E. coli Selection: Kanamycin (25 ug/mL)
ORF Nucleotide Sequence: >RC214616 representing NM_001018080
Red=Cloning site Blue=ORF Green=Tags(s)

TTTTGTAATACGACTCACTATAGGGCGGCCGGAATTCGTCGACTGGATCCGGTACCGAGGAGATCTGCC
GCC**CGATCGCC**

ATGAAGACACTCCAGTTTTTCTCCTTTCTGTTGCTGGAAGCAATCTGCTGCAATAGCTGTGAGCTGA
CCAACATCACCATTGCAATAGAGAAAGAAGAATGTCGTTTCTGCATAAGCATCAACACCCTTGGTGTGC
TGGCTACTGCTACACCAGGGATCTGGTGTATAAGGACCCAGCCAGGCCAAAATCCAGAAAACATGTACC
TTCAAGGAAGTGGTATACGAAACAGTGAGAGTGCCCGGCTGTGCTCACCATGCAGATTCTTGTATACAT
ACCCAGTGCCACCCAGTGTCACTGTGGCAAGTGTGACAGCGACAGCACTGATTGTACTGTGCGAGGCCCT
GGGCCAGCTACTGCTCCTTTGGTGAATGAAAGAA

ACGCGTACGCGGCCGCTCGAGCAGAAACTCATCTCAGAAGAGGATCTGGCAGCAAATGATATCCTGGATT
ACAAGGATGACGACGATAAGGTTTAA

Protein Sequence: >RC214616 representing NM_001018080
Red=Cloning site Green=Tags(s)
MKTLQFFFLFCCWKAICCNSELNITIAIEKEECRFCISINTTWCAGYCYTRDLVYKDPARPKIQKTCT
FKELVYETVRVPGCAHHADSLYTPVATQCHCGKCDSDSTDCTVRGLGPSYCSFGEMKE

TRTRPLEQKLISEEDLAANDILDYKDDDDKV

Chromatograms: https://cdn.origene.com/chromatograms/mk6100_a08.zip

Restriction Sites: SgfI-MluI



[View online »](#)

Cloning Scheme:


ACCN: NM_001018080

ORF Size: 387 bp

OTI Disclaimer: The molecular sequence of this clone aligns with the gene accession number as a point of reference only. However, individual transcript sequences of the same gene can differ through naturally occurring variations (e.g. polymorphisms), each with its own valid existence. This clone is substantially in agreement with the reference, but a complete review of all prevailing variants is recommended prior to use. [More info](#)

OTI Annotation: This clone was engineered to express the complete ORF with an expression tag. Expression varies depending on the nature of the gene.

Components: The ORF clone is ion-exchange column purified and shipped in a 2D barcoded Matrix tube containing 10ug of transfection-ready, dried plasmid DNA (reconstitute with 100 ul of water).

- Reconstitution Method:**
1. Centrifuge at 5,000xg for 5min.
 2. Carefully open the tube and add 100ul of sterile water to dissolve the DNA.
 3. Close the tube and incubate for 10 minutes at room temperature.
 4. Briefly vortex the tube and then do a quick spin (less than 5000xg) to concentrate the liquid at the bottom.
 5. Store the suspended plasmid at -20°C. The DNA is stable for at least one year from date of shipping when stored at -20°C.

Note: Plasmids are not sterile. For experiments where strict sterility is required, filtration with 0.22um filter is required.

RefSeq: [NM_001018080.3](#)

RefSeq Size: 1906 bp

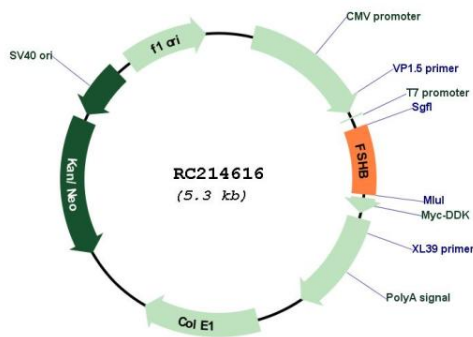
RefSeq ORF: 390 bp

Locus ID: 2488
UniProt ID: [P01225](#)
Cytogenetics: 11p14.1

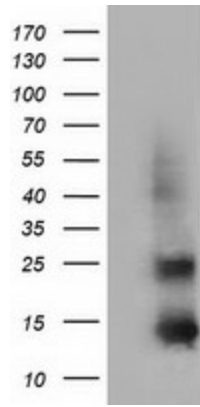
Protein Families: Druggable Genome, Secreted Protein
Protein Pathways: GnRH signaling pathway, Neuroactive ligand-receptor interaction
MW: 14.7 kDa

Gene Summary: The pituitary glycoprotein hormone family includes follicle-stimulating hormone, luteinizing hormone, chorionic gonadotropin, and thyroid-stimulating hormone. All of these glycoproteins consist of an identical alpha subunit and a hormone-specific beta subunit. This gene encodes the beta subunit of follicle-stimulating hormone. In conjunction with luteinizing hormone, follicle-stimulating hormone induces egg and sperm production. Alternative splicing results in two transcript variants encoding the same protein. [provided by RefSeq, Jul 2008]

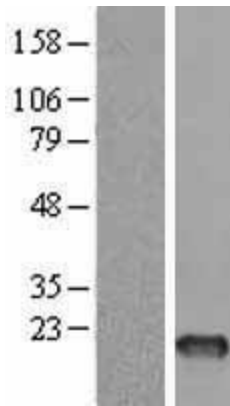
Product images:



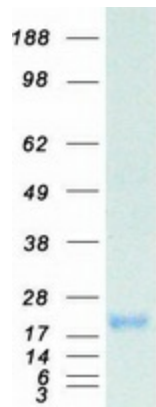
Circular map for RC214616



HEK293T cells were transfected with the pCMV6-ENTRY control (Cat# [PS100001], Left lane) or pCMV6-ENTRY FSHB (Cat# RC214616, Right lane) cDNA for 48 hrs and lysed. Equivalent amounts of cell lysates (5 ug per lane) were separated by SDS-PAGE and immunoblotted with anti-FSHB (Cat# [TA501603]). Positive lysates [LY400397] (100ug) and [LC400397] (20ug) can be purchased separately from OriGene.



Western blot validation of overexpression lysate (Cat# [LY400397]) using anti-DDK antibody (Cat# [TA50011-100]). Left: Cell lysates from untransfected HEK293T cells; Right: Cell lysates from HEK293T cells transfected with RC214616 using transfection reagent MegaTran 2.0 (Cat# [TT210002]).



Coomassie blue staining of purified FSHB protein (Cat# [TP314616]). The protein was produced from HEK293T cells transfected with FSHB cDNA clone (Cat# RC214616) using MegaTran 2.0 (Cat# [TT210002]).