

Product datasheet for **RC214615**

RNF5 (NM_006913) Human Tagged ORF Clone

Product data:

Product Type: Expression Plasmids
Product Name: RNF5 (NM_006913) Human Tagged ORF Clone
Tag: Myc-DDK
Symbol: RNF5
Synonyms: RING5; RMA1
Mammalian Cell Selection: Neomycin
Vector: pCMV6-Entry (PS100001)
E. coli Selection: Kanamycin (25 ug/mL)
ORF Nucleotide Sequence: >RC214615 representing NM_006913
Red=Cloning site Blue=ORF Green=Tags(s)

TTTTGTAATACGACTCACTATAGGGCGGCCGGAATTCGTCGACTGGATCCGGTACCGAGGAGATCTGCC
GCC**CGATCGCC**

ATGGCAGCAGCGGAGGAGGACGGGGCCCCGAAGGGCCAAATCGCGAGCGGGCGGGCGGGCGCGA
CCTTCGAATGTAATATATGTTTGGAGACTGCTCGGAAGCTGTGGTCAGTGTGTGTGCCACCTGTACTG
TTGGCCATGTCTTCATCAGTGGCTGGAGACACGGCCAGAACGGCAAGAGTGTCCAGTATGTAAGCTGGG
ATCAGCAGAGAGAAGTTGTCCCGCTTATGGCGAGGGAGCCAGAAGCCCCAGGATCCCAGATTA
CTCCACCCGCCCCAGGGCCAGAGACCAGCTCCGGAGAGCAGAGGGGATTCCAGCCATTGGTGATAC
CGGGGCTTCCACTTCTCATTTGGTGTGGTGCTTTCCCTTTGGCTTTTCCACCACCGTCTCAATGCC
CATGAGCCTTTCGCGGGGTACAGGTGTGGATCTGGGACAGGGTCACCCAGCCTCCAGCTGGCAGGATT
CCCTCTTCTGTTTCTCGCCATCTTCTTTTTTTGGCTGCTCAGTATT

ACGCGTACGCGGCCGCTCGAGCAGAACTCATCTCAGAAGAGGATCTGGCAGCAAATGATATCCTGGATT
ACAAGGATGACGACGATAAGGTTTAA

Protein Sequence: >RC214615 representing NM_006913
Red=Cloning site Green=Tags(s)

MAAAEEEDGGPEGPNRERGGAGATFECNICLETAREAVVSVCGHLYCWPCLHQWLETRPERQECVPCKAG
ISREKVVPLYGRGSQKPQDPRPKTPRPQGRPAPESRGGFQPFGDTGGFHF SFGVGAFFGFFTTVFNA
HEPFRRGTGVDLGQHPASSWQDSLFLFLAIFFFWLLSI

TRTRPLEQKLISEEDLAANDILDYKDDDDKV

Chromatograms: https://cdn.origene.com/chromatograms/mk6105_a03.zip



[View online »](#)

Restriction Sites: SgfI-MluI

Cloning Scheme:



ACCN: NM_006913

ORF Size: 540 bp

OTI Disclaimer: The molecular sequence of this clone aligns with the gene accession number as a point of reference only. However, individual transcript sequences of the same gene can differ through naturally occurring variations (e.g. polymorphisms), each with its own valid existence. This clone is substantially in agreement with the reference, but a complete review of all prevailing variants is recommended prior to use. [More info](#)

OTI Annotation: This clone was engineered to express the complete ORF with an expression tag. Expression varies depending on the nature of the gene.

Components: The ORF clone is ion-exchange column purified and shipped in a 2D barcoded Matrix tube containing 10ug of transfection-ready, dried plasmid DNA (reconstitute with 100 ul of water).

Reconstitution Method:

1. Centrifuge at 5,000xg for 5min.
2. Carefully open the tube and add 100ul of sterile water to dissolve the DNA.
3. Close the tube and incubate for 10 minutes at room temperature.
4. Briefly vortex the tube and then do a quick spin (less than 5000xg) to concentrate the liquid at the bottom.
5. Store the suspended plasmid at -20°C. The DNA is stable for at least one year from date of shipping when stored at -20°C.

RefSeq: [NM_006913.4](#)

RefSeq Size: 1179 bp

RefSeq ORF: 543 bp

Locus ID: 6048

UniProt ID: [Q99942](#)

Cytogenetics: 6p21.32

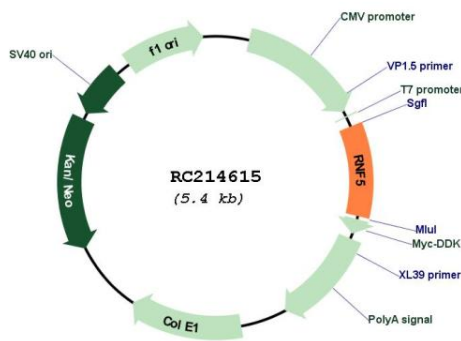
Domains: RING

Protein Families: Transmembrane

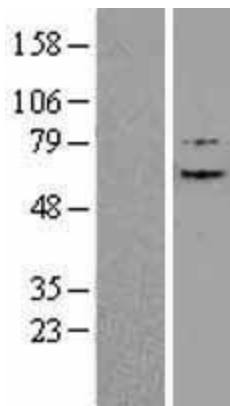
MW: 19.7 kDa

Gene Summary: The protein encoded by this gene contains a RING finger, which is a motif known to be involved in protein-protein interactions. This protein is a membrane-bound ubiquitin ligase. It can regulate cell motility by targeting paxillin ubiquitination and altering the distribution and localization of paxillin in cytoplasm and cell focal adhesions. [provided by RefSeq, Jul 2008]

Product images:



Circular map for RC214615



Western blot validation of overexpression lysate (Cat# [LY402057]) using anti-DDK antibody (Cat# [TA50011-100]). Left: Cell lysates from untransfected HEK293T cells; Right: Cell lysates from HEK293T cells transfected with RC214615 using transfection reagent MegaTran 2.0 (Cat# [TT210002]).