

Product datasheet for **RC214610**

RIC8 (RIC8B) (NM_018157) Human Tagged ORF Clone

Product data:

Product Type:	Expression Plasmids
Product Name:	RIC8 (RIC8B) (NM_018157) Human Tagged ORF Clone
Tag:	Myc-DDK
Symbol:	RIC8
Synonyms:	hSyn; RIC8
Mammalian Cell Selection:	Neomycin
Vector:	pCMV6-Entry (PS100001)
E. coli Selection:	Kanamycin (25 ug/mL)



[View online »](#)

ORF Nucleotide Sequence:

>RC214610 representing NM_018157
 Red=Cloning site Blue=ORF Green=Tags(s)

TTTTGTAATACGACTCACTATAGGGCGGCCGGAATTCGTCGACTGGATCCGGTACCGAGGAGATCTGCC
 GCC**GCGATCGCC**

ATGGATGAGGAGCGCCCTCTACATCGTCCGGCCGGCAAGCAGGGGCTATCGAGCGGGTCTGAGGG
 ATTACAGCGACAAGCATAGGGCTACTTTCAAATTTGAATCAACAGATGAAGATAAAAAGAAAGAACTCTG
 TGAAGGCATATTTAAAGTCCTTATAAAGGACATCCCAACAACATGTCAAGTGTCTGCTGGAAGTACTC
 CGCATTCTCTCCAGAGACAAAAGGTTTTAGTTCTGTGACAACAAAGGAAAATATGCAGATACTGCTGC
 GACTAGCCAAGCTAAATGAGTTAGATGATCTTTGGAGAAAGTATCAGAGTTCAGTATTGTGGAGTC
 ATAAAAATGTCTGTGAATATAGTGTTCACACAGTCAGATGGCACAGCAGCTCAGCCTGGAACCTAATCTT
 GCTGCAAAGCTCTGTAACCTCTGAGAAAGTGAAGGACCGGAAATTTATCAATGACATTAAGTGCCTTG
 ACTTGCCTTCTCTTCTGTCACTTTTGCACACCGACATCAGGTACAATTGCGCTATGAGCTCCA
 GGGACTACCGCTGCTAACGCAGATCTTGGAAAGTGCCTTAGCATCAAGTGGACCGATGAGTATGAATCG
 GCCATAGACCATAATGGACCTCCTCTCACTCAGGAGACAGACTGTGCCATTGAGGCCCTCAAAGCTC
 TCTTCAATGTGACGGTAGACAGTTGGAAGTGCATAAAGAGAGTGATTCTCATCAGTTCCGTGTAATGGC
 AGCTGTCTTCGTCATTGTTTACTAATCGTAGGTCCTCAACTGAAGACAAAACAGAAGAGCTACACAGCAAT
 GCAGTCAACCTTTAAGCAATGTTCCAGTCTCTTGTGGATGTTCTCATTTGTCGGTTAACCCATGAAG
 AAACAGCCCAAGAGGCAACGACTCTAGATGAACTGCCAGTAATAAACAGCTGAGAAAGAAACAGTTTT
 GAAAAACAATACCATGGTATAAATGGTATGAATATGGAGGCCATTCATGTTTTACTGAATTTATGGAG
 AAGAGAATAGACAAGGGAAGCAGCTATAGAGAGGGTCTAACTCCAGTTCAGCTTATTAACCGAATGTT
 CCCGAGCCCATCGAAACATCCGAAAATTTCTCAAAGATCAGTTTTACCACCGTTGAGGGATGTGACAAA
 TCGACCTGAAGTTGGCTCAACTGTGAGAAATAAGCTGGTGGCCTCATGACACATGTTGACCTTGGAGTC
 AAGCAAATGCTGCTGAATTCCTTTTTGTCTTTGCAAAGAGAGAGTGGATAGTCTGCTGAAATACACTG
 GCTATGGGAATGCTGCAGGACTGTTGGCGCCAGGGCCCTCTGGCTGGAGGAAGAGGAGATAATTGGTA
 CTCAGAGGATGAGGACACAGACTGAAGAATACAAAAATGCAAAACAAAAGAGGAGTTGCTTAAACCA
 ATGGGACTAAAACCTGATGGGACAATAACGCCTTTGGAGGAAGCACTCAACCAGTACTCTGTCATCGAAG
 AGACCAGCTCTGACACAGAC

ACGCGTACGCGGCCGCTCGAGCAGAAACTCATCTCAGAAGAGGATCTGGCAGCAAATGATATCCTGGATT
 ACAAGGATGACGACGATAAGGTTTAA

Protein Sequence:

>RC214610 representing NM_018157
 Red=Cloning site Green=Tags(s)

MDEERALYIVRAGEAGAIERVLRDYSKHRATFKFESTDEDKRRKLCCEGIFKVLIKDIPTTCQVSCLEVL
 RILSRDKKVLVPVTTKENMQILLRLAKLNELDDSLEKVFVIVESLKLCNIVFNSQMAQQLSLELNL
 AAKLCNLLRKCKDRKFINDIKCFDLRLLFLLSLLHTDIRSQLRYELQGLPLLQIILESAFSIKWTEYES
 AIDHNGPPLSPQETDCAIEALKALFNVTVDSWKVHKESDSHQFRVMAAVLRHCLLIVGPTEDKTEELHSN
 AVNLLSNVPVSLDVLICPLTHEETAQEATTLDELPSNKTAEKETVTKNNTMVYNGMMEAIHVLLNFME
 KRIDKGSYREGLTPVLSLLTECSRAHRNIRKFLKDQVLPPLRDVTNRPEVGSTVRNKLVRMTHVDLGV
 KQIAAEFLFVLCKERVDSLLKYTYGNAAGLLAARGLLAGGRGDNWYSEDEDTDEEYKNAKPEELLKP
 MGLKPDGTITPLEEALNQYSVIEETSSDTD

TRTRPLEQKLISEEDLAANDILDYKDDDDKV

Chromatograms:

https://cdn.origene.com/chromatograms/mk8115_c05.zip

Restriction Sites:

Sgfl-Mlul

Cloning Scheme:


ACCN: NM_018157

ORF Size: 1560 bp

OTI Disclaimer: The molecular sequence of this clone aligns with the gene accession number as a point of reference only. However, individual transcript sequences of the same gene can differ through naturally occurring variations (e.g. polymorphisms), each with its own valid existence. This clone is substantially in agreement with the reference, but a complete review of all prevailing variants is recommended prior to use. [More info](#)

OTI Annotation: This clone was engineered to express the complete ORF with an expression tag. Expression varies depending on the nature of the gene.

Components: The ORF clone is ion-exchange column purified and shipped in a 2D barcoded Matrix tube containing 10ug of transfection-ready, dried plasmid DNA (reconstitute with 100 ul of water).

Reconstitution Method:

1. Centrifuge at 5,000xg for 5min.
2. Carefully open the tube and add 100ul of sterile water to dissolve the DNA.
3. Close the tube and incubate for 10 minutes at room temperature.
4. Briefly vortex the tube and then do a quick spin (less than 5000xg) to concentrate the liquid at the bottom.
5. Store the suspended plasmid at -20°C. The DNA is stable for at least one year from date of shipping when stored at -20°C.

RefSeq: [NM_018157.4](#)

RefSeq Size: 4989 bp

RefSeq ORF: 1563 bp

Locus ID: 55188

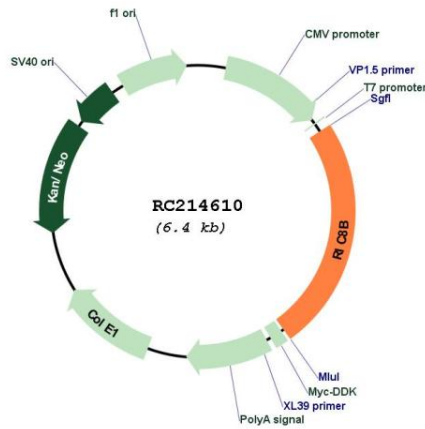
UniProt ID: [Q9NVN3](#)

Cytogenetics: 12q23.3

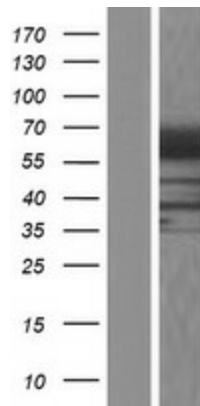
MW: 58.8 kDa

Gene Summary: Guanine nucleotide exchange factor (GEF), which can activate some, but not all, G-alpha proteins by exchanging bound GDP for free GTP. Able to potentiate G(olf)-alpha-dependent cAMP accumulation suggesting that it may be an important component for odorant signal transduction.[UniProtKB/Swiss-Prot Function]

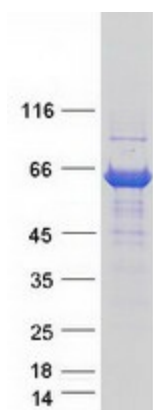
Product images:



Circular map for RC214610



Western blot validation of overexpression lysate (Cat# [LY413256]) using anti-DDK antibody (Cat# [TA50011-100]). Left: Cell lysates from untransfected HEK293T cells; Right: Cell lysates from HEK293T cells transfected with RC214610 using transfection reagent MegaTran 2.0 (Cat# [TT210002]).



Coomassie blue staining of purified RIC8B protein (Cat# [TP314610]). The protein was produced from HEK293T cells transfected with RIC8B cDNA clone (Cat# RC214610) using MegaTran 2.0 (Cat# [TT210002]).