

Product datasheet for RC214607

CDK3 (NM_001258) Human Tagged ORF Clone

Product data:

| | |
|---------------------------|---|
| Product Type: | Expression Plasmids |
| Product Name: | CDK3 (NM_001258) Human Tagged ORF Clone |
| Tag: | Myc-DDK |
| Symbol: | CDK3 |
| Mammalian Cell Selection: | Neomycin |
| Vector: | pCMV6-Entry (PS100001) |
| E. coli Selection: | Kanamycin (25 ug/mL) |
| ORF Nucleotide Sequence: | >RC214607 representing NM_001258 Red=Cloning site Blue=ORF Green=Tags(s) |

TTTTGTAATACGACTCACTATAGGGCGGCCGGAATTCGTCGACTGGATCCGGTACCGAGGAGATCTGCC
GCC**CGATCGCC**

ATGGATATGTTCCAGAAGGTAGAGAAGATCGGAGAGGGCACCTATGGGGTGGTGTACAAGCCAAGAACA
GGGAGACAGGGCAGCTGGTGGCCCTGAAGAAGATCAGACTGGATTTGGAGATGGAGGGGGTCCCAAGCAC
TGCCATCAGGGAGATCTCGCTGCTCAAGGAAGTGAAGCACCCCAACATCGTCCGACTGCTGGACGTGGTG
CACAACGAGAGGAAGCTCTATCTGGTGTGGTTCCTCAGCCAGGACCTGAAGAAGTACATGGACTCCA
CCCCAGGCTCAGAGCTCCCCCTGCACCTCATCAAGAGCTACCTCTCCAGCTGCTGCAGGGGGTGAGTTT
CTGCCACTCACATCGGGTCATCCACCGAGACCTGAAGCCCCAGAACCTGCTCATCAATGAGTTGGGTGCC
ATCAAGCTGGCTGACTTCGGCCTGGCTCGCGCCTTCGGGGTGCCCTGCGCACCTACACCCATGAGGTGG
TGACACTGTGGTATCGCGCCCCGAGATTCTCTGGGCAGCAAGTTCTATACCACAGCTGTGGATATCTG
GAGCATTGGTTGCATCTTTCAGAGATGGTACTCGAAAAGCCCTGTTTCCTGGTACTCTGAGATTGAC
CAGCTCTTTCGTATCTTTCGTATGCTGGGGACACCCAGCGAAGACACATGGCCCCGGGTACCCAGCTGC
CTGACTATAAGGGCAGCTTCCCTAAGTGGACCAGGAAGGGACTGGAAGAGATTGTGCCAATCTGGAGCC
AGAGGGCAGGGACCTGCTCATGCAACTCCTGCAGTATGACCCAGCCAGCGGATCACAGCCAAGACTGCC
CTGGCCCCACCGTACTTCTCATCCCTGAGCCCTCCCCAGCTGCCCGCCAGTATGTGCTGCAGCGATTCC
GCCAT

ACGCGTACGCGGCCGCTCGAGCAGAAACTCATCTCAGAAGAGGATCTGGCAGCAAATGATATCCTGGATT
ACAAGGATGACGACGATAAGGTTTAA



[View online »](#)

Protein Sequence: >RC214607 representing NM_001258
Red=Cloning site Green=Tags(s)

MDMFQKVEKIGEGTYGVVYKAKNRETGQLVALKKIRLDLEMEGVPSTAIRESLLKELKHPNIVRLLDVV
 HNERKLYLVFEFLSQLKKYMDSTPGSELPLHLIKSYLFQLLQGVSFCHSHRVIHRDLKPQNLLINELGA
 IKLADFLARAFGVPLRITYTHEVVTWLYRAPEILLGSKFYTTAVDIWSIGCIFAEMVTRKALFPGDSEID
 QLFRIFRMLGTPSEDTWPGVTQLPDYKGSFPKWTRKGLLEEIVPNLEPEGRDLLMQLLQYDPSQRITAKTA
 LAHPYFSSPEPSPAARQYVLQFRFH

TRTRPLEQKLISEEDLAANDILDYKDDDDKV

Chromatograms: https://cdn.origene.com/chromatograms/mg4189_b01.zip

Restriction Sites: SgfI-MluI

Cloning Scheme:

Cloning sites used for ORF Shuttling:



ACCN: NM_001258

ORF Size: 915 bp

OTI Disclaimer: The molecular sequence of this clone aligns with the gene accession number as a point of reference only. However, individual transcript sequences of the same gene can differ through naturally occurring variations (e.g. polymorphisms), each with its own valid existence. This clone is substantially in agreement with the reference, but a complete review of all prevailing variants is recommended prior to use. [More info](#)

OTI Annotation: This clone was engineered to express the complete ORF with an expression tag. Expression varies depending on the nature of the gene.

Components: The ORF clone is ion-exchange column purified and shipped in a 2D barcoded Matrix tube containing 10ug of transfection-ready, dried plasmid DNA (reconstitute with 100 ul of water).

Reconstitution Method:

1. Centrifuge at 5,000xg for 5min.
2. Carefully open the tube and add 100ul of sterile water to dissolve the DNA.
3. Close the tube and incubate for 10 minutes at room temperature.
4. Briefly vortex the tube and then do a quick spin (less than 5000xg) to concentrate the liquid at the bottom.
5. Store the suspended plasmid at -20°C. The DNA is stable for at least one year from date of shipping when stored at -20°C.

RefSeq: [NM_001258.2](#), [NP_001249.1](#)

RefSeq Size: 1161 bp

RefSeq ORF: 918 bp

Locus ID: 1018

UniProt ID: [Q00526](#)

Cytogenetics: 17q25.1

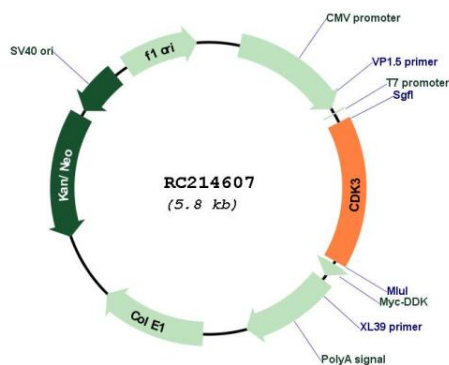
Domains: pkinase, TyrKc, S_TKc

Protein Families: Druggable Genome, Protein Kinase

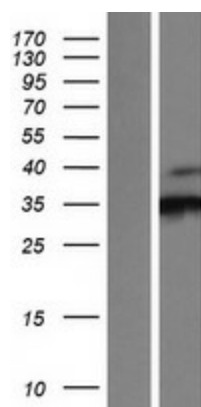
MW: 34.9 kDa

Gene Summary: This gene encodes a member of the cyclin-dependent protein kinase family. The protein promotes entry into S phase, in part by activating members of the E2F family of transcription factors. The protein also associates with cyclin C and phosphorylates the retinoblastoma 1 protein to promote exit from G0. [provided by RefSeq, Jul 2008]

Product images:



Circular map for RC214607



Western blot validation of overexpression lysate (Cat# [LY420045]) using anti-DDK antibody (Cat# [TA50011-100]). Left: Cell lysates from untransfected HEK293T cells; Right: Cell lysates from HEK293T cells transfected with RC214607 using transfection reagent MegaTran 2.0 (Cat# [TT210002]).