

Product datasheet for **RC214606**

PML Protein (PML) (NM_002675) Human Tagged ORF Clone

Product data:

Product Type:	Expression Plasmids
Product Name:	PML Protein (PML) (NM_002675) Human Tagged ORF Clone
Tag:	Myc-DDK
Symbol:	PML Protein
Synonyms:	MYL; PP8675; RNF71; TRIM19
Mammalian Cell Selection:	Neomycin
Vector:	pCMV6-Entry (PS100001)
E. coli Selection:	Kanamycin (25 ug/mL)



[View online »](#)

ORF Nucleotide Sequence:

>RC214606 representing NM_002675
 Red=Cloning site Blue=ORF Green=Tags(s)

TTTTGTAATACGACTCACTATAGGGCGGCCGGGAATTCGTCGACTGGATCCGGTACCGAGGAGATCTGCC
 GCC**CGGATCGCC**

ATGGAGCCTGCACCCGCCGATCTCCGAGGCCAGCAGGACCCGCCCGCCAGGAGCCACCATGC
 CTCCTCCCGAGACCCCTCTGAAGGCCGCCAGCCAGCCAGCCAGCCCTACAGAGCGAGCCCGC
 TTCGGAGGAGGAGTTCAGTTTCTGCGCTGCCAGCAATGCCAGGCGGAAGCCAAGTGCCCGAAGCTGCTG
 CCTTGTCTGCACACGCTGTGCTCAGGATGCCTGGAGGCGTCGGGCATGCAGTGCCCATCTGCCAGGCGC
 CCTGGCCCTAGGTGCAGACACCCGCCCTGGATAACGTCTTTTTCGAGAGTCTGCAGCGGCGCTGTC
 GGTGTACCGGCAGATTGTGGATGCGCAGGCTGTGTGCACCCGCTGCAAAGAGTCGGCCGACTTCTGGTGC
 TTTGAGTGCAGCAGCTCCTCTGCGCAAGTGCTTCGAGGCACACCAGTGGTTCTCAAGCACGAGGCC
 GGCCCTAGCAGAGCTGCACAACAGTCGGTGCCTGAGTTCCTGGACGGCACCCGAAGACCAACAACAT
 CTTCTGCTCCAACCCCAACCACCGACCCCTACGCTGACCAGCATCTACTGCCGAGGATGTTCCAAGCCG
 CTGTGCTGCTCGTGCGCGCTCCTTGACAGCAGCCACAGTGAGCTCAAGTGCAGACATCAGCGCAGAGATCC
 AGCAGCGACAGGAGGAGCTGGACGCCATGACGCAGGCGCTGCAGGAGCAGGATAGTGCTTTGGCGCGGT
 TCACGCGCAGATGCACGCGGCCGTGGCCAGCTGGGCCGCGCGCTGCCGAGACCGAGGAGCTGATCCGC
 GAGCGCGTGCAGCAGGTGGTAGCTCACGTGCGGGCTCAGGAGCGCGAGCTGCTGGAGGCTGTGGACGCGC
 GGTACCAGCGGACTACGAGGAGATGGCCAGTCGGCTGGGCCCGCTGGATGCTGTGCTGCAGCGCATCCG
 CACGGGACGCGCGCTGGTGCAGAGGATGAAGTGTACGCTCGGACCAGGAGGCTGGACATGCACGCT
 TTCCTGCGCCAGGCGCTCTGCCGCTGCGCCAGGAGGAGCCAGAGCCTGCAAGCTGCCGTGCGCACCG
 ATGGCTTCGACGAGTTCAAGGTGCGCTGCAGGACCTCAGCTCTTGATCACCCAGGGGAAGATGCAGC
 TGTATCCAAGAAAGCCAGCCAGAGGCTGCCAGCACTCCAGGGACCCTATTGACGTTGACCTGCCCGAG
 GAGGCAGAGAGAGTGAAGGCCAGGTTACAGGCCCTGGGGCTGGCTGAAGCCAGCCTATGGCTGTGGTAC
 AGTCAGTGCCCGGGCACACCCCGTCCAGTGTACGCCTTCTCCATCAAAGGCCCTTCTATGGAGAGGA
 TGTCTCCAATAACAACGACAGCCAGAAGAGGAAGTGCAGCCAGACCCAGTGCCCGAGGAAGGTATCAAG
 ATGGAGTCTGAGGAGGGGAAGGAGGCAAGGTTGGCTCGGAGCTCCCGGAGCAGCCAGGCCAGCACCT
 CCAAGGCAGTCTACACCCACCTGGATGGACCGCTAGCCCCAGGAGCCCGTCATAGGAAGTGAGGT
 CTTCTGCCAACAGCAACCACGTGGCCAGTGGCGCCGGGAGGCAGAGGAACCGTGTGGTGATCAGC
 AGCTCGGAAGACTCAGATGCCGAAAACCTGTCCTCCCGAGAGCTGGATGACAGCAGCAGTGAAGTCCAGTG
 ACCTCCAGCTGGAAGGCCCCAGCACCCCTCAGGGTCTGGACGAGAACCTTGTGACCCCAAGCAGAAGA
 CAGACCTCTGGTTTTCTTGACCTCAAGATTGACAATGAAAGTGGGTTCTCTGGGGCTACCCCAACCC
 TTTCTAATT

AG**CGGACCG**ACGCGTACGCGGCCGCTCGAGCAGAACTCATCTCAGAAGAGGATCTGGCAGCAAATGATATCC
 TGGATTACAAGGATGACGACGATAAGGTTAA

Protein Sequence: >RC214606 representing NM_002675
Red=Cloning site Green=Tags(s)

```
MEPAPARSPRPQQDPARPQEPTMPPPETPSEGRQPSPPSPSPTERAPASEEEFQFLRCQCCQAEAKCPKLL
PCLHTLCSGCLASGMQCPCICQAPWPLGADTPALDNVVFESLQRRLSVYRQIVDAQVCTRCKESADFWC
FECEQLLCAKCFEAHQWFLKHEARPLAELRNQSVREFLDGTRKTNNIFCSNPNHRTPTLTSIYCRGCSKP
LCCSCALLDSSHSELKCDISAEIQQRQEELDAMTQALQEQDSAFGAVHAQMHAAVGQLGRARAETEELIR
ERVVRQVVAVHRAQERELLEAVDARYQRDYEEEMASRLGRLDAVLQRIRTGSALVQRMKCYASDQEVLDMHG
FLRQALCRLRQEEPQSLQAAVRTDGFDEFKVRQLDLSSCITQGGKDAVSKKASPEAASTPRDPIDVDLPE
EAERVKAQVQALGLAEAQPMVAVQSVGAHPVVPVYAFSIKGPSYGEDVSNNTTTAQKRKCSQTQCPKRVIK
MESEEGKEARLARSSPEQPRPSTSKAVSPPHLDGPPSPRPVIGSEVFLPNSNHVASGAGEAEERVVVIS
SSESDAENSSESRELDSSSESSDLQLEGPSTLRVLDENLADPQAEDRPLVFFDLKIDNESGFSWGYPHP
FLI
```

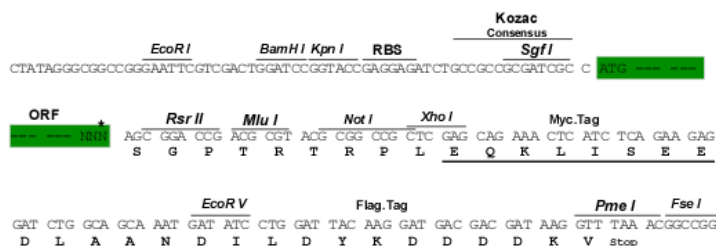
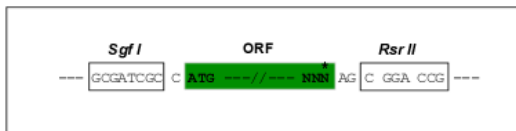
SGP TRRRLEQKLI SEEDLAANDILDYKDDDDKV

Chromatograms: https://cdn.origene.com/chromatograms/mk8070_f08.zip

Restriction Sites: SgfI-RsrII

Cloning Scheme:

Cloning sites used for ORF Shuttling:



ACCN: NM_002675

ORF Size: 1899 bp

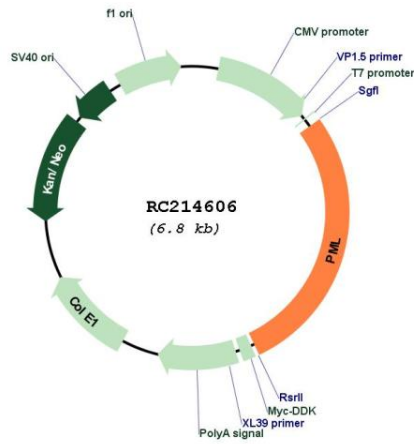
OTI Disclaimer: The molecular sequence of this clone aligns with the gene accession number as a point of reference only. However, individual transcript sequences of the same gene can differ through naturally occurring variations (e.g. polymorphisms), each with its own valid existence. This clone is substantially in agreement with the reference, but a complete review of all prevailing variants is recommended prior to use. [More info](#)

OTI Annotation: This clone was engineered to express the complete ORF with an expression tag. Expression varies depending on the nature of the gene.

Components: The ORF clone is ion-exchange column purified and shipped in a 2D barcoded Matrix tube containing 10ug of transfection-ready, dried plasmid DNA (reconstitute with 100 ul of water).

Reconstitution Method:	<ol style="list-style-type: none">1. Centrifuge at 5,000xg for 5min.2. Carefully open the tube and add 100ul of sterile water to dissolve the DNA.3. Close the tube and incubate for 10 minutes at room temperature.4. Briefly vortex the tube and then do a quick spin (less than 5000xg) to concentrate the liquid at the bottom.5. Store the suspended plasmid at -20°C. The DNA is stable for at least one year from date of shipping when stored at -20°C.
RefSeq:	NM_002675.3 , NP_002666.1
RefSeq Size:	2254 bp
RefSeq ORF:	1902 bp
Locus ID:	5371
UniProt ID:	P29590
Cytogenetics:	15q24.1
Protein Families:	Druggable Genome, Transcription Factors
Protein Pathways:	Acute myeloid leukemia, Pathways in cancer, Ubiquitin mediated proteolysis
MW:	69.8 kDa
Gene Summary:	<p>The protein encoded by this gene is a member of the tripartite motif (TRIM) family. The TRIM motif includes three zinc-binding domains, a RING, a B-box type 1 and a B-box type 2, and a coiled-coil region. This phosphoprotein localizes to nuclear bodies where it functions as a transcription factor and tumor suppressor. Its expression is cell-cycle related and it regulates the p53 response to oncogenic signals. The gene is often involved in the translocation with the retinoic acid receptor alpha gene associated with acute promyelocytic leukemia (APL). Extensive alternative splicing of this gene results in several variations of the protein's central and C-terminal regions; all variants encode the same N-terminus. Alternatively spliced transcript variants encoding different isoforms have been identified. [provided by RefSeq, Jul 2008]</p>

Product images:



Circular map for RC214606