

## Product datasheet for RC214592

### KIBRA (WWC1) (NM\_015238) Human Tagged ORF Clone

#### Product data:

|                           |   |
|---------------------------|---|
| Product Type:             | Expression Plasmids   |
| Product Name:             | KIBRA (WWC1) (NM_015238) Human Tagged ORF Clone                             |
| Tag:                      | Myc-DDK   |
| Symbol:                   | KIBRA   |
| Synonyms:                 | HBEBP3; HBEBP36; KIBRA; MEMRYQTL; PPP1R168                                  |
| Mammalian Cell Selection: | Neomycin  |
| Vector:                   | pCMV6-Entry (PS100001)  |
| E. coli Selection:        | Kanamycin (25 ug/mL)  |
| ORF Nucleotide Sequence:  | >RC214592 representing NM_015238<br>Red=Cloning site Blue=ORF Green=Tags(s) |

TTTTGTAATACGACTCACTATAGGGCGGCCGGAATTCGTCGACTGGATCCGGTACCGAGGAGATCTGCC  
GCC**CGATCGCC**

ATGCCCGCGCGGAGCTGCCCTGCCGGAGGGCTGGGAGGAGGCGCGGACTTCGACGGCAAGGTCTACT  
ACATAGACCACACGAACCGCACCACCAGCTGGATCGACCCGCGGGACAGGTACACCAAACCGCTCACCTT  
TGCTGACTGCATTAGTGATGAGTTGCCGCTAGGATGGGAAGAGGCATATGACCCACAGGTTGGAGATTAC  
TTCATAGACCACAACACAAAACCACTCAGATTGAGGATCCTCGAGTACAATGGCGGCGGGAGCAGGAAC  
ATATGCTGAAGGATTACCTGGTGGTGGCCAGGAGGCTCTGAGTGCACAAAAGGAGATCTACCAGGTGAA  
GCAGCAGCGCCTGGAGCTTGACAGCAGGAGTACCAGCAACTGCATGCCGTCTGGGAGCATAAGCTGGGC  
TCCAGGTCAGCTTGGTCTCTGGTTCATCATCCAGCTCCAAGTATGACCCGTGAGATCCTGAAAGTGAAA  
TTGCCACTGCAAAATCCCGGGTCAACAAGCTGAAGAGAGAGATGGTTCACCTCCAGCAGGAGCTGCAGTT  
CAAAGAGCGTGGCTTTCAGACCCGTAAGAAAAATCGATAAGAAAAATGTCTGATGCTCAGGGCAGCTACAAA  
CTGGATGAAGCTCAGGCTGTCTTGAGAGAAAACAAAAGCCATCAAAAAGGCTATTACCTGTGGGAAAAAGG  
AAAAGCAAGATCTCATTAAAGAGCCTTGCCATGTTGAAGGACGGCTTCCGCACTGACAGGGGGTCTCACTC  
AGACCTGTGGTCCAGCAGCAGCTCTCTGGAGAGTTCGAGTTTCCGCTACCGAAACAGTACCTGGATGTG  
AGCTCCCAGACAGACATCTCGGAAGCTTCGGCATCAACAGCAACAATCAGTTGGCAGAGAAGGTCAGAT  
TGCGCCTTCGATATGAAGAGGCTAAGAGAAGGATCGCCAACCTGAAGATCCAGCTGGCCAAGCTTGACAG  
TGAGGCCTGGCCTGGGGTCTGACTCAGAGAGGACCGGCTGATCCTTATCAACGAGAAGGAGGAGCTG  
CTGAAGGAGATGCGCTTCATCAGCCCCGCAAGTGGACCCAGGGGAGGTGGAGCAGCTGGAGATGGCCC  
GGAAGCGGCTGGAAAAGGACCTGCAGGCAGCCCGGACACCCAGAGCAAGGCGCTGACGGAGAGGTTAAA  
GTTAAACAGTAAGAGGAACAGCTTGTGAGAGAACTGGAGGAAGCCACCCGGCAGGTGGCAACTCTGCAC  
TCCAGCTGAAAAGTCTCTCAAGCAGCATGCAGTCCCTGTCTCAGGCAGCAGCCCGGATCCCTCAGT  
CCAGCCGGGGCTCCCTGGTTGCATCCAGCTGGACTCCTCCACTCAGCCAGCTTCACTGACCTCTACTA  
TGACCCCTTTGAGCAGCTGGACTCAGAGCTGCAGAGCAAGGTGGAGTTCTCTGCTCTGGAGGGGCCACC



[View online »](#)

```

GGCTTCCGGCCCTCGGGCTGCATCACCACCATCCACGAGGATGAGGTGGCCAAGACCCAGAAGGCAGAGG
GAGGTGGCCCGCTGCAGGCTCTGCGTTCCTGTCTGGCACCCAAAGTCCATGACCTCCCTATCCCCACG
TTCTCTCTCTCCTCCCCCTCCCCACCCTGTTCCCTCTCATGGCTGACCCCTCCTGGCTGGTGATGCC
TTCTCAACTCCTGGAGTTTGAAGACCCGGAGCTGAGTGCCACTCTTTGTGAAGTGAAGCTTGGTAACA
GCGCCAGGAAAGATACCGGCTGGAGGAACAGGAACGGAGGGCAAGCAGCTGGGCAAGCTGTGAATAC
GGCCCAGGGGTGTGCCCTGAAAGTGGCCTGTGTCTCAGCCGCCGTATCGGACGAGTACAGTGGCTGGAGC
AGTGGTGTGTACGAGGCTCCGTGCAGAGACTGGGTGCTTCAGAAGCTGCTGCATTTGACGTGACGAAT
CGGAAGCAGTGGGTGCGACCCGAATTCAGATTGCCCTGAAGTATGATGAGAAGAATAAGCAATTTGCAAT
ATTAATCATCCAGCTGAGTAACCTTTCTGCTCTGTTGCAGCAACAAGACCAGAAAGTGAATATCCGCGTG
GCTGTCCTTCTGCTCTGAAAGCACAACCTGCCTGTTCCGGACCCGGCCTCTGGACGCCTCAGACACTC
TAGTGTCAATGAGGTGTTCTGGGTATCCATGTCTATCCAGCCCTTACCAGAAGACCTTAAGAGTCGA
TGTCTGTACCACCGACAGGAGCCATCTGGAAGAGTGCCTGGGAGGCGCCAGATCAGCCTGGCGGAGGTC
TGCCGGTCTGGGAGAGGTGACCTCGCTGGTACAACCTTCTCAGTACAAATACTGAAGAAGCAGAGCA
GGGAGCTCAAGCCAGTGGGAGTTATGGCCCTGCCTCAGGGCCTGCCAGCACGGACGCTGTGTCTGCTCT
GTTGGAACAGACAGCAGTGGAGCTGGAGAAGAGGCAGGAGGCAGGAGCAGCACACAGACTGGAAGAC
AGCTGGAGGTATGAGGAGACCAGTGAGAATGAGGCAAGTCCGAGGAAGAGGAGGAGGAGGTGGAGGAGG
AGGGAGAAGAGGATGTTTTACCCGAGAAAGCCTCACCTGATATGGATGGGTACCCAGCATTAAAGGTGGA
CAAAGAGACCAACACGGAGACCCCGGCCCATCCCCACAGTGGTGCACCTAAGGACCGGAGAGTGGGC
ACCCCGTCCCAGGGGCCATTTCTTCGAGGGAGCACCATCATCCGCTCTAAGACCTTCTCCCAGGACCCC
AGAGCCAGTACGTGTGCCGGTGAATCGGAGTGATAGTGACAGCTCCACTCTGTCCAAAAAGCCACCTTT
TGTTCAAACCTCCTGGAGCGACGACGCTCCGGATGAAGCGCCTTCTCGGTCAAGTCGCTGCGCTCC
GAGCGTCTGATCCGTACCTCGCTGGACCTGGAGTTAGACCTGCAGGCGACAAGAAGCTGGCACAGCCAAT
TGACCCAGGAGATCTCGGTGCTGAAGGAGCTCAAGGAGCAGCTGGAACAAGCCAAGAGCCACGGGAGAA
GGAGTCCACAGTGGTTGCGTGAGGACGAGCGTTTCCGCTGCTGCTGAGGATGCTGGAGAAGCGGATG
GACCGAGCGGAGCACAAGGGTGAGCTTACAGACAGACAAGATGATGAGGGCAGCTGCCAAGGATGTGACA
GGCTCCGAGGCCAGAGCTGTAAGGAACCCCAAGTTTCACTTTTCCAGGGAGAAGATGGCATTTCAC
CCGGCCTCGGATGAATATCCAGCTCTCTGCAGATGACGTC

```

ACGCGTACGCGGCCGCTCGAGCAGAACTCATCTCAGAAGAGGATCTGGCAGCAATGATATCCTGGATT  
ACAAGGATGACGACGATAAGGTTTAA

**Protein Sequence:**

>RC214592 representing NM\_015238  
Red=Cloning site Green=Tags(s)

```

MPRPELPLPEGWEEARDFDGKVVYIDHTNRTTSWIDPRDRYTKPLTFADCSDELPLGWEEAYDPQVDY
FIDHNTKTTQIEDPRVQWRREQEHMLKDYLVVAQEALSAQKEIYQVQQRLELAQQEYQLHAVWEHKLK
SQVSLVSGSSSSSKYDPEILKAEIATAKSRVNKLRKREMHVHLQHELQFKERGFQTLKKIDKKMSDAQSYK
LDEAQAVALRETKAIKKAITCGEKEKQDLIKSLAMLKDFRTRDRGSHSDLWSSSSLESSEFFLPKQYLDV
SSQTDISGSFGINSNNQLAEKVRLRLRYEEAKRRIANLKIQLAKLDSEAWPGVLDSEDRDLILINEKEEL
LKEMRFISPRKWTQGEVEQLEMARKRLEKDLQAARDTQSKALTERLKLNSKRNLVRELEATRQVATLH
SQLKLSLSSMQSLSSGSSPGLTSSRGLVASSLDSSTASFTDLYDPFEQLDSELQSKVEFLLLEGAT
GFRPSGCIITIHEDVAKTQKAEGGRLQALRSLSGTPKSMSTLSPRSSLSSPSPCSPLMADPLLAGDA
FLNSLEFEDPELSATLCELNLGNSAQERYRLEPGTEGKQLGQAVNTAQCGCLKVACVSAVSDSEVAGD
SGVYEASVQRLGASEAAAFDSESEAVGATRIQIALKYDEKNKQFAILIQLSNL SALLQQDQKVNIRV
AVLPCSESTTCLFRTRPLDASDTLVFNVEFWVMSYPALHQKTLRVDVCTTDRSHLEELGGAQISLAEV
CRSGERSTRWYNLLSYKYLKKQSRLEKPVGMASGPASTDAVSALLEQTAVELEKRQGRSSTQTLLED
SWRYEETSENEAVAEVEVEVEVEVEVEVEVEVEVEVEVEVEVEVEVEVEVEVEVEVEVEVEVEVEVE
TPSQGPFRLRGSTIIRSKTFSPGQSQYVCRNLNRSDSDSSTLSKPPFVRNLSLERRSVRMKRPSSVKSLS
ERLIRTSLDLELDLQATRTWHSQLTQEISVLKELKEQLEQAKSHGEKELPQWLREDERFRLLLRMLEKRM
DRAEHKQELQTDKMMRAAKDVHRLRGQSCKEPPEVQSFREKMAFFTRPRMNIPALSADDY

```

TRTRPLEQKLISEEDLAANDILDYKDDDDKV

Chromatograms: [https://cdn.origene.com/chromatograms/mk6255\\_f07.zip](https://cdn.origene.com/chromatograms/mk6255_f07.zip)

Restriction Sites: SgfI-MluI

Cloning Scheme:



ACCN: NM\_015238

ORF Size: 3333 bp

OTI Disclaimer: The molecular sequence of this clone aligns with the gene accession number as a point of reference only. However, individual transcript sequences of the same gene can differ through naturally occurring variations (e.g. polymorphisms), each with its own valid existence. This clone is substantially in agreement with the reference, but a complete review of all prevailing variants is recommended prior to use. [More info](#)

OTI Annotation: This clone was engineered to express the complete ORF with an expression tag. Expression varies depending on the nature of the gene.

Components: The ORF clone is ion-exchange column purified and shipped in a 2D barcoded Matrix tube containing 10ug of transfection-ready, dried plasmid DNA (reconstitute with 100 ul of water).

- Reconstitution Method:
1. Centrifuge at 5,000xg for 5min.
  2. Carefully open the tube and add 100ul of sterile water to dissolve the DNA.
  3. Close the tube and incubate for 10 minutes at room temperature.
  4. Briefly vortex the tube and then do a quick spin (less than 5000xg) to concentrate the liquid at the bottom.
  5. Store the suspended plasmid at -20°C. The DNA is stable for at least one year from date of shipping when stored at -20°C.

RefSeq: [NM\\_015238.3](#)

RefSeq Size: 4171 bp

RefSeq ORF: 3342 bp

Locus ID: 23286

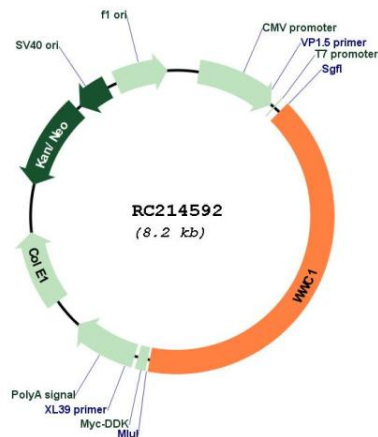
UniProt ID: [Q8IX03](#)

Cytogenetics: 5q34

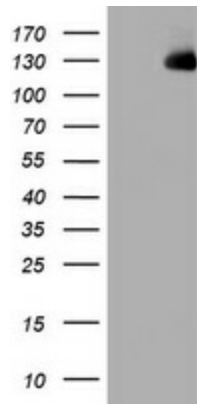
MW: 125.1 kDa

Gene Summary: The protein encoded by this gene is a cytoplasmic phosphoprotein that interacts with PRKC-zeta and dynein light chain-1. Alleles of this gene have been found that enhance memory in some individuals. Three transcript variants encoding different isoforms have been found for this gene. [provided by RefSeq, Mar 2010]

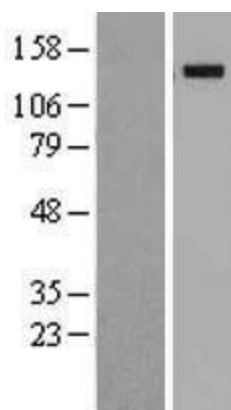
### Product images:



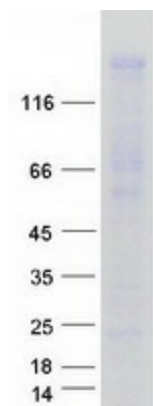
Circular map for RC214592



HEK293T cells were transfected with the pCMV6-ENTRY control (Cat# [PS100001], Left lane) or pCMV6-ENTRY WWC1 (Cat# RC214592, Right lane) cDNA for 48 hrs and lysed. Equivalent amounts of cell lysates (5 ug per lane) were separated by SDS-PAGE and immunoblotted with anti-WWC1 (Cat# [TA801568]). Positive lysates [LY414708] (100ug) and [LC414708] (20ug) can be purchased separately from OriGene.



Western blot validation of overexpression lysate (Cat# [LY414708]) using anti-DDK antibody (Cat# [TA50011-100]). Left: Cell lysates from untransfected HEK293T cells; Right: Cell lysates from HEK293T cells transfected with RC214592 using transfection reagent MegaTran 2.0 (Cat# [TT210002]).



Coomassie blue staining of purified WWC1 protein (Cat# [TP314592]). The protein was produced from HEK293T cells transfected with WWC1 cDNA clone (Cat# RC214592) using MegaTran 2.0 (Cat# [TT210002]).