

## Product datasheet for **RC214587**

### CT47A9 (NM\_001080138) Human Tagged ORF Clone

#### Product data:

Product Type:	Expression Plasmids
Product Name:	CT47A9 (NM_001080138) Human Tagged ORF Clone
Tag:	Myc-DDK
Symbol:	CT47A9
Synonyms:	CT47.9
Mammalian Cell Selection:	Neomycin
Vector:	pCMV6-Entry (PS100001)
E. coli Selection:	Kanamycin (25 ug/mL)
ORF Nucleotide Sequence:	>RC214587 representing NM_001080138 Red=Cloning site Blue=ORF Green=Tags(s)

TTTGTGAATACGACTCACTATAGGGCGGCCGGAATTCGTCGACTGGATCCGGTACCGAGGAGATCTGCC  
GCC**CGATCGC**C

ATGTCTGCCACAGGGGACCGACACCCGACCCAAGGGGACCAGGAGGCCCGGTAAAGCCAGGAGGGAGCAC  
AGGCCGAGGCGGCCGAGCTGGTAACCAGGAGGGCGCGACTCCGGCCCCGACAGCAGCGACGTGGTGCC  
TGCGGCCGAGGTGGTCGGAGTCGACGGGCCCGTGAAGGCCTCGGGAGGAGGAGGGTGAGCAGGCGGCA  
GGCCTGGCCGAGTCCCCGGGGCGGGAGCGCCGAGGAGGACTCAGATATCGGGCCCGCAGCGAGGAAG  
AGGAGGAGGAAGAGGGGAACGAGGCGGCCAACTTCGACTTGGCGGTGGTCGCCCGTCGCTACCCGGCGTC  
GGGCAATCACTTCGTGCTCCTGGACATGGTCCACTCCCTTCTCCACCGCCTCTCTACAACGACCACATC  
CTCATAGAGAACCGTCAACTCAGCCGCCTGATGGTGGGGCCACACGCTGCTGCGCGCAACCCCTGGGGCA  
ACCTCCCCCGCTGCTGCTGCCCCAGAGGCTGGGTGCAGGGGCCGAGCCCGGGCGGGCAGGGGCCTGGG  
CCTGATCCAGGAGGCCGATCGGTCCCAGAGCCTGCAGTGCCAGCTGACCTGGCCGAGATGGCCAGGGAG  
CCCGCGGAGGAGGCCGACAGGAGAAGCTCTCAGAGGAGGCCACAGAGGAACGAGCGCAGAGGAACCGG  
CCACAGAAGAACCGACCGCACAGGAGGCCACGGCCCCAGAGGAAGTCACTAAATCTCAGCCCCGAAAGTG  
GGATGAAGAGGCCCAAGATGCTGCAGGCGAGGAAGAGAAAACAAGAAAAAGAGAAGGATGCGGAAAAC  
AAGGTGAAGAACTCCAAGGGACC

**ACGCGT**ACGCGGCCGCTCGAGCAGAACTCATCTCAGAAGAGGATCTGGCAGCAAATGATATCCTGGATT  
ACAAGGATGACGACGATAAGGTTTAA



[View online »](#)

**Protein Sequence:** >RC214587 representing NM\_001080138  
 Red=Cloning site Green=Tags(s)

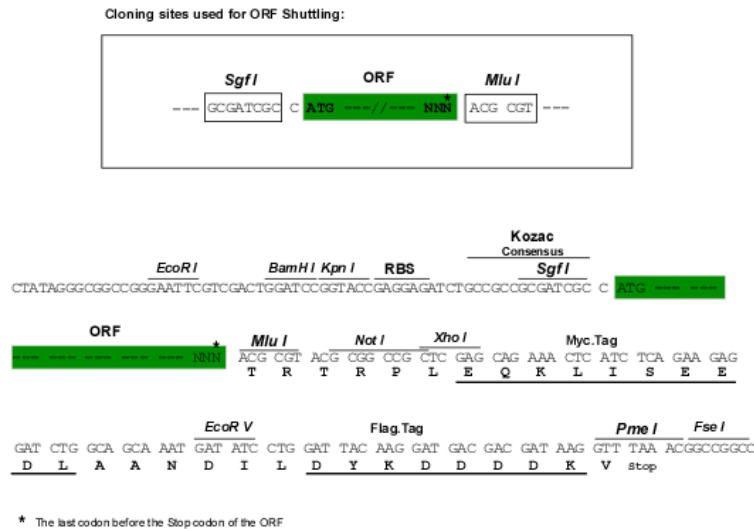
MSATGDRHPTQGDQEAPVSQEGAQAEAAGAGNQEGGDSGPDSSDVVPAAEVVGVAGPVEGLGEEEGEQAA  
 GLAAVPRGGSAAEDSDIGPATEEEEEEGNEAANFDLAVVARRYPASGIHFVLLDMVHSLHRLSHNDHI  
 LIENRQLSRLMVGPHAAARNPWGNLPPLLLPQRLGAGAAARAGEGLGLIQEAASVPEPAVPADLAEMARE  
 PAEEAAEEKLSEEATEEPDAEEPATEEPTAQEATAPEEVTKSQPEKWDEEAQDAAGEEEEEKEKEKDAEN  
 KVKNSKGT

TRTRPLEQKLISEEDLAANDILDYKDDDDKV

**Chromatograms:** [https://cdn.origene.com/chromatograms/ja1484\\_g11.zip](https://cdn.origene.com/chromatograms/ja1484_g11.zip)

**Restriction Sites:** SgfI-MluI

**Cloning Scheme:**



**ACCN:** NM\_001080138

**ORF Size:** 864 bp

**OTI Disclaimer:** The molecular sequence of this clone aligns with the gene accession number as a point of reference only. However, individual transcript sequences of the same gene can differ through naturally occurring variations (e.g. polymorphisms), each with its own valid existence. This clone is substantially in agreement with the reference, but a complete review of all prevailing variants is recommended prior to use. [More info](#)

**OTI Annotation:** This clone was engineered to express the complete ORF with an expression tag. Expression varies depending on the nature of the gene.

**Components:** The ORF clone is ion-exchange column purified and shipped in a 2D barcoded Matrix tube containing 10ug of transfection-ready, dried plasmid DNA (reconstitute with 100 ul of water).

**Reconstitution Method:**

1. Centrifuge at 5,000xg for 5min.
2. Carefully open the tube and add 100ul of sterile water to dissolve the DNA.
3. Close the tube and incubate for 10 minutes at room temperature.
4. Briefly vortex the tube and then do a quick spin (less than 5000xg) to concentrate the liquid at the bottom.
5. Store the suspended plasmid at -20°C. The DNA is stable for at least one year from date of shipping when stored at -20°C.

**Note:** Plasmids are not sterile. For experiments where strict sterility is required, filtration with 0.22um filter is required.

**RefSeq:** [NM\\_001080138.1](#), [NP\\_001073607.1](#)

**RefSeq Size:** 1294 bp

**RefSeq ORF:** 867 bp

**Locus ID:** 728042

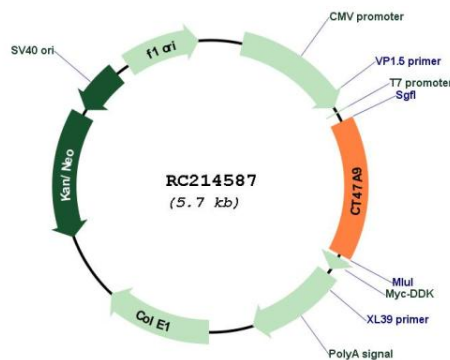
**UniProt ID:** [Q5JQC4](#)

**Cytogenetics:** Xq24

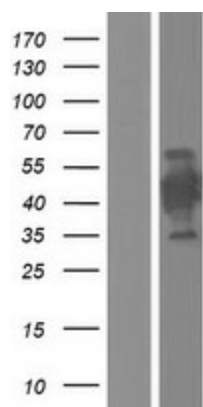
**MW:** 29.9 kDa

**Gene Summary:** This locus represents a member of the cancer/testis gene family 47. This family, also known as CT47, is comprised of 13 nearly identical loci clustered at Xq24. [provided by RefSeq, Sep 2010]

## Product images:



Circular map for RC214587



Western blot validation of overexpression lysate (Cat# [LY421594]) using anti-DDK antibody (Cat# [TA50011-100]). Left: Cell lysates from untransfected HEK293T cells; Right: Cell lysates from HEK293T cells transfected with RC214587 using transfection reagent MegaTran 2.0 (Cat# [TT210002]).