

Product datasheet for RC214585

Archaemetzincin 2 (AMZ2) (NM_001033572) Human Tagged ORF Clone

Product data:

Product Type:	Expression Plasmids
Product Name:	Archaemetzincin 2 (AMZ2) (NM_001033572) Human Tagged ORF Clone
Tag:	Myc-DDK
Symbol:	Archaemetzincin 2
Mammalian Cell Selection:	Neomycin
Vector:	pCMV6-Entry (PS100001)
E. coli Selection:	Kanamycin (25 ug/mL)
ORF Nucleotide Sequence:	>RC214585 ORF sequence Red=Cloning site Blue=ORF Green=Tags(s)

TTTTGTAATACGACTCACTATAGGGCGGCCGGAATTCGTCGACTGGATCCGGTACCGAGGAGATCTGCC
GCC**CGATCGCC**

ATGCAAAATACGGCACTCCGAACAGACACTAAAAACAGCTCTCATCTCAAAGAACCCAGTGCTTGTAT
CACAGTATGAGAAATTAGATGCTGGGGAACAACGTTTAAATGAATGAAGCCTTCCAGCCAGCCAGTGATCT
CTTTGGACCCATTACCTTGCACTTCCATCAGATTGGATCACCTCCCACCTGAGGCTCCCCAAGACTTT
GAACAGTCTTTCAGTGATCCTTACAGAAAGACACCCTCTCCAAACAAACGCAGCATTATATACAGTCCA
TTGGCTCTTAGGAAACACCAGAATTATCAGTGAAGAATATATTAATGGCTCACGGCTACTGTAAGC
ATATTTCTATGGCTTGAGAGTAAAACCTCTAGAACCAGTTCCTGTTTCTGTAACAAGATGTTCTTTAGA
GTCAATGAGAACACACAACTACAAATTCATGCAGGGGACATCCTGAAGTTCTTGAAAAAGAAGAAAC
CTGAAGATGCCTTCTGTGTTGTGGGAATAACAATGATTGATCTTTACCCAAGAGACTCGTGGAAATTTGT
CTTTGGACAGGCCTCTTTGACAGATGGTGTGGGATATTCAGCTTTGCCAGGTATGGCAGTGATTTTTAT
AGCATGCACTATAAAGGCAAAGTGAAGAAGCTCAAGAAAACATCTTCAAGTGACTATTCAATTTTCGACA
ACTATTATTTCCAGAAATAACTAGTGTTTTACTACTTCGATCCTGTAAGACTTTAACCCATGAGATCGG
ACACATATTTGGACTGCGACACTGCCAGTGGCTTGCATGCCTCATGCAAGGCTCCAACCACTTGGAAAGAA
GCTGACCGGCCCTCTAAACCTTTGCCCTATCTGTTTGCACAAGTTGCAGTGTGCTGTTGGCTTCAGCA
TTGTAGAAAGATACAAAGCACTGGTGGATTGATGATGAATCTTCTGACACACCTGGAGCACTCC
AGAACACAGTCACGAGGATAATGGGAATTTACCGAAACCCGTGGAAGCCTTTAAGGAATGAAAAGAGTGG
ATAATAAAATGCCTGGCAGTTCTCCAAAAA

ACGCGTACGCGGCCGCTCGAGCAGAAACTCATCTCAGAAGAGGATCTGGCAGCAAATGATATCCTGGATT
ACAAGGATGACGACGATAAGGTTTAA



[View online »](#)

Protein Sequence: >RC214585 protein sequence
Red=Cloning site Green=Tags(s)

MQIIRHSEQTLKLTALISKNPVLVSQYEKLDAGEQRLMNEAFQPASDLFGPITLHSPSDWITSHPEAPQDF
 EQFFSDPYRKTPSPNKRSIYIQSIGSLGNTRIISEEYIKWLTGYCKAYFYGLRVKLEPVPVSVTRCSFR
 VNENTHNLQIHAGDILKFLKKKPEDAFVVGITMIDL YPRDSWNFVFGQASLTDGVGIFSFARYGSDFY
 SMHYKGVKLLKKTSSSDYSIFDNYIPEITSVLLLRCKTLTHEIGHIFGLRHCQWLAACLMQGSNHL EE
 ADDRPLNLCPICLHKLQCAVGF SIVERYKALVRWIDDESSDTPGATPEHSHEDNGNLPKPV EAFKEWKEW
 IIKCLAVLQK

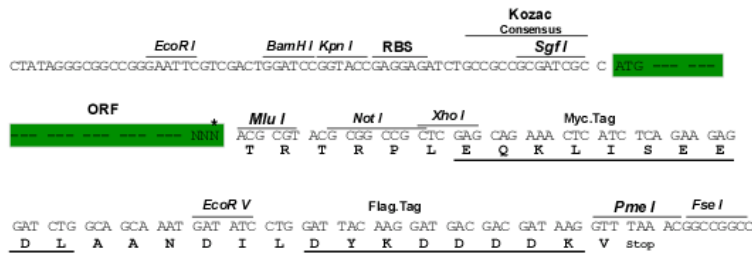
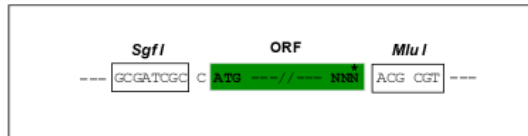
TRTRPLEQKLI SEEDLAANDILDYKDDDDKV

Chromatograms: https://cdn.origene.com/chromatograms/mk6550_d09.zip

Restriction Sites: Sgfl-MluI

Cloning Scheme:

Cloning sites used for ORF Shuttling:



* The last codon before the Stop codon of the ORF

ACCN: NM_001033572

ORF Size: 1080 bp

OTI Disclaimer: The molecular sequence of this clone aligns with the gene accession number as a point of reference only. However, individual transcript sequences of the same gene can differ through naturally occurring variations (e.g. polymorphisms), each with its own valid existence. This clone is substantially in agreement with the reference, but a complete review of all prevailing variants is recommended prior to use. [More info](#)

OTI Annotation: This clone was engineered to express the complete ORF with an expression tag. Expression varies depending on the nature of the gene.

Components: The ORF clone is ion-exchange column purified and shipped in a 2D barcoded Matrix tube containing 10ug of transfection-ready, dried plasmid DNA (reconstitute with 100 ul of water).

Reconstitution Method:

1. Centrifuge at 5,000xg for 5min.
2. Carefully open the tube and add 100ul of sterile water to dissolve the DNA.
3. Close the tube and incubate for 10 minutes at room temperature.
4. Briefly vortex the tube and then do a quick spin (less than 5000xg) to concentrate the liquid at the bottom.
5. Store the suspended plasmid at -20°C. The DNA is stable for at least one year from date of shipping when stored at -20°C.

RefSeq: [NM_001033572.1](#), [NP_001028744.1](#)

RefSeq Size: 1395 bp

RefSeq ORF: 1083 bp

Locus ID: 51321

UniProt ID: [Q86W34](#)

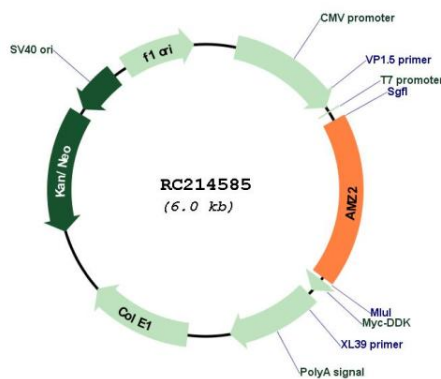
Cytogenetics: 17q24.2

Protein Families: Druggable Genome

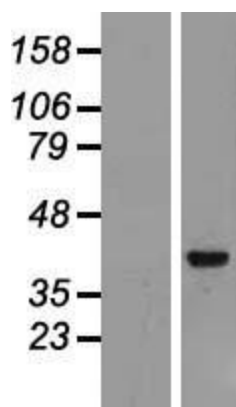
MW: 41.3 kDa

Gene Summary: The protein encoded by this gene is a zinc metalloprotease that displays some activity against angiotensin-3. The encoded protein is inhibited by the aminopeptidase inhibitor amastatin, as well as by the general inhibitors o-phenanthroline and batimastat. Defects in this gene may be associated with lung tumorigenesis. [provided by RefSeq, Oct 2016]

Product images:



Circular map for RC214585



Western blot validation of overexpression lysate (Cat# [LY422397]) using anti-DDK antibody (Cat# [TA50011-100]). Left: Cell lysates from untransfected HEK293T cells; Right: Cell lysates from HEK293T cells transfected with [RC215164] using transfection reagent MegaTran 2.0 (Cat# [TT210002]).