

## Product datasheet for **RC214584**

### WDR36 (NM\_139281) Human Tagged ORF Clone

#### Product data:

Product Type:	Expression Plasmids
Product Name:	WDR36 (NM_139281) Human Tagged ORF Clone
Tag:	Myc-DDK
Symbol:	WDR36
Synonyms:	GLC1G; TA-WDRP; TAWDRP; UTP21
Mammalian Cell Selection:	Neomycin
Vector:	pCMV6-Entry (PS100001)
E. coli Selection:	Kanamycin (25 ug/mL)



[View online »](#)

**ORF Nucleotide Sequence:**

>RC214584 ORF sequence  
 Red=Cloning site Blue=ORF Green=Tags(s)

TTTTGTAATACGACTCACTATAGGGCGGCCGGGAATTCGTCGACTGGATCCGGTACCGAGGAGATCTGCC  
 GCC**GCGATCGCC**

ATGTGTTGCACTGAGGGCAGTCTCCGAAACGCGATTTCGAGCGGGCCGGAAGCGGTGTGTGTCTGC  
 AGCTCTGGCAGAGGACTGTTCCACTAGACACGCTGAAGGGACTGGGTACGTGTTTTCCCTCAGGACCAGA  
 GCTGAGAGGAGCTGGGATCGCGCGGCAATGGAACGGGCCTCAGAAAGGCGCACGGCCAGCGCGCTTTTT  
 GCGGGGTTCCGGGCTTGGGACTTTTCAGCAACGACATCCACACGTGGTGCGGTTTCAGCGCGCTCAAGC  
 GCCGGTCTATGTAACAACCTGCGTGGGCAAGAGTTCCACACCTATGACGTTTCAGAAACTAGTCTGGT  
 TGCAGTAAGTAATTCTGTTCCACAGGATATCTGCTGTATGGCAGCTGATGGCAGATTAGTCTTTGCTGCT  
 TATGGAATGTTTTCTCTGCATTTGCCCGTAATAAAGAGATAGTACACCTTTAAGGGTCATAAGGCAG  
 AAATCCATTTCTGCAACCTTTGGAGACCACATTATCTCTGTTGATACTGATGGCATTCTATTATTTG  
 GCACATATATTCAGAAGAAGAATACCTGCAGTTGACTTTTGATAAATCAGTATTTAAAATTTCTGCAATT  
 TTGCATCCAAGTACCTACTTGAATAAAATCTTCTGGGCAGTGAACAAGGAAGCCTGCAGTTGTGGAATG  
 TAAAATCCAATAAACTTCTATATACATTTCCAGGATGGAAGTTGGAGTGACAGCTTTCAGCAGGCACC  
 AGCCGTGGATGTTGTTGCTATTGGTCTTATGTCAGGTCAAGTTATCATTACAACATTAATTTAATGAA  
 ACATTAATGAAGTTTCGTCAGACTGGGACCCATTACTTCAATTTTCATTTCGCACAGATGGTCATCCAG  
 TAATGGCAGCTGGAAGCCCATGTGGCCATATTGGACTCTGGGATCTAGAAGACAAAAAATTAATCAACCA  
 AATGAGAAATGCACACTACAGCAATTGCCGGACTGACATTTCTCCATAGAGAGCCACTTCTTGTGACA  
 AATGGCGCTGACAATGCTCTTAGGATATGGATATTTGATGGTCTACAGGTGAAGGCCGACTTTTGAGAT  
 TCAGAATGGGTCAATAGTCTCTTACCAATATCAGATATTATGGACAGAATGGACAGCAGATTCTAAG  
 TGCAAGTCAAGATGGAACCTTTCAGTCATTTTCCACGGTACATGAAAAATTCATAAAGAGCTTGGGACAT  
 GGATTAATAAAATAAAAGAGAGTTAAACGTAAAGGACTTCAGAATACCATGTCAGTGAGACTTCCACCCA  
 TCACAAAGTTTGCAGCAGAGGAAGCTCGTGAAGTGACTGGGATGGTATCATTGCTTGCCATCAAGGTAA  
 GCTATCTTGCTCAACCTGGAATTATCAGAAATCTACAATAGGCGCTTACTTTCTCAAGCCAAAAGAGTTG  
 AAGAAAGATGACATAACTGCAACAGCAGTGGATATAACTTCTTGTGAAACTTTGCTGTAATTGGCCTCT  
 CATCAGGAAGTGTAGATGTATATAACATGCAGTCTGGCATAACATCGAGGAAGTTTGGCAAGGATCAAGC  
 TCACAAGGATCTGTTAGAGGTGTCGAGTGGATGGATTAACCAGTTGACAGTTACAACGGTAGTGAA  
 GGATTACTCAAAATCTGGAACCTTAAAAACAAAATTTAATCCATTCTGTGAGCCTCAGTTCATCTCCAA  
 ATATCATGTTGCTACATAGGGACAGTGGCATTCTGGGACTCGCCTTGGATGACTTCTCCATTAGTGTCT  
 GGACATAGAACTAGGAAGATTGTCAGAGAGTTTTCTGGACACCAAGGCCAAATAAATGACATGGCTTTT  
 AGTCTGATGGTCTGGTTAATAAGTGCTGCGATGGATTGCTCTATTAGGACTTGGGACCTTCTTCTG  
 GGTGCCTTATAGACTGCTTTTTGTTGGACTCGGCTCCTCTCAATGTTTCTATGCTCCTACTGGAGACTT  
 TCTGGCAACTTCCCATGTGGACCACCTTGGAAATTAATCTATGGTCCAATATTTCCCTGTATTGAGTTGT  
 TCATTACGGCCACTTCTGCAGATTATGTCCTTCAATAGTGATGCTTCTGGTACTTGTCAAACCCAAG  
 ATGTAGAAGTATCAGAAGAAACAGTAGAACCAAGTGATGAATTGATAGAATATGATTCGCCAGAACAGTT  
 GAATGAGCAATTGGTGACTCTTTCACTTCTTCTGAATCAGATGGAAAAACCTTCTAACCTTGATGTT  
 ATTAAGAAAAAGAATAAACCAAAGGAACCAACCAAGTACCCAAATCAGCACCATTTTTCTTCCAAACA  
 TTCTGGCCTTGTACCCAGATATGCTGCACCTGAACAAAATAATGATCCCCAGCAGTCTAAAGTGGTAAA  
 TCTTGGAGTTTGGCTCAAAAATCAGATTTCTGCTTGAACCTTGAAGAAGGACTGGTAAATAAATAGTAT  
 GACTGCTCTCAACCTTCTGAAAGAAATCAGGCCATCAGGAATTGAAACAGAGCTGCGAAGCTTGTCTC  
 CTGATTGTGGTGGTCCATAGAAGTTATGCAGAGCTTCTTGAATGATTGGGATGATGCTGGACAGAAA  
 GCGTGATTTTGGTTAGCCAGGCATACCTTGCATTGTTTCTAAAGTTACACCTTAAAATGCTTCTTCA  
 GAGCCAGTACTCCTAGAAGAAATAACAAATTTGTCATCCAGGTGGAAGAAAACCTGGACCCATTTGCAAT  
 CACTCTCAATCAAAGCATGTGTATTTAAATTATCTCAAAAGTGCTTTGTTG

**ACGCGT**ACGCGGCCGCTCGAGCAGAAACTCATCTCAGAAGAGGATCTGGCAGCAAATGATATCCTGGATT  
 ACAAGGATGACGACGATAAGGTTTAA

Protein Sequence: >RC214584 protein sequence  
 Red=Cloning site Green=Tags(s)

```
MCCTEGSLRKRDSQRAPEAVLCLQLWQRTVPLDTLKGLGTCFSPGPELRGAGIAAMERASERTASALF
AGFRALGLFSNDIPHVVRFSAKRRRFYVTTCVGKSFHTYDVQKLSLVAVSNSVPQDICCMAADGRLVFAA
YGNVFSAFARNKEIVHTFKGHKAEIHFLQPFGDHIIISVDTDGILIIWHIYSEEEYLQLTFDKSVFKISAI
LHPSTYLNKILLGSEQSLQLWNVKS NKLLYTFPGWKVGVVTAQQAPAVDVVAIGLMSGQVVIHNIKFNE
TLMKFRQDWGPITISIFRTDGHVMAAGSPCGHIGLWLEDKKLINQMRNAHSTAIAGLTFHLHREPLLVT
NGADNALRIWIFDGPTEGGRLLRFRMGHSAPLTNIRYYGQNGQQILSASQDGTLSQSFSTVHEKFNKSLGH
GLINKRVRKRLQNTMSVRLPPI TKFAAEEARESDWDGIIACHQKLS CSTWNYQKSTIGAYFLPKPEL
KKDDITATAVDITSCGNFAVIGLSSGTVVYVMQSGIHRGSGFKDQAHKGSVRGVAVDGLNQLTVTTGSE
GLLKFWNFKNKILIHVSLS SSPNIMLLHRDSGILGLALDDFSISVLDIETR KIVREFSGHQGQINDMAF
SPDGRWLISAAMDCSIRTWDLPSGCLIDCFLLD SAPLNVSMSPTGDFLATSHVDHLGIYLSNISLYSVV
SLRPLPADYVPSIVMLPGTCQTQDVEVSEETVEPSDELIEYDSPEQLNEQLVTL SLLPESRWKNLLNLDV
IKKKNPKPEPKVPKSAPFFIPTIPGLVPRYA APEQNNDPQQSKVVNLGVLAQKSDFC LKLEEGLVNNKY
DTALNLLKESGPSGIETELRSLSPDCGGSEIVMQSFLKMTGMMLDRKRFELAQAYLALFLKLHLKMLPS
EPVLL EITNLSQVEENWTHLQSLFNQSMCILNLYKSALL
```

TRTRPLEQKLISEEDLAANDILDYKDDDDKV

Chromatograms: [https://cdn.origene.com/chromatograms/mk6471\\_f01.zip](https://cdn.origene.com/chromatograms/mk6471_f01.zip)

Restriction Sites: SgfI-MluI

Cloning Scheme:

Cloning sites used for ORF Shuttling:



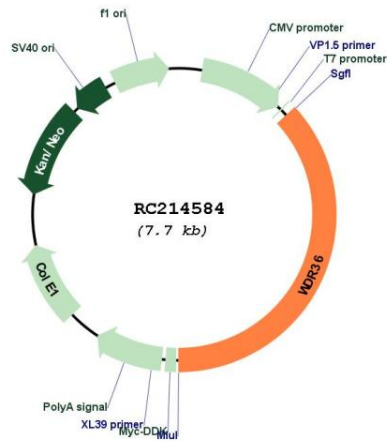
\* The last codon before the Stop codon of the ORF

ACCN: NM\_139281

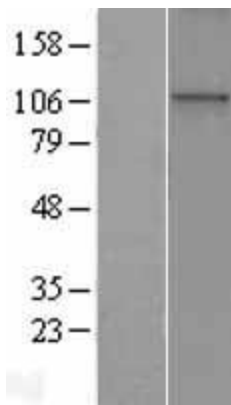
ORF Size: 2853 bp

<b>OTI Disclaimer:</b>	The molecular sequence of this clone aligns with the gene accession number as a point of reference only. However, individual transcript sequences of the same gene can differ through naturally occurring variations (e.g. polymorphisms), each with its own valid existence. This clone is substantially in agreement with the reference, but a complete review of all prevailing variants is recommended prior to use. <a href="#">More info</a>
<b>OTI Annotation:</b>	This clone was engineered to express the complete ORF with an expression tag. Expression varies depending on the nature of the gene.
<b>Components:</b>	The ORF clone is ion-exchange column purified and shipped in a 2D barcoded Matrix tube containing 10ug of transfection-ready, dried plasmid DNA (reconstitute with 100 ul of water).
<b>Reconstitution Method:</b>	<ol style="list-style-type: none"><li>1. Centrifuge at 5,000xg for 5min.</li><li>2. Carefully open the tube and add 100ul of sterile water to dissolve the DNA.</li><li>3. Close the tube and incubate for 10 minutes at room temperature.</li><li>4. Briefly vortex the tube and then do a quick spin (less than 5000xg) to concentrate the liquid at the bottom.</li><li>5. Store the suspended plasmid at -20°C. The DNA is stable for at least one year from date of shipping when stored at -20°C.</li></ol>
<b>RefSeq:</b>	<a href="#">NM_139281.2</a> , <a href="#">NP_644810.1</a>
<b>RefSeq Size:</b>	6611 bp
<b>RefSeq ORF:</b>	2688 bp
<b>Locus ID:</b>	134430
<b>UniProt ID:</b>	<a href="#">Q8NI36</a>
<b>Cytogenetics:</b>	5q22.1
<b>Domains:</b>	WD40, Utp21
<b>MW:</b>	105.3 kDa
<b>Gene Summary:</b>	This gene encodes a member of the WD repeat protein family. WD repeats are minimally conserved regions of approximately 40 amino acids typically bracketed by gly-his and trp-aspartic acid (GH-WD), which may facilitate formation of heterotrimeric or multiprotein complexes. Members of this family are involved in a variety of cellular processes, including cell cycle progression, signal transduction, apoptosis, and gene regulation. Mutations in this gene have been associated with adult-onset primary open-angle glaucoma (POAG). [provided by RefSeq, Jul 2008]

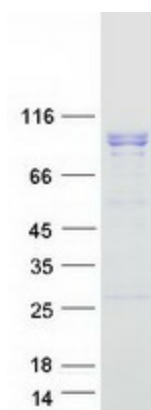
Product images:



Circular map for RC214584



Western blot validation of overexpression lysate (Cat# [LY408337]) using anti-DDK antibody (Cat# [TA50011-100]). Left: Cell lysates from untransfected HEK293T cells; Right: Cell lysates from HEK293T cells transfected with RC214584 using transfection reagent MegaTran 2.0 (Cat# [TT210002]).



Coomassie blue staining of purified WDR36 protein (Cat# [TP314584]). The protein was produced from HEK293T cells transfected with WDR36 cDNA clone (Cat# RC214584) using MegaTran 2.0 (Cat# [TT210002]).