

## Product datasheet for RC214575

### PPT2 (NM\_138717) Human Tagged ORF Clone

#### Product data:

Product Type:	Expression Plasmids
Product Name:	PPT2 (NM_138717) Human Tagged ORF Clone
Tag:	Myc-DDK
Symbol:	PPT2
Synonyms:	C6orf8; G14; PPT-2
Mammalian Cell Selection:	Neomycin
Vector:	pCMV6-Entry (PS100001)
E. coli Selection:	Kanamycin (25 ug/mL)
ORF Nucleotide Sequence:	>RC214575 representing NM_138717 Red=Cloning site Blue=ORF Green=Tags(s)

TTTTGTAATACGACTCACTATAGGGCGGCCGGAATTCGTCGACTGGATCCGGTACCGAGGAGATCTGCC  
GCC**CGATCGCC**

ATGAAGAGTTGCGGGAGCATGCTGGGGCTCTGCGGGCAGCGGCTCCCGCGGGTGGTCTGCTTCTGT  
TGCCTTTCCTGCCGCTGCTGCTGCTTGCAGCCCCGCGCCACCAGCGCTCCTACAAGCCGGTCATCGT  
GGTGCATGGGCTTTCGACAGCTCGTACAGCTCCGCCACCTGCTGGAATACATCAATGAGACACACCCC  
GGGACTGTGGTACAGTCTCGATCTCTCGATGGGAGAGAGCTTGCACCCCTGTGGAAACAGGTGC  
AAGGGTCCGAGAGGCTGTGGTCCCATCATGGCAAAGGCCCTCAAGGGGTGCATCTCATCTGCTACTC  
GCAGGGGGGCCTTGTGTGCCGGGCTCTGCTTTCGTGCATGGATGATCACAACTGGATTCTTTCATCTCC  
CTCTCCTCTCCACAGATGGGACAGTATGGAGACACGGACTACTTGAAGTGGCTGTCCCCACCTCCATGC  
GGTCTAACCTCTATCGGATCTGCTATAGCCCCTGGGGCCAGGAATTCCTCATCTGCAACTACTGGCATGA  
TCCCCACCACGATGACTTGTACCTCAATGCCAGCAGCTTCTGGCCCTGATCAATGGGAAAGAGACCAT  
CCCAATGCCACAGTATGGCGGAAGAACTTCTGCGTGTGGGCCACCTGGTGTGATTGGGGGCCCTGATG  
ATGGTGTATTACTCCCTGGCAGTCCAGCTTCTTTGGTTTCTATGATGCAAATGAGACCGTCTGGAGAT  
GGAGGAGCAACTGGTTTATCTGCGGGATTCTTTGGGTTGAAGACTCTATTGGCCGGGGGCCATAGTG  
AGGTGTCCAATGGCCGGTATCTCCACACAGCTGGCACTCCAACCGTACCCTTTATGAGACCTGCATTG  
AACCTTGGCTCTCC

**ACGCGT**ACGCGGCCGCTCGAGCAGAACTCATCTCAGAAGAGGATCTGGCAGCAAATGATATCTGGATT  
ACAAGGATGACGACGATAAGGTTTAA



[View online »](#)

**Protein Sequence:** >RC214575 representing NM\_138717  
Red=Cloning site Green=Tags(s)

MKSCGSMGLGCGQRLPAAWVLLLLPFLPLLLLAAAPHRASYKPVIVVHGLFDSSYSFRHLLEYINETHP  
 GTVVTVLDFDRESLRPLWEQVQGFREAVVPIMAKAPQGVHLICYSQGGVLCRALLSVMDHNVDSFIS  
 LSSPQMGGYGD TDYLKWLFP TSMRNL YRICYSPWQEF SICNYWHPHDDL YLNASSFLALINGERDH  
 PNATVWRKNFLRVGHLVLIIGPDDGVITPWQSSFFGFYDANETVLEMEEQLVYL RDSFGLK TLLARGAIV  
 RCPMAGISHTAWHSNRTLYETCIEPWLS

TRTRPLEQKLISEEDLAANDILDYKDDDDKV

**Chromatograms:** [https://cdn.origene.com/chromatograms/mk8052\\_a02.zip](https://cdn.origene.com/chromatograms/mk8052_a02.zip)

**Restriction Sites:** SgfI-MluI

**Cloning Scheme:**



**ACCN:** NM\_138717

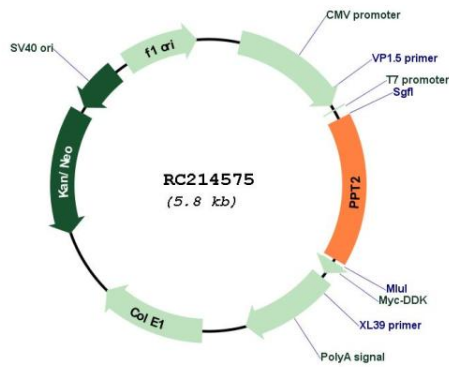
**ORF Size:** 924 bp

**OTI Disclaimer:** Due to the inherent nature of this plasmid, standard methods to replicate additional amounts of DNA in E. coli are highly likely to result in mutations and/or rearrangements. Therefore, OriGene does not guarantee the capability to replicate this plasmid DNA. Additional amounts of DNA can be purchased from OriGene with batch-specific, full-sequence verification at a reduced cost. Please contact our customer care team at [custsupport@origene.com](mailto:custsupport@origene.com) or by calling 301.340.3188 option 3 for pricing and delivery.

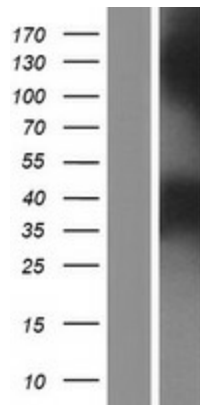
The molecular sequence of this clone aligns with the gene accession number as a point of reference only. However, individual transcript sequences of the same gene can differ through naturally occurring variations (e.g. polymorphisms), each with its own valid existence. This clone is substantially in agreement with the reference, but a complete review of all prevailing variants is recommended prior to use. [More info](#)

<b>OTI Annotation:</b>	This clone was engineered to express the complete ORF with an expression tag. Expression varies depending on the nature of the gene.
<b>Components:</b>	The ORF clone is ion-exchange column purified and shipped in a 2D barcoded Matrix tube containing 10ug of transfection-ready, dried plasmid DNA (reconstitute with 100 ul of water).
<b>Reconstitution Method:</b>	<ol style="list-style-type: none"><li>1. Centrifuge at 5,000xg for 5min.</li><li>2. Carefully open the tube and add 100ul of sterile water to dissolve the DNA.</li><li>3. Close the tube and incubate for 10 minutes at room temperature.</li><li>4. Briefly vortex the tube and then do a quick spin (less than 5000xg) to concentrate the liquid at the bottom.</li><li>5. Store the suspended plasmid at -20°C. The DNA is stable for at least one year from date of shipping when stored at -20°C.</li></ol>
<b>RefSeq:</b>	<a href="#">NM_138717.3</a>
<b>RefSeq Size:</b>	1772 bp
<b>RefSeq ORF:</b>	927 bp
<b>Locus ID:</b>	9374
<b>UniProt ID:</b>	<a href="#">Q9UMR5</a>
<b>Cytogenetics:</b>	6p21.32
<b>Domains:</b>	Palm_thioest
<b>Protein Families:</b>	Transmembrane
<b>Protein Pathways:</b>	Fatty acid elongation in mitochondria, Lysosome, Metabolic pathways
<b>MW:</b>	31.2 kDa
<b>Gene Summary:</b>	This gene encodes a member of the palmitoyl-protein thioesterase family. The encoded glycosylated lysosomal protein has palmitoyl-CoA hydrolase activity in vitro, but does not hydrolyze palmitate from cysteine residues in proteins. Alternative splicing results in multiple transcript variants. Read-through transcription also exists between this gene and the downstream EGFL8 (EGF-like-domain, multiple 8) gene. [provided by RefSeq, Feb 2011]

Product images:



Circular map for RC214575



Western blot validation of overexpression lysate (Cat# [LY408528]) using anti-DDK antibody (Cat# [TA50011-100]). Left: Cell lysates from untransfected HEK293T cells; Right: Cell lysates from HEK293T cells transfected with RC214575 using transfection reagent MegaTran 2.0 (Cat# [TT210002]).