

## Product datasheet for RC214573

### GLEPP1 (PTPRO) (NM\_030668) Human Tagged ORF Clone

#### Product data:

Product Type:	Expression Plasmids
Product Name:	GLEPP1 (PTPRO) (NM_030668) Human Tagged ORF Clone
Tag:	Myc-DDK
Symbol:	GLEPP1
Synonyms:	GLEPP1; NPHS6; PTP-OC; PTP-U2; PTPROT; PTPU2; R-PTP-O
Mammalian Cell Selection:	Neomycin
Vector:	pCMV6-Entry (PS100001)
E. coli Selection:	Kanamycin (25 ug/mL)
ORF Nucleotide Sequence:	>RC214573 representing NM_030668 Red=Cloning site Blue=ORF Green=Tags(s)

TTTTGTAATACGACTCACTATAGGGCGGCCGGAATTCGTCGACTGGATCCGGTACCGAGGAGATCTGCC  
GCC**CGATCGCC**

ATGGTTACAGAGATGAATCCCAATGTGGTAGTGATCTCCGTGCTGGCCATCCTTAGCACACTTTAATTG  
GACTGTTGCTTGTACCCTCATTATTCTTAGGAAAAGCATCTGCAGATGGCTAGGGAGTGTGGAGCTGG  
TACATTTGTCAATTTGCATCCTTAGAGAGGGATGAAAGCTCCATACAACCTGGAGTAAAAATGGTTTA  
AAGAAGAGGAACTGACAAACCCGGTCAACTGGATGACTTTGATGCCTATATTAAGGATATGGCCAAAG  
ACTCTGACTATAAATTTCTCTTCAGTTTGAGGAGTTGAAATTGATTGGACTGGATATCCACACTTTGC  
TGCAGATCTTCCACTGAATCGATGTAAAAACCGTTACACAACATCCTACCATATGACTTCAGCCGTGTG  
AGATTAGTCTCCATGAATGAAGAGGAAGGTGCAGACTACATCAATGCCAACTATATTCCTGGATAACCT  
CACCCAGGAGTATATTGCCACCCAGGGGCCACTGCCTGAAACCAGAAATGACTTCTGGAAGATGGTCTT  
GCAACAAAAGTCTCAGATTATTGTATGCTCACTCAGTGTAAATGAGAAAAGGAGGGTGAATGTGACCAT  
TACTGGCCATTCACGGAAGAACCTATAGCCTATGGAGACATCACTGTGGAGATGATTTTCAGAGGAAGAGC  
AGGACGACTGGCCTGTAGACACTTCCGGATCAACTATGCTGACGAGATGCAGGATGTGATGATTTTAA  
CTACACTGCATGGCCTGATCATGGTGTGCCACAGCAAATGCTGCAGAAAGTATCCTGCAGTTTGTACAC  
ATGGTCCGACAGCAAGCTACCAAGAGCAAAGTCCCATGATCATTCACTGCAGTGTGGCGTGGGACGGA  
CAGGAACATTATTGCCCTGGACAGGCTCTTGCAGCACATTCGGGATCATGAGTTTGTGACATCTTAGG  
GCTGGTGTGAGAAATGAGGTCATACCGGATGTCTATGGTACAGACAGAGGAGCAGTACATTTTATCCAT  
CAGTGTGTGCAACTGATGTGGATGAAGAAGAAGCAGCAGTTCTGCATCAGTGTGATGATACGAGAATG  
TTAGCAAGTCC

**ACGCGT**ACGCGGCCGCTCGAGCAGAAACTCATCTCAGAAGAGGATCTGGCAGCAAATGATATCCTGGATT  
ACAAGGATGACGACGATAAGGTTTAA



[View online »](#)

**Protein Sequence:** >RC214573 representing NM\_030668  
 Red=Cloning site Green=Tags(s)

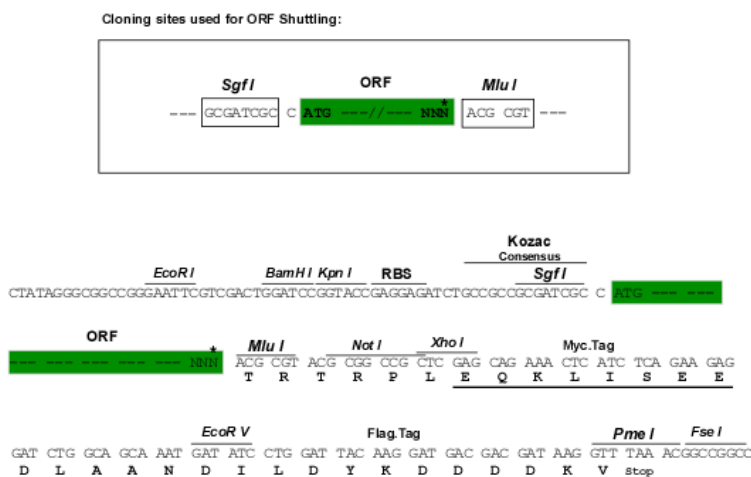
MVTEMNPVVVISVLAILSTLLIGLLLVTLIILRKKHLQMARECGAGTFVNFASLERDGLPYNWSKNGL  
 KKRKL TNPVQLDDFDAYIKDMAKDSYKFSLQFEELKLIGLDIPHFAADLPLNRCKNRYTNILPYDFSRV  
 RLVSMNEEGADYINANYIPGYNSPQEYIATQGPLPETRNDFWKMWLQQKSQIIIVMLTQCNEKRRVKCDH  
 YWPFTEEPIAYGDITVEMI SEEEQDDWACRHFRIYADEMQDVMHFNYTAWPDHGVPTANAAESILQFVH  
 MVRQQATKSKGPMIIHCSAGVGRGTGTFIALDRLLQHIRDHEFVDILGLVSEMRSYRMSVMVQTEEQYIFIH  
 QCVQLMWMKKKQFCISDVIYENVSKS

TRTRPLEQKLISEEDLAANDILDYKDDDDKV

**Chromatograms:** [https://cdn.origene.com/chromatograms/mk8055\\_g10.zip](https://cdn.origene.com/chromatograms/mk8055_g10.zip)

**Restriction Sites:** SgfI-MluI

**Cloning Scheme:**



**ACCN:** NM\_030668

**ORF Size:** 1131 bp

**OTI Disclaimer:** The molecular sequence of this clone aligns with the gene accession number as a point of reference only. However, individual transcript sequences of the same gene can differ through naturally occurring variations (e.g. polymorphisms), each with its own valid existence. This clone is substantially in agreement with the reference, but a complete review of all prevailing variants is recommended prior to use. [More info](#)

**OTI Annotation:** This clone was engineered to express the complete ORF with an expression tag. Expression varies depending on the nature of the gene.

**Components:** The ORF clone is ion-exchange column purified and shipped in a 2D barcoded Matrix tube containing 10ug of transfection-ready, dried plasmid DNA (reconstitute with 100 ul of water).

**Reconstitution Method:**

1. Centrifuge at 5,000xg for 5min.
2. Carefully open the tube and add 100ul of sterile water to dissolve the DNA.
3. Close the tube and incubate for 10 minutes at room temperature.
4. Briefly vortex the tube and then do a quick spin (less than 5000xg) to concentrate the liquid at the bottom.
5. Store the suspended plasmid at -20°C. The DNA is stable for at least one year from date of shipping when stored at -20°C.

**RefSeq:** [NM\\_030668.3](#)

**RefSeq Size:** 2948 bp

**RefSeq ORF:** 1134 bp

**Locus ID:** 5800

**UniProt ID:** [Q16827](#)

**Cytogenetics:** 12p13-p12

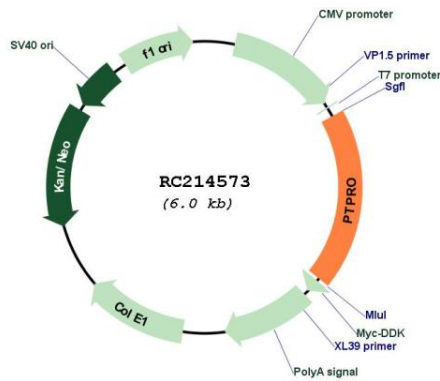
**Domains:** Y\_phosphatase, PTPc\_motif

**Protein Families:** Phosphatase, Transmembrane

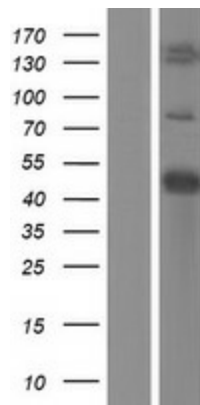
**MW:** 43.6 kDa

**Gene Summary:** This gene encodes a member of the R3 subtype family of receptor-type protein tyrosine phosphatases. These proteins are localized to the apical surface of polarized cells and may have tissue-specific functions through activation of Src family kinases. This gene contains two distinct promoters, and alternatively spliced transcript variants encoding multiple isoforms have been observed. The encoded proteins may have multiple isoform-specific and tissue-specific functions, including the regulation of osteoclast production and activity, inhibition of cell proliferation and facilitation of apoptosis. This gene is a candidate tumor suppressor, and decreased expression of this gene has been observed in several types of cancer. [provided by RefSeq, May 2011]

Product images:



Circular map for RC214573



Western blot validation of overexpression lysate (Cat# [LY410736]) using anti-DDK antibody (Cat# [TA50011-100]). Left: Cell lysates from untransfected HEK293T cells; Right: Cell lysates from HEK293T cells transfected with RC214573 using transfection reagent MegaTran 2.0 (Cat# [TT210002]).