

## Product datasheet for **RC214558**

### SLITRK5 (NM\_015567) Human Tagged ORF Clone

#### Product data:

Product Type:	Expression Plasmids
Product Name:	SLITRK5 (NM_015567) Human Tagged ORF Clone
Tag:	Myc-DDK
Symbol:	SLITRK5
Synonyms:	bA364G4.2; LRRC11
Mammalian Cell Selection:	Neomycin
Vector:	pCMV6-Entry (PS100001)
E. coli Selection:	Kanamycin (25 ug/mL)



[View online »](#)

**ORF Nucleotide Sequence:**

>RC214558 representing NM\_015567  
 Red=Cloning site Blue=ORF Green=Tags(s)

TTTTGTAATACGACTCACTATAGGGCGGCCGGAATTCGTCGACTGGATCCGGTACCGAGGAGATCTGCC  
 GCC**CGGATCGCC**

ATGCACACTTGCTGCCCCCAGTAACTTTGGAACAGGACCTTCACAGAAAAATGCATAGCTGGATGCTGC  
 AGACTCTAGCGTTTGCTGTAACATCTCTCGTCCTTCGTGTGCAGAAACCATCGATTATTATGGGAAAT  
 CTGTGACAATGCATGTCCTTGTGAGGAAAAGGACGGCATTTTAACTGTGAGCTGTGAAAACCGGGGATC  
 ATCAGTCTCTGAAATTAGCCCTCCCCGTTTCCCAATCTACCACCTCTTGTGTCCGAAAACCTTTTGA  
 ACCGTCTCTATCCCAATGAGTTTGTCAATTACACTGGGGCTTCAATTTTGCATCTAGGTAGCAATGTTAT  
 CCAGGACATTGAGACCGGGGCTTCCATGGGCTACGGGTTTGGAGAGATTGCATCTAAACAATAATAAA  
 CTGGAACCTTCTGCGAGATGATACCTTCTTGGCTTGGAGAACCTGGAGTACCTACAGGTCGATTACAAC  
 ACATCAGCGTCATTGAACCCAATGCTTTTGGGAACTGCATTTGTGCAGGTGCTTATCCTCAATGACAA  
 TCTTTTGTCCAGTTTACCAACAATCTTTCCGTTTTGTGCCCTTAACGCACTTGGACCTCCGGGGGAAAC  
 CGGCTGAAACTTCTGCCCTACGTGGGGCTTGCAGCACATGGATAAAGTTGTGGAGCTACAGCTGGAGG  
 AAAACCTTGAATTGTTCTTGTGAGCTGATCTCTCTAAAGGATTGGTTGGACAGCATCTCTATTACAGC  
 CCTGGTGGGGATGTAGTTTGTGAGACCCCTTCCGCTTACACGGAAGGGACTTGGACGAGGTATCCAAG  
 CAGGAACCTTGGCCAAGGAGACTTATTTCTGACTACGAGATGAGGCCGACAGCGCTTTGAGCACCACGG  
 GGTATTTACACACCACCCGGCGTCAGTGAATTCTGTGGCCACTTCTTCTCTGCTGTTTACAAACCCCT  
 TTTGAAGCCCTAAGGGGACTCGCAACCAACAAGCCAGGGTGCAGCCACCTCTCGGACGCGCTCT  
 AAGGACTTGGGCTACAGCAACTATGGCCCGCAGCATCGCTATCAGACCAATCCCGGTGCTTTGGAGT  
 GTCCACCGCGTCTTGTCAACCTGCAGATCTGTGATCTGGCCCTCAACGTAACCTGCCAGGAGCGAAA  
 GATCGAGAGCATCGCTGAACTGCAGCCCAAGCCCTACAATCCCAAGAAAATGTATCTGACAGAGAACTAC  
 ATCGCTGTGTCGCGCAGGACAGACTTCTGGAGGCCACGGGGCTGGACCTCTGCACCTGGGGAATAACC  
 GCATCTCGATGATCCAGGACCGCTTTTCGGGATCTCACCAACCTGAGGCGCTCTACCTGAATGGCAA  
 CAGGATCGAGAGGCTGAGCCCGGAGTTATTCTATGGCTGCAGAGCTGCAGTATCTTCTCCTCCAGTAC  
 AATCTCATCCGCGAGATTCAGTCTGGAACCTTTGACCCGGTCCCAACCTCCAGCTGCTATTCTTGAATA  
 ACAACCTCTGCAGGCCATGCCCTCAGGCGTCTTCTCTGGCTTGACCTCCTCAGGCTAACCTGAGGAG  
 TAACCACTCACCTCTTGCAGTGAGTGGAGTTTGGACCAGCTGAAGTCACTCATCCAATCGACCTG  
 CATGACAATCCTTGGGATTGTACCTGTGACATTGTGGCATGAAGCTGTGGTGGAGCAGCTCAAAGTGG  
 GCGTCTAGTGGACGAGGTGATCTGTAAGGCGCCAAAAAATTCGCTGAGACCGACATGCCTCCATTAA  
 GTCGGAGCTGCTGTGCCCTGACTATTAGATGTAGTTCACGCCCCACCCCTCTATCCAGGTC  
 CCTGCGAGGACCAGCGCGTACTCTGCGGTCCGGTTGAATAGCACCGGGGCCCGCGAGCTTGGGCG  
 CAGGCGGAGGGGCGTCTGCGGTGCCCTTGTCTGTGTTAATCTCAGCCTCCTGCTGGTTTTATCATATGC  
 CGTCTTCTGGCCGCGGGCTCTTCTGCTGGTTCATGAAGCGCAGGAAGAAGAACCAGAGCGACCACACC  
 AGCACCAACAACCTCCGACGTGAGCTCCTTAAACATGCAGTACAGCGTGTACGGCGCGCGGCGGCACGG  
 GCGGCCACCCACACGCGCAGTGCATCACCGGGGCCCGCTGCCAAGGTGAAGACGCCCGCGGGCCA  
 CGTGTATGAATACATCCCCACCCACTGGGCCACATGTGCAAAAACCCATCTACCGCTCCCGAGAGGGC  
 AACTCCGTAGAGGATTACAAAGACCTGCAGAGCTCAAGGTACCTACAGCAGCAACCACCACTGCAGC  
 AGCAGCAGCAGCCGCGCGCCACCGCAGCAGCCACAGCAGCAGCCCGCGCGAGCTGCAGCTGCAGCC  
 CGGGGAGGAGGAGAGCGGGAAAGCCACCACTTGCAGGAGCCCGCTACAGCGTACGACCATCGAGCCC  
 CGGGAGGACCTGCTGTGCGCGTGCAGGACCGGACCGCTTTTACAGGGGCAATTTAGAACCAGACAAAAC  
 ACTGCTCCACCACCCCGCGCAATAGCTCCCGGAATATCCAAATCCCGTGCAGCCCGCTGCTTA  
 CACTTTCTCCCCAACTATGACCTGAGACGCCCCATCAGTATTTGCACCCGGGGCAGGGGACAGCAGG  
 CTACGGGAACCGGTGCTCTACAGCCCCGAGTGTCTTTGTAGAACCAACCGGAACGAATATCTGG  
 AGTTAAAAGCAAACTAAACGTTGAGCCGACTACCTCGAAGTGTGAAAAACAGACCAGTGTAGCCA  
 GTTC

**ACGCGT**ACGCGGCCGCTCGAGCAGAACTCATCTCAGAAGAGGATCTGGCAGCAAATGATATCCTGGATT  
 ACAAGGATGACGACGATAAGGTTTAA

**Protein Sequence:** >RC214558 representing NM\_015567  
 Red=Cloning site Green=Tags(s)

MHTCCPPVTLEQDLHRKMHSWMLQTLAFVTSVLVLSCAETIDYYGEICDNACPCEEKDGILTVSCENRGI  
 ISLSEISPPRFPIYHLLLSGNLLNRLYPNEFVNYTGASILHLGNSVIQDIETGAFHGLRGLRRLHLNNNK  
 LELLRDDTFLGLENLEYLQVDYNYISVIEPNAFGKLHLLQVLIILNDNLLSSLPNNLFRFVPLTHLDLRGN  
 RLKLLPYVGLLQHMDKVVELQLEENPWNCSELISLKDWLDSISYSALVGDVVCETPFRLHGRDLDEVSK  
 QELCPRRLISDYEMRPQTPLSTTGYLHTTPASVNSVATSSSAVYKPKPKPKGTRQPNKPRVPTSRQPS  
 KDLGYSNYGPSIAYQTKSPVPLECPTACSCNLQISDLGLNVNCQERKIESIAELQPKPYNPKKMYLTENY  
 IAVVRRDTFLEATGLDLLHLGNNRISMIQDRAFGDLTNLRRLYLNGNRIERLSPELFYGLQSLQYLFLQY  
 NLIREIQSGTFDPVPLQLLFLNNDLQAMP SGVFSGLTLLRNLRSNHFTSLPVSGLDQLKSLIQIDL  
 HDNPWDCDCDIVGMKLWVEQLKVGVLVDEVIKAPKFAETDMRSIKSELLCPDYSDVVSTPTPSSIQV  
 PARTSAVTPAVRLNSTGAPASLGAGGGASSVPLSVLILSLLLVFIMSVFVAAGLFLVMKRRKKNQSDHT  
 STNNSDVSSFNMQYSVYGGGGTGGHPAHVHHRGPALPKVKTPAGHVYIYIPHLGHMCKNPIYRSREG  
 NSVEDYKDLHELKVTYSSNHHLQQQQQPPPPQPPQQPPQLQLQPGEERRESHHLRSPAYSVSTIEP  
 REDLLSPVQADRFRYGIPEPKHCSTTPAGNSLPEYKFPKPCSPAAYTFSPNYDLRRPHQYLHPGAGDSR  
 LREPVL YSPPSAVFVEPNRNEYLELKAKLNVEPDYLEVLEKQTTFSQF

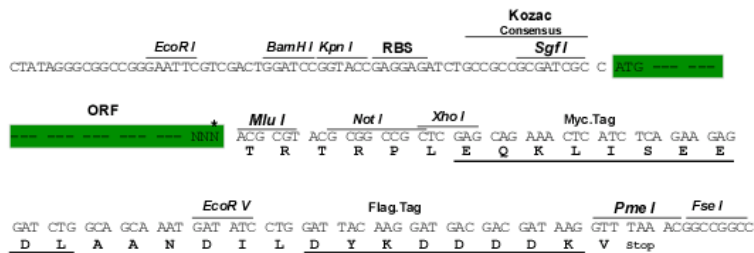
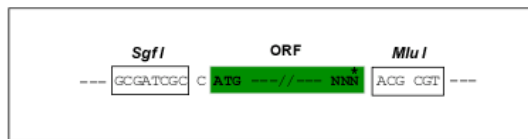
TRTRPLEQKLISEEDLAANDILDYKDDDDKV

**Chromatograms:** [https://cdn.origene.com/chromatograms/mg4064\\_f01.zip](https://cdn.origene.com/chromatograms/mg4064_f01.zip)

**Restriction Sites:** SgfI-MluI

**Cloning Scheme:**

Cloning sites used for ORF Shuttling:



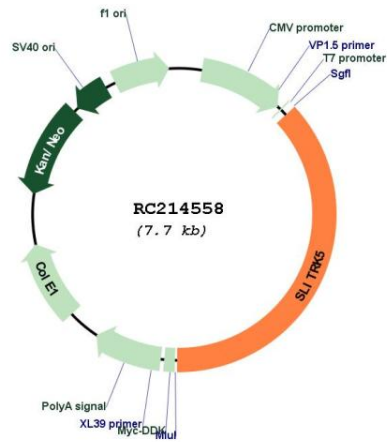
\* The last codon before the Stop codon of the ORF

**ACCN:** NM\_015567

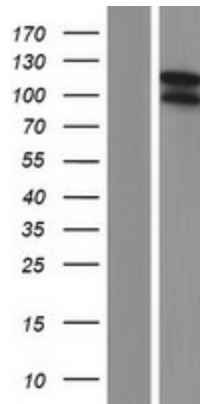
**ORF Size:** 2874 bp

<b>OTI Disclaimer:</b>	The molecular sequence of this clone aligns with the gene accession number as a point of reference only. However, individual transcript sequences of the same gene can differ through naturally occurring variations (e.g. polymorphisms), each with its own valid existence. This clone is substantially in agreement with the reference, but a complete review of all prevailing variants is recommended prior to use. <a href="#">More info</a>
<b>OTI Annotation:</b>	This clone was engineered to express the complete ORF with an expression tag. Expression varies depending on the nature of the gene.
<b>Components:</b>	The ORF clone is ion-exchange column purified and shipped in a 2D barcoded Matrix tube containing 10ug of transfection-ready, dried plasmid DNA (reconstitute with 100 ul of water).
<b>Reconstitution Method:</b>	<ol style="list-style-type: none"><li>1. Centrifuge at 5,000xg for 5min.</li><li>2. Carefully open the tube and add 100ul of sterile water to dissolve the DNA.</li><li>3. Close the tube and incubate for 10 minutes at room temperature.</li><li>4. Briefly vortex the tube and then do a quick spin (less than 5000xg) to concentrate the liquid at the bottom.</li><li>5. Store the suspended plasmid at -20°C. The DNA is stable for at least one year from date of shipping when stored at -20°C.</li></ol>
<b>RefSeq:</b>	<a href="#">NM_015567.2</a>
<b>RefSeq Size:</b>	4461 bp
<b>RefSeq ORF:</b>	2877 bp
<b>Locus ID:</b>	26050
<b>UniProt ID:</b>	<a href="#">O94991</a>
<b>Cytogenetics:</b>	13q31.2
<b>Protein Families:</b>	Transmembrane
<b>MW:</b>	107.3 kDa
<b>Gene Summary:</b>	Members of the SLITRK family, such as SLITRK5, are integral membrane proteins with 2 N-terminal leucine-rich repeat (LRR) domains similar to those of SLIT proteins (see SLIT1; MIM 603742). Most SLITRKs, including SLITRK5, also have C-terminal regions that share homology with neurotrophin receptors (see NTRK1; MIM 191315). SLITRKs are expressed predominantly in neural tissues and have neurite-modulating activity (Aruga et al., 2003 [PubMed 14557068]). [supplied by OMIM, Mar 2008]

Product images:



Circular map for RC214558



Western blot validation of overexpression lysate (Cat# [LY414479]) using anti-DDK antibody (Cat# [TA50011-100]). Left: Cell lysates from untransfected HEK293T cells; Right: Cell lysates from HEK293T cells transfected with RC214558 using transfection reagent MegaTran 2.0 (Cat# [TT210002]).