

## Product datasheet for **RC214557**

### beta Catenin (CTNNB1) (NM\_001098210) Human Tagged ORF Clone

#### Product data:

Product Type:	Expression Plasmids
Product Name:	beta Catenin (CTNNB1) (NM_001098210) Human Tagged ORF Clone
Tag:	Myc-DDK
Symbol:	beta Catenin
Synonyms:	armadillo; CTNNB; EVR7; MRD19; NEDSDV
Mammalian Cell Selection:	Neomycin
Vector:	pCMV6-Entry (PS100001)
E. coli Selection:	Kanamycin (25 ug/mL)



[View online »](#)

**ORF Nucleotide Sequence:**

>RC214557 representing NM\_001098210  
 Red=Cloning site Blue=ORF Green=Tags(s)

TTTTGTAATACGACTCACTATAGGGCGGCCGGAATTCGTCGACTGGATCCGGTACCGAGGAGATCTGCC  
 GCC**CGCATCGCC**

ATGGCTACTCAAGCTGATTTGATGGAGTTGGACATGGCCATGGAACCAGACAGAAAAGCGGCTGTTAGTC  
 ACTGGCAGCAACAGTCTTACCTGGACTCTGGAATCCATTCGGTGCCACTACCACAGCTCCTTCTCTGAG  
 TGGTAAAGGCAATCCTGAGGAAGAGGATGTGGATACCTCCCAAGTCTGTATGAGTGGAAACAGGGATT  
 TCTCAGTCCTTCACTCAAGAACAAGTAGCTGATATTGATGGACAGTATGCAATGACTCGAGCTCAGAGGG  
 TACGAGCTGCTATGTTCCCTGAGACATTAGATGAGGGCATGCAGATCCCATCTACACAGTTTGTGCTGC  
 TCATCCCCTAATGTCCAGCGTTTGGCTGAACCATCACAGATGCTGAAACATGCAGTTGTAACCTTGATT  
 AACTATCAAGATGATGCAGAATGGCCACACGTGCAATCCCTGAACTGACAAAACGCTAAATGACGAGG  
 ACCAGGTGGTGGTAAATAAGGCTGCAGTTATGGTCCATCAGCTTCTAAAAAGGAAGCTCCAGACACGC  
 TATCATGCGTTCTCCTCAGATGGTGTCTGCTATTGTACGTACCATGCAGAATACAATGATGTAGAAACA  
 GCTCGTTGTACCGCTGGGACCTTGCCATAACCTTCCCATCATCGTGAGGGCTTACTGGCCATCTTTAAGT  
 CTGGAGGCATTCCTGCCCTGGTGAATGCTTGGTTCCACAGTGGATTCTGTGTTGTTTTATGCCATTAC  
 AACTCTCCACAACCTTTTATTACATCAAGAAGGAGCTAAAATGGCAGTGCCTTTAGCTGGTGGGCTGCAG  
 AAAATGGTTGCCTTGCTCAACAAAACAAATGTTAAATCTTGGCTATTACGACAGACTGCCTTCAAATTT  
 TAGCTTATGGCAACCAAGAAAGCAAGCTCATCATACTGGCTAGTGGTGGACCCCAAGCTTTAGTAAATAT  
 AATGAGGACCTATACTTACGAAAACACTACTGTGGACCACAAGCAGAGTGCAGAGTGCATCTGTCTGC  
 TCTAGTAATAAGCCGGCTATTGTAGAAGCTGGTGAATGCAAGCTTTAGGACTTCACCTGACAGATCCAA  
 GTCAACGCTTTGTTCAGAACTGCTTTGGACTCTCAGGAATCTTCAGATGCTGCAACTAAACAGGAAGG  
 GATGGAAGGTCTCCTTGGGACTCTTGTTCAGCTTCTGGGTTCCAGATGATATAAATGTGGTCACCTGTGCA  
 GCTGGAATCTTTCTAACCTCACTTGAATAATTATAAGAACAAGATGATGGTCTGCCAAGTGGGTGGTA  
 TAGAGGCTCTTGTGCGTACTGTCCTTCGGGCTGGTACAGGGAAGACATCACTGAGCCTGCCATCTGTGC  
 TCTTCGTCATCTGACCAGCCGACACCAAGAAGCAGAGATGGCCAGAATGCAGTTCGCCTTCACTATGGA  
 CTACCAGTTGTGGTTAAGCTCTTACACCCACCATCCCACTGGCCTCTGATAAAGGCTACTGTTGGATTGA  
 TTCGAAATCTTGCCTTTGTCCCGCAAATCATGCACCTTTGCGTGAGCAGGGTGCATTCCACGACTAGT  
 TCAGTTGCTTGTTCGTGCACATCAGGATACCCAGCGCGTACGTCCATGGGTGGGACACAGCAGCAATTT  
 GTGGAGGGGGTCCGCATGGAAGAAATAGTTGAAGTTGTACCGGAGCCCTTACATCCTAGCTCGGGATG  
 TTCACAACCGAATTGTTATCAGAGGACTAAATACCATTCCATTGTTTGTGAGCTGCTTTATTCTCCCAT  
 TGAAAACATCCAAGAGTAGCTGCAGGGTCTCTGTGAACCTGCTCAGGACAAGGAAGTGCAGAAAGCT  
 ATTGAAGCTGAGGGAGCCACAGCTCCTCTGACAGAGTTACTTCACTCTAGGAATGAAGGTGTGGCGACAT  
 ATGCAGCTGCTGTTTTGTTCCGAATGTCTGAGGACAAGCCACAAGATTACAAGAAACGGCTTTCAGTTGA  
 GCTGACCAGCTCTCTCTCAGAACAGAGCCAATGGCTTGGAAATGAGACTGCTGATCTTGGACTTGATATT  
 GGTGCCCAGGGGAGAACCCTTGGATATCGCCAGGATGATCCTAGCTATCGTCTTTTCACTCTGGTGGAT  
 ATGGCCAGGATGCCTTGGTATGGACCCCATGATGGAACATGAGATGGGTGGCCACCACCCTGGTGTGA  
 CTATCCAGTTGATGGGCTGCCAGATCTGGGGCATGCCAGGACCTCATGGATGGGCTGCCTCCAGGTGAC  
 AGCAATCAGCTGGCCTGGTTTGATACTGACCTG

**ACGCGT**ACGCGGCCGCTCGAGCAGAAAACCTCATCTCAGAAGAGGATCTGGCAGCAAATGATATCCTGGATT  
 ACAAGGATGACGACGATAAGGTTTAA

**Protein Sequence:** >RC214557 representing NM\_001098210  
Red=Cloning site Green=Tags(s)

MATQADLMELDMAMEPDRKAAVSHWQQSYLDSGIHSGATTTAPSLSGKGNPEEEDVDTSQVLYEWEQGF  
SQSFTQEQVADIDGQYAMTRAQRVRAAMFPETLDEGMQIPSTQFDDAAHPTNVQRLAEPQMLKHAVVNI  
NYQDDAELATRAIPELTKLLNDEDQVVVNKAAMVHQLSKKEASRHAIMRSPQMVSIVRTMONTNDVET  
ARCTAGTLHNLSSHREGLLAIIFKSGGIPALVKMLGSPVDSVLFYAITTLHNLHLLHQEGAKMAVRLAGGLQ  
KMVALLNKTNVKFLAITTDCLQILAYGNQESKLIILASGGPQALVNIMRTYTYEKLLWTTSRVVKVLSVC  
SSNKPAIVEAGGMQALGHLHTDPSQRLVQNCLWTLRNLSDAATKQEGMEGLLGTLVQLLGSDDINVTCA  
AGILSNLTCNNYKNMMVCQVGGIEALVRTVLRAGDREDITEPAICALRHLLSRHQEAEMAQNAVRLHYG  
LPVVVLLHPPSHWPLIKATVGLIRNLALCPANHAPLREQGAIPLRVQLLVRAHQDTQRRTSMGGTQQQF  
VEGVRMEEIVEGCTGALHILARDVHNRI VIRGLNTIPLFVQLLYSPIENIQRVAAGVLCELAQDKEAAEA  
IEAEGATAPL TELLHSRNEGVATYAAAVLFRMSEDKPQDYKKRLSVELTSSLFRTEPMAWNETADLGLDI  
GAQGEPLGYRQDDPSYRSFHSGGYGQDALGMDPMEHEMGGHHPGADYPVDGLPDLGHAQDLMGDLPPGD  
SNQLAWFDTDL

TRTRPLEQKLI SEEDLAANDILDYKDDDDKV

**Chromatograms:** [https://cdn.origene.com/chromatograms/mg2717\\_a01.zip](https://cdn.origene.com/chromatograms/mg2717_a01.zip)

**Restriction Sites:** Sgfl-Mlul

Cloning Scheme:



ACCN: NM\_001098210

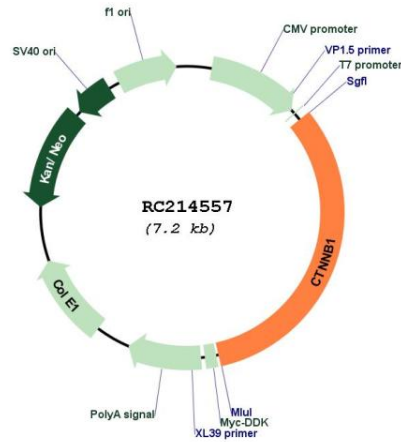
ORF Size: 2343 bp

OTI Disclaimer: Due to the inherent nature of this plasmid, standard methods to replicate additional amounts of DNA in E. coli are highly likely to result in mutations and/or rearrangements. Therefore, OriGene does not guarantee the capability to replicate this plasmid DNA. Additional amounts of DNA can be purchased from OriGene with batch-specific, full-sequence verification at a reduced cost. Please contact our customer care team at [custsupport@origene.com](mailto:custsupport@origene.com) or by calling 301.340.3188 option 3 for pricing and delivery.

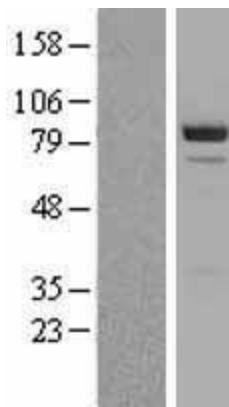
The molecular sequence of this clone aligns with the gene accession number as a point of reference only. However, individual transcript sequences of the same gene can differ through naturally occurring variations (e.g. polymorphisms), each with its own valid existence. This clone is substantially in agreement with the reference, but a complete review of all prevailing variants is recommended prior to use. [More info](#)

<b>OTI Annotation:</b>	This clone was engineered to express the complete ORF with an expression tag. Expression varies depending on the nature of the gene.
<b>Components:</b>	The ORF clone is ion-exchange column purified and shipped in a 2D barcoded Matrix tube containing 10ug of transfection-ready, dried plasmid DNA (reconstitute with 100 ul of water).
<b>Reconstitution Method:</b>	<ol style="list-style-type: none"><li>1. Centrifuge at 5,000xg for 5min.</li><li>2. Carefully open the tube and add 100ul of sterile water to dissolve the DNA.</li><li>3. Close the tube and incubate for 10 minutes at room temperature.</li><li>4. Briefly vortex the tube and then do a quick spin (less than 5000xg) to concentrate the liquid at the bottom.</li><li>5. Store the suspended plasmid at -20°C. The DNA is stable for at least one year from date of shipping when stored at -20°C.</li></ol>
<b>RefSeq:</b>	<a href="#">NM_001098210.2</a>
<b>RefSeq Size:</b>	3256 bp
<b>RefSeq ORF:</b>	2346 bp
<b>Locus ID:</b>	1499
<b>UniProt ID:</b>	<a href="#">P35222</a>
<b>Cytogenetics:</b>	3p22.1
<b>Protein Families:</b>	Druggable Genome, ES Cell Differentiation/IPS, Transcription Factors
<b>Protein Pathways:</b>	Adherens junction, Arrhythmogenic right ventricular cardiomyopathy (ARVC), Basal cell carcinoma, Colorectal cancer, Endometrial cancer, Focal adhesion, Leukocyte transendothelial migration, Melanogenesis, Pathogenic Escherichia coli infection, Pathways in cancer, Prostate cancer, Thyroid cancer, Tight junction, Wnt signaling pathway
<b>MW:</b>	85.3 kDa
<b>Gene Summary:</b>	The protein encoded by this gene is part of a complex of proteins that constitute adherens junctions (AJs). AJs are necessary for the creation and maintenance of epithelial cell layers by regulating cell growth and adhesion between cells. The encoded protein also anchors the actin cytoskeleton and may be responsible for transmitting the contact inhibition signal that causes cells to stop dividing once the epithelial sheet is complete. Finally, this protein binds to the product of the APC gene, which is mutated in adenomatous polyposis of the colon. Mutations in this gene are a cause of colorectal cancer (CRC), pilomatrixoma (PTR), medulloblastoma (MDB), and ovarian cancer. Alternative splicing results in multiple transcript variants. [provided by RefSeq, Aug 2016]

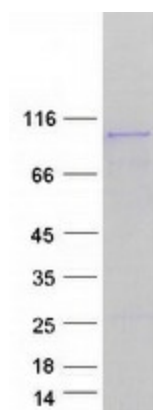
Product images:



Circular map for RC214557



Western blot validation of overexpression lysate (Cat# [LY420558]) using anti-DDK antibody (Cat# [TA50011-100]). Left: Cell lysates from untransfected HEK293T cells; Right: Cell lysates from HEK293T cells transfected with RC214557 using transfection reagent MegaTran 2.0 (Cat# [TT210002]).



Coomassie blue staining of purified CTNNB1 protein (Cat# [TP314557]). The protein was produced from HEK293T cells transfected with CTNNB1 cDNA clone (Cat# RC214557) using MegaTran 2.0 (Cat# [TT210002]).