

## Product datasheet for **RC214556**

### **CABP2 (NM\_016366) Human Tagged ORF Clone**

#### Product data:

Product Type:	Expression Plasmids
Product Name:	CABP2 (NM_016366) Human Tagged ORF Clone
Tag:	Myc-DDK
Symbol:	CABP2
Synonyms:	DFNB93
Mammalian Cell Selection:	Neomycin
Vector:	pCMV6-Entry (PS100001)
E. coli Selection:	Kanamycin (25 ug/mL)
ORF Nucleotide Sequence:	>RC214556 representing NM_016366 Red=Cloning site Blue=ORF Green=Tags(s)

TTTTGTAATACGACTCACTATAGGGCGCCGGGAATTCGTCGACTGGATCCGGTACCGAGGAGATCTGCC  
GCC**CGATCGCC**

ATGGGAACTGTGCCAAGCGGCCCTGGCGCCGGGGCCCTAAGGACCCCTTGCAGTGGCTCGGCTCCCCAC  
CAAGGGGCTCCTGCCCCAGCCCCAGCTCCAGCCCCAAGGAGCAGGGGGACCCCGCCAGGGCTCCAGGG  
CTACTCGGTGCTCAACAGCCTGGTGGGGCCTGCCTGCATCTTCTGCGGCCAGCATTGCCGCCACCCAA  
CTCGACCGGGAGCTGCGGCCGAGGAGATTGAAGAGCTGCAGGTCGCCTTCCAGGAGTTTGACCGAGACC  
GGGACGGCTACATTGGCTGCCGGGAGCTGGGTGCCTGCATGCGGACCCTGGGCTACATGCCACCGAGAT  
GGAGCTCATCGAGATCTACAACAAATCAGTGGCGGAAAGGTGGACTTTGAAGACTTCGTGGAGCTGATG  
GGCCCCAAGCTGCTGGCAGAGACGGCAGACATGATCGGTGTCGGGAGCTACGGGACGCCTTCCGGGAGT  
TCGACACCAATGGGGACGGCCGCATCAGCGTGGGCGAGCTCCGGGCGGCCCTCAAGGCCCTGCTGGGGGA  
GCGCCTCAGCCAGCGGGAGGTGGACGAGATCCTCCAGGACGTGGACCTCAATGGGGACGGTCTGGTCTGAC  
TTCGAAGAGTTTGTGCGAATGATGTCTCGG

**ACGCGT**ACGCGGGCCGCTCGAGCAGAACTCATCTCAGAAGAGGATCTGGCAGCAAATGATATCCTGGATT  
ACAAGGATGACGACGATAAGGTTTAA



[View online »](#)

**Protein Sequence:** >RC214556 representing NM\_016366  
Red=Cloning site Green=Tags(s)

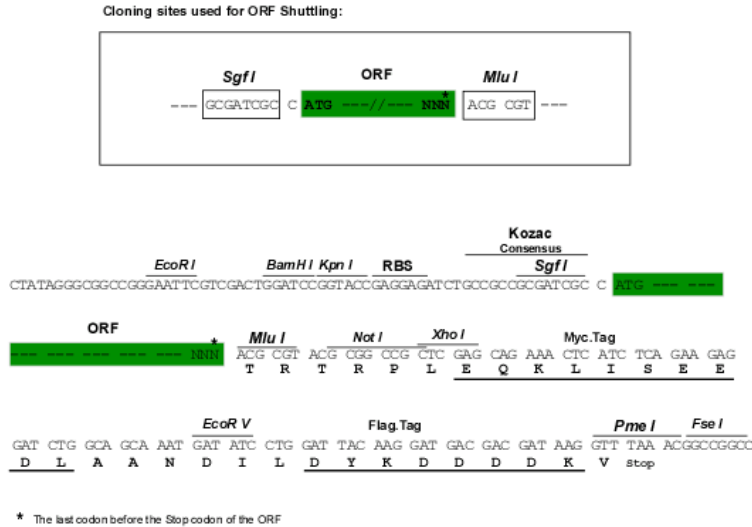
MGNCAKRPWRRGPKDPLQLWGSPPRGSCSPSSSPKEQGDPAAGVQGYSVLNSLVGPACIFLRPSIAATQ  
 LDRELPEEIEELQVAFQEFDRDRDGYIGCRELGACMRTLGYMPTMELIEISQQISGGKVFEDFVELM  
 GPKLLAETADMIGVRELDAFREFDNTNGGRISVGLRAALKALLGERLSQREVDEILQDVDLNGDGLVD  
 FEEFVRMSR

TRTRPLEQKLISEEDLAANDILDYKDDDDKV

**Chromatograms:** [https://cdn.origene.com/chromatograms/mk8030\\_b09.zip](https://cdn.origene.com/chromatograms/mk8030_b09.zip)

**Restriction Sites:** SgfI-MluI

**Cloning Scheme:**



**ACCN:** NM\_016366

**ORF Size:** 660 bp

**OTI Disclaimer:** The molecular sequence of this clone aligns with the gene accession number as a point of reference only. However, individual transcript sequences of the same gene can differ through naturally occurring variations (e.g. polymorphisms), each with its own valid existence. This clone is substantially in agreement with the reference, but a complete review of all prevailing variants is recommended prior to use. [More info](#)

**OTI Annotation:** This clone was engineered to express the complete ORF with an expression tag. Expression varies depending on the nature of the gene.

**Components:** The ORF clone is ion-exchange column purified and shipped in a 2D barcoded Matrix tube containing 10ug of transfection-ready, dried plasmid DNA (reconstitute with 100 ul of water).

**Reconstitution Method:**

1. Centrifuge at 5,000xg for 5min.
2. Carefully open the tube and add 100ul of sterile water to dissolve the DNA.
3. Close the tube and incubate for 10 minutes at room temperature.
4. Briefly vortex the tube and then do a quick spin (less than 5000xg) to concentrate the liquid at the bottom.
5. Store the suspended plasmid at -20°C. The DNA is stable for at least one year from date of shipping when stored at -20°C.

**RefSeq:** [NM\\_016366.3](#)

**RefSeq Size:** 986 bp

**RefSeq ORF:** 663 bp

**Locus ID:** 51475

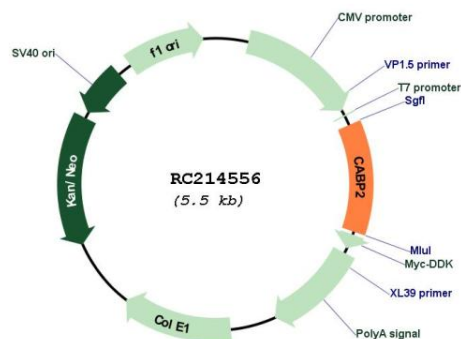
**UniProt ID:** [Q9NPB3](#)

**Cytogenetics:** 11q13.2

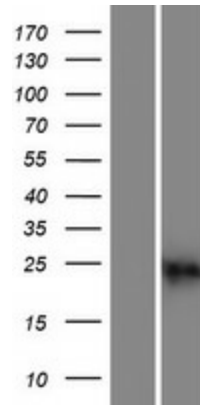
**MW:** 24.3 kDa

**Gene Summary:** This gene belongs to a subfamily of calcium binding proteins that share similarity to calmodulin. Like calmodulin, these family members can likely stimulate calmodulin-dependent kinase II and the protein phosphatase calcineurin. Calcium binding proteins are an important component of calcium mediated cellular signal transduction. Two transcript variants encoding different isoforms have been found for this gene. [provided by RefSeq, Jan 2016]

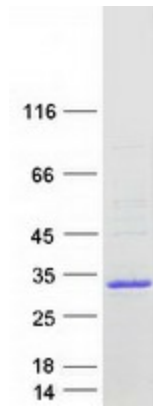
### Product images:



Circular map for RC214556



Western blot validation of overexpression lysate (Cat# [LY413985]) using anti-DDK antibody (Cat# [TA50011-100]). Left: Cell lysates from untransfected HEK293T cells; Right: Cell lysates from HEK293T cells transfected with RC214556 using transfection reagent MegaTran 2.0 (Cat# [TT210002]).



Coomassie blue staining of purified CABP2 protein (Cat# [TP314556]). The protein was produced from HEK293T cells transfected with CABP2 cDNA clone (Cat# RC214556) using MegaTran 2.0 (Cat# [TT210002]).