

Product datasheet for **RC214554**

RAP1GAP2 (NM_001100398) Human Tagged ORF Clone

Product data:

Product Type:	Expression Plasmids
Product Name:	RAP1GAP2 (NM_001100398) Human Tagged ORF Clone
Tag:	Myc-DDK
Symbol:	RAP1GAP2
Synonyms:	GARNL4; RAP1GA3
Mammalian Cell Selection:	Neomycin
Vector:	pCMV6-Entry (PS100001)
E. coli Selection:	Kanamycin (25 ug/mL)



[View online »](#)

ORF Nucleotide Sequence:

>RC214554 representing NM_001100398
 Red=Cloning site Blue=ORF Green=Tags(s)

TTTTGTAATACGACTCACTATAGGGCGGCCGGAATTCGTCGACTGGATCCGGTACCGAGGAGATCTGCC
 GCC**CGGATCGCC**

ATGTTTGGCCGGAAGCGCAGTGTCTCCTTTGGGGCTTCGGATGGATCGACAAGACCATGCTGGCAAGTC
 TGAAGGTCAAGAAGCAGGAGCTGGCCAACAGCTCGGATGCGACCCTCCAGACCGCCGCTCTCCCTCC
 TCTCACGGCACCTCCACCATGAAGTCGTCGGAGTTCTTTGAGATGCTGGAGAAAATGCAGGACGACTAT
 ATCCCATACCCAGCATCGACGAGGTTGTGGAGAAGGGAGGCCGTACCCTCAGGTCATCCTGCCACAGT
 TTGGGGGCTATTGGATCGAGGACCCGGAGAACGTGGCACCCCAACATCGCTGGGGAGCAGCATCTGTGA
 GGAGGAGGAAGAGGACAACCTCAGCCCCAACACATTTGGTACAAGCTCGAGTGAAGGGTGAAGCCAGG
 GCCTACCGGAGGCACTTCTGGGAAGGATCATCTAACTTTTACTGTACCGGCAGCAGCCTGGGGAAT
 TGATCCTGTCCGTCAAGTGCAGGAAGCAGAGGGGATCGAGTACCTCCGGGTATCCTTAGTCCAACT
 GAAGACGGTACATGAGCGGATCCCTTGGCTGGACTGAGCAAGCTTCCAGTGTCCCTCAGATTGCAAAG
 GCTTTCTGTGATGATGCAGTGGGACTGAGATTCATCCTGTCTGTACCCCAAGGCTCCCAAATGATTG
 TGTCTATGATGAGCATGAAGTCAACAACATTCAAATTCGGAGTCATTATCAAAAAGCCAGGACAGAC
 CCTGGAGGAGGACTATTTGGGAACAATGAGGAGAGCCAGCTTTTAAGGAGTCTTTGGACCTGCTGGGG
 GACACGATCACACTGCAGGATTTCAAAGTTTCCGAGGAGGCCTGGACGTGACCCACGGACAGACAGGGG
 TGGAAATCAGTGTACACAACATTCGGGGACAGGGAGATCATGTTTCACGTTTCCACAAAGCTGCCATTTAC
 CGACGGAGACGCCAGCAGCTCCAGAGAAAAGAGACACATTTGAAATGACATCGTGGCCATCATCTTCAA
 GAGGAAAACACGCCGTTTGTCCCAGACATGATAGCCTCCAATTTCTTACATGCCTACATCGTGTGCAGG
 TCGAGACCCACGGCACAGAGACCCCATCTACAAGGTCTCTGTCACTGCGCGGGAAGATGTGCCACCTT
 TGGTCCACCTCTGCCAGTCCCCCGTTTTCCAGAAGGGCCCGGAATTCAGGGAGTTTCTGCTCACCAAG
 CTCACCAATGCCGAGAACGCCTGCTGCAAGTCCGACAAGTTTGCAAAGCTGGAGGACCGGACCAGGGCTG
 CCCTCCTGGACAACCTTACGATGAGCTCCACGCCACACACAGGCCATGCTGGGACTGGGCCAGAGGA
 GGACAAGTTTGAATGGAGGCCACGGGGGTTCTGGAGTCTTTAAGAGGGCCATCCGCGTACGCAGC
 CACTCCATGGAGACCATGGTGGCGGCCAGAAGAAGTCCGACAGTGGGGGCATCCCTGGCAGCCTCAGCG
 GGGGCATCTCCACAACAGCATGGAGGTCACCAAGACCACCTTCTCGCTCCAGTGGTGGCGCAACGGT
 GAAGAACCAGTCACGGAGTCCCATCAAGCGACGCTCGGGGCTTCTCCCGCCTGCACACGGGCTCAGAA
 GGCCAGGGCGACAGCCGGGCACGATGTGACAGCACATCCAGCACCCCAAGACCCAGATGGTGGACT
 CCTCTCAGGAGATAAAGTCTGAGACCTCATCCAATCCCAGCTCTCCGAAATCTGCCCAACAAGGAGAA
 GCCCTTATGAAGTTGAAGGAAAACGGCCGTGCCATCTCCCGTCTCTCCAGCACAGCAGCGTCAAGC
 AGCACTGCAGGGGAGGGCGAGGCCATGGAGGAGGGCGACAGTGGGGGAGCCAGCCGTCCACGACCTCAC
 CCTTCAAGCAGGAGGTGTTTGTCTACAGCCCGTCCCGAGCAGCGAGAGCCAGCCTGGGGGAGCTGC
 CACCCCGATCATGAGCCGGAGTCCCACAGATGCCAAAAGCAGAAAACCTCCCGAGATCGAACCTGAAA
 TTCCGCTTTGACAAGCTCAGCCATGCCAGCTCTGGTGGGGTAC

ACGCGTACGCGGCCGCTCGAGCAGAACTCATCTCAGAAGAGGATCTGGCAGCAAATGATATCCTGGATT
 ACAAGGATGACGACGATAAGGTTTAA

Protein Sequence: >RC214554 representing NM_001100398
Red=Cloning site Green=Tags(s)

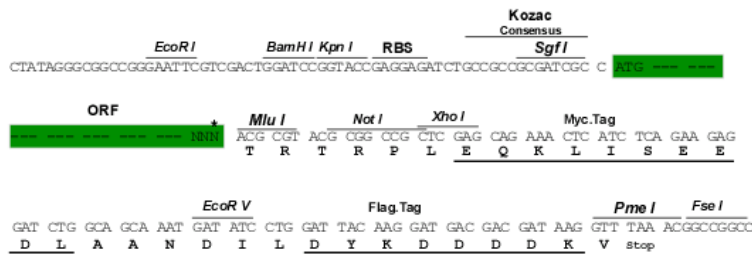
MFGRKRSVSFGFGWIDKTMLASLKVKKQELANSSDATLPDRPLSPPLTAPPTMKSEFFEMLEKMQDDY
 IPYPSIDEVVEKGGPYQVILPQFGGYWIEDPENVTPTSLGSSICEEEEEEDNLSNPTFGYKLECKGEAR
 AYRRHFLGKDHNLNFYCTGSSLGNLILSVKCEEAEIEYLRVILRSKLTVHERIPLAGLSKLPSVPQIAK
 AFCDDAVGLRFNPVLYPKASQMIVSYDEHEVNNTFKFGVIYQKARQTELEELFGNNEESPAFKEFLDLLG
 DTITLQDFKGRGGLDVTHGQTGVESVYTTFRDREIMFHVSTKLPFTDGDAAQLQRKRHIGNDIVAIIFQ
 EENTPFVPMIASNFLHAYIVVQVETPGTETPSYKSVTAREDVPTFGPPLPSPVPVQKGPREFLLTK
 LTNAENACCKSDKFAKLEDRTAALLDNLHDELHAHTQAMLGLGPEEDKFENGHGGFLESFKRAIRVRS
 HSMETMVGQKKSHSGGIPGSLGGISHNSMEVTKTTFSPVVAATVKNQSRSPIKRRSGLFPRLLHTGSE
 GQGDSRARCDSTSSTPKTPDGGHSSQEISETSSNPSSPEICPNKEKPFMKLKENGRAISRSSSSTSSVS
 STAGEGEAMEEGDSGGSQPSTTSPFKQEVFVYSPSPSSPSLGAATPIIMSRSPDASKRNSPRSNLK
 FRFDKLSHASSGAGH

TRTRPLEQKLISEEDLAANDILDYKDDDDKV

Restriction Sites: SgfI-MluI

Cloning Scheme:

Cloning sites used for ORF Shuttling:



ACCN: NM_001100398

ORF Size: 2145 bp

OTI Disclaimer: The molecular sequence of this clone aligns with the gene accession number as a point of reference only. However, individual transcript sequences of the same gene can differ through naturally occurring variations (e.g. polymorphisms), each with its own valid existence. This clone is substantially in agreement with the reference, but a complete review of all prevailing variants is recommended prior to use. [More info](#)

OTI Annotation: This clone was engineered to express the complete ORF with an expression tag. Expression varies depending on the nature of the gene.

Components: The ORF clone is ion-exchange column purified and shipped in a 2D barcoded Matrix tube containing 10ug of transfection-ready, dried plasmid DNA (reconstitute with 100 ul of water).

Reconstitution Method:

1. Centrifuge at 5,000xg for 5min.
2. Carefully open the tube and add 100ul of sterile water to dissolve the DNA.
3. Close the tube and incubate for 10 minutes at room temperature.
4. Briefly vortex the tube and then do a quick spin (less than 5000xg) to concentrate the liquid at the bottom.
5. Store the suspended plasmid at -20°C. The DNA is stable for at least one year from date of shipping when stored at -20°C.

RefSeq: [NM_001100398.2](#)

RefSeq Size: 6635 bp

RefSeq ORF: 2148 bp

Locus ID: 23108

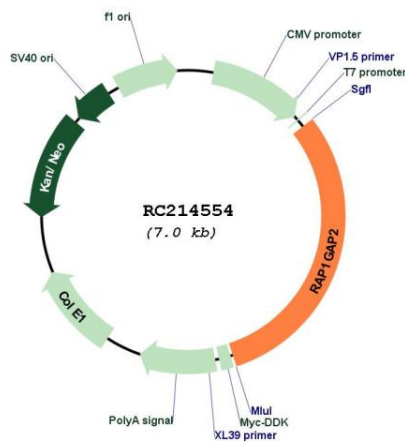
UniProt ID: [Q684P5](#)

Cytogenetics: 17p13.3

MW: 78.2 kDa

Gene Summary: This gene encodes a GTPase-activating protein that activates the small guanine-nucleotide-binding protein Rap1 in platelets. The protein interacts with synaptotagmin-like protein 1 and Rab27 and regulates secretion of dense granules from platelets at sites of endothelial damage. Multiple transcript variants encoding different isoforms have been found for this gene. [provided by RefSeq, Sep 2009]

Product images:



Circular map for RC214554