

## Product datasheet for **RC214553**

### **FZD3 (NM\_017412) Human Tagged ORF Clone**

#### **Product data:**

Product Type:	Expression Plasmids
Product Name:	FZD3 (NM_017412) Human Tagged ORF Clone
Tag:	Myc-DDK
Symbol:	FZD3
Synonyms:	Fz-3
Mammalian Cell Selection:	Neomycin
Vector:	pCMV6-Entry (PS100001)
E. coli Selection:	Kanamycin (25 ug/mL)



[View online »](#)

**ORF Nucleotide  
Sequence:**

>RC214553 representing NM\_017412  
 Red=Cloning site Blue=ORF Green=Tags(s)

TTTTGTAATACGACTCACTATAGGGCGGCCGGAATTCGTCGACTGGATCCGGTACCGAGGAGATCTGCC  
 GCC**CGGATCGCC**

ATGGCTATGACTTGGATTGTCTTCTCTTTGGCCCTTACTGTGTTTCATGGGGCATATAGTGGGCACA  
 GTTTGTTTTCTTGGAACCTATTACCTTGAGGATGTGCCAAGATTTGCCTTATAACTACTCTTCATGCC  
 TAATCTTCTGAATCATTATGACCAACAGACAGCAGCTTTGGCAATGGAGCCATCCACCCTATGGTGAAT  
 CTGGATTGTTCTCGGATTTCCGGCCTTTTCTTTGTGCACTCTACGCTCTATTTGTATGGAATATGGAC  
 GTGTCACACTTCCTGTCGTAGGCTGTGTGAGCGGGCTTACAGTGAGTGTTCGAAGCTCATGGAGATGTT  
 TGGTGTTCCTGGCCTGAAGATATGGAATGCAGTAGGTTCCAGATTGTGATGAGCCATATCCTCGACTT  
 GTGGATCTGAATTTAGCTGGAGAACCAACTGAAGGAGCCCCAGTGGCAGTGCAGAGAGACTATGGTTTTT  
 GGTGTCCCGAGAGTTAAAAATTGATCCTGATCTGGGTTATTCTTTTCTGCATGTGCGTGATTGTTACC  
 TCCTTGTCCAAAATGTACTTCAGAAGAGAAGAACTGTCAATTTGCTCGCTATTTTCATAGGATTGATTCA  
 ATCATTTGCCTCTCGGCCACATTGTTTACTTTTTTAACTTTTTTGATTGATGTCACAAGATTCCGTTATC  
 CTGAAAGGCCTATTATATTTTATGCAGTCTGCTACATGATGGTATCCTTAATTTTCTTCATTGGATTTTT  
 GCTTGAAGATCGAGTAGCCTGCAATGCATCCATCCCTGCACAATAAAGGCTTCCACAGTGACACAAGGA  
 TCTCATAATAAAGCCTGTACCATGCTTTTTATGATACTCTATTTTTTACTATGGCTGGCAGTGTATGGT  
 GGGTAATCTTACCATCACATGGTTTTTACGAGCTGTGCCAAAGTGGGGTAGTGAAGCTATTGAGAAGAA  
 AGCATTGCTGTTTACGCCAGTGCATGGGGCATCCCCGGAACCTAACCATCATCCTTTTAGCGATGAAT  
 AAAATTGAAGTGACAATATTAGTGGCGTGTGTTTTGTTGGCCTACGATGTTGATGCATTGAGATATT  
 TTGTTCTTGTCCCCTCTGCCTGTATGTGGTAGTTGGGTTTTCTCTCTTCTTAGCTGGCATTATATCCCT  
 AAACAGAGTTCGAATTGAGATTCCATTAGAAAAGGAGAACCAAGATAAAATTAGTGAAGTTTATGATCCGG  
 ATCGGTGTTTTAGCATTCTTTATCTCGTACCCTCTGGTTGTAATTGGATGCTACTTTTATGAGCAAG  
 CTTACCGGGGCATCTGGGAAACAACGTGGATACAAGAACGCTGCAGAGAATATCACATCCATGTCCATA  
 TCAGGTTACTCAAATGAGTCGTCCAGACTTGATTCTTTCTGATGAAATACCTGATGGCTCTCATAGTT  
 GGCATTCCTCTGTATTTTGGGTTGGAAGCAAAAAGACATGCTTTGAATGGGCCAGTTTTTTTTCATGGTC  
 GTAGGAAAAAAGAGATAGTGAATGAGAGCCGACAGGACTCCAGGAACCTGATTTGCTCAGTCTCTCTCT  
 GAGGGATCCAAATACTCCTATCATAAGAAAGTCAAGGGAACTTCCACTCAAGGAACATCCACCCATGCT  
 TCTTCAACTCAGCTGGCTATGGTGGATGATCAAAGAAGCAAAGCAGGAAGCATCCACAGCAAAGTGAGCA  
 GCTACCACGGCAGCCTCCACAGATCACGTGATGGCAGGTACACGCCCTGCAGTTACAGAGGAATGGAGGA  
 GAGACTACCTCATGGCAGCATGTCACGACTAACAGATCACTCCAGGCATAGTAGTTCTCATCGGCTCAAT  
 GAACAGTCACGACATAGCAGCATCAGAGATCTCAGTAATAATCCCATGACTCATATCACACATGGCACCA  
 GCATGAATCGGGTTATTGAAGAAGATGGAACCAAGTGTCT

**ACGCGT**ACGCGGGCCGCTCGAGCAGAACTCATCTCAGAAGAGGATCTGGCAGCAAATGATATCCTGGATT  
 ACAAGGATGACGACGATAAGGTTTAA

**Protein Sequence:** >RC214553 representing NM\_017412  
Red=Cloning site Green=Tags(s)

MAMTWIVFSLWPLTVFMGHIGGHSLSFCEPITLRMCQDLPYNTTFMPNLLNHYDQQTAAALAMEPFHPMVN  
 LDCSRDFRPFLCALYAPICMEYGRVTLPCRRLCQRAYSECSKLMEMFGVPWPEDECSRFPDCDEPYPRL  
 VDLNLAGEPTEGAPVAVQRDYGFWCPRELKIDPDLGYSFLHVRDCSPPCPNMYFRREELSFARYF IGLIS  
 IICLSATLFTFL TFLIDVTRFRYPERPIIFYAVCYMMVSLIFFIGFLLIEDRVACNASIPAQYKASTVTQG  
 SHNKACTMLFMILYFFTMAGSVVWVILITITWFLAAVPKWGSEAIEKKALLFHASAWGIPGTLTIILLAMN  
 KIEGDNISGVCFVGLYDVDALRYFVLAFLCLYVVVGVSLLLAGIISLNRVRIEIPLEKENQDKLVKFMIR  
 IGVFSILYLVP LLVVIGCYFYEQA YRGIWETT W I QERCREYHIPCYPYQVTQMSRPDLILFLMKYLMALIV  
 GIPSVFWVGSKKTCEWASFFHGRRKKEIVNESRQVLQEPDFAQSLLRDPNTPIIRKSRGTSTQGTSTHA  
 SSTQLAMVDDQRSKAGSIHRSKSVSYHGLHRSRDGRYTPCSYRGMEEERLPHGMSRLTDHSRHSSSHRLN  
 EQSRHSSIRDLSNNPMTHITHGTSMNRVIEEDG TSA

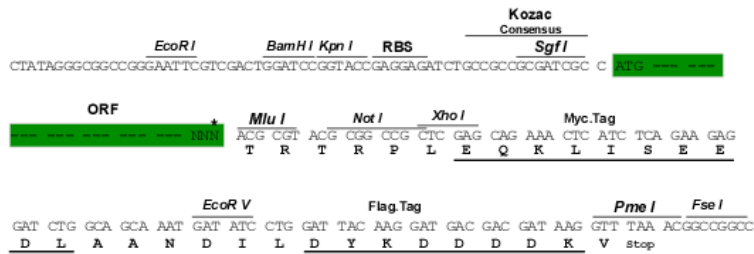
TRTRPLEQKLISEEDLAANDILDYKDDDDKV

**Chromatograms:** [https://cdn.origene.com/chromatograms/mg4775\\_c01.zip](https://cdn.origene.com/chromatograms/mg4775_c01.zip)

**Restriction Sites:** Sgfl-MluI

**Cloning Scheme:**

Cloning sites used for ORF Shuttling:



\* The last codon before the Stop codon of the ORF

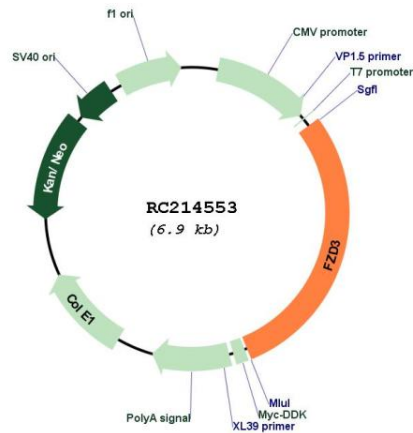
**ACCN:** NM\_017412

**ORF Size:** 1998 bp

<b>OTI Disclaimer:</b>	Due to the inherent nature of this plasmid, standard methods to replicate additional amounts of DNA in E. coli are highly likely to result in mutations and/or rearrangements. Therefore, OriGene does not guarantee the capability to replicate this plasmid DNA. Additional amounts of DNA can be purchased from OriGene with batch-specific, full-sequence verification at a reduced cost. Please contact our customer care team at <a href="mailto:custsupport@origene.com">custsupport@origene.com</a> or by calling 301.340.3188 option 3 for pricing and delivery.
	The molecular sequence of this clone aligns with the gene accession number as a point of reference only. However, individual transcript sequences of the same gene can differ through naturally occurring variations (e.g. polymorphisms), each with its own valid existence. This clone is substantially in agreement with the reference, but a complete review of all prevailing variants is recommended prior to use. <a href="#">More info</a>
<b>OTI Annotation:</b>	This clone was engineered to express the complete ORF with an expression tag. Expression varies depending on the nature of the gene.
<b>Components:</b>	The ORF clone is ion-exchange column purified and shipped in a 2D barcoded Matrix tube containing 10ug of transfection-ready, dried plasmid DNA (reconstitute with 100 ul of water).
<b>Reconstitution Method:</b>	<ol style="list-style-type: none"> <li>1. Centrifuge at 5,000xg for 5min.</li> <li>2. Carefully open the tube and add 100ul of sterile water to dissolve the DNA.</li> <li>3. Close the tube and incubate for 10 minutes at room temperature.</li> <li>4. Briefly vortex the tube and then do a quick spin (less than 5000xg) to concentrate the liquid at the bottom.</li> <li>5. Store the suspended plasmid at -20°C. The DNA is stable for at least one year from date of shipping when stored at -20°C.</li> </ol>
<b>Note:</b>	Plasmids are not sterile. For experiments where strict sterility is required, filtration with 0.22um filter is required.
<b>RefSeq:</b>	<a href="#">NM_017412.4</a>
<b>RefSeq Size:</b>	3933 bp
<b>RefSeq ORF:</b>	2001 bp
<b>Locus ID:</b>	7976
<b>UniProt ID:</b>	<a href="#">Q9NPG1</a>
<b>Cytogenetics:</b>	8p21.1
<b>Domains:</b>	FRI, Frizzled
<b>Protein Families:</b>	Druggable Genome, GPCR, Transmembrane
<b>Protein Pathways:</b>	Basal cell carcinoma, Colorectal cancer, Melanogenesis, Pathways in cancer, Wnt signaling pathway
<b>MW:</b>	76.1 kDa

**Gene Summary:**

This gene is a member of the frizzled gene family. Members of this family encode seven-transmembrane domain proteins that are receptors for the wingless type MMTV integration site family of signaling proteins. Most frizzled receptors are coupled to the beta-catenin canonical signaling pathway. The function of this protein is unknown, although it may play a role in mammalian hair follicle development. Alternative splicing results in multiple transcript variants. This gene is a susceptibility locus for schizophrenia. [provided by RefSeq, Dec 2010]

**Product images:**


Circular map for RC214553