

Product datasheet for RC214551L1

DEFB126 (NM_030931) Human Tagged Lenti ORF Clone

Product data:

Product Type:	Expression Plasmids
Product Name:	DEFB126 (NM_030931) Human Tagged Lenti ORF Clone
Tag:	Myc-DDK
Symbol:	DEFB126
Synonyms:	bA530N10.1; C20orf8; DEFB-26; DEFB26; hBD-26; HBD26
Mammalian Cell Selection:	None
Vector:	pLenti-C-Myc-DDK (PS100064)
E. coli Selection:	Chloramphenicol (34 ug/mL)
ORF Nucleotide Sequence:	The ORF insert of this clone is exactly the same as(RC214551).
Restriction Sites:	SgfI-MluI
Cloning Scheme:	

Cloning sites used for ORF Shuttling:



* The last codon before the Stop codon of the ORF.

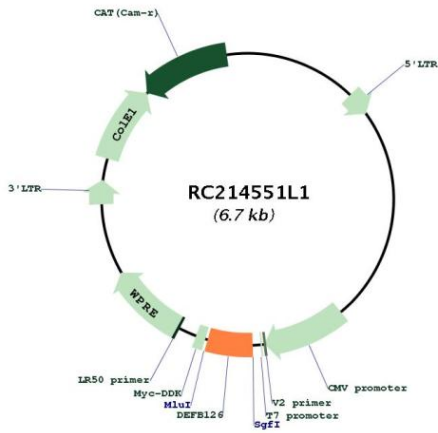
ACCN:	NM_030931
ORF Size:	333 bp



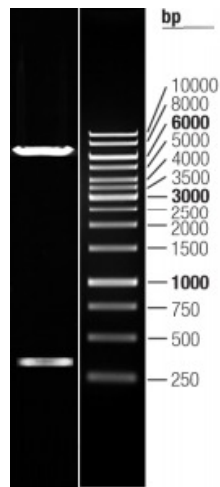
[View online »](#)

OTI Disclaimer:	The molecular sequence of this clone aligns with the gene accession number as a point of reference only. However, individual transcript sequences of the same gene can differ through naturally occurring variations (e.g. polymorphisms), each with its own valid existence. This clone is substantially in agreement with the reference, but a complete review of all prevailing variants is recommended prior to use. More info
OTI Annotation:	This clone was engineered to express the complete ORF with an expression tag. Expression varies depending on the nature of the gene.
Components:	The ORF clone is ion-exchange column purified and shipped in a 2D barcoded Matrix tube containing 10ug of transfection-ready, dried plasmid DNA (reconstitute with 100 ul of water).
Reconstitution Method:	<ol style="list-style-type: none">1. Centrifuge at 5,000xg for 5min.2. Carefully open the tube and add 100ul of sterile water to dissolve the DNA.3. Close the tube and incubate for 10 minutes at room temperature.4. Briefly vortex the tube and then do a quick spin (less than 5000xg) to concentrate the liquid at the bottom.5. Store the suspended plasmid at -20°C. The DNA is stable for at least one year from date of shipping when stored at -20°C.
RefSeq:	NM_030931.2
RefSeq Size:	413 bp
RefSeq ORF:	336 bp
Locus ID:	81623
UniProt ID:	Q9BYW3
Cytogenetics:	20p13
Protein Families:	Protease, Secreted Protein, Transmembrane
MW:	10 kDa
Gene Summary:	Defensins are cysteine-rich cationic polypeptides that are important in the immunologic response to invading microorganisms. The antimicrobial protein encoded by this gene is secreted and is a member of the beta defensin protein family. Beta defensin genes are found in several clusters throughout the genome, with this gene mapping to a cluster at 20p13. The encoded protein is highly similar to an epididymal-specific secretory protein (ESP13.2) from cynomolgus monkey. Mutation of this gene is associated with impaired sperm function. [provided by RefSeq, Nov 2014]

Product images:



Circular map for RC214551L1



Double digestion of RC214551L1 using SgfI and MluI