

Product datasheet for **RC214542**

RGS11 (NM_003834) Human Tagged ORF Clone

Product data:

Product Type:	Expression Plasmids
Product Name:	RGS11 (NM_003834) Human Tagged ORF Clone
Tag:	Myc-DDK
Symbol:	RGS11
Synonyms:	RS11
Mammalian Cell Selection:	Neomycin
Vector:	pCMV6-Entry (PS100001)
E. coli Selection:	Kanamycin (25 ug/mL)



[View online »](#)

ORF Nucleotide Sequence:

>RC214542 representing NM_003834
 Red=Cloning site Blue=ORF Green=Tags(s)

TTTTGTAATACGACTCACTATAGGGCGGCCGGAATTCGTCGACTGGATCCGGTACCGAGGAGATCTGCC
 GCC**CGGATCGCC**

ATGGAGCGGGTGGTCGTGAGCATGCAGGACCCCGACCAGGGCGTGAAGATGCGGAGCCAGCGCTGTGG
 TCACCGTCATTCCCCACGCGGTGACAGGCAGCAGCGTCGTGCAAGTGGTTGGCCAGAAGTTCTGCGTCTC
 GGAGGAGGAGCCCTGCACCTGGGCGCCGTCCTGGTGCAGCATGGCTACATCTACCCGCTGCGCGACCCC
 CGTAGCCTCATGCTCCGGCCAGACGAGACGCCCTACAGGTTCCAGACCCGTAATTCTGGACAAGTACCC
 TGAGGCCGGTGCAGAGCTGGACTATGCCATCTACCTGGCCAAGAAGAACATCCGAAAACGGGGACCCCT
 GGTGGATTATGAGAAGGACTGCTATGACCGCTACACAAGAAGATCAACCACGCATGGGACTGTGTGCTG
 ATGCAGGCGAGGAGCAGCTGAGGGCAGCAAGCAGCGCAGCAAGGGGGACAGGCTGTCATTGCGTGCC
 AGGAGCAGACCTACTGGCTGGTGAACAGGCCCCCGCCGGGGCCCGGATGTGCTGGAGCAGGGTCCAGG
 GCGGGGATCCTGCGCTGCCAGCCGTGTGCTCATGACCAAGAGTGCAGATTTCCATAAGCGGGAGATCGAG
 TACTTCAGGAAAGCGCTGGGCAGGACCCGAGTGAAGTCCCTCCGTCTGCCTTGAGGCGTACCTGAGTTCT
 GCGGCCAGCGTGGACCCACGATCCCCTCGTGTGGGGTGCCTGCCAGCAATCCCTGGATCTCAGACAA
 TGACGCCTACTGGGTGATGAATGCCCCACGGTGGCTGCCCCACGAAGCTCCGTGTGGAGAGATGGGGC
 TTCAGTTCGGGAGCTCCTGGAGGACCCGTTGGGGCGGGCCACTTCATGGACTTTCTGGGAAAGGAGT
 TCAGTGGAGAAAACCTCAGTTCCTGGGAGGCATGTGAGGAGCTTCGATATGGAGCGCAGGCCAGGTCCC
 CACCCTGGTGGATGCCGTGTACGAGCAGTTCCTGGCCCCGGAGCTGCCACTGGGTCAACATCGACAGC
 CGGACCATGGAGCAGACCCTGGAGGGGCTGCGCCAGCCCCACCGCTATGTCTGGATGACGCCAGCTGC
 ACATATACATGCTCATGAAGAAGGACTCCTACCAAGTTCTCTGAAGTCTGACATGTACAAGGCCCTCCT
 GGCAGAGGCTGGGATCCCGCTGGAGATGAAGAGACGCGTGTCCCGTTTACGTGGAGGCCACGGCACTCG
 AGCCCCAGCCCTGCACTCCTCCACCCCTGTGGAGCCACAGCGGCTTGTGGCCCTGGGGTGGAGATG
 GGTGGCC

AG**CGGACCG**ACGCGTACGCGGCCGCTCGAGCAGAACTCATCTCAGAAGAGGATCTGGCAGCAAATGATATCC
 TGGATTACAAGGATGACGACGATAAGGTTAA

Protein Sequence:

>RC214542 representing NM_003834
 Red=Cloning site Green=Tags(s)

MERVVSMQDPDQGVKMRSQRLLVTVIPHAVTGSDDVVQWLAQKFCVSEEEALHLGAVLVQHGYIYPLRDP
 RSLMLRPDETPYRFQTPYFWTSTLRPAEELDYAIYLAKKNIRKRGTLVDYEKDCYDRLHKKINHAWDLVL
 MQAREQLRAAKQRSKGDRLLVIACQEQTWLVNRPPPGAPDVLEQGPGRGSCAASRVLMTKSADFHKREIE
 YFRKALGRTRVKSSVLEAYLSFCGQRGPHDPLVSGCLPSNPWISDNDAYWWMNAPTVAAPTKLRRVERWG
 FSFRELLEDVPGRAHFMDFLGKEFSGENLSFWEACEELRYGAQAQVPTLVDAVYEQFLAPGAAHWVNIDS
 RTMEQTLRQPHRYVLDQAQLHIYMLMKKDSYPRFLKSDMYKALLAEAGIPLMKRRVFPFTWRPRHS
 SPSBALLPTPVEPTAACGPGGGDQVA

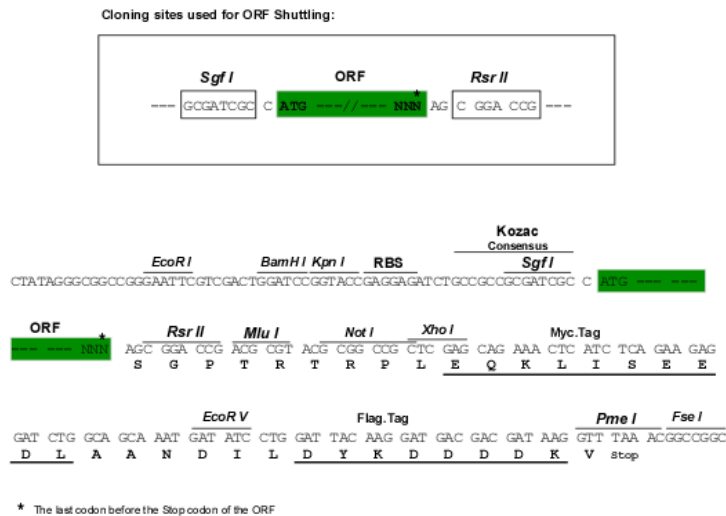
SGPTRRRLEQKLISEEDLAANDILDYKDDDDKV

Chromatograms:

https://cdn.origene.com/chromatograms/ja1408_d10.zip

Restriction Sites:

Sgfl-RsrII

Cloning Scheme:


ACCN: NM_003834

ORF Size: 1338 bp

OTI Disclaimer: The molecular sequence of this clone aligns with the gene accession number as a point of reference only. However, individual transcript sequences of the same gene can differ through naturally occurring variations (e.g. polymorphisms), each with its own valid existence. This clone is substantially in agreement with the reference, but a complete review of all prevailing variants is recommended prior to use. [More info](#)

OTI Annotation: This clone was engineered to express the complete ORF with an expression tag. Expression varies depending on the nature of the gene.

Components: The ORF clone is ion-exchange column purified and shipped in a 2D barcoded Matrix tube containing 10ug of transfection-ready, dried plasmid DNA (reconstitute with 100 ul of water).

Reconstitution Method:

1. Centrifuge at 5,000xg for 5min.
2. Carefully open the tube and add 100ul of sterile water to dissolve the DNA.
3. Close the tube and incubate for 10 minutes at room temperature.
4. Briefly vortex the tube and then do a quick spin (less than 5000xg) to concentrate the liquid at the bottom.
5. Store the suspended plasmid at -20°C. The DNA is stable for at least one year from date of shipping when stored at -20°C.

RefSeq: [NM_003834.3](#)

RefSeq Size: 2384 bp

RefSeq ORF: 1341 bp

Locus ID: 8786

UniProt ID: [O94810](#)

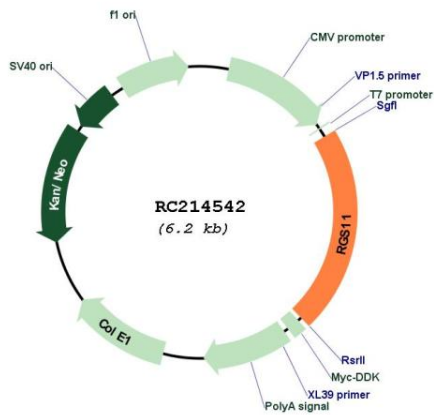
Cytogenetics: 16p13.3

Protein Families: Druggable Genome

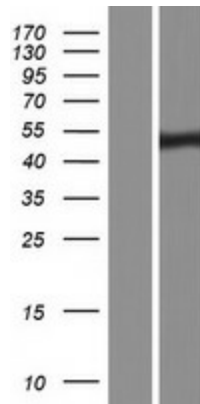
MW: 50.5 kDa

Gene Summary: The protein encoded by this gene belongs to the RGS (regulator of G protein signaling) family. Members of the RGS family act as GTPase-activating proteins on the alpha subunits of heterotrimeric, signal-transducing G proteins. This protein inhibits signal transduction by increasing the GTPase activity of G protein alpha subunits, thereby driving them into their inactive GDP-bound form. Alternative splicing occurs at this locus and four transcript variants encoding distinct isoforms have been identified. [provided by RefSeq, Nov 2013]

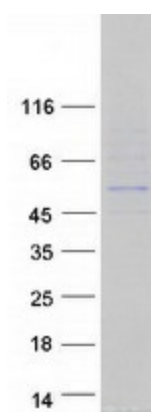
Product images:



Circular map for RC214542



Western blot validation of overexpression lysate (Cat# [LY418405]) using anti-DDK antibody (Cat# [TA50011-100]). Left: Cell lysates from untransfected HEK293T cells; Right: Cell lysates from HEK293T cells transfected with RC214542 using transfection reagent MegaTran 2.0 (Cat# [TT210002]).



Coomassie blue staining of purified RGS11 protein (Cat# [TP314542]). The protein was produced from HEK293T cells transfected with RGS11 cDNA clone (Cat# RC214542) using MegaTran 2.0 (Cat# [TT210002]).