

Product datasheet for RC214540

KCNH3 (NM_012284) Human Tagged ORF Clone

Product data:

Product Type:	Expression Plasmids
Product Name:	KCNH3 (NM_012284) Human Tagged ORF Clone
Tag:	Myc-DDK
Symbol:	KCNH3
Synonyms:	BEC1; ELK2; Kv12.2
Mammalian Cell Selection:	Neomycin
Vector:	pCMV6-Entry (PS100001)
E. coli Selection:	Kanamycin (25 ug/mL)
ORF Nucleotide Sequence:	>RC214540 representing NM_012284 Red=Cloning site Blue=ORF Green=Tags(s)

TTTTGTAATACGACTCACTATAGGGCGGCCGGAATTCGTCGACTGGATCCGGTACCGAGGAGATCTGCC
GCC**CGATCGCC**

ATGCCGGCCATGCGGGGCTCCTGGCGCCGAGAACACCTTCCTGGACACCATCGCTACGCGTTTCGACG
GCACGCACAGTAACCTTCGTGCTGGGCAACGCCAGGTGGCGGGGCTTTCCCGTGGTCTACTGCTCTGA
TGGCTTCTGTGACCTCACGGGCTTCTCCGGGCTGAGGTCATGCAGCGGGGCTGTGCTGCTCCTCCTT
TATGGCCAGACACCAGTGAGCTCGTCCGCAACAGATCCGCAAGGCCCTGGACGAGCACAAGGAGTTCA
AGGCTGAGCTGATCCTGTACCGAAGAGCGGGCTCCCGTTCGGTGTCTCCTGGATGTGATACCCATAAA
GAATGAGAAAGGGGAGGTGGCTCTTCTTAGTCTCTACAAGGACATCAGCGAAACCAAGAACCGAGGG
GGCCCCGACAGATGGAAGGAGACAGGTGGTGGCCGGCGCCGATATGGCCGGGCACGATCCAAAGGCTTCA
ATGCCAACCGGGCGGAGCCGGGCCGTGCTTACCACCTGTCCGGGCACCTGCAGAAGCAGCCCAAGGG
CAAGCACAAGCTCAATAAGGGGGTGTGGGGAGAAACCAAACTTGCCTGAGTACAAAGTAGCCGCCATC
CGGAAGTCGCCCTTATCCTGTTGCACTGTGGGCACTGAGAGCCACCTGGGATGGCTTATCCTGCTCG
CCACACTCTATGTGGCTGCACTGTGCCCTACAGCGTGTGTGTGAGCAGCAGCGGGAGCCAGTGGCCG
CCGCGGGCCCGCCAGCGTCTGTGACCTGGCCGTGGAGGTCTCTCATCCTTGACATTGTGCTGAATTT
CGTACCACATTCGTGTCGAAGTCGGGCCAGGTGGTGTGGCCCAAGTCCATTTGCCTCCACTACGTC
CCACCTGGTTCCTGCTGGATGTCATCGCAGCGCTGCCCTTTGACCTGCTACATGCCTTCAAGGTCAACGT
GTACTTCGGGGCCATCTGCTGAAGACGGTGGCCCTGCTGCGCCTGCTGCGCCTGCTTCCGCGGCTGGAC
CGGTACTCGCAGTACAGCGCCGTGGTGTGCACTGCTCATGGCCGTGTTCCGCCCTGCTCGCGCACTGGG
TCGCTGCGTCTGGTTTTACATTGGCCAGCGGGAGATCGAGAGCAGCGAATCCGAGCTGCTGAGATTGG
CTGGCTGCAGGAGCTGGCCCGGACTGGAGACTCCCTACTACCTGGTGGGCCGGAGGCCAGCTGGAGGG
AACAGCTCCGGCCAGAGTGACAACCTGCAGCAGCAGCAGCGAGGCCAACGGGACGGGGCTGGAGCTGCTGG
GCGGCCCGTCTGCGCAGCGCCTACATCACTCCCTTACTTTCGCACTCAGCAGCCTCACCAGCGTGGG
CTTCGGCAACGTGTCGCAACACGGACACCGAGAAGATCTTCTCCATCTGCACCATGCTCATCGCGCC



[View online »](#)

CTGATGCACGCGGTGGTGTGGGAACGTGACGGCCATCATCCAGCGCATGTACGCCCGCCGCTTTCTGT
 ACCACAGCCGCACGCGCGACCTGCGCGACTACATCCGCATCCACCGTATCCCCAAGCCCTCAAGCAGCG
 CATGCTGGAGTACTTCCAGGCCACTGGGCGGTGAACAATGGCATCGACACCACCGAGCTGCTGCAGAGC
 CTCCTGACGAGCTGCGCGCAGACATCGCCATGCACCTGCACAAGGAGGTCTGCAGTGCCACTGTTTG
 AGGCGGCCAGCCGCGCTGCCTGCGGGCACTGTCTTGGCCCTGCGGCCCGCCTTCTGCACGCCGGGCGA
 GTACCTCATCCACCAAGCGATGCCCTGCAGCCCTCTACTTTGTCTGCTTGCATCCATGGAGGTGCTC
 AAGGGTGGCACCGTCTCGCCATCCTAGGGAAGGGCGACCTGATCGGCTGTGAGTGCCTCCCGCGGGAGC
 AGGTGGTAAAGGCCAATGCCGACGTGAAGGGGCTGACGTACTGCGTCTGCAAGTGTCTGCAGCTGGCTGG
 CCTGCACGACAGCCTTGCCTGTACCCCGAGTTTGCCCGCGCTTCAGTCGTGGCCTCCGAGGGGAGCTC
 AGCTACAACCTGGGTGCTGGGGGAGGCTCTGCAGAGGTGGACACCAGCTCCCTGAGCGGCGACAATACCC
 TTATGTCCACGCTGGAGGAGAAGGAGACAGATGGGGAGCAGGGCCACCGTCTCCCGAGCCCGAGCTGA
 TGAGCCCTCCAGCCCTGCTGTCCCTGGCTGCACCTCCTATCCTCAGCTGCCAAGCTGCTATCCCCA
 CGTCGAACAGCACCCCGGCTCGTCTAGGTGGCAGAGGGAGGCCAGGCAGGGCAGGGGCTTTGAAAGGCTG
 AGGCTGGCCCTCTGCTCCCCACGGGCCCTAGAGGGGCTACGGTGCCTCCATGCCATGGAATGTGCC
 CCCAGATCTGAGCCCGAGGTAGTAGATGGCATTGAAGACGGCTGTGGCTCGGACCAGCCCAAGTTCTCT
 TTCCGCGTGGGCCAGTCTGGCCCGAATGTAGCAGCAGCCCTCCCTGGACCAGAGAGCGGCTGCTCA
 CTGTTCCCATGGGCCAGCGAGGCAAGGAACACAGACACTGGACAAGCTTCGGCAGGCGGTGACAGA
 GCTGTGACAGCAGGTGCTGCAGATGCGGGAAGGACTGCAGTCACTTCGCCAGGCTGTGCAGCTTGTCTG
 GCGCCCCACAGGGAGGGTCCGTGCCCTCGGGCATCGGGAGAGGGGCGGTGCCAGCCAGCACCTCCGGGC
 TTCTGCAGCCTCTGTGTGGACTGGGGCATCCTCCTACTGCCTGCAGCCCCAGCTGGCTGTCTT
 GAGTGGGACTTGGCCCCACCCTCGTCCGGGCCCTCCTCCCTCATGGACCCTGGCCCTGGGGTCCCCCA
 GCGTCTCAGAGCTCCCCCTGGCCTCGAGCCACAGCTTTCTGGACCTCCACCTCAGACTCAGAGCCCCCTG
 CCTCAGGAGACCTCTGCTGAGCCAGCACCCCTGCCTCCCTCCTCTCTGAGGAAGGGGCTAGGAC
 TGGGCCCGCAGAGCCTGTGAGCCAGGCTAGGCTACCAGCACTGGAGAGCCCCACCAGGGTCAAGGGGC
 CTGGCCTTGCCTGGGACCCCCACAGCCTGGAGATGGTGTATTGGCTGCCATGGCTCTGGCACAGTCC
 AGTGGACCAGGAAGAAGGCACAGGGGTC

ACGCGTACGCGGCCGCTCGAGCAGAACTCATCTCAGAAGAGGATCTGGCAGCAAATGATATCCTGGATT
 ACAAGGATGACGACGATAAGGTTTAA

Protein Sequence:

>RC214540 representing NM_012284
 Red=Cloning site Green=Tags(s)

MPAMRGLLAPQNTFLDTIATRFDGTHSNFVLGNAQVAGLFPVVYCSDFCDLTGFSRAEVMQRGCACSF
 YGPDTSELVRQQIRKALDEHKEFKAELILYRKSGLPFWCLLDVPIKNEKGEVALFLVSHKDISETKNRG
 GPDRWKETGGRRRYGRARSKGFNANRRRSRAVLYHL SGHLQKQPKGKHLNKGVFGEKPNLPEYKVA
 RKSPFILLHCGALRATWDGFILLATLYAVTVPSVVCSTAREPSAARGPPSVCDLAVEVLFILDIVLNF
 RTTFVSKSGQVVFAPKSI CLHYVTTWFLLDVIAALPFDLLHAFKVN VYFGAHL LKT VRLRLRLRLPRLD
 RYSQYSAVVLTLLMAVFA LLAHWVACVWFYIGQREIESESELPEIGWLQELARRLET PYYLVGRRPAGG
 NSSGQSDNCSSSSEANGTGLELLGGPSLR SAYITSLYFALSSLSVFGNVSANTDTEKIFSICTMLIGA
 LMHAVVFGNVTAI IQRM YARRFLYHSRTRDLRDIYIRIHRIPKPLKQRMLEYFQATWAVNNGIDTTELLQS
 LPDEL RADIAMHLHKEVLQLPLFEAASRGCLRALSLALRPAFC TPGEYL IHQGDALQALYFVCSGMEVL
 KGGTVLAILGKGD LIGCELPREQVVKANADV KGLTYCVLQCLQLAGLHDSLALYPEFAPRFSRGLRGEL
 SYNLGAGGSAEVD TSSLSGDNTLMSTLEEKETDGEQGP TVSPAPADEPSSPLLSPGCTSSSAKLLSP
 RRTAPRRLGGRGRPRGALKA EAGPSAPPRALEGLR LPPMPWNVPPDLSPRVVDGIEDGCGSDQPKFS
 FRVQSGPECSSSPGPESGLLTVPHGPSEARNTD TLDKLRQAVTELSEQVLQMREGLQSLRQAVQLVL
 APHREGPCPRASGEGPCASTSGLLQPLCVDTGASSYCLQPPAGSVL SGTWPHPRPGPPPLMAPWPWGPP
 ASQSSPWPRATAFWTSTSDSEPPASGDLCSEPSTPASPPPSEEGARTGPAEPVSQAEATSTGEP
 PPGSGGLALPWPDPHSLEMVLI GCHGSGTVQWTQEETGV

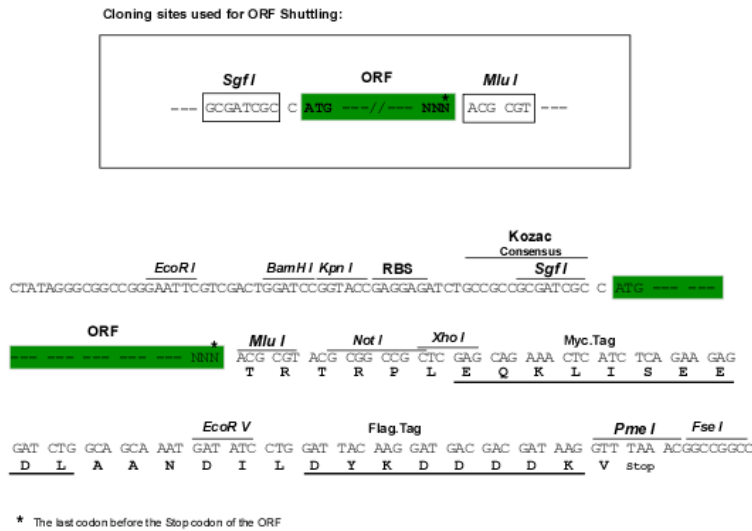
TRTRPLEQKLISEEDLAANDILDYKDDDDKV

Chromatograms:

https://cdn.origene.com/chromatograms/mk8115_c03.zip

Restriction Sites: SgfI-MluI

Cloning Scheme:



ACCN: NM_012284

ORF Size: 3249 bp

OTI Disclaimer: Due to the inherent nature of this plasmid, standard methods to replicate additional amounts of DNA in E. coli are highly likely to result in mutations and/or rearrangements. Therefore, OriGene does not guarantee the capability to replicate this plasmid DNA. Additional amounts of DNA can be purchased from OriGene with batch-specific, full-sequence verification at a reduced cost. Please contact our customer care team at custsupport@origene.com or by calling 301.340.3188 option 3 for pricing and delivery.

The molecular sequence of this clone aligns with the gene accession number as a point of reference only. However, individual transcript sequences of the same gene can differ through naturally occurring variations (e.g. polymorphisms), each with its own valid existence. This clone is substantially in agreement with the reference, but a complete review of all prevailing variants is recommended prior to use. [More info](#)

OTI Annotation: This clone was engineered to express the complete ORF with an expression tag. Expression varies depending on the nature of the gene.

Components: The ORF clone is ion-exchange column purified and shipped in a 2D barcoded Matrix tube containing 10ug of transfection-ready, dried plasmid DNA (reconstitute with 100 ul of water).

Reconstitution Method:

1. Centrifuge at 5,000xg for 5min.
2. Carefully open the tube and add 100ul of sterile water to dissolve the DNA.
3. Close the tube and incubate for 10 minutes at room temperature.
4. Briefly vortex the tube and then do a quick spin (less than 5000xg) to concentrate the liquid at the bottom.
5. Store the suspended plasmid at -20°C. The DNA is stable for at least one year from date of shipping when stored at -20°C.

RefSeq: [NM_012284.3](#)

RefSeq Size: 3853 bp

RefSeq ORF: 3252 bp

Locus ID: 23416

UniProt ID: [Q9ULD8](#)

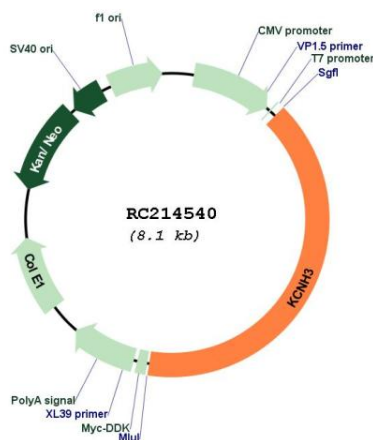
Cytogenetics: 12q13.12

Protein Families: Druggable Genome, Ion Channels: Potassium, Transmembrane

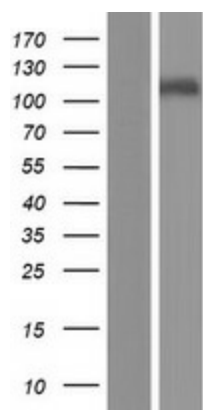
MW: 116.9 kDa

Gene Summary: The protein encoded by this gene is a voltage-gated potassium channel alpha subunit predominantly expressed in the forebrain. Studies in mice have found that cognitive function increases when this gene is knocked out. In humans, the encoded protein has been shown to be capable of binding glycoprotein 120 of the human immunodeficiency virus type 1 (HIV-1) envelope. Two transcript variants encoding different isoforms have been found for this gene. [provided by RefSeq, Sep 2015]

Product images:



Circular map for RC214540



Western blot validation of overexpression lysate (Cat# [LY415852]) using anti-DDK antibody (Cat# [TA50011-100]). Left: Cell lysates from untransfected HEK293T cells; Right: Cell lysates from HEK293T cells transfected with RC214540 using transfection reagent MegaTran 2.0 (Cat# [TT210002]).