

## Product datasheet for **RC214538**

### **TUB (NM\_177972) Human Tagged ORF Clone**

#### **Product data:**

Product Type:	Expression Plasmids
Product Name:	TUB (NM_177972) Human Tagged ORF Clone
Tag:	Myc-DDK
Symbol:	TUB
Synonyms:	rd5; RDOB
Mammalian Cell Selection:	Neomycin
Vector:	pCMV6-Entry (PS100001)
E. coli Selection:	Kanamycin (25 ug/mL)



[View online »](#)

**ORF Nucleotide Sequence:**

>RC214538 representing NM\_177972  
 Red=Cloning site Blue=ORF Green=Tags(s)

TTTTGTAATACGACTCACTATAGGGCGGCCGGAATTCGTCGACTGGATCCGGTACCGAGGAGATCTGCC  
 GCC**CGATCGCC**

ATGACTTCCAAGCCGATTCCGACTGGATTCCCTACAGTGTCTTAGATGATGAGGGCAGAAACCTGAGGC  
 AGCAGAAGCTTGATCGGCAGCGGCCCTGCTGGAGCAGAAGCAGAAGAAGAAGCGCCAGGAGCCCTGAT  
 GGTGCAGGCCAATGCAGATGGGCGGCCCGGAGCCGGCGGGCCCGCAGTCAGAGGAACAAGCCCCCTG  
 GTGGAGTCTACCTCAGCAGCAGTGGCAGCACCAGCTACCAAGTTCAAGAGGCCGACTCACTCGCCAGTG  
 TGCAGCTGGGAGCCACGCGCCCAACAGCACCAGCTTCAGCCAAGAGAACCAAGGCGGCAGCTACAGCAGG  
 GGGCCAGGGTGGCGCCGTAGGAAGGAGAAGAAGGAAAGCACAAAGGCACCAGCGGGCCAGCAGCACTG  
 GCAGAAGACAAGTCTGAGGCCAAAGGCCAGTGCAGATTCTGACTGTGGCCAGTCAGACCAGCCCAGG  
 ACGCAGGGGAGACGGCAGCTGGTGGGGGCAACGGCCAGCGGGCAGGATCTCCGTGCCACGATGCAGAG  
 GAAGGGCATCTCCAGCAGCATGAGCTTTGACGAGGATGAGGAGGATGAGGAGGAGAATAGCTCCAGCTCC  
 TCCAGCTAAATAGTAACACCCGCCAGCTCTGCTACTAGCAGGAAGTCCGTACGGGAGGCAGCCCTCAG  
 CCCCTAGCCCAACAGCTCCAGAGCAACCAGTGGACGTTGAGGTCCAGGATCTTGAGGAGTTTGCAGTGA  
 GCCGGCCCCCAGGGTATCACCATCAAATGCCGCATCACTCGGGACAAGAAAGGGATGGACCGGGGCATG  
 TACCCACCTACTTTCTGCACCTGGACCGTGGAGTGGGAAGAAGGTGTTCTCTCGCGGGAAGGAAGA  
 GAAAGAAGAGTAAACTTCCAATTACCTCATCTCTGTGGACCCAACAGACTTGTCTCGAGGAGGGGACAG  
 CTATATCGGAAACTGCGGTCCAACCTTGATGGGCACCAAGTTCACTGTTTATGACAATGGAGTCAACCT  
 CAGAAGGCCTCATCTCCACTTTGAAAAGTGGAACTTACGTCAGGAGCTGGCAGCTGTGTGCTACGAGA  
 CAAACGCTTAGGCTTCAAGGGCCCTCGGAAGATGAGCGTGATTGTCCAGGCATGAACATGGTTCATGA  
 GAGAGTCTCTATCCGCCCCCGCAACGAGCATGAGACACTGCTAGCACGCTGGCAGAATAAGAACACGGAG  
 AGTATCATCGAGCTGAAAAACAAGACACCTGTCTGGAATGATGACACACAGTCTTATGACTCAACTTCC  
 ATGGGCGCGTCACACAGGCCTCCGTGAAGAACTCCAGATCATCCATGGCAATGACCCGGACTACATCGT  
 GATGCAGTTTGGCCGGTAGCAGAGGATGTGTTACCATTGGATTACAACCTACCCGCTGTGTGCACTGCAG  
 GCCTTTGCCATTGCCCTGCCAGCTTCGACAGCAAGCTGGCGTGCAG

**ACGCGT**ACGCGGCCGCTCGAGCAGAAACTCATCTCAGAAGAGGATCTGGCAGCAAATGATATCTGGATT  
 ACAAGGATGACGACGATAAGGTTTAA

**Protein Sequence:**

>RC214538 representing NM\_177972  
 Red=Cloning site Green=Tags(s)

MTSKPHSDWIPYSVLDDEGRNLRQQLDRQRALLEQKQKKRQEPLMVQANADGRPRRRARQSEEQAPL  
 VESYLSSSGSTSYQVEADSLASVQLGATRPTAPASAKRTKAAATAGGQGAARKEKKGKHKGTSGPAAL  
 AEDKSEAQGPVQILTVGQSDHAQDAGETAAGGGERPSGQDLRATMQRKGISSMSFDEDEEENSSSS  
 SQLNSNTRPSSATSRKSVREAASAPSTAPEQPVDVEVQDLEEFALRPAPQGITIKCRITRDKKGMDRGM  
 YPTYFLHLDRDGGKVFLLAGRKRKSKTSNYLISVDPTDLSRGGDSYIGKLRNLMTGKFTVYDNGVNP  
 QKASSSTLESGLRQELAAVCYETNVLGFKGPRKMSVIVPGMMVHERVSI RPRNEHETLLARWQNKNT  
 SIIELQNKTPVWDDTQSYVLFHGRVTQASVKNFQIIHGNDPDYIVMQFGRVAEDVFTMDYNYPLCALQ  
 AFAIALSSFDSKLACE

**TRTRPLEQKLI**SEEDLAANDILDYKDDDDKV

**Chromatograms:**

[https://cdn.origene.com/chromatograms/mk8030\\_c01.zip](https://cdn.origene.com/chromatograms/mk8030_c01.zip)

**Restriction Sites:**

Sgfl-Mlul

**Cloning Scheme:**

**ACCN:** NM\_177972

**ORF Size:** 1518 bp

**OTI Disclaimer:** Due to the inherent nature of this plasmid, standard methods to replicate additional amounts of DNA in E. coli are highly likely to result in mutations and/or rearrangements. Therefore, OriGene does not guarantee the capability to replicate this plasmid DNA. Additional amounts of DNA can be purchased from OriGene with batch-specific, full-sequence verification at a reduced cost. Please contact our customer care team at [custsupport@origene.com](mailto:custsupport@origene.com) or by calling 301.340.3188 option 3 for pricing and delivery.

The molecular sequence of this clone aligns with the gene accession number as a point of reference only. However, individual transcript sequences of the same gene can differ through naturally occurring variations (e.g. polymorphisms), each with its own valid existence. This clone is substantially in agreement with the reference, but a complete review of all prevailing variants is recommended prior to use. [More info](#)

**OTI Annotation:** This clone was engineered to express the complete ORF with an expression tag. Expression varies depending on the nature of the gene.

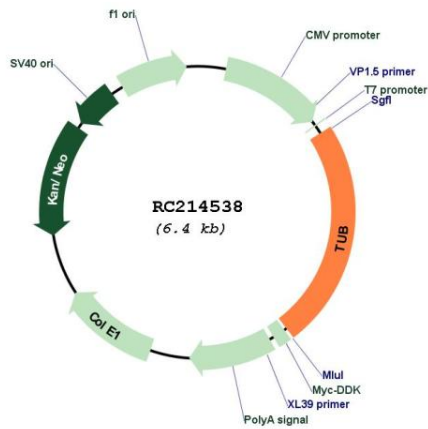
**Components:** The ORF clone is ion-exchange column purified and shipped in a 2D barcoded Matrix tube containing 10ug of transfection-ready, dried plasmid DNA (reconstitute with 100 ul of water).

- Reconstitution Method:**
1. Centrifuge at 5,000xg for 5min.
  2. Carefully open the tube and add 100ul of sterile water to dissolve the DNA.
  3. Close the tube and incubate for 10 minutes at room temperature.
  4. Briefly vortex the tube and then do a quick spin (less than 5000xg) to concentrate the liquid at the bottom.
  5. Store the suspended plasmid at -20°C. The DNA is stable for at least one year from date of shipping when stored at -20°C.

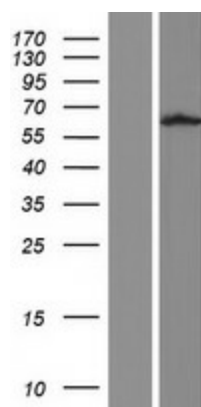
**RefSeq:** [NM\\_177972.3](#)  
**RefSeq Size:** 6172 bp  
**RefSeq ORF:** 1521 bp  
**Locus ID:** 7275  
**UniProt ID:** [P50607](#)  
**Cytogenetics:** 11p15.4  
**MW:** 55.5 kDa

**Gene Summary:** This gene encodes a member of the Tubby family of bipartite transcription factors. The encoded protein may play a role in obesity and sensorineural degradation. The crystal structure has been determined for a similar protein in mouse, and it functions as a membrane-bound transcription regulator that translocates to the nucleus in response to phosphoinositide hydrolysis. Two transcript variants encoding distinct isoforms have been identified for this gene. [provided by RefSeq, Jul 2008]

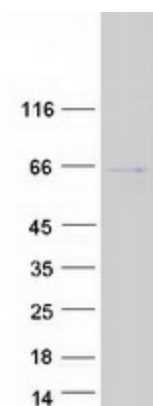
**Product images:**



Circular map for RC214538



Western blot validation of overexpression lysate (Cat# [LY406065]) using anti-DDK antibody (Cat# [TA50011-100]). Left: Cell lysates from untransfected HEK293T cells; Right: Cell lysates from HEK293T cells transfected with RC214538 using transfection reagent MegaTran 2.0 (Cat# [TT210002]).



Coomassie blue staining of purified TUB protein (Cat# [TP314538]). The protein was produced from HEK293T cells transfected with TUB cDNA clone (Cat# RC214538) using MegaTran 2.0 (Cat# [TT210002]).