

Product datasheet for **RC214537**

FYB1 (NM_001465) Human Tagged ORF Clone

Product data:

Product Type:	Expression Plasmids
Product Name:	FYB1 (NM_001465) Human Tagged ORF Clone
Tag:	Myc-DDK
Symbol:	FYB1
Synonyms:	ADAP; FYB; PRO0823; SLAP-130; SLAP130; THC3
Mammalian Cell Selection:	Neomycin
Vector:	pCMV6-Entry (PS100001)
E. coli Selection:	Kanamycin (25 ug/mL)



[View online »](#)

**ORF Nucleotide
Sequence:**

>RC214537 ORF sequence
 Red=Cloning site Blue=ORF Green=Tags(s)

TTTTGTAATACGACTCACTATAGGGCGGCCGGGAATTCGTGACTGGATCCGGTACCGAGGAGATCTGCC
 GCC**CGGATCGCC**

ATGGCGAAATATAACACGGGGGCAACCCGACAGAGGATGTCTCAGTCAATAGCCGACCCTTCAGAGTCA
 CAGGGCCAAACTCATCTTCAGGAATACAAGCAAGAAAGAACTTATTCAACAACCAAGGAAATGCCAGCCC
 TCCTGCAGGACCCAGCAATGTACCTAAGTTTGGGTCCCAAGCCACCTGTGGCAGTCAAACCTTCTTCT
 GAGGAAAAGCCTGACAAGGAACCAAGCCCCGTTTCTAAAGCCCACTGGAGCAGGCCAAAGATTCGGAA
 CACCAGCCAGCTTGACCACCAGAGACCCGAGGCGAAAGTGGGATTTCTGAAACCTGTAGCCCCAAGCC
 CATCAACTTGCCCAAAGAAGATTCCAAACCTACATTTCCCTGGCCTCCTGGAAACAAGCCATCTCTTAC
 AGTGTAACCAAGACCATGACTTAAAGCCACTAGGCCGAAATCTGGGCCTACTCCTCAACCTCAGAAA
 ATGAACAGAAGCAAGCGTTTCCCAAATTGACTGGGTTAAAGGAAATTTATGTCAGCATACAAGATCT
 TGAACCAAGCCCCTTCCCAAAACCCGCTTTGGCCAGAAGCCGCCCTAAGTACCGAGAACTCCCAT
 GAAGACGAAAGCCCATGAAGAATGTGTCTTCATCAAAAGGGTCCCAAGCTCCCTGGGAGTCAGGTCCA
 AAAGCGGCCCTTTAAACCCAGCAAGGGAAGACTCAGAAAATAAAGACCATGCAGGGGAGATTTCAAGTTT
 GCCCTTTCCTGGAGTGGTTTTGAAACCTGCTGCGAGCAGGGGAGGCCAGGTCTCTCAAAAAATGGTGAA
 GAAAAAAGGAAGATAGGAAGATAGATGCTGCTAAGAACCTTCCAGAGCAAAAATAATCAGGAAGAGT
 TGGCCTCAGGGACTCCTCCTGCCAGTTCCCTAAGGCCCTTCTAAGCTGACAGTGGGGGGGCCATGGGG
 CCAAAGTCAGGAAAAGGAAAAGGAGACAAGAATTCAGCCACCCGAAACAGAAGCCATTGCCTCCCTTG
 TTTACCTGGGTCCACCTCCACCAAAACCCAACAGACCACCAATGTTGACCTGACGAAATTCACAAAA
 CCTCTTCTGGAACAGTACTAGCAAAAGGCCAGACGTCTTACTCAACAACCTCCCTGCCACCACCTCCACC
 ATCCCATCCGGCCAGCCAACCACCATTTGCCAGCATCTCACCATACAACCACCAAGTCCCAAGCCTACCT
 CCCAGAAACATTAACCTCCGTTTGACCTAAAAAGCCCTGTCAATGAAGACAATCAAGATGGTGTACGC
 ACTCTGATGGTGTGAAATCTAGATGAGGAACAAGACAGTGAAGGAGAAAATATGAAGACATAGAAGC
 ATCCAAAGAAAGAGAGAAGAAAAGGAAAAGGAAGAAAAGAGAGTTAGAGCTGGAGAAAAGGAACAG
 AAAGAGAAAAGAAAAGAAACAAGAAATAAAGAAAGAAATTTAACTAACAGGCCCTATTCAAGTCATCC
 ATCTTGCAAAAGCTTGTGTGATGTCAAAGGAGGAAAAGATGAAGTGAAGTCAAGCAAGGAGAGCAAT
 TGAATCATCCGCATCACAGACAACCCAGAAGGAAAATGGTTGGCAGAACAGCAAGGGGTTTATATGGC
 TATATTAACAACCTGCTGTAGAGATTGACTATGATTCTTTGAACTGAAAAAGACTCTCTGGTGCCC
 CTTCAAGACCTATTGAAGATGACCAAGAAGTATATGATGATGTTGCAGAGCAGGATGATATTAGCAGCCA
 CAGTCAGAGTGGAGTGGAGGGATATCCCTCCACCACAGATGATGACATTTATGATGGGATTGAAGAG
 GAAGATGCTGATGATGGCTCCACACTACAGGTTCAAGAGAAGAGTAATACGTGGTCTGGGGGATTTTGA
 AGATGTTAAAGGGAAAAGATGACAGAAAAGAAAAGTATACGAGAGAAAACCTAAAGTCTCTGACTCAGACA
 TAATGAAGGTTTCACTTTCCCTGCTCCTCCTAAACAATTGGACATGGGAGATGAAGTTTACGATGATGTG
 GATACCTCTGATTTCCCTGTTTCATCAGCAGAGATGAGTCAAGGAACTAATTTGGAAAAGCTAAGACAG
 AAGAAAAGGACCTTAAGAAGCTAAAAAGCAGGAAAAGAAAAGAAAAGACTTCAGGAAAAATTTAATA
 TGATGGTGAAATTAGAGTCTATATTCAACTAAAGTTACAACCTCCATAACTTCTAAAAAGTGGGGAACC
 AGAGATCTACAGTAAAACCTGGTGAATCTCTAGAAGTTATACAACCACAGATGACACAAAAGTTCTCT
 GCAGAAATGAAGAAGGAAATATGGTTATGTCCTTCGGAGTTACCTAGCGGACAATGATGGAGAGATCTA
 TGATGATATTGCTGATGGCTGCATCTATGACAATGAC

ACGCGTACGCGGCCGCTCGAGCAGAACTCATCTCAGAAGAGGATCTGGCAGCAATGATATCCTGGATT
 ACAAGGATGACGACGATAAGGTTTAA

Protein Sequence: >RC214537 protein sequence
Red=Cloning site Green=Tags(s)

MAKYNTGGNPTEDVSVNSRPFRTGPNSSSGIQARKNLFNNQGNASPPAGPSNVPKFGSPKPPVAVKPSS
EEKPDKEPKPPFLKPTGAGQRFGTPASLTTRDPEAKVGFLKPVGPKPINLPKEDSKPTFPWPPGNKPSLH
SVNQDHDLKPLGPKSGTPPTSENEQQAFFKLTGVKGFMSASQDLEPKPLFPKPAFGQKPPNSTENSH
EDESMPKNVSSSKGSPAPLGVRSKSGPLKPAEDSENKDHAGEISSLPFPGVVLLKPAASRGGPGLSKNGE
EKKEDRKIDAAKNTFQSKINQEELASGTPPARFPKAPSKLTVGGPWGQSQEKEKGDKNSATPKQKPLPPL
FTLGPPPPKPNRPPNVDLTKFHKTSSGNSTSKGQTSYSTSLPPPPPSHPASQPPLPASHPSQPPVPSLP
PRNIKPPFDLKSPVNEDNQDGVTHSDGAGNLDEEQDSEGETYEDIEASKEREKKREKKEKKRLELEKKEQ
KEKEKKEQEIKKKFKLTGPIQVIHLAKACCDVKGGKNELSFKQGEQIEIIRITDNPEGKWLGRARGSYG
YIKTTAVEIDYDSLKKKDSLGAAPSRPIEDDQEVYDDVAEQDDISSHSQSGSGGIFPPPPDDDIYDGIEE
EDADDGSTLQVQEKSNWISWILKMLKGGKDRKKSIREKPKVSDSDNNEGSSFPAPPKQLDMGDEVYDDV
DTSDFPVSSAEMSGTNGKAKTEEDLKKLKKQEKEEKDFRKKFKYDGEIRVLYSTKVTTITSKKWGT
RDLQVKPGESLEVIQTDDTKVLCRNEEGKYGYVLRSYLADNDGEIYDDIADGCIYDND

TRTRPLEQKLISEEDLAANDILDYKDDDDKV

Chromatograms: https://cdn.origene.com/chromatograms/mk6688_e07.zip

Restriction Sites: SgfI-MluI

Reconstitution Method:

1. Centrifuge at 5,000xg for 5min.
2. Carefully open the tube and add 100ul of sterile water to dissolve the DNA.
3. Close the tube and incubate for 10 minutes at room temperature.
4. Briefly vortex the tube and then do a quick spin (less than 5000xg) to concentrate the liquid at the bottom.
5. Store the suspended plasmid at -20°C. The DNA is stable for at least one year from date of shipping when stored at -20°C.

RefSeq: [NM_001465.6](#)

RefSeq Size: 4858 bp

RefSeq ORF: 2490 bp

Locus ID: 2533

UniProt ID: [O15117](#)

Cytogenetics: 5p13.1

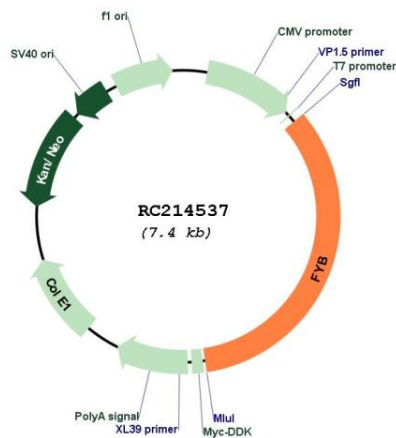
Domains: SH3

Protein Families: Druggable Genome

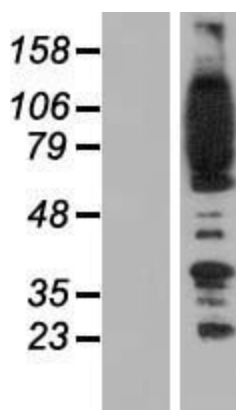
MW: 90.7 kDa

Gene Summary: The protein encoded by this gene is an adapter for the FYN protein and LCP2 signaling cascades in T-cells. The encoded protein is involved in platelet activation and controls the expression of interleukin-2. Three transcript variants encoding different isoforms have been found for this gene. [provided by RefSeq, Jul 2011]

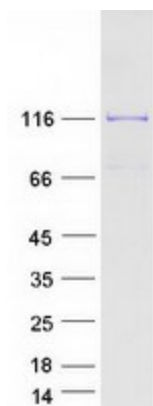
Product images:



Circular map for RC214537



Western blot validation of overexpression lysate (Cat# [LY419911]) using anti-DDK antibody (Cat# [TA50011-100]). Left: Cell lysates from untransfected HEK293T cells; Right: Cell lysates from HEK293T cells transfected with RC214537 using transfection reagent MegaTran 2.0 (Cat# [TT210002]).



Coomassie blue staining of purified FYB1 protein (Cat# [TP314537]). The protein was produced from HEK293T cells transfected with FYB1 cDNA clone (Cat# RC214537) using MegaTran 2.0 (Cat# [TT210002]).