

## Product datasheet for **RC214536**

### ITIH5 (NM\_030569) Human Tagged ORF Clone

#### Product data:

Product Type:	Expression Plasmids
Product Name:	ITIH5 (NM_030569) Human Tagged ORF Clone
Tag:	Myc-DDK
Symbol:	ITIH5
Synonyms:	ITI-HC5; PP14776
Mammalian Cell Selection:	Neomycin
Vector:	pCMV6-Entry (PS100001)
E. coli Selection:	Kanamycin (25 ug/mL)



[View online »](#)

**ORF Nucleotide  
Sequence:**

>RC214536 representing NM\_030569  
 Red=Cloning site Blue=ORF Green=Tags(s)

TTTTGTAATACGACTCACTATAGGGCGGCCGGAATTCGTCGACTGGATCCGGTACCGAGGAGATCTGCC  
 GCC**CGGATCGCC**

ATGCTCCTGCTGCTGGGGCTGTGCCTGGGGCTGTCCCTGTGTGTGGGGTGCAGGAAGAGGCCGAGAGCT  
 GGGCCACTCTTCGGAGCAGGATGGACTCAGGGTCCCGAGGCAAGTCAGACTGTTGCAGAGGCTGAAAAC  
 CAAACCTTTGATGACAGAATTCTCAGTGAAGTCTACCATCATTTCCCGTTATGCCTTCACTACGGTTTCC  
 TGCAGAATGCTGAACAGAGCTTCTGAAGACCAGGACATTGAGTTCAGATGCAGATTCCAGCTGCAGCTT  
 TCATCACCAACTTCACTATGCTTATTGGAGACAAGGTGTATCAGGGCGAAATTACAGAGAGAGAAAAGAA  
 GAGTGGTATAGGGTAAAAGAGAAAAGGAATAAAACCACAGAAGAAAATGGAGAGAAGGGGACTGAAATA  
 TTCAGAGCTTCTGCAGTATTCCAGCAAGGACAAAGCCGCTTTTTCTGAGTTATGAGGAGCTTCTGC  
 AGAGGCGCTGGCAAGTACGAGCACAGCATCAGCGTCCGGCCCCAGCAGCTGTCCGGGAGGCTGAGCGT  
 GGACGTGAATATCCTGGAGAGCGCGGGCATCGCATCCCTGGAGGTGCTGCCGCTTCAACAACAGCAGCGAG  
 AGGGGCAGTGGGCGCGGGGAAGATGATTCTGGGCCTCCCCATCTACTGTCAATAACCAAAATGAAACAT  
 TTGCCAACATAATTTTTAAACCTACTGTAGTACAACAAGCCAGGATTGCCAGAATGGAATTTGGGAGA  
 CTTTATCATTAGATATGACGTCAATAGAGAACAGAGCATTGGGGACATCCAGGTTCTAAATGGCTATTTT  
 GTGCACTACTTTGCTCCTAAAGACCTTCTCCTTTACCAAGAATGTGGTATTCTGTGCTTACAGCAGTG  
 CTTCTATGGTGGGAACCAAACTCCGGCAGACCAAGGATGCCCTTTCACAATTCTCCATGACCTCCGACC  
 CCAGGACCGTTTCAGTATCATTGGATTTTCCAACCGGATCAAAGTATGGAAGGACCACTTGATATCAGTC  
 ACTCCAGACAGCATCAGGGATGGGAAAGTGTACATTCACCATATGTCACCACTGGAGGCCAGACATCA  
 ACGGGGCCCTGCAGAGGGCCATCAGGCTCCTCAACAAGTACGTGGCCACAGTGGCATTGGAGCCGGAG  
 CGTGTCCCTCATCGTCTTCTGACGGATGGGAAGCCACGGTCCGGGAGACGCACACCCTCAAGATCCTC  
 AAACAACCCCGAGAGGCCGCCGAGGCCAAGTCTGCATCTTACCATTGGCATCGCAACAGCAGTGGACT  
 TCAGGCTGCTGGAGAACTGTGCTGGAGAAGTGTGGCCTCACACGGCGCGTGCACGAGGAGGAGGACGC  
 AGGCTCGCAGCTCATCGGTTCTACGATGAAATCAGGACCCCGCTCCTCTGACATCCGCATCGATTAT  
 CCCCCAGCTCAGTGGTGCAGGCCACCAAGACCCTGTTCCCAACTACTTCAACGGCTCGGAGATCATCA  
 TTGCGGGGAAGCTGGTGGACAGGAAGCTGGATCACCTGCACGTGGAGGTACCCGCCAGCAACAGTAAGAA  
 ATTCATCATCCTGAAGACAGATGTCCCTGTGCGGCTCAGAAGGCAGGAAAGATGTCACAGGAAGCCCC  
 AGGCTGGAGGCGATGGAGAGGGGGACCAACCACATCGAGCGTCTCTGGAGCTACCTCACCAAAAGG  
 AGCTGCTGAGCTCCTGGCTGCAAAGTGACGATGAACCGGAGAAGGAGCGGCTGCGGCAGCGGGCCAGGC  
 CCTGGCTGTGAGCTACCGCTTCTCACTCCCTTCACTCCATGAAGCTGAGGGGGCCGGTCCCACGCATG  
 GATGGCCTGGAGGAGGCCACGGCATGTGCGGTGCCATGGGACCCGAACCGGTGGTGCAGAGCGTGCAGG  
 GAGCTGGCAGCGACCCAGGACCTTTGCTCAAGAAGCCATACCAGCCAAGAATTAATCTCTAAAACATC  
 AGTGGATGGTGTATCCCACTTTGTTGTGGATTTCCCCCTGAGCAGACTCACCGTGTGCTTCAACATTGAT  
 GGGCAGCCCGGGACATCCTCAGGCTGGTCTGTGATCACAGGGACTCTGGTGTACAGTGAACGGAGAGT  
 TAATTGGGGCACCCGCCCTCCAATGGCCACAAGAAACAGCGCACTTACTTGGCCTATCACCATCCT  
 CATCAACAAGCCAGAGAGATCTTATCTCGAGATCACACCGAGCAGAGTCATCTTGGATGGTGGGACAGA  
 CTGGTGTCCCTGCAACCAGAGTGTGGTGGTGGGGAGCTGGGGGCTGGAGGTGTCCGTGTCTGCCAACG  
 CCAATGTACCGTCACTATCCAGGGCTCCATAGCCTTTGTATCCTCATCCACCTCTACAAAAAGCCGGC  
 GCCCTTCCAGCGACACCCTGGGTTTCTACATTGCCAACAGCGAGGGCCTTTCCAGCAACTGCCACGGA  
 CTGCTGGGTGAGTTCCTGAATCAGGATGCCAGACTCACAGAAGACCCTGCAGGGCCAGCCAGAACCTCA  
 CTCACCTCTGCTCCTTCAAGTGGGAGAGGGCCCTGAGGCCGTCTAACAGTGAAGGCCACCAAGTCCC  
 AGTGGTCTGGAAGCAAAGGAAGATTTACAACGGGAAGAGCAGATAGACTGCTGGTTTCCAGGAACAAT  
 GCCGCCAACTGATTGACGGGGAGTACAAGGATTACCTGGCATCCATCCATTTGACACAGGGATGGACA  
 CTTGGCCGGGAATGTCCAGGGAGCTCTGAAGCTGGCAGCCTTAAGATGCAAGTGCATGAAGGACAG

**ACGCGT**ACGCGGCCGCTCGAGCAGAACTCATCTCAGAAGAGGATCTGGCAGCAAATGATATCCTGGATT  
 ACAAGGATGACGACGATAAGGTTTAA

**Protein Sequence:** >RC214536 representing NM\_030569  
Red=Cloning site Green=Tags(s)

```

MLLLLGLCLGLSLCVGSQEEAQSWSGHSSEQDGLRVPRQVRLQLRLKTKPLMTEFSVKSTIISRYAFTTVS
CRMLNRASEDQDIEFQMQIPAAAFITNFMTLIGDKVYQGEITEREKKSGDRVKEKRNKTTEENGEKGTETI
FRASAVIPSKDKAAFFLSYEELLQRRLLGKYEHSISVRPQQLSGRLSVDVNILESAGIASLEVLPLHNSRQ
RSGSRGEDDSGPPPSTVINQNETFANIIFKPTVVQQARIAQNGILGDFIIRYDVNREQSIGDIQVLNGYF
VHYFAPKDLPLPKNVFVLDSSASVMVGTKLRQTKDALFTILHDLRPQDRFSIIGFSNRKIVWKDHLISV
TPDSIRDGKVYIHHMSPTGGTDINGALQRAIRLLNKYVAHSGIGDRSVSLIVFLTDGKPTVGETHTLKIL
NNTREAARGQVCIFTIGIGNVDVFRLLLEKLSLENCGLTRRVHEEEDAGSQLIGFYDEIRTPLLSDIRIDY
PPSSVVQATKTLFPNYFNGSEIIAGKLVDRLDHLHVEVTASNSKFFIILKTDVPRPQKAGKDVTPSP
RPGGDGEGDNTNHIERLWSYLTTKELLSSWLQSDDEPEKERLRQRAQALAVSYRFLTPFTSMKLRGPVPRM
DGLEEAHGMSAAMGPEPVVQSVRGAGTQPGPLKPKPYQPRIKISKTSVDGDPHFVDFPLSRLTVCFNID
GQPGDILRLVSDHRDSGVTVNGELIGAPPNGHKKQRTYLRTITILINKPERSYLEITPSRVILDGGDR
LVLPCNQSVVVGSWGLEVSANANVTVTIQGSAFVILIHLYKKPAPFQRHHLGFYIANSEGLSSNCHG
LLGQFLNQDARLTEDPAGPSQNLTHPLLLQVGEPEAVLTVKGHQVPVWVKQRKIYNGEEQIDCFWARRN
AAKLIDGEYKDYLAHPFDTGMDTWPGNVQGALKLAALKMVHEGQ
    
```

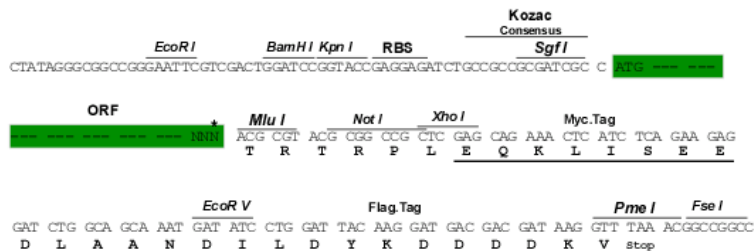
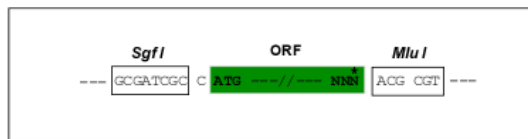
TRTRPLEQKLISEEDLAANDILDYKDDDDKV

**Chromatograms:** [https://cdn.origene.com/chromatograms/mk8030\\_c02.zip](https://cdn.origene.com/chromatograms/mk8030_c02.zip)

**Restriction Sites:** SgfI-MluI

**Cloning Scheme:**

Cloning sites used for ORF Shuttling:



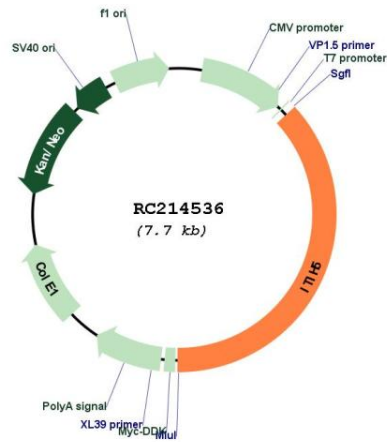
\* The last codon before the Stop codon of the ORF

**ACCN:** NM\_030569

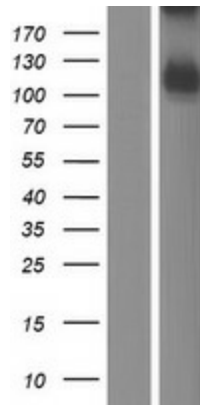
**ORF Size:** 2868 bp

<b>OTI Disclaimer:</b>	The molecular sequence of this clone aligns with the gene accession number as a point of reference only. However, individual transcript sequences of the same gene can differ through naturally occurring variations (e.g. polymorphisms), each with its own valid existence. This clone is substantially in agreement with the reference, but a complete review of all prevailing variants is recommended prior to use. <a href="#">More info</a>
<b>OTI Annotation:</b>	This clone was engineered to express the complete ORF with an expression tag. Expression varies depending on the nature of the gene.
<b>Components:</b>	The ORF clone is ion-exchange column purified and shipped in a 2D barcoded Matrix tube containing 10ug of transfection-ready, dried plasmid DNA (reconstitute with 100 ul of water).
<b>Reconstitution Method:</b>	<ol style="list-style-type: none"> <li>1. Centrifuge at 5,000xg for 5min.</li> <li>2. Carefully open the tube and add 100ul of sterile water to dissolve the DNA.</li> <li>3. Close the tube and incubate for 10 minutes at room temperature.</li> <li>4. Briefly vortex the tube and then do a quick spin (less than 5000xg) to concentrate the liquid at the bottom.</li> <li>5. Store the suspended plasmid at -20°C. The DNA is stable for at least one year from date of shipping when stored at -20°C.</li> </ol>
<b>RefSeq:</b>	<a href="#">NM_030569.3</a> , <a href="#">NP_085046.3</a>
<b>RefSeq Size:</b>	6331 bp
<b>RefSeq ORF:</b>	2829 bp
<b>Locus ID:</b>	80760
<b>UniProt ID:</b>	<a href="#">Q86UX2</a>
<b>Cytogenetics:</b>	10p14
<b>Domains:</b>	VWA, VIT
<b>MW:</b>	105.9 kDa
<b>Gene Summary:</b>	This gene encodes a heavy chain component of one of the inter-alpha-trypsin inhibitor (ITI) family members. ITI proteins are involved in extracellular matrix stabilization and in the prevention of tumor metastasis. They are also structurally related plasma serine protease inhibitors and are composed of a light chain and varying numbers of heavy chains. This family member is thought to function as a tumor suppressor in breast and thyroid cancers. Alternative splicing results in multiple transcript variants. [provided by RefSeq, Aug 2011]

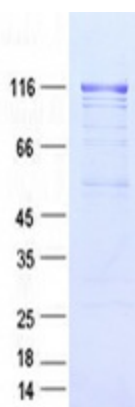
Product images:



Circular map for RC214536



Western blot validation of overexpression lysate (Cat# [LY410828]) using anti-DDK antibody (Cat# [TA50011-100]). Left: Cell lysates from untransfected HEK293T cells; Right: Cell lysates from HEK293T cells transfected with RC214536 using transfection reagent MegaTran 2.0 (Cat# [TT210002]).



Coomassie blue staining of purified ITIH5 protein (Cat# [TP314536]). The protein was produced from HEK293T cells transfected with ITIH5 cDNA clone (Cat# RC214536) using MegaTran 2.0 (Cat# [TT210002]).