

Product datasheet for **RC214524**

PCDH10 (NM_020815) Human Tagged ORF Clone

Product data:

Product Type:	Expression Plasmids
Product Name:	PCDH10 (NM_020815) Human Tagged ORF Clone
Tag:	Myc-DDK
Symbol:	PCDH10
Synonyms:	OL-PCDH; PCDH19
Mammalian Cell Selection:	Neomycin
Vector:	pCMV6-Entry (PS100001)
E. coli Selection:	Kanamycin (25 ug/mL)



[View online »](#)

ORF Nucleotide
Sequence:

>RC214524 representing NM_020815
Red=Cloning site Blue=ORF Green=Tags(s)

TTTTGTAATACGACTCACTATAGGGCGGCCGGAATTCGTCGACTGGATCCGGTACCGAGGAGATCTGCC
GCC**CGCATCGCC**

ATGATTGTGCTATTATTGTTTGCCTTGCTCTGGATGGTGAAGGAGTCTTTCCAGCTTCACTACACGG
TACAGGAGGAGCAGGAACATGGCACTTTTCGTGGGAATATCGCTGAAGATCTGGGTCTGGACATTACAAA
ACTTTTCGGCTCGCGGTTTCAGACGGTGCCTCAACTCAAGGACCCCTTACTTAGACCTCAACCTGGAGACA
GGGTGCTGTACGTGAACGAGAAAATAGACCGCAACAAATCTGCAAACAGAGCCCTCCTGTGTCTGC
ACCTGGAGGTCTTTCTGGAGAACCCCTGGAGCTGTTCCAGGTGGAGATCGAGGTCTGGACATTAATGA
CAACCCCTCTTTCCCGAGCCAGACCTGACGGTGAATCTCTGAGAGCGCCACGCCAGGCACTCGC
TTCCCTTGAGAGCGCATTTCGACCCAGACGTGGGCACCAACTCCTTGCAGGACTACGAGATCACCCCA
ACAGCTACTTCTCCTGGACGTGCAGACCCAGGGGATGGCAACCGATTTCGTGAGCTGGTCTGGAGAA
GCCACTGGACCGAGAGCAGCAAGCGGTGCACCGCTACGTGCTGACCGCGTGGACGGAGGAGGTGGGGGA
GGAGTAGGAGAAGGAGGGGAGGTGGCGGGGAGCAGGCCTGCCCCCAAGCAGCAGCGCACCGGCACGG
CCCTACTCACCATCCGAGTGTGGACTCCAATGACAATGTGCCCGCTTCGACCAACCCGCTCACTACTGT
GTCCCTACCAGAGAACTCTCCCCAGGCACTCTCGTATCCAGCTCAACGCCACCGACCCGGACGAGGGC
CAGAACGGTGAGGTCTGTACTCCTCAGCAGCCACATTCGCCCCGGGCGCGGGAGCTTTTCGGACTCT
CGCCGCGCACTGGCAGACTGGAGTAAGCGGCGAGTTGGACTATGAAGAGAGCCAGTGTACCAAGTGA
CGTGCAAGCCAAGGACCTGGGCCCAACGCCGTGCCTGCGCACTGCAAGGTGCTAGTGGAGTACTGGAT
GCTAATGACAACGCGCCAGAGATCAGCTTCAGCACCGTGAAGGAAGCGGTGAGTGAGGGCGCGGCCCG
GCACTGTGGTGGCCCTTTTCAGCGTACTGACCCGCACTCAGAGGAGAATGGGCAGGTGCAGTGGCAG
ACTGGGAGACGTGCCTTTCCGCCTCAAGTCTTCTTTAAGAATTACTACACCATCGTTACCGAAGCCCC
CTGGACCGAGAGGCGGGGACTCTACACCCTGACTGTAGTGGCTCGGGACCGGGGCGAGCCTGCGCTCT
CCACCAGTAAGTCGATCCAGGTACAAGTGTGGATGTGAACGACAACCGCCGCTTTTCAGCCAGCCGT
CTACGACGTGTATGTGACTGAAAACAACGTGCCTGGCGCTACATCTACGCGGTGAGCGCCACCGACCG
GATGAGGGCGCAACGCCAGCTTGCTACTCTATCCTCGAGTGCAGATCCAGGGCATGAGCGTCTTCA
CCTACGTTTCTCAACTCTGAGAACGGTACTTGTACGCCCTGCGCTCCTTCGACTATGAGCAGCTGAA
GGACTTCAGTTTTTCAGGTGGAAGCCCGGACGCTGGCAGCCCCAGGCGTGGCTGGTAACGCCACTGTC
AACATCCTCATAGTGGATCAAAATGACAACGCCCTGCCATCGTGGCGCTCTACCAGGGCGCAACGGGA
CTCCAGCGGTGAGGTGCTGCCCGCTCGGCGGAGCCGGTACCTGCTCACCCGCTGGCCGCGCTGGA
CGCGGACGACGGCGAGAACGCCGGCTCACTTACAGCATCGTGGCTGGCAACGAAATGAACCTCTTTCGC
ATGGACTGGCGCACCGGGGAGCTGCGCACAGCAGCCGAGTCCCGGCAAGCGGACCCCAAGCGCCCTT
ATGAGCTGGTGTATCGAGGTGCGCGACCATGGGCAGCCGCCCTTCTCCACCGCCACCTGGTGGTTCA
GCTGGTGGATGGCGCGTGGAGCCCAAGGGCGGGGAGCGGAGCGGAGGGTCAAGGAGACCCAG
CGCCCCAGTCGCTTGGCGGGGGAAACCTCGCTAGACCTCACCTCATCCTCATCGCGTTGGGT
CGGTGCTCTTCACTTCTGCTGGCCATGATCGTGTGGCGTGGCTTGCACAAAAGAGAAGAAGCTCAA
CATCTATACTTGTCTGGCCAGCATTGCTGCCTGCTGCTGCTGCTGCGGTGGCGGAGTTTCGACCTGC
TGTGGCCCAAGCCCGGCGCGCAAGAAGAACTCAGCAAGTCAGACATCATGCTGGTGCAGAGTCCA
ATGTACCCAGTAACCCGCGCCAGGTGCCGATAGAGGAGTCCGGGGCTTTGGCTCCACCCACACACCA
GAATTACTGCTATCAGGTATGCCTGACCCCTGAGTCCGCCAAGACCGACCTGATGTTTCTTAAGCCCTGC
AGCCCTTCGCGGAGTACGGACACTGAGCACAACCCCTGCGGGGCCATCGTACCGGTTACACCGACCAGC
AGCCTGATATCATCTCCAACGGAAGCATTTTGTCCAACGAGGTAAGGCTGAAGCGAAAGGACCACCATCT
CTCATCTCCTCCATCAGAAAGCCTCCTC

ACGCGTACGCGGCGCTCGAGCAGAACTCATCTCAGAAGAGGATCTGGCAGCAATGATATCTGGATT
ACAAGGATGACGACGATAAGGTTTAA

Protein Sequence: >RC214524 representing NM_020815
 Red=Cloning site Green=Tags(s)

MIVLLLFALLWMVEGVFSQLHYTVQEEQEHGTFVGNIAEDLGLDITKLSARGFQTPVNSRTPYLDLNLLET
 GVLVYNEKIDREQICKQSPSCVLHLEVFLENLELFQVEIEVLDINDNPPSFPEPDLTVEISESATPGTR
 FPLESAFDPDVGTVNSLRDYEITPNSYFSLDVQTQGDGNRF AELVLEKPLDREQQAVHRYVLTAVDGGGGG
 GVGGGGGGGAGLPPQQQRTGTALLTIRVLDSDNDNVP AFDQPVYTVVSLPENSPPGTLVIQLNATDPDEG
 QNGEVVYFSSSHISPRARELFGLSPRTGRLEVSGELDYEE SPVYQVYVQAKDLGPNVPAHCKVLRVLD
 ANDNAPEISFSTVKEAVSEGAAPGTVALF SVTDRDSEENGQVQCELLGDVPFRLKSSFKNYTIVTEAP
 LDREAGDSYTLTVVARDRGEALSTSKSIQVQVSDVNDNAPRFSQPVYDVYVTENNVP GAYIYAVSATDR
 DEGANAQLAYSILECQIQGMSVFTYVSIENSEGYLYALRSFDYEQLKDFSFQVEARDAGSPQALAGNATV
 NILIVDQNDNAPAIVAPLPGRNGTPAREVLP R SAEPGYLLTRVAAVDADDGENARLTYSIVRGNEMNLF
 MDWRTGELRTARRVPAKRDPQRPYELVIEVRDHGQPPLSSTATLVVQLVDGAVEPQGGGSGGGSGGEHQ
 RPSRSGGGETSLDLTLILIIALGSVSFIFLLAMIVLAVRCQKEKLNIIYCLASDCLCCCGGGGGSTC
 CGRQARARKKKLSKSDIMLVQSSNVPSNPAQVP IEE SGGFGSHHHNQNYCYQVCLTPESAKTDLMLFKPC
 SPSRSTDEHNPCGAIVTGYTDQOPDII SNGSILSNEVRLKRKDHHLSSPPSESLL

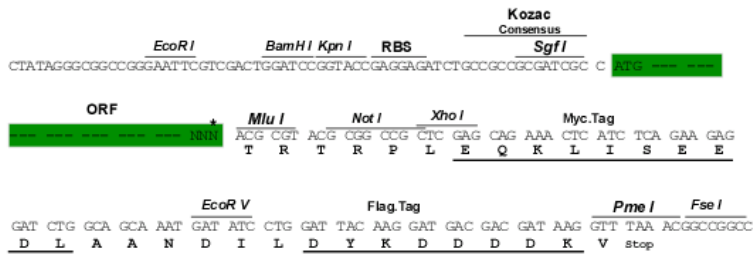
TRTRPLEQKLISEEDLAANDILDYKDDDDKV

Chromatograms: https://cdn.origene.com/chromatograms/mk8010_d12.zip

Restriction Sites: SgfI-MluI

Cloning Scheme:

Cloning sites used for ORF Shuttling:

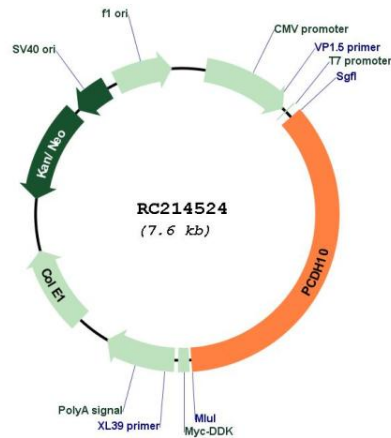


* The last codon before the Stop codon of the ORF

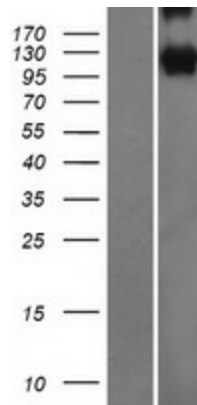
ACCN: NM_020815

ORF Size:	2688 bp
OTI Disclaimer:	The molecular sequence of this clone aligns with the gene accession number as a point of reference only. However, individual transcript sequences of the same gene can differ through naturally occurring variations (e.g. polymorphisms), each with its own valid existence. This clone is substantially in agreement with the reference, but a complete review of all prevailing variants is recommended prior to use. More info
OTI Annotation:	This clone was engineered to express the complete ORF with an expression tag. Expression varies depending on the nature of the gene.
Components:	The ORF clone is ion-exchange column purified and shipped in a 2D barcoded Matrix tube containing 10ug of transfection-ready, dried plasmid DNA (reconstitute with 100 ul of water).
Reconstitution Method:	<ol style="list-style-type: none">1. Centrifuge at 5,000xg for 5min.2. Carefully open the tube and add 100ul of sterile water to dissolve the DNA.3. Close the tube and incubate for 10 minutes at room temperature.4. Briefly vortex the tube and then do a quick spin (less than 5000xg) to concentrate the liquid at the bottom.5. Store the suspended plasmid at -20°C. The DNA is stable for at least one year from date of shipping when stored at -20°C.
RefSeq:	NM_020815.3
RefSeq Size:	3935 bp
RefSeq ORF:	2691 bp
Locus ID:	57575
UniProt ID:	Q9P2E7
Cytogenetics:	4q28.3
Domains:	CA
Protein Families:	Druggable Genome, Transmembrane
MW:	94.9 kDa
Gene Summary:	This gene belongs to the protocadherin gene family, a subfamily of the cadherin superfamily. This family member contains 6 extracellular cadherin domains, a transmembrane domain and a cytoplasmic tail differing from those of the classical cadherins. The encoded protein is a cadherin-related neuronal receptor thought to function in the establishment of specific cell-cell connections in the brain. This gene plays a role in inhibiting cancer cell motility and cell migration. Alternative splicing results in multiple transcript variants encoding different isoforms. [provided by RefSeq, Jan 2015]

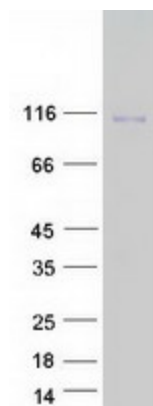
Product images:



Circular map for RC214524



Western blot validation of overexpression lysate (Cat# [LY412286]) using anti-DDK antibody (Cat# [TA50011-100]). Left: Cell lysates from untransfected HEK293T cells; Right: Cell lysates from HEK293T cells transfected with RC214524 using transfection reagent MegaTran 2.0 (Cat# [TT210002]).



Coomassie blue staining of purified PCDH10 protein (Cat# [TP314524]). The protein was produced from HEK293T cells transfected with PCDH10 cDNA clone (Cat# RC214524) using MegaTran 2.0 (Cat# [TT210002]).