

Product datasheet for RC214520

NUDT6 (NM_198041) Human Tagged ORF Clone

Product data:

Product Type:	Expression Plasmids
Product Name:	NUDT6 (NM_198041) Human Tagged ORF Clone
Tag:	Myc-DDK
Symbol:	NUDT6
Synonyms:	ASFGF2; FGF-AS; FGF2AS; GFG-1; GFG1
Mammalian Cell Selection:	Neomycin
Vector:	pCMV6-Entry (PS100001)
E. coli Selection:	Kanamycin (25 ug/mL)
ORF Nucleotide Sequence:	>RC214520 ORF sequence Red=Cloning site Blue=ORF Green=Tags(s)

TTTTGTAATACGACTCACTATAGGGCGGCCGGAATTCGTCGACTGGATCCGGTACCGAGGAGATCTGCCGCCGCGATCGCC

ATGCGGCAGCCGCTGAGCTGGGGCCGCTGGCGCGCATGCTTGCCGAACCTACGGCCCCGGCCTTCGGCGGTTACCGCTGGGCCTCGGGCGCACAGGGTTACGTGCGGAATCCGCCAGTTGGAGCGTGCATCTGCA GGGCGAGCTGGACAGATTCGGGGGCATCTCGGTGCGCCTGGCGCGGCTCGATGCGCTGGACCGCCTGGAC GCTGCCGCTTCCAGAAGGGCTTGAGGCTGCAGTACAGCAATGGCGATCAGAAGGTAGAACAGCTGTAT GGCTGCACATCCCATCCTCCAAAGCCGATTTATTGCCCTGCTGCTTCCCTGGGCTTCTGCTTTCACCA CGCAGAATCGGATTCATCAACGTTGACTCTGTGGCTGAGAGAAGGCCACAGATTACCAGGATATGCT TCACATCAAGTAGGAGTTGCAGGAGCTGTATTTGATGAAAGTACTAGAAAAATACTGGTTGTACAAGATC GAAATAAATTGAAAAATATGTGGAAGTTTCCAGGAGGCCTGTGAGAGCCTGAAGAAGATATTGGAGACAC AGCGGTTCCGAGAAGTTTTTGAAGAGACTGGTATAAAATCAGAATTCAGGTCGGTCCCTGAGTATTCGGCAA CAGCACAAAATCCTGGAGCTTTTGGGAAGTCAGATATGTATATCATCTGCCGCTAAAGCCATATTCAT TCACCATAAATTTTCCAGGAAGAATGCTTAAGATGTGAGTGGATGATCTCAATGACCTGGCGAAGAC TGAAAAACAACCTCCATCACCAGCAGAGTTGCTAGGCTGCTGCTGTATGGGTACAGAGAAGGGTTTGAC AAAATTGACCTGACTGTGGAAGAATTCAGCAGTTTACAGGACTGTTTTATAAACTATCATAAAG AACTGCCAGAGAATTATAAACTATGAAAGGAATTGAT

ACGCGTACGCGGCCGCTCGAGCAGAACTCATCTCAGAAGAGGATCTGGCAGCAATGATATCCTGGATT ACAAGGATGACGACGATAAGGTTTAA



[View online »](#)

Protein Sequence: >RC214520 protein sequence
Red=Cloning site Green=Tags(s)

MRQPLSWGRWRAMLARTYGPGPSAGYRWASGAQGYVRNPPVGACDLQGE LDRFGGISVRLARLDALDRLD
 AAAFQKGLQAAVQQRSEGR TAVWLHIPILQSRFIAPAASLGFCFHHAESDSTLTLWLREGPSRLPGYA
 SHQVGVAGAVFDESTRKILVVQDRNKLKNMWFPGGLSEPEEDIGDTAVREVFEETGIKSEFRS VLSIRQ
 QHTNPGAFGKSDMYIICRLKPYSFTINFCQEECLRCEWMDLNDLAKTENTTPITSRVARLLLYGYREGFD
 KIDLTV EELPAVYTGLFYKLYHKELPENYKTMKGID

TRTRPLEQKLISEEDLAANDILDYKDDDDKV

Chromatograms: https://cdn.origene.com/chromatograms/mk6566_a01.zip

Restriction Sites: SgfI-MluI

Cloning Scheme:



ACCN: NM_198041

ORF Size: 951 bp

OTI Disclaimer: The molecular sequence of this clone aligns with the gene accession number as a point of reference only. However, individual transcript sequences of the same gene can differ through naturally occurring variations (e.g. polymorphisms), each with its own valid existence. This clone is substantially in agreement with the reference, but a complete review of all prevailing variants is recommended prior to use. [More info](#)

OTI Annotation: This clone was engineered to express the complete ORF with an expression tag. Expression varies depending on the nature of the gene.

Components: The ORF clone is ion-exchange column purified and shipped in a 2D barcoded Matrix tube containing 10ug of transfection-ready, dried plasmid DNA (reconstitute with 100 ul of water).

Reconstitution Method:

1. Centrifuge at 5,000xg for 5min.
2. Carefully open the tube and add 100ul of sterile water to dissolve the DNA.
3. Close the tube and incubate for 10 minutes at room temperature.
4. Briefly vortex the tube and then do a quick spin (less than 5000xg) to concentrate the liquid at the bottom.
5. Store the suspended plasmid at -20°C. The DNA is stable for at least one year from date of shipping when stored at -20°C.

RefSeq Size: 1129 bp

RefSeq ORF: 444 bp

Locus ID: 11162

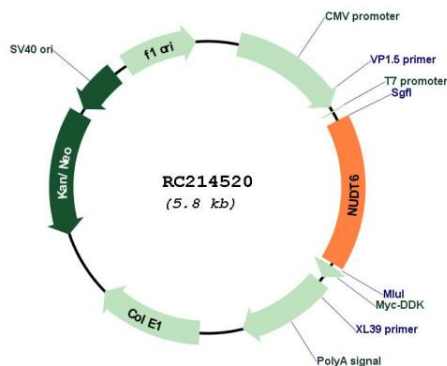
UniProt ID: [P53370](#)

Cytogenetics: 4q28.1

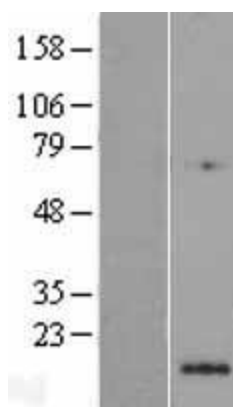
MW: 35.7 kDa

Gene Summary: This gene overlaps and lies on the opposite strand from FGF2 gene, and is thought to be the FGF2 antisense gene. The two genes are independently transcribed, and their expression shows an inverse relationship, suggesting that this antisense transcript may regulate FGF2 expression. This gene has also been shown to have hormone-regulatory and antiproliferative actions in the pituitary that are independent of FGF2 expression. Alternatively spliced transcript variants encoding different isoforms have been found for this gene. [provided by RefSeq, Oct 2011]

Product images:



Circular map for RC214520



Western blot validation of overexpression lysate (Cat# [LY405102]) using anti-DDK antibody (Cat# [TA50011-100]). Left: Cell lysates from untransfected HEK293T cells; Right: Cell lysates from HEK293T cells transfected with RC214520 using transfection reagent MegaTran 2.0 (Cat# [TT210002]).