

Product datasheet for **RC214515**

RBP1 (NM_002899) Human Tagged ORF Clone

Product data:

Product Type: Expression Plasmids
Product Name: RBP1 (NM_002899) Human Tagged ORF Clone
Tag: Myc-DDK
Symbol: RBP1
Synonyms: CRABP-I; CRBP; CRBP1; CRBPI; RBPC
Mammalian Cell Selection: Neomycin
Vector: pCMV6-Entry (PS100001)
E. coli Selection: Kanamycin (25 ug/mL)
ORF Nucleotide Sequence: >RC214515 representing NM_002899
Red=Cloning site Blue=ORF Green=Tags(s)

TTTTGTAATACGACTCACTATAGGGCGGCCGGAATTCGTCGACTGGATCCGGTACCGAGGAGATCTGCC
GCC**CGGATCGCC**

ATGCCAGTCGACTTCACTGGTACTGGAAGATGTTGGTCAACGAGAATTCGAGGAGTACCTGCGCGCC
TCGACGTCAATGTGGCCTTGCGAAAATCGCCAATTGCTGAAGCCAGACAAAGAGATCGTGCAGGACGG
TGACCATATGATCATCCGCACGCTGAGCACTTTTAGGAACTACATCATGGACTTCCAGGTTGGGAAGGAG
TTTGAGGAGGATCTGACAGGCATAGATGACCGCAAGTGCATGACAACAGTGAGCTGGACGGAGACAAGC
TCCAGTGTGTGAGAAGGGTGAGAAGGAGGGCGTGGCTGGACCCAGTGGATCGAGGGTGATGAGCTGCA
CCTGGAGATGAGAGTGAAGGTGTGGTCTGCAAGCAAGTATTCAAGAAGGTGCAG

ACGCGTACGCGGCCGCTCGAGCAGAACTCATCTCAGAAGAGGATCTGGCAGCAAATGATATCCTGGATT
ACAAGGATGACGACGATAAGGTTTAA

Protein Sequence: >RC214515 representing NM_002899
Red=Cloning site Green=Tags(s)

MPVDFTGYWKMLVNENFEEYLRALDVNVALRKIANLLKPDKEIVQDGDHMIIRTLSTFRNYIMDFQVGKE
FEEDLTGIDDRKMTTVSWDGDKLQCVQKGEKEGRGWTQWIEGDELHLEMRVEGVVCKQVFKKVQ

TRTRPLEQKLISEEDLAANDILDYKDDDDKV

Chromatograms: https://cdn.origene.com/chromatograms/mk6115_h08.zip

Restriction Sites: SgfI-MluI



[View online »](#)

Cloning Scheme:


ACCN: NM_002899

ORF Size: 405 bp

OTI Disclaimer: The molecular sequence of this clone aligns with the gene accession number as a point of reference only. However, individual transcript sequences of the same gene can differ through naturally occurring variations (e.g. polymorphisms), each with its own valid existence. This clone is substantially in agreement with the reference, but a complete review of all prevailing variants is recommended prior to use. [More info](#)

OTI Annotation: This clone was engineered to express the complete ORF with an expression tag. Expression varies depending on the nature of the gene.

Components: The ORF clone is ion-exchange column purified and shipped in a 2D barcoded Matrix tube containing 10ug of transfection-ready, dried plasmid DNA (reconstitute with 100 ul of water).

- Reconstitution Method:**
1. Centrifuge at 5,000xg for 5min.
 2. Carefully open the tube and add 100ul of sterile water to dissolve the DNA.
 3. Close the tube and incubate for 10 minutes at room temperature.
 4. Briefly vortex the tube and then do a quick spin (less than 5000xg) to concentrate the liquid at the bottom.
 5. Store the suspended plasmid at -20°C. The DNA is stable for at least one year from date of shipping when stored at -20°C.

Note: Plasmids are not sterile. For experiments where strict sterility is required, filtration with 0.22um filter is required.

RefSeq: [NM_002899.5](#)

RefSeq Size: 720 bp

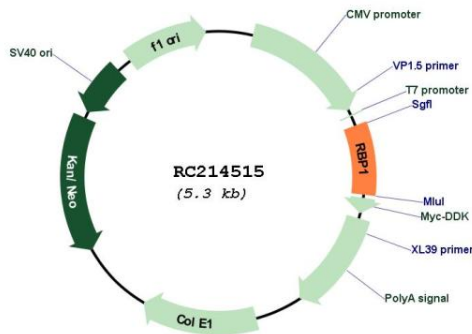
RefSeq ORF: 594 bp

Locus ID: 5947
UniProt ID: [P09455](#)
Cytogenetics: 3q23

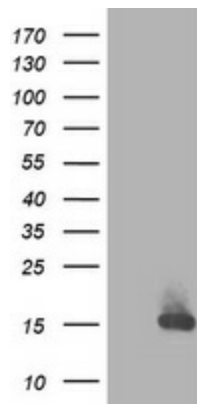
MW: 15.7 kDa

Gene Summary: This gene encodes the carrier protein involved in the transport of retinol (vitamin A alcohol) from the liver storage site to peripheral tissue. Vitamin A is a fat-soluble vitamin necessary for growth, reproduction, differentiation of epithelial tissues, and vision. Multiple transcript variants encoding different isoforms have been found for this gene. [provided by RefSeq, Aug 2008]

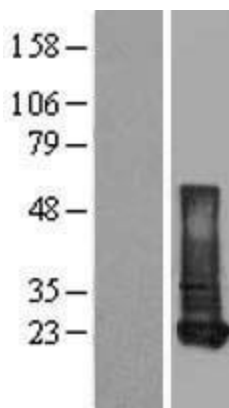
Product images:



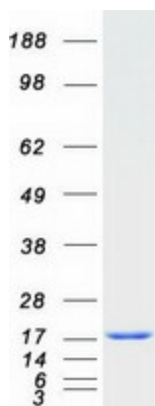
Circular map for RC214515



HEK293T cells were transfected with the pCMV6-ENTRY control (Cat# [PS100001], Left lane) or pCMV6-ENTRY RBP1 (Cat# RC214515, Right lane) cDNA for 48 hrs and lysed. Equivalent amounts of cell lysates (5 ug per lane) were separated by SDS-PAGE and immunoblotted with anti-RBP1 (Cat# [TA502835]). Positive lysates [LY401017] (100ug) and [LC401017] (20ug) can be purchased separately from OriGene.



Western blot validation of overexpression lysate (Cat# [LY401017]) using anti-DDK antibody (Cat# [TA50011-100]). Left: Cell lysates from untransfected HEK293T cells; Right: Cell lysates from HEK293T cells transfected with RC214515 using transfection reagent MegaTran 2.0 (Cat# [TT210002]).



Coomassie blue staining of purified RBP1 protein (Cat# [TP314515]). The protein was produced from HEK293T cells transfected with RBP1 cDNA clone (Cat# RC214515) using MegaTran 2.0 (Cat# [TT210002]).