

## Product datasheet for RC214501

### Epigen (EPGN) (NM\_001013442) Human Tagged ORF Clone

#### Product data:

**Product Type:** Expression Plasmids  
**Product Name:** Epigen (EPGN) (NM\_001013442) Human Tagged ORF Clone  
**Tag:** Myc-DDK  
**Symbol:** Epigen  
**Synonyms:** ALGV3072; EPG; epigen; PRO9904  
**Mammalian Cell Selection:** Neomycin  
**Vector:** pCMV6-Entry (PS100001)  
**E. coli Selection:** Kanamycin (25 ug/mL)  
**ORF Nucleotide Sequence:** >RC214501 representing NM\_001013442  
Red=Cloning site Blue=ORF Green=Tags(s)

TTTTGTAATACGACTCACTATAGGGCGGCCGGAATTCGTCGACTGGATCCGGTACCGAGGAGATCTGCC  
GCC**CGATCGCC**

ATGGCTTTGGGAGTTCCAATATCAGTCTATCTTTTATTCAACGCAATGACAGCACTGACCGAAGAGGCAG  
CCGTGACTGTAACACCTCCAATCACAGCCAGCAAGCTGACAACATAGAAGGACCCATAGCCTTGAAGTT  
CTCACACCTTTGCCTGGAAGATCATAACAGTTACTGCATCAACGGTGCTTGTGCATTCCACCATGAGCTA  
GAGAAAGCCATCTGCAGGTGTTTTACTGGTTATACTGGAGAAAGGTGTGAGCACTTGACTTTAACTTCAT  
ATGCTGTGGATTCTTATGAAAAATACATTGCAATTGGGATTGGTGTGGATTACTATTAAGTGGTTTTCT  
TGTTATTTTTACTGCTATATAAGAAAGAGGTATGAAAAAGACAAAATA

**ACGCGT**ACGCGGCCGCTCGAGCAGAAACTCATCTCAGAAGAGGATCTGGCAGCAAATGATATCCTGGATT  
ACAAGGATGACGACGATAAGGTTTAA

**Protein Sequence:** >RC214501 representing NM\_001013442  
Red=Cloning site Green=Tags(s)

MALGVPIISVYLLFNAMTALTEEAAVTVTPPITAQQADNIEGPIALKFSLCLLEDHNSYINGACAFHHEL  
EKAICRCFTGYTGERCEHLTLTSYAVDSYEKYIAIGIGVLLLSGFLVIFYCYIRKRYEKDKI

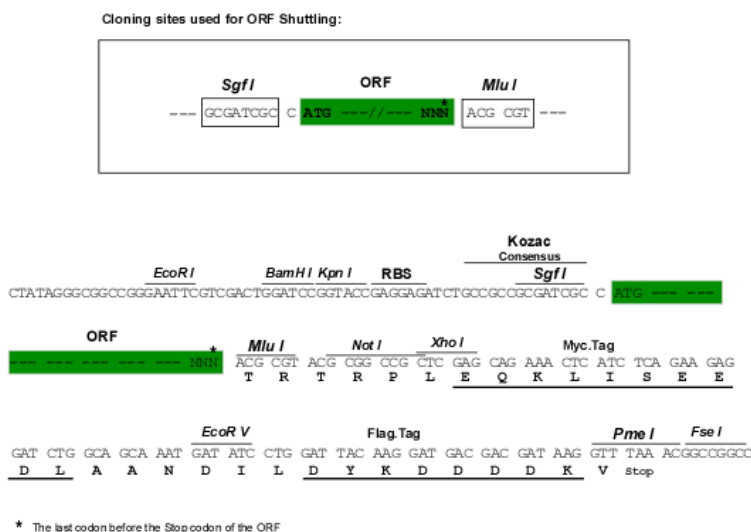
**TR**TRPLEQKLISEEDLAANDILDYKDDDDKV

**Chromatograms:** [https://cdn.origene.com/chromatograms/mk8004\\_e12.zip](https://cdn.origene.com/chromatograms/mk8004_e12.zip)

**Restriction Sites:** SgfI-MluI



[View online »](#)

**Cloning Scheme:**


**ACCN:** NM\_001013442

**ORF Size:** 399 bp

**OTI Disclaimer:** The molecular sequence of this clone aligns with the gene accession number as a point of reference only. However, individual transcript sequences of the same gene can differ through naturally occurring variations (e.g. polymorphisms), each with its own valid existence. This clone is substantially in agreement with the reference, but a complete review of all prevailing variants is recommended prior to use. [More info](#)

**OTI Annotation:** This clone was engineered to express the complete ORF with an expression tag. Expression varies depending on the nature of the gene.

**Components:** The ORF clone is ion-exchange column purified and shipped in a 2D barcoded Matrix tube containing 10ug of transfection-ready, dried plasmid DNA (reconstitute with 100 ul of water).

**Reconstitution Method:**

1. Centrifuge at 5,000xg for 5min.
2. Carefully open the tube and add 100ul of sterile water to dissolve the DNA.
3. Close the tube and incubate for 10 minutes at room temperature.
4. Briefly vortex the tube and then do a quick spin (less than 5000xg) to concentrate the liquid at the bottom.
5. Store the suspended plasmid at -20°C. The DNA is stable for at least one year from date of shipping when stored at -20°C.

**RefSeq:** [NM\\_001013442.1](#), [NP\\_001013460.1](#)

**RefSeq Size:** 847 bp

**RefSeq ORF:** 401 bp

**Locus ID:** 255324

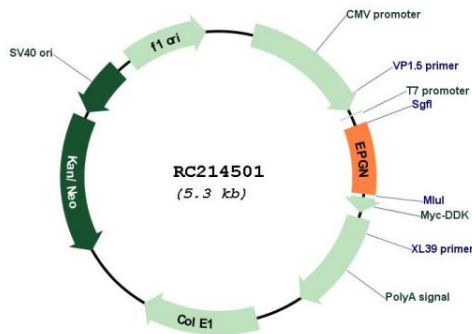
**Cytogenetics:** 4q13.3

**Protein Families:** Transmembrane

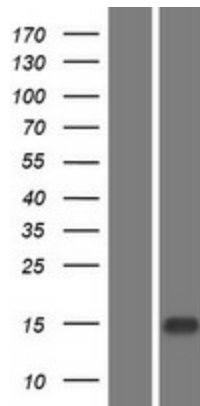
**MW:** 14.6 kDa

**Gene Summary:** The protein encoded by this gene is a member of the epidermal growth factor family. Members of this family are ligands for the epidermal growth factor receptor and play a role in cell survival, proliferation and migration. This protein has been reported to have high mitogenic activity but low affinity for its receptor. Expression of this transcript and protein have been reported in cancer specimens of the breast, bladder, and prostate. Alternative splicing results in multiple transcript variants. [provided by RefSeq, Aug 2012]

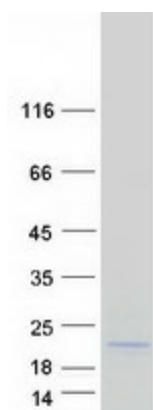
**Product images:**



Circular map for RC214501



Western blot validation of overexpression lysate (Cat# [LY422978]) using anti-DDK antibody (Cat# [TA50011-100]). Left: Cell lysates from untransfected HEK293T cells; Right: Cell lysates from HEK293T cells transfected with RC214501 using transfection reagent MegaTran 2.0 (Cat# [TT210002]).



Coomassie blue staining of purified EPGN protein (Cat# [TP314501]). The protein was produced from HEK293T cells transfected with EPGN cDNA clone (Cat# RC214501) using MegaTran 2.0 (Cat# [TT210002]).