

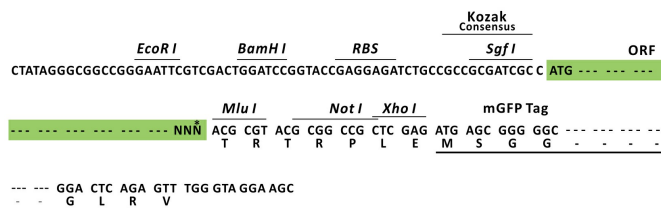
## Product datasheet for RC214500L4

### CNTN4 (NM\_175612) Human Tagged Lenti ORF Clone

#### Product data:

Product Type:	Expression Plasmids
Product Name:	CNTN4 (NM_175612) Human Tagged Lenti ORF Clone
Tag:	mGFP
Symbol:	CNTN4
Synonyms:	AXCAM; axonal-associated cell adhesion molecule; axonal cell adhesion molecule; BIG-2; CNTN4A; contactin 4; MGC33615; neural cell adhesion protein BIG-2; OTTHUMP00000147566; OTTHUMP00000147567
Mammalian Cell Selection:	Puromycin
Vector:	pLenti-C-mGFP-P2A-Puro (PS100093)
E. coli Selection:	Chloramphenicol (34 ug/mL)
ORF Nucleotide Sequence:	The ORF insert of this clone is exactly the same as(RC214500).
Restriction Sites:	SgfI-MluI
Cloning Scheme:	

Cloning sites used for ORF Shuttling:



\* The last codon before the Stop codon of the ORF.

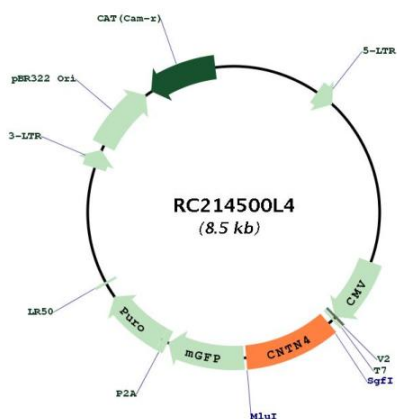
ACCN: NM\_175612



[View online »](#)

<b>ORF Size:</b>	846 bp
<b>OTI Disclaimer:</b>	The molecular sequence of this clone aligns with the gene accession number as a point of reference only. However, individual transcript sequences of the same gene can differ through naturally occurring variations (e.g. polymorphisms), each with its own valid existence. This clone is substantially in agreement with the reference, but a complete review of all prevailing variants is recommended prior to use. <a href="#">More info</a>
<b>OTI Annotation:</b>	This clone was engineered to express the complete ORF with an expression tag. Expression varies depending on the nature of the gene.
<b>Components:</b>	The ORF clone is ion-exchange column purified and shipped in a 2D barcoded Matrix tube containing 10ug of transfection-ready, dried plasmid DNA (reconstitute with 100 ul of water).
<b>Reconstitution Method:</b>	<ol style="list-style-type: none"><li>1. Centrifuge at 5,000xg for 5min.</li><li>2. Carefully open the tube and add 100ul of sterile water to dissolve the DNA.</li><li>3. Close the tube and incubate for 10 minutes at room temperature.</li><li>4. Briefly vortex the tube and then do a quick spin (less than 5000xg) to concentrate the liquid at the bottom.</li><li>5. Store the suspended plasmid at -20°C. The DNA is stable for at least one year from date of shipping when stored at -20°C.</li></ol>
<b>RefSeq:</b>	<a href="#">NM_175612.1</a> , <a href="#">NP_783301.1</a>
<b>RefSeq Size:</b>	3072 bp
<b>RefSeq ORF:</b>	848 bp
<b>Locus ID:</b>	152330
<b>Cytogenetics:</b>	3p26.3-p26.2
<b>Protein Families:</b>	Secreted Protein
<b>MW:</b>	29.6 kDa
<b>Gene Summary:</b>	This gene encodes a member of the contactin family of immunoglobulins. Contactins are axon-associated cell adhesion molecules that function in neuronal network formation and plasticity. The encoded protein is a glycosylphosphatidylinositol-anchored neuronal membrane protein that may play a role in the formation of axon connections in the developing nervous system. Deletion or mutation of this gene may play a role in 3p deletion syndrome and autism spectrum disorders. Alternative splicing results in multiple transcript variants. [provided by RefSeq, May 2011]

Product images:



Circular map for RC214500L4