

## Product datasheet for **RC214496**

### CDC25C (NM\_022809) Human Tagged ORF Clone

#### Product data:

Product Type:	Expression Plasmids
Product Name:	CDC25C (NM_022809) Human Tagged ORF Clone
Tag:	Myc-DDK
Symbol:	CDC25C
Synonyms:	CDC25; PPP1R60
Mammalian Cell Selection:	Neomycin
Vector:	pCMV6-Entry (PS100001)
E. coli Selection:	Kanamycin (25 ug/mL)
ORF Nucleotide Sequence:	>RC214496 representing NM_022809 Red=Cloning site Blue=ORF Green=Tags(s)

TTTTGTAATACGACTCACTATAGGGCGGCCGGAATTCGTCGACTGGATCCGGTACCGAGGAGATCTGCC  
GCC**CGATCGC**C

ATGTCTACGGAACCTTTCTCATCCACAAGAGAGGAAGGAAGCTCTGGCTCAGGACCCAGTTTATAGTCTA  
ATCAAAGGAAAATGTTAAACCTGCTCCTGGAGAGAGACTTCCTTTACCGTCTGTCCAGATGTCCTAG  
AACTCCAGTGGGCAAATTTCTGGTGATTCTGCAAACTAAGCATTGTCTGGGTACCTGGATTCTTC  
AGGACTTCAGGAAGTGCATTTAGCTGGGATGACAATGGAACTTGGTGGACAGTGAATGAAATATTTGG  
GCAGTCCCATTACTACTGTTCCAAAATTGGATAAAAAATCAAACCTAGGAGAAGACCAGGCAGAAGAGAT  
TTCAGATGAATTAATGGAGTTTTCCCTGAAAGATCAAGAAGCAAAGGTGAGCAGAAGTGGCCTATATCGC  
TCCCCGTCGATGCCAGAGAACTGAACAGGCCAAGACTGAAGCAGGTGGAAAAATCAAGGACAACACAA  
TACCAGATAAAGTTAAAAAAGTATTTTTCTGGCCAAGGAAAGCTCAGGAAGGGCTTATGTTTAAAGAA  
GACAGTCTCTGTGTGACATTACTATCACTCAGATGCTGGAGGAAGATTCTAACCAGGGGCACCTGATT  
GGTATTTTTCCAAGGTATGTGCGCTGCCAACCGTGTGAGGAAACACCAAGATCTGAAGTATGTCAACC  
CAGAAACAGTGGCTGCCTTACTGTGGGGAAGTCCAGGGTCTGATTGAGAAGTTTTATGTCATTGATTG  
TCGCTATCCATATGAGTATCTGGGAGGACATCCAGGGAGCCTAAACTTATATAGTCAGGAAGAACTG  
TTAACTTCTTTCTGAAGAAGCCATCGTCCCTTTGGACCCAGAAGAGAATAATCATCGTGTTCACCT  
GTGAATTCCTCCTCAGAGAGGGGGCCCCGAATGTGCCGCTGTCTGCGTGAAGAGGACAGGTCTCTGAACCA  
GTATCCTGCATTGTAATCCAGAGCTATATATCCTTAAAGGCGGCTACAGAGACTTCTTTCCAGAATAT  
ATGGAAGTGTGTGAACCACAGAGCTACTGCCCTATGCATCATCAGGACCACAAGACTGAGTTGCTGAGGT  
GTCGAAGCCAGAGCAAAGTGCAGGAAGGGGAGCGGCAGCTGCGGGAGCAGATTGCCCTTCTGGTGAAGGA  
CATGAGCCCA

**ACGCGT**ACGCGGCCGCTCGAGCAGAACTCATCTCAGAAGAGGATCTGGCAGCAAATGATATCTGGATT  
ACAAGGATGACGACGATAAGGTTTAA



[View online »](#)

**Protein Sequence:** >RC214496 representing NM\_022809  
 Red=Cloning site Green=Tags(s)

MSTELFSSTREEGSSGSGPSFRSNQRKMLNLLERDTSFTVCPDVPRTVPVKFLGDSANLSILSGSPGFF  
 RTSGSAFSWDDNGNLVDSEMKYLGSPITTVPKLDKNPNLGEDQAEIISDELMEFSLKDQEAQVSRSGLYR  
 SPSMPENLNRPLKQVEKFKDNTIPDKVKKKYFSGQGLRKGLCLKKTIVSLCDITITQMLEEDSNQGHLI  
 GDFSKVCALPTVSGKHQDLKYVNPETVAALLSGKFQGLIEKFYVIDCRYPYEYLGHHIQGALNLYSQEEL  
 FNFFLKPIVPLDTQKRIIIVFHCEFSSEGRPMCRCLREEDRSLNQYPALYYPELYILKGGYRDFPEY  
 MELCEPQSYCPMHQDHKTELLRCRSQSKVQEGERQLREQIALLVKDMSP

TRTRPLEQKLISEEDLAANDILDYKDDDDKV

**Chromatograms:** [https://cdn.origene.com/chromatograms/mk8057\\_d02.zip](https://cdn.origene.com/chromatograms/mk8057_d02.zip)

**Restriction Sites:** SgfI-MluI

**Cloning Scheme:**



**ACCN:** NM\_022809

**ORF Size:** 1200 bp

**OTI Disclaimer:** The molecular sequence of this clone aligns with the gene accession number as a point of reference only. However, individual transcript sequences of the same gene can differ through naturally occurring variations (e.g. polymorphisms), each with its own valid existence. This clone is substantially in agreement with the reference, but a complete review of all prevailing variants is recommended prior to use. [More info](#)

**OTI Annotation:** This clone was engineered to express the complete ORF with an expression tag. Expression varies depending on the nature of the gene.

**Components:** The ORF clone is ion-exchange column purified and shipped in a 2D barcoded Matrix tube containing 10ug of transfection-ready, dried plasmid DNA (reconstitute with 100 ul of water).

**Reconstitution Method:**

1. Centrifuge at 5,000xg for 5min.
2. Carefully open the tube and add 100ul of sterile water to dissolve the DNA.
3. Close the tube and incubate for 10 minutes at room temperature.
4. Briefly vortex the tube and then do a quick spin (less than 5000xg) to concentrate the liquid at the bottom.
5. Store the suspended plasmid at -20°C. The DNA is stable for at least one year from date of shipping when stored at -20°C.

**RefSeq:** [NM\\_022809.3](#), [NP\\_073720.1](#)

**RefSeq Size:** 1896 bp

**RefSeq ORF:** 1203 bp

**Locus ID:** 995

**UniProt ID:** [P30307](#)

**Cytogenetics:** 5q31.2

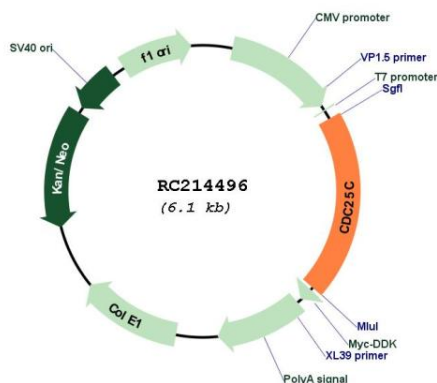
**Protein Families:** Druggable Genome, Phosphatase, Stem cell - Pluripotency

**Protein Pathways:** Cell cycle, Oocyte meiosis, Progesterone-mediated oocyte maturation

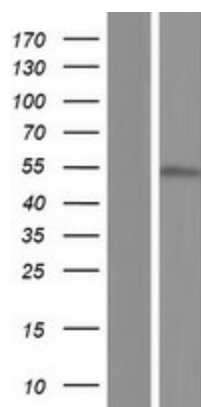
**MW:** 45.4 kDa

**Gene Summary:** This gene encodes a conserved protein that plays a key role in the regulation of cell division. The encoded protein directs dephosphorylation of cyclin B-bound CDC2 and triggers entry into mitosis. It also suppresses p53-induced growth arrest. Multiple alternatively spliced transcript variants of this gene have been described. [provided by RefSeq, Dec 2015]

## Product images:



Circular map for RC214496



Western blot validation of overexpression lysate (Cat# [LY411554]) using anti-DDK antibody (Cat# [TA50011-100]). Left: Cell lysates from untransfected HEK293T cells; Right: Cell lysates from HEK293T cells transfected with RC214496 using transfection reagent MegaTran 2.0 (Cat# [TT210002]).