

Product datasheet for RC214481

BTBD11 (NM_152322) Human Tagged ORF Clone

Product data:

Product Type:	Expression Plasmids
Product Name:	BTBD11 (NM_152322) Human Tagged ORF Clone
Tag:	Myc-DDK
Symbol:	BTBD11
Synonyms:	ANK-repeat BTB domain containing protein; BTB (POZ) domain containing 11; FLJ33957; FLJ33957, FLJ42845; FLJ42845
Mammalian Cell Selection:	Neomycin
Vector:	pCMV6-Entry (PS100001)
E. coli Selection:	Kanamycin (25 ug/mL)
ORF Nucleotide Sequence:	>RC214481 representing NM_152322 Red=Cloning site Blue=ORF Green=Tags(s)

TTTTGTAATACGACTCACTATAGGGCGGCCGGAATTCGTCGACTGGATCCGGTACCGAGGAGATCTGCC
GCCGCGATCGCC

ATGCTGTGTTACATTTCTGGTAGAAGGAAGACCATTTATGCTCACAAAGTGCTGTTATTTACAGCCT
CTCCAAGTTCAAAGCACTCCTCTCCAGCAAGCCGACAAATGATGGCACCTGCATAGAGATTGGTTATGT
GAAATACTCCATCTTTCAGCTGGTTATGCAGTATCTCTACTATGGTGGCCAGAGTCACTGCTCATTAAA
AACAAATGAGATCATGGAGCTTCTGTCTGCTGCTAAGTTTTCCAGCTGGAGGCTTTCAGCGACTGTG
AGATTATCTGTGCGAAAAGCATCAATACCGACAACCTGTGTGGATATTTACAACCATGCCAAGTTTCTTG
AGTCACAGAGCTCTCAGCATATTGCGAAGGCTACTTTCTCAAAAACATGATGGTCCTCATTGAAAACGAA
GCATTCAAGCAGCTCCTGTATGACAAAAATGGTGAAGGGACCGCCAGGATGTGTCAGGACTTACAGA
GGACGTTGGCCATCAGAATTCAGTCCATCCACTTGTCTTCCAAAGGTTCCGTGGTA

ACGCGTACGCGGCCGCTCGAGCAGAACTCATCTCAGAAGAGGATCTGGCAGCAAATGATATCCTGGATT
ACAAGGATGACGACGATAAGGTTTAA

Protein Sequence:	>RC214481 representing NM_152322 Red=Cloning site Green=Tags(s)
-------------------	--

MSDVTFLVEGRPFYAHKVLVFTASPRFKALLSSKPTNDGTCIEIGYVKYSIFQLVMQYL YGGPESLLIK
NNEIMELL SAAKFFQLEALQRHCEIICAKSINTDNCVDIYNHAKFLGVTLSAYCEGYFLKNMVLIIENE
AFKQLLYDKNGETGQDVLQDLQRTLAIIRIQSIHLSSSKGSVV

TRTRPLEQKLI SEEDLAANDILDYKDDDDKV

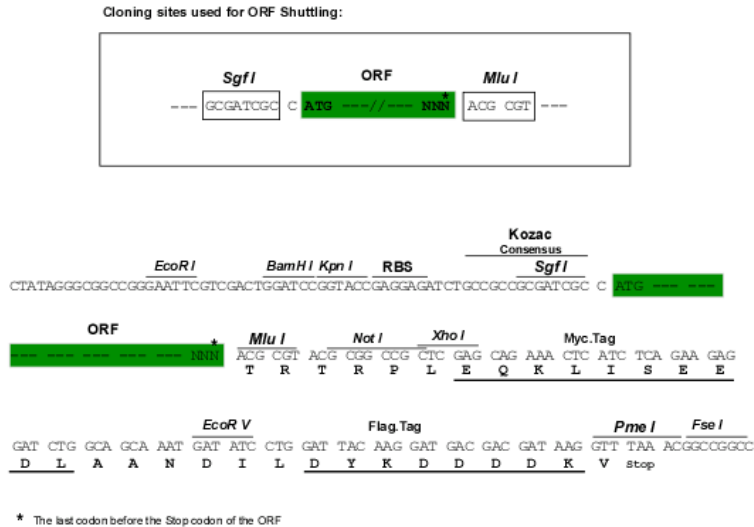


[View online »](#)

Chromatograms: https://cdn.origene.com/chromatograms/mk6481_c02.zip

Restriction Sites: SgfI-MluI

Cloning Scheme:



ACCN: NM_152322

ORF Size: 549 bp

OTI Disclaimer: The molecular sequence of this clone aligns with the gene accession number as a point of reference only. However, individual transcript sequences of the same gene can differ through naturally occurring variations (e.g. polymorphisms), each with its own valid existence. This clone is substantially in agreement with the reference, but a complete review of all prevailing variants is recommended prior to use. [More info](#)

OTI Annotation: This clone was engineered to express the complete ORF with an expression tag. Expression varies depending on the nature of the gene.

Components: The ORF clone is ion-exchange column purified and shipped in a 2D barcoded Matrix tube containing 10ug of transfection-ready, dried plasmid DNA (reconstitute with 100 ul of water).

Reconstitution Method:

1. Centrifuge at 5,000xg for 5min.
2. Carefully open the tube and add 100ul of sterile water to dissolve the DNA.
3. Close the tube and incubate for 10 minutes at room temperature.
4. Briefly vortex the tube and then do a quick spin (less than 5000xg) to concentrate the liquid at the bottom.
5. Store the suspended plasmid at -20°C. The DNA is stable for at least one year from date of shipping when stored at -20°C.

RefSeq: [NM_152322.2](#), [NP_689535.2](#)

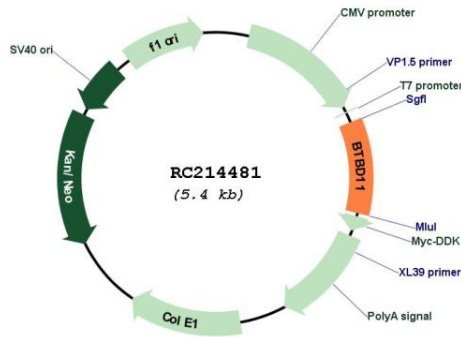
RefSeq Size: 2711 bp

RefSeq ORF: 551 bp

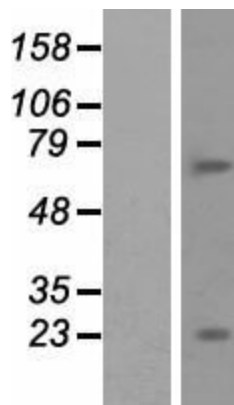
Locus ID: 121551

Cytogenetics: 12q23.3
Domains: BTB
MW: 21.1 kDa

Product images:



Circular map for RC214481



Western blot validation of overexpression lysate (Cat# [LY407648]) using anti-DDK antibody (Cat# [TA50011-100]). Left: Cell lysates from untransfected HEK293T cells; Right: Cell lysates from HEK293T cells transfected with RC214481 using transfection reagent MegaTran 2.0 (Cat# [TT210002]).