

## Product datasheet for **RC214480**

### TCP1 delta (CCT4) (NM\_006430) Human Tagged ORF Clone

#### Product data:

Product Type:	Expression Plasmids
Product Name:	TCP1 delta (CCT4) (NM_006430) Human Tagged ORF Clone
Tag:	Myc-DDK
Symbol:	TCP1 delta
Synonyms:	CCT-DELTA; Cctd; SRB
Mammalian Cell Selection:	Neomycin
Vector:	pCMV6-Entry (PS100001)
E. coli Selection:	Kanamycin (25 ug/mL)



[View online »](#)

**ORF Nucleotide Sequence:**

>RC214480 representing NM\_006430  
 Red=Cloning site Blue=ORF Green=Tags(s)

TTTTGTAATACGACTCACTATAGGGCGGCCGGGAATTCGTCGACTGGATCCGGTACCGAGGAGATCTGCC  
 GCC**GCGATCGCC**

ATGCCCGAGAATGTGCCACCCCGAGCGGGCGACTGCCGGGGCTGCCGGCGGCCCGGGAAAGGCGCCT  
 ATCAGGACCGCGACAAGCCAGCCAGATCCGCTTCAGCAACATTTCCGCCGCAAAGCGGTTGCTGATGC  
 TATTAGAACAAGCCTTGACCAAAAAGGAATGGATAAAAATGATTCAAGATGAAAAAGGTGATGTAACCATT  
 ACAAATGATGGTCTACCATTCTGAAACAAATGCAAGTATTACATCCAGCAGCCAGAATGCTGGTGGAGC  
 TGTCTAAGGCTCAAGATATAGAAGCAGGAGATGGCACCACATCAGTAGTCATCATTGCTGGCTCCCTCTT  
 AGATTCTGTACCAAGCTTCTTCAGAAAGGGATTCAACAACCATCATTCTGAGTCATTCCAGAAGGCC  
 CTGAAAAGGGCATTGAAATCTGACTGACATGTCTCGACCTGTGGAAGTGTGACAGAGAAAATTTGT  
 TAAATAGTGCAACCACTCACTGAACTCAAAGGTGGTTTCTCAGTATTCAAGTCTGCTTTCTCCAATGAG  
 TGTAATGCAGTGATGAAAGTATTGACCCAGCCACAGCCACCAGTGTAGATCTTAGAGATATTAATAA  
 GTTAAGAAGCTTGGTGGGACAATTGATGACTGTGAGTTGGTGGAAAGGGCTGGTTCTACCCAAAAAGTGT  
 CAAATTCTGGCATAACCAGAGTTGAAAAGGCCAAGATTGGGCTTATTCAGTTTTGCTTATCTGCTCCCAA  
 AACAGACATGGATAATCAATAGTGGTTTCTGACTATGCCAGATGGACCGAGTGTGCGAGAAGAGAGA  
 GCCTATATTTTAAATTTAGTGAAGCAAATTAACAAAACAGGATGTAATGCCTTCTCATACAGAAATCTA  
 TTCTAAGAGATGCTCTTAGTGATCTTGCATTACACTTTCTGAATAAAATGAAGATCATGGTGATTAAGGA  
 TATTGAAAGAGAAGACATTGAATTCATTTGTAAGACAATTGGAACCAAGCCAGTGTCTCATATTGACCAA  
 TTTACTGCTGACATGCTGGGTTCTGCTGAGTTAGCTGAGGAGGTCAATTTAAATGGTTCTGGCAAAGTGC  
 TCAAGATTACAGGCTGTGCCAGCCCTGGAAAAACAGTTACAATTGTTGTTGCTGGTTCTAACAAACTGGT  
 GATTGAAGAAGCTGAGCGCTCCATTCATGATGCCCTATGTGTTATTCGTTGTTTAGTGAAGAAGAGGGCT  
 CTTATTGCAGGAGGTGGTCTCCAGAAATAGAGTTGGCCCTACGATTAAGTGAATATTCAGAACACTGA  
 GTGGTATGGAATCCTACTGCGTTCTGCTTTTGCAGATGCTATGGAGGTCAATCCATCTACACTAGCTGA  
 AAATGCCGGCCTGAATCCATTTCTACAGTAACAGAACTAAGAAACCGGCATGCCAGGGAGAAAAAAGT  
 GCAGGCATTAATGTCCGAAAGGGTGGATTTTCCAACATTTGGAGGAACTGGTTGTCCAGCCTCTGTTGG  
 TATCAGTCAGTCTGACTCTTGAACAGAACTGTTCCGAGCATTCTGAAAAATAGATGATGTGGTAA  
 CACTCGA

**ACGCGT**ACGCGGCCGCTCGAGCAGAACTCATCTCAGAAGAGGATCTGGCAGCAAATGATATCCTGGATT  
 ACAAGGATGACGACGATAAGGTTTAA

**Protein Sequence:**

>RC214480 representing NM\_006430  
 Red=Cloning site Green=Tags(s)

MPENVAPRSGATAGAAGGRGKGYQDRDKPAQIRFSNISAAKAVADAIRTSLGPKGMDKMIQDGKGDVTI  
 TNDGATILKQMQLHPAARMLVELSKAQDIEAGDGTTSSVIIAGSLLDSTKLLQKGIHPTIISESFQKA  
 LEKGIEILTDMSRPVELSDRELLNSATSLNSKVVSQYSSLLSPMSVNAV MKVIDPATATSVDLRDIKI  
 VKKLGITDDCELVGLVLTQKVSNSGITRVEKAKIGLIQFCLSAPKTDMDNQIVVSDYAMDRVLRER  
 AYILNLVKQIKKTGCNVLLIQKSILRDALSDLALHFLNKMIMVIKDIEREDIEFICKTIGTKPVAHIDQ  
 FTADMLGSAELAEVNLNGSGKLLKITGCASPGKTVTIVVIRGNSKLVIEEAERSIHDALCVIRCLVKKRA  
 LIAGGGAPEIELALRLTEYSRTL SGMESYCVRAFADAMEVIPSTLAENAGLNPISVTELRNRHAQGEKT  
 AGINVRKGGISNILEELVVQPLLVSVALTLATETVRSILKIDDDVNR

**TR**TRPLEQKLISEEDLAANDILDYKDDDDKV

**Chromatograms:**

[https://cdn.origene.com/chromatograms/mk6200\\_f06.zip](https://cdn.origene.com/chromatograms/mk6200_f06.zip)

**Restriction Sites:**

Sgfl-Mlul

**Cloning Scheme:**

**ACCN:** NM\_006430

**ORF Size:** 1617 bp

**OTI Disclaimer:** The molecular sequence of this clone aligns with the gene accession number as a point of reference only. However, individual transcript sequences of the same gene can differ through naturally occurring variations (e.g. polymorphisms), each with its own valid existence. This clone is substantially in agreement with the reference, but a complete review of all prevailing variants is recommended prior to use. [More info](#)
**OTI Annotation:** This clone was engineered to express the complete ORF with an expression tag. Expression varies depending on the nature of the gene.

**Components:** The ORF clone is ion-exchange column purified and shipped in a 2D barcoded Matrix tube containing 10ug of transfection-ready, dried plasmid DNA (reconstitute with 100 ul of water).

- Reconstitution Method:**
1. Centrifuge at 5,000xg for 5min.
  2. Carefully open the tube and add 100ul of sterile water to dissolve the DNA.
  3. Close the tube and incubate for 10 minutes at room temperature.
  4. Briefly vortex the tube and then do a quick spin (less than 5000xg) to concentrate the liquid at the bottom.
  5. Store the suspended plasmid at -20°C. The DNA is stable for at least one year from date of shipping when stored at -20°C.

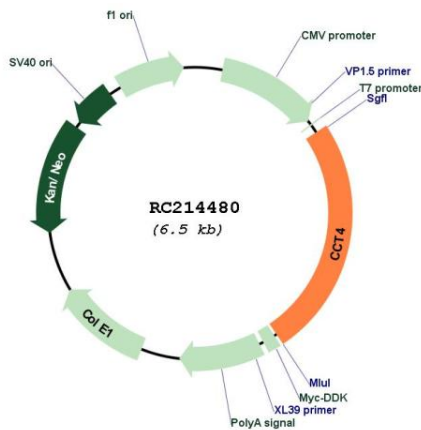
**RefSeq:** [NM\\_006430.4](#)
**RefSeq Size:** 2349 bp

**RefSeq ORF:** 1620 bp

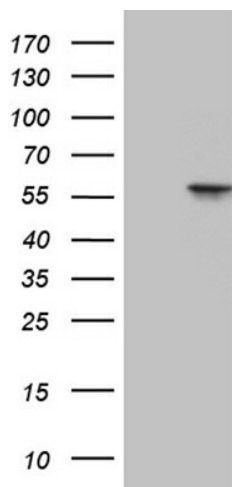
**Locus ID:** 10575

**UniProt ID:** [P50991](#)

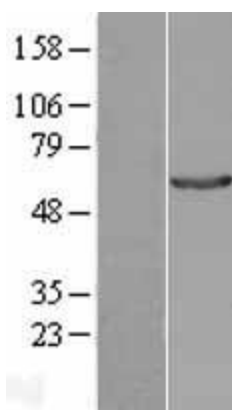
<b>Cytogenetics:</b>	2p15
<b>Domains:</b>	cpn60_TCP1
<b>Protein Families:</b>	Druggable Genome
<b>MW:</b>	57.7 kDa
<b>Gene Summary:</b>	The chaperonin containing TCP1 (MIM 186980) complex (CCT), also called the TCP1 ring complex, consists of 2 back-to-back rings, each containing 8 unique but homologous subunits, such as CCT4. CCT assists the folding of newly translated polypeptide substrates through multiple rounds of ATP-driven release and rebinding of partially folded intermediate forms. Substrates of CCT include the cytoskeletal proteins actin (see MIM 102560) and tubulin (see MIM 191130), as well as alpha-transducin (MIM 139330) (Won et al., 1998 [PubMed 9819444]).[supplied by OMIM, Mar 2008]

**Product images:**


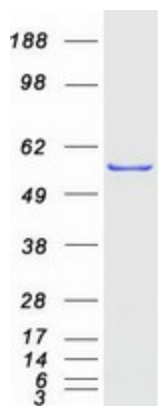
Circular map for RC214480



HEK293T cells were transfected with the pCMV6-ENTRY control (Cat# [PS100001], Left lane) or pCMV6-ENTRY CCT4 (Cat# RC214480, Right lane) cDNA for 48 hrs and lysed. Equivalent amounts of cell lysates (5 ug per lane) were separated by SDS-PAGE and immunoblotted with anti-CCT4 (Cat# [TA810867])(1:2000). Positive lysates [LY401934] (100ug) and [LC401934] (20ug) can be purchased separately from OriGene.



Western blot validation of overexpression lysate (Cat# [LY401934]) using anti-DDK antibody (Cat# [TA50011-100]). Left: Cell lysates from untransfected HEK293T cells; Right: Cell lysates from HEK293T cells transfected with RC214480 using transfection reagent MegaTran 2.0 (Cat# [TT210002]).



Coomassie blue staining of purified CCT4 protein (Cat# [TP314480]). The protein was produced from HEK293T cells transfected with CCT4 cDNA clone (Cat# RC214480) using MegaTran 2.0 (Cat# [TT210002]).