

## Product datasheet for **RC214475**

### **TSPAN4 (NM\_001025235) Human Tagged ORF Clone**

#### Product data:

**Product Type:** Expression Plasmids  
**Product Name:** TSPAN4 (NM\_001025235) Human Tagged ORF Clone  
**Tag:** Myc-DDK  
**Symbol:** TSPAN4  
**Synonyms:** NAG-2; NAG2; TETRASPAN; TM4SF7; TSPAN-4  
**Mammalian Cell Selection:** Neomycin  
**Vector:** pCMV6-Entry (PS100001)  
**E. coli Selection:** Kanamycin (25 ug/mL)  
**ORF Nucleotide Sequence:** >RC214475 ORF sequence  
**Red=Cloning site Blue=ORF Green=Tags(s)**

TTTTGTAATACGACTCACTATAGGGCGGCCGGAATTCGTCGACTGGATCCGGTACCGAGGAGATCTGCC  
GCC**CGATCGCC**

ATGGCGCGCCTGCCTCCAGGCCGTC AAGTACCTCATGTTGCGCCTTCAACCTGCTCTTCTGGCTGGGAG  
GCTGTGGCGTGTGGGTGTGGCATCTGGCTGGCCGCCACACAGGGGAGCTTCGCCACGCTGTCTCTTC  
CTTCCCGTCCCTGTCGGCTGCCAACCTGCTCATCATCACCGGCCCTTTGTCATGGCCATCGCTTCGTG  
GGCTGCCTGGGTGCCATCAAGGAGAACAAGTGCCTCCTGCTCACTTTCTCCTGCTGCTGCTGCTGGTGT  
TCCTGCTGGAGGCCACCATCGCCATCCTCTTCTCGCCTACACGGACAAGATTGACAGGTATGCCAGCA  
AGACCTGAAGAAAGGCTTGCACCTGTACGGCACGAGGGCAACGTGGGCCTCACCAACGCCTGGAGCATC  
ATCCAGACCGACTTCCGCTGCTGTGGCGTCTCCAACACTACTGACTGGTTCGAGGTGTACAACGCCACGC  
GGGTACCTGACTCCTGCTGCTTGGAGTTCAGTGAGAGCTGTGGGCTGCACGCCCCCGGCACCTGGTGGAA  
GGCGCCGTGCTACGAGACGGTGAAGGTGTGGCTCAGGAGAACCTGCTGGCTGTGGGCATCTTTGGGCTG  
TGCACGGCGTGGTGCAGATCCTGGGCCTGACCTCGCCATGACCATGTACTGCCAAGTGGTCAAGGCAG  
ACACCTACTGCGCG

**ACGCGT**ACGCGGCCGCTCGAGCAGAACTCATCTCAGAAGAGGATCTGGCAGCAAATGATATCCTGGATT  
ACAAGGATGACGACGATAAGGTTTAA



[View online »](#)

**Protein Sequence:** >RC214475 protein sequence  
 Red=Cloning site Green=Tags(s)

MARACLQAVKYLMFANLLFWLGGCGVLGVGIWLAATQGSFATLSSSFPSLSAANLLIITGAFVMAIGFV  
 GCLGAIKENKCLLLTFFLLLLLVFLLEATIAILFFAYTDKIDRYAQDLKKGLHLYGTQGNVGLTNAWSI  
 IQTDFRCCGVSNYTDWFEVYNATRVDPDSCCLEFSESCGLHAPGTWWKAPCYETVKVWLQENLLAVGIFGL  
 CTALVQILGLTFAMTMYCQVVKADTYCA

TRTRPLEQKLISEEDLAANDILDYKDDDDKV

**Chromatograms:** [https://cdn.origene.com/chromatograms/mk6376\\_d09.zip](https://cdn.origene.com/chromatograms/mk6376_d09.zip)

**Restriction Sites:** SgfI-MluI

**Cloning Scheme:**

Cloning sites used for ORF Shuttling:



\* The last codon before the Stop codon of the ORF

**ACCN:** NM\_001025235

**ORF Size:** 714 bp

**OTI Disclaimer:** The molecular sequence of this clone aligns with the gene accession number as a point of reference only. However, individual transcript sequences of the same gene can differ through naturally occurring variations (e.g. polymorphisms), each with its own valid existence. This clone is substantially in agreement with the reference, but a complete review of all prevailing variants is recommended prior to use. [More info](#)

**OTI Annotation:** This clone was engineered to express the complete ORF with an expression tag. Expression varies depending on the nature of the gene.

**Components:** The ORF clone is ion-exchange column purified and shipped in a 2D barcoded Matrix tube containing 10ug of transfection-ready, dried plasmid DNA (reconstitute with 100 ul of water).

**Reconstitution Method:**

1. Centrifuge at 5,000xg for 5min.
2. Carefully open the tube and add 100ul of sterile water to dissolve the DNA.
3. Close the tube and incubate for 10 minutes at room temperature.
4. Briefly vortex the tube and then do a quick spin (less than 5000xg) to concentrate the liquid at the bottom.
5. Store the suspended plasmid at -20°C. The DNA is stable for at least one year from date of shipping when stored at -20°C.

**RefSeq:** [NM\\_001025235.1](#), [NP\\_001020406.1](#)

**RefSeq Size:** 1442 bp

**RefSeq ORF:** 717 bp

**Locus ID:** 7106

**UniProt ID:** [O14817](#)

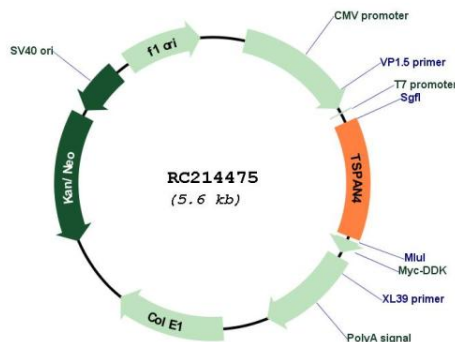
**Cytogenetics:** 11p15.5

**Protein Families:** Transmembrane

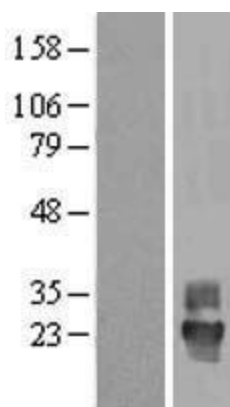
**MW:** 26.1 kDa

**Gene Summary:** The protein encoded by this gene is a member of the transmembrane 4 superfamily, also known as the tetraspanin family. Most of these members are cell-surface proteins that are characterized by the presence of four hydrophobic domains. The proteins mediate signal transduction events that play a role in the regulation of cell development, activation, growth and motility. This encoded protein is a cell surface glycoprotein and is similar in sequence to its family member CD53 antigen. It is known to complex with integrins and other transmembrane 4 superfamily proteins. Alternatively spliced transcript variants encoding different isoforms have been identified. [provided by RefSeq, Jul 2008]

### Product images:



Circular map for RC214475



Western blot validation of overexpression lysate (Cat# [LY422489]) using anti-DDK antibody (Cat# [TA50011-100]). Left: Cell lysates from untransfected HEK293T cells; Right: Cell lysates from HEK293T cells transfected with RC214475 using transfection reagent MegaTran 2.0 (Cat# [TT210002]).