

Product datasheet for **RC214471**

FAM82A1 (RMDN2) (NM_144713) Human Tagged ORF Clone

Product data:

Product Type:	Expression Plasmids
Product Name:	FAM82A1 (RMDN2) (NM_144713) Human Tagged ORF Clone
Tag:	Myc-DDK
Symbol:	FAM82A1
Synonyms:	BLOCK18; FAM82A; FAM82A1; PRO34163; PYST9371; RMD-2; RMD2; RMD4
Mammalian Cell Selection:	Neomycin
Vector:	pCMV6-Entry (PS100001)
E. coli Selection:	Kanamycin (25 ug/mL)



[View online »](#)

ORF Nucleotide Sequence:

>RC214471 representing NM_144713
 Red=Cloning site Blue=ORF Green=Tags(s)

TTTTGTAATACGACTCACTATAGGGCGGCCGGAATTCGTGACTGGATCCGGTACCGAGGAGATCTGCC
 GCC**CGGATCGCC**

ATGGGAAAGTGCTTAAGCTGCTGCAAGAGGACCAGAGCTTCCAACGATGTTCTCCAGAAGATCAAGTTA
 GTACAGACGCCAGCATCGTGGAGCCTTCTATTTCACAACCAAGTATATCTCTTGGTCATAAAACATC
 TTATCCCTGTAACACATAAAGTCAATGCAGCCAAAGCAAGTAGAAGGTTATTATCTGTATCAAGTCCA
 TCTTTCTCTGAAAGAAGATATTCTTTATTTGTTGGATTTCAAAAAAGAAATGCTTCCCCTTACTGGCAAC
 AAAGTAGAGCTAACTTTGATTCTGAAGAAGACACAGGCTTCACTGATATAAAATCTTCTCAGACCATTG
 TGGTAGCTTTATTTCCCGCAGAAGACGTTTCTCATCCCGTAAACTAAGTATAGTTTCTATTACAAGAGT
 GCCATTTTTTTGATCCTCAAGCAAGTGGCCAGAATGTGTTTAACTAAATGAAATCGAAATCTTTTCTA
 AAACCTCAAGTAATACTGATGCTAAAAACATATAACCATCTCTGCTCCTGAATATAACACTAAAAATTT
 TAAGAATTTTGAACAAACACTACTTCTCCAGCCTTTGGGAACACTATTGATACAGCCTCCTATCAACAA
 AGCACATCATCCTTCTTTCTCTTGCAAGTGATATTTCTCTCCCGATCAACAAAATGGAATTGCCAATG
 ATATTCACAAAAGGGCCAATTATGTAAGATTTAAAAGATTTCCCTTCATCCTCGTCTGAAAGTTACAG
 CACAGGTCATTCTCCAATCATGATTCCACAGCATCCCTCTCAAAGTGGAACTTTCCCATTCTCCATAAA
 GCTGGATTTTCTCATCTATAAAAAATCTGGTTGCTTTATCCCACCTCAAAGCGAATTAACCTCAGGCC
 TGTTTGAAGATGAAGACTTTGCTGTCTTGTTCGAAGTGAAGACAGATCTCACCTATTGAAATTCCTAA
 AATAAGGTATATTACAGCTAATACTGACACAGAAGAACAGAGTTTTCCAGTCCCTAAGGCATTTAACACA
 CGTGTAGAGGAATTAATTTAGATGTCCTTCTCAGAAGGTAGATCATTACGTATGAGTGAGTCTGGCA
 AGTCGGAGAGTTTTGAACACTTTCGTGACCACAAAGAAAAGTTTAGAGATGAAATAGAGTTTATGTGGCG
 ATTTGCTCGTGCTTATGGAGACATGTATGAACTATCTACAAACACACAAGAAAAGAACATTATGCTAAT
 ATTGAAAAAATTTAAGTGAAAGAGCTATTAATAGAGCACCCATGAATGGACATTGTCATCTGTGGTATG
 CAGTTTTGTGTGGCTATGTATCTGAGTTTGGGGTTTACAAAACAAAATCAACTATGGGCACCTCTTCAA
 GGAACATCTAGATATAGCAATCAAATTTTACCAGAGGAACCTTTCTATATTACCTCAAAGGGAGATAC
 TGCTATACTGTCTCAAACCTGAGCTGGATTGAGAAAAAATGGCTGCTACTCTGTTTGGAAAAATACCAT
 CTTCAACTGTACAAGAAGCTTTACACAATTTCTTAAGGCTGAAGAACTATGCCCTGGTTATTCTAATCC
 CAATTACATGTACTTAGCAAAGTGTATACTGATCTTGAGGAAAACCAGAATGCTTTGAAGTTCTGTAAT
 TTGGCTTTATTGCTTCTACTGTTACCAAAGAGGAGCTG

ACGCGTACGCGGCCGCTCGAGCAGAAACTCATCTCAGAAGAGGATCTGGCAGCAAATGATATCCTGGATT
 ACAAGGATGACGACGATAAGGTTTAA

Protein Sequence:

>RC214471 representing NM_144713
 Red=Cloning site Green=Tags(s)

MGKCLSCCKEDQSFQRCSPEQVSTDAQHRGASSISQPSISLGHKTSYSPVTHKVNAAKASRRLLSVSSP
 SFSEYRSLFVGFQKRNASPYWQSRANFDSEEDTGFTDIKSSSDHCGSFISSRRRFSRKLIVSYYS
 AIFDPPQASGQNVFNLEIEIFSKTSSNTDAKKHITISAPEYNTKNFKNFETNTTSPAFGNTIDTASYQQ
 STSSFFSLASDISSPDQQNGIANDIQQRGQLCKDLKDFLHPRPESYSTGHSPIMIPQHPSQSGTFPFLHK
 AGFSSSYKNSGCFIPPQSELTSGLFEDEFVAVLFQDEDRSSPIEIPKIRYITANTDTEEQSFVPKAFNT
 RVEELNLDVLLQKVDHLRMSSESGKSEFELLRDHKEKFRDEIEFMWRFARAYGDMYELSTNTQEKKHYAN
 IGKTLSERAINRAPMNGHCHLWYAVLCGYVSEFEGLNKINYGHLFKEHLDAIKLLPEEPFLYLLKGRY
 CYTVSKLSWIEKKMAATLFGKIPSSVQEAALHNFLKAEELCPGYSNPNYMLAKCYTDLEENQNALKFCN
 LALLLPVTKEEL

TRTRPLEQKLISEEDLAANDILDYKDDDDKV

Chromatograms:

https://cdn.origene.com/chromatograms/mk8030_h03.zip

Restriction Sites:

Sgfl-Mlul

Cloning Scheme:

ACCN: NM_144713

ORF Size: 1719 bp

OTI Disclaimer: Due to the inherent nature of this plasmid, standard methods to replicate additional amounts of DNA in E. coli are highly likely to result in mutations and/or rearrangements. Therefore, OriGene does not guarantee the capability to replicate this plasmid DNA. Additional amounts of DNA can be purchased from OriGene with batch-specific, full-sequence verification at a reduced cost. Please contact our customer care team at custsupport@origene.com or by calling 301.340.3188 option 3 for pricing and delivery.

The molecular sequence of this clone aligns with the gene accession number as a point of reference only. However, individual transcript sequences of the same gene can differ through naturally occurring variations (e.g. polymorphisms), each with its own valid existence. This clone is substantially in agreement with the reference, but a complete review of all prevailing variants is recommended prior to use. [More info](#)

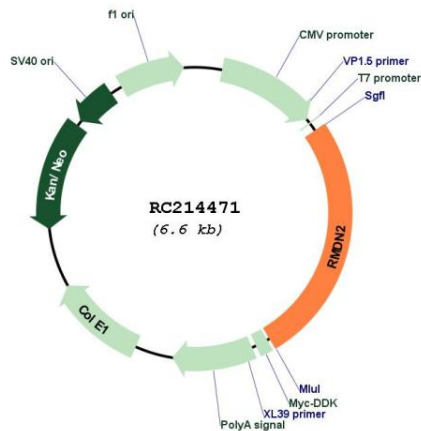
OTI Annotation: This clone was engineered to express the complete ORF with an expression tag. Expression varies depending on the nature of the gene.

Components: The ORF clone is ion-exchange column purified and shipped in a 2D barcoded Matrix tube containing 10ug of transfection-ready, dried plasmid DNA (reconstitute with 100 ul of water).

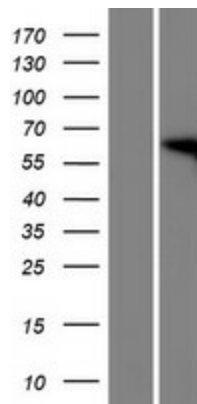
- Reconstitution Method:**
1. Centrifuge at 5,000xg for 5min.
 2. Carefully open the tube and add 100ul of sterile water to dissolve the DNA.
 3. Close the tube and incubate for 10 minutes at room temperature.
 4. Briefly vortex the tube and then do a quick spin (less than 5000xg) to concentrate the liquid at the bottom.
 5. Store the suspended plasmid at -20°C. The DNA is stable for at least one year from date of shipping when stored at -20°C.

RefSeq: [NM_144713.3](#)
 RefSeq Size: 1986 bp
 RefSeq ORF: 1722 bp
 Locus ID: 151393
 UniProt ID: [Q96LZ7](#)
 Cytogenetics: 2p22.2
 MW: 65 kDa

Product images:



Circular map for RC214471



Western blot validation of overexpression lysate (Cat# [LY408164]) using anti-DDK antibody (Cat# [TA50011-100]). Left: Cell lysates from untransfected HEK293T cells; Right: Cell lysates from HEK293T cells transfected with RC214471 using transfection reagent MegaTran 2.0 (Cat# [TT210002]).