

Product datasheet for **RC214469**

ARTS1 (ERAP1) (NM_016442) Human Tagged ORF Clone

Product data:

Product Type:	Expression Plasmids
Product Name:	ARTS1 (ERAP1) (NM_016442) Human Tagged ORF Clone
Tag:	Myc-DDK
Symbol:	ARTS1
Synonyms:	A-LAP; ALAP; APPILS; ARTS-1; ARTS1; ERAAP; ERAAP1; PILS-AP; PILSAP
Mammalian Cell Selection:	Neomycin
Vector:	pCMV6-Entry (PS100001)
E. coli Selection:	Kanamycin (25 ug/mL)



[View online »](#)

ORF Nucleotide Sequence:

>RC214469 representing NM_016442
 Red=Cloning site Blue=ORF Green=Tags(s)

TTTTGTAATACGACTCACTATAGGGCGGCCGGAATTCGTGACTGGATCCGGTACCGAGGAGATCTGCC
 GCC**CGGATCGCC**

ATGGTGTTCGCCCTCAAATGGTCCCTGCAACCATGTCATTTCTACTTTCCTACTGTTGGCTCTCT
 TAACTGTGCCACTCCTTCATGGTGTGAGAGCACTGAAGCATCTCCAAAACGTAGTGATGGGACACCATT
 TCCTTGGAAATAAAATACGACTTCCTGAGTACGTATCCAGTTTCATTATGATCTCTTGATCCATGCAAAAC
 CTTACCACGCTGACCTTCTGGGGAACACGAAAGTAGAAATCACAGCCAGTCAGCCCACCAGCACCATCA
 TCCTGCATAGTACCACCTGCAGATATCTAGGGCCACCCTCAGGAAGGGAGCTGGAGAGAGGCTATCGGA
 AGAACCCCTGCAGGTCTGGAACACCCCGTCAGGAGCAAATGCACTGCTGGCTCCCGAGCCCTCCTT
 GTCGGGCTCCCGTACACAGTTGTCATTCCTATGCTGGCAATCTTCGGAGACTTCCACGGATTTTACA
 AAAGCACCTACAGAACCAAGGAAGGGAACTGAGGATACTAGCATCAACACAATTTGAACCCACTGCAGC
 TAGAATGGCCTTCCCTGCTTTGATGAACCTGCCTTCAAAGCAAATTTCAATCAAATTTAGAAGAGAG
 CCAAGGCACCTAGCCATCTCCAATATGCCATTGGTGAAATCTGTGACTGTTGCTGAAGGACTCATAGAAG
 ACCATTTTGATGTCAGTGAAGATGAGCACCTATCTGGTGGCCTTCATCATTTTCAGATTTTGAGTCTGT
 CAGCAAGATAACCAAGAGTGGAGTCAAGTTTCTGTTTATGCTGTGCCAGACAAGATAAATCAAGCAGAT
 TATGCACTGGATGCTGCGGTGACTCTTCTAGAATTTTATGAGGATTATTTTCAGCATACCGTATCCCTAC
 CCAAACAAGATCTTGCTGCTATTCGACTTTCAGTCTGGTGTATGGAAAACCTGGGGACTGACAACATA
 TAGAGAATCTGCTCTGTTGTTGATGCAGAAAAGTCTTCTGCATCAAGTAAGCTTGGCATCAATGACT
 GTGGCCCATGAAGTGGCTCACCAGTGGTTGGGAACTGGTCACTATGGAATGGTGAATGATCTTTGGC
 TAAATGAAGGATTTGCCAAATTTATGGAGTTTGTGTCTGTCAGTGTGACCCATCTGCAACCTGAAAGTTGG
 AGATTATTTCTTTGGCAAATGTTTTGACGCAATGGAGGTAGATGCTTTAAATTCCTCACACCCTGTGTCT
 ACACCTGTGAAAATCCTGCTCAGATCCGGGAGATGTTTGTATGATAAGGGAGCTTGTA
 TTCTGAATATGCTAAGGGAGTATCTTAGTGTGACGCATTTAAAAGTGGTATTGTACAGTATCTCCAGAA
 GCATAGCTATAAAAAACAAAAACGAGGACCTGTGGGATAGTATGGCAAGTATTTGCCCTACAGATGGT
 GTAAAAGGGATGGATGGCTTTTGTCTAGAAAGTCAACATTCATCTTCATCCTCACATTGGCATCAGGAAG
 GGGTGGATGTGAAAACCATGATGAACACTTGGACACTGCAGAAGGGTTTTCCCTAATAACCATCACAGT
 GAGGGGGAGGAATGTACACATGAAGCAAGAGCACTACATGAAGGGCTCTGACGGCCCGCCGACACTGGG
 TACCTGTGGCATGTTCCATTGACATTCATCACCAGCAAATCCGACATGGTCCATCGATTTTGTAAAAA
 CAAAAACAGATGTGCTCATCCTCCAGAAAGAGGTGGAATGGATCAAATTTAATGTGGGCATGAATGGCTA
 TTACATTTGTGATTACGAGGATGATGGATGGGACTCTTTGACTGGCCTTTTAAAAGGAACACACACAGCA
 GTCAGCAGTAATGATCGGGCGAGTCTCATTAAACAATGCATTTTCAGCTCGTCAGCATTGGGAAGCTGTCCA
 TTGAAAAGGCCTTGGATTTATCCCTGTACTTGAACATGAAACTGAAATTTATGCCCGTGTTCAGGTTT
 GAATGAGCTGATTCCTATGTATAAGTTAATGGAGAAAAGAGATATGAATGAAGTGGAAAACCAATTCAG
 GCCTTCCTCATCAGGCTGCTAAGGGACCTCATTGATAAGCAGACATGGACAGACGAGGGCTCAGTCTCAG
 AGCGAATGCTGCGGAGTCAACTACTCTCGCCTGTGTGCACAACATCAGCCGTGCGTACAGAGGGC
 AGAAGGCTATTTAGAAAAGTGGAAAGGAATCCAATGGAAACTTGGCCTGCCTGTCGACGTGACCTGGCA
 GTGTTTGTCTGTGGGGCCAGAGCACAGAAGGCTGGGATTTTCTTTATAGTAAATATCAGTTTTCTTTGT
 CCACTACTGAGAAAAGCCAAATTTGAATTTGCCCTCTGCAGAACCACAAAATGAGAAAAGCTTCAATGGCT
 ACTAGATGAAAGCTTTAAGGGAGATAAAAATAAAAACCTCAGGAGTTTCCACAAATCTTACTACTATTGGC
 AGGAACCCAGTAGGATACCCACTGGCCTGGCAATTTCTGAGGAAAAACTGGAACAACTTGTACAAAAGT
 TTGAACCTGGCTCATCTCCATAGCCACATGGTAATGGGTACAACAAATCAATTTCCACAAGAACACG
 GCTTGAAGAGGTAAGGATTCTCAGCTCTTTGAAAGAAAATGGTTCTCAGCTCCGTTGTGCCAACAG
 ACAATTTGAACCATTTGAAGAAAACATCGGTTGGATGGATAAGAATTTTGATAAAAATCAGAGTGTGGCTGC
 AAAGTGAAGGCTTGAACATGATCCTGAAGCTGACGCAACAGGA

ACGCGTACGCGGCCGCTCGAGCAGAAACTCATCTCAGAAGAGGATCTGGCAGCAAATGATATCCTGGATT
 ACAAGGATGACGACGATAAGGTTTAA

Protein Sequence: >RC214469 representing NM_016442
Red=Cloning site Green=Tags(s)

```
MVFLPLKWSLATMSFLLSSLLALLTVSTPSWCQSTEASPKRSDGTPFPWNKIRLPEYVIPVHYDLLIHAN
LTTLTFWGTTKVEITASQPTSTIILHSHHLQISRATLRKGAGERLSEPLQVLEHPRQEIQIALLAPEPLL
VGLPYTVVIHYAGNLSETFHGFYKSTYRTKEGELRILASTQFEPPTAARMAFPFCFDEPAFKASF SIKIRRE
PRHLAISNMPLVKSVTVAEGLIEDHFDVTVKMSTYL VAFIISDFESVSKITKSGVKVSVYAVPDKINQAD
YALDAAVTLLEFYEDYFSIPYPLPKQLAAIPDFQSGAMENWGLTTYRESALLFDAEKSSASSKLGITMT
VAHEL AHQWFGNLVTMEWVNDLWLN EGF AKFMEFVS SVS VTHPELKVGDYFFGKCFDAMEVDALNSSHPVS
TPVENPAQIREMFDVSYDKGACILNMLREYLSADAFKSGIVQYLQKHSYKNTKNELDWDSMASICPTDG
VKGMDGFCRSRQHSSSSSHWHQEGVDVKTMMNTWTLQKGFPLITITVRGRNVHMKQEHYMKGSDGAPDTG
YLWHVPLTFITSKSDMVHRFL LKTKTDV LILPEEVEWIKFNVGMNGYIVHYEDDGWDSL TGLLKGHTTA
VSSNDRASLINNAFQLVSI GKL SIEKALDLSL YLKHETEIMPVFQGLNELIPMYKLMKDRMNEVETQFK
AFLIRLLRDLIDKQWTWDEGSV SERMLRSQ LLLLACVHNYQPCVQRAEGYFRKWKESNGNLSLPVDVTLA
VF AVGAQSTEGWDFLYSKYQFSL SSTEKSQIEFAL CRTQNKEKLQWLLDESFKGDKIKTQEFPPQILTLIG
RNPVGYPLAWQFLRKNWNKL VQKFELGSSSIAHMVMGTTNQFSTRTRLEEVKGF FSSLKENGSQLRCVQQ
TIETIEENIGWMDKNFDKIRVWLQSEKLEHDPEADATG
```

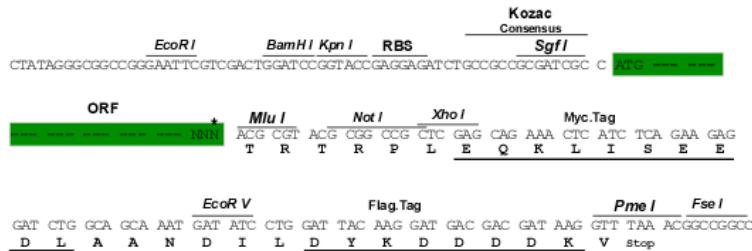
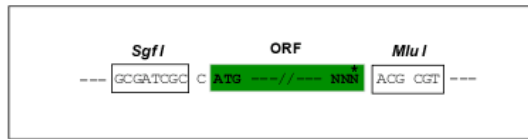
TRTRPLEQKLISEEDLAANDILDYKDDDDKV

Chromatograms: https://cdn.origene.com/chromatograms/mk6163_a02.zip

Restriction Sites: SgfI-MluI

Cloning Scheme:

Cloning sites used for ORF Shuttling:



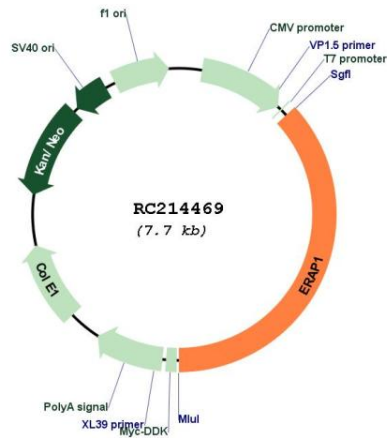
* The last codon before the Stop codon of the ORF

ACCN: NM_016442

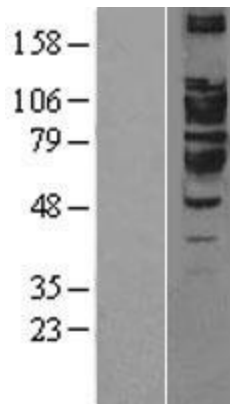
ORF Size: 2844 bp

OTI Disclaimer:	The molecular sequence of this clone aligns with the gene accession number as a point of reference only. However, individual transcript sequences of the same gene can differ through naturally occurring variations (e.g. polymorphisms), each with its own valid existence. This clone is substantially in agreement with the reference, but a complete review of all prevailing variants is recommended prior to use. More info
OTI Annotation:	This clone was engineered to express the complete ORF with an expression tag. Expression varies depending on the nature of the gene.
Components:	The ORF clone is ion-exchange column purified and shipped in a 2D barcoded Matrix tube containing 10ug of transfection-ready, dried plasmid DNA (reconstitute with 100 ul of water).
Reconstitution Method:	<ol style="list-style-type: none">1. Centrifuge at 5,000xg for 5min.2. Carefully open the tube and add 100ul of sterile water to dissolve the DNA.3. Close the tube and incubate for 10 minutes at room temperature.4. Briefly vortex the tube and then do a quick spin (less than 5000xg) to concentrate the liquid at the bottom.5. Store the suspended plasmid at -20°C. The DNA is stable for at least one year from date of shipping when stored at -20°C.
RefSeq:	NM_016442.4
RefSeq Size:	5584 bp
RefSeq ORF:	2847 bp
Locus ID:	51752
UniProt ID:	Q9NZ08
Cytogenetics:	5q15
Domains:	Peptidase_M1
Protein Families:	Druggable Genome, Protease, Secreted Protein
MW:	107.7 kDa
Gene Summary:	The protein encoded by this gene is an aminopeptidase involved in trimming HLA class I-binding precursors so that they can be presented on MHC class I molecules. The encoded protein acts as a monomer or as a heterodimer with ERAP2. This protein may also be involved in blood pressure regulation by inactivation of angiotensin II. Three transcript variants encoding two different isoforms have been found for this gene.[provided by RefSeq, Oct 2010]

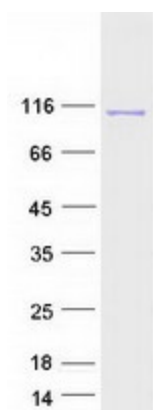
Product images:



Circular map for RC214469



Western blot validation of overexpression lysate (Cat# [LY402550]) using anti-DDK antibody (Cat# [TA50011-100]). Left: Cell lysates from untransfected HEK293T cells; Right: Cell lysates from HEK293T cells transfected with RC214469 using transfection reagent MegaTran 2.0 (Cat# [TT210002]).



Coomassie blue staining of purified ERAP1 protein (Cat# [TP314469]). The protein was produced from HEK293T cells transfected with ERAP1 cDNA clone (Cat# RC214469) using MegaTran 2.0 (Cat# [TT210002]).