

## Product datasheet for RC214468

### Archaemetzincin 2 (AMZ2) (NM\_001033569) Human Tagged ORF Clone

#### Product data:

Product Type:	Expression Plasmids
Product Name:	Archaemetzincin 2 (AMZ2) (NM_001033569) Human Tagged ORF Clone
Tag:	Myc-DDK
Symbol:	Archaemetzincin 2
Mammalian Cell Selection:	Neomycin
Vector:	pCMV6-Entry (PS100001)
E. coli Selection:	Kanamycin (25 ug/mL)
ORF Nucleotide Sequence:	>RC214468 ORF sequence Red=Cloning site Blue=ORF Green=Tags(s)

TTTTGTAATACGACTCACTATAGGGCGGCCGGGAATTCGTCGACTGGATCCGGTACCGAGGAGATCTGCCGCC**CGATCGCC**

ATGCAAAATACGGCACTCCGAACAGACACTAAAAACAGCTCTCATCTCAAAGAACCCAGTGCTTGTATCACAGTATGAGAAATTAGATGCTGGGGAACAACGTTTAAATGAATGAAGCCTTCCAGCCAGCCAGTGATCTTTGGACCCATTACCTTGCATTCTCCATCAGATTGGATCACCTCCCACCTGAGGCTCCCCAAGACTTTGAACAGTCTTTCAGTGATCCTTACAGAAAGACACCCTCTCCAAACAAACGCAGCATTATATACAGTCCA TTGGCTCTTAGGAAACACCAGAATTATCAGTGAAGAATATATTAATGGCTCACGGCTACTGTAAGCATATTTCTATGGCTTGAGAGTAAAACCTCTAGAACCAGTTCCTGTTTCTGTAACAAGATGTTCTTTAGAGTCAATGAGAACACACAACTACAAATTCATGCAGGGACATCCTGAAGTTCTTGAAAAAGAAGAAACCTGAAGATGCCTTCTGTGTTGTGGGAATAACAATGATTGATCTTTACCAAGAGACTCGTGGAAATTTGTCTTTGGACAGGCCTCTTTGACAGATGGTGTGGGATATTCAGCTTTGCCAGGTATGGCAGTGATTTTTATAGCATGCACTATAAAGGCAAAGTGAAGAAGCTCAAGAAAACATCTTCAAGTGACTATTCAATTTTCGACA ACTATTATTTCCAGAAATAACTAGTGTTTTACTACTTCGATCCTGTAAGACTTTAACCCATGAGATCGGACACATATTTGGACTGCGACACTGCCAGTGGCTTGCATGCCTCATGCAAGGCTCCAACCACTTGGAAAGAGCTGACCGGCCCTCTAAACCTTTGCCCTATCTGTTTGCACAAGTTGCAGTGTGCTGTTGGCTTCAGCATTTAGAAAGATACAAAGCACTGGTGGATTGATGATGAATCTTCTGACACACTGGAGCACTCCAGAACACAGTCACGAGGATAATGGGAATTTACCGAAACCCGTGGAAGCCTTAAAGGAATGAAAGAGTGGATAATAAAATGCCTGGCAGTTCTCCAAAAA

**ACGCGT**ACGCGGCCGCTCGAGCAGAAACTCATCTCAGAAGAGGATCTGGCAGCAAATGATATCCTGGATTACAAGGATGACGACGATAAGGTTTAA



[View online »](#)

**Protein Sequence:** >RC214468 protein sequence  
Red=Cloning site Green=Tags(s)

MQIIRHSEQLTKTALISKNPVLVSQYEKLDAGEQRLMNEAFQPASDLFGPITLHSPSDWITSHPEAPQDF  
 EQFFSDPYRKTPSPNKRSIYIQSIGSLGNTRIISEEYIKWLTGYCKAYFYGLRVKLEPVPVSVTRCSFR  
 VNENTHNLQIHAGDILKFLKKKPEDAFVVGITMIDL YPRDSWNFVFGQASLTDGVGIFSFARYGSDFY  
 SMHYKGVKLLKKTSSSDYSIFDNYIPEITSVLLLRCKTLTHEIGHIFGLRHCQWLAACLMQGSNHLEE  
 ADDRPLNLCPICLHKLQCAVGF SIVERYKALVRWIDDESSDTPGATPEHSHEDNGNLPKPVFAFKEWKEW  
 IIKCLAVLQK

TRTRPLEQKLISEEDLAANDILDYKDDDDKV

**Chromatograms:** [https://cdn.origene.com/chromatograms/mk6550\\_d09.zip](https://cdn.origene.com/chromatograms/mk6550_d09.zip)

**Restriction Sites:** Sgfl-MluI

**Cloning Scheme:**

Cloning sites used for ORF Shuttling:



\* The last codon before the Stop codon of the ORF

**ACCN:** NM\_001033569

**ORF Size:** 1080 bp

**OTI Disclaimer:** The molecular sequence of this clone aligns with the gene accession number as a point of reference only. However, individual transcript sequences of the same gene can differ through naturally occurring variations (e.g. polymorphisms), each with its own valid existence. This clone is substantially in agreement with the reference, but a complete review of all prevailing variants is recommended prior to use. [More info](#)

**OTI Annotation:** This clone was engineered to express the complete ORF with an expression tag. Expression varies depending on the nature of the gene.

**Components:** The ORF clone is ion-exchange column purified and shipped in a 2D barcoded Matrix tube containing 10ug of transfection-ready, dried plasmid DNA (reconstitute with 100 ul of water).

**Reconstitution Method:**

1. Centrifuge at 5,000xg for 5min.
2. Carefully open the tube and add 100ul of sterile water to dissolve the DNA.
3. Close the tube and incubate for 10 minutes at room temperature.
4. Briefly vortex the tube and then do a quick spin (less than 5000xg) to concentrate the liquid at the bottom.
5. Store the suspended plasmid at -20°C. The DNA is stable for at least one year from date of shipping when stored at -20°C.

**RefSeq:** [NM\\_001033569.1](#), [NP\\_001028741.1](#)

**RefSeq Size:** 1427 bp

**RefSeq ORF:** 1083 bp

**Locus ID:** 51321

**UniProt ID:** [Q86W34](#)

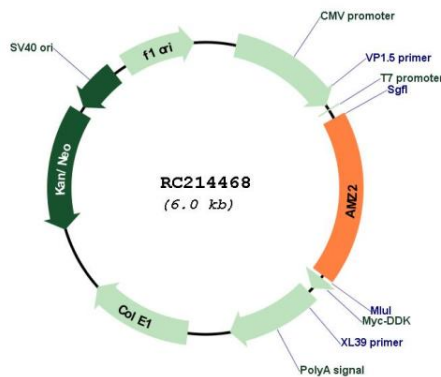
**Cytogenetics:** 17q24.2

**Protein Families:** Druggable Genome

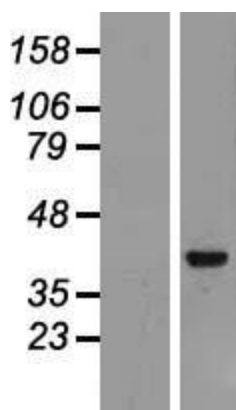
**MW:** 41.3 kDa

**Gene Summary:** The protein encoded by this gene is a zinc metalloprotease that displays some activity against angiotensin-3. The encoded protein is inhibited by the aminopeptidase inhibitor amastatin, as well as by the general inhibitors o-phenanthroline and batimastat. Defects in this gene may be associated with lung tumorigenesis. [provided by RefSeq, Oct 2016]

**Product images:**



Circular map for RC214468



Western blot validation of overexpression lysate (Cat# [LY422397]) using anti-DDK antibody (Cat# [TA50011-100]). Left: Cell lysates from untransfected HEK293T cells; Right: Cell lysates from HEK293T cells transfected with [RC215164] using transfection reagent MegaTran 2.0 (Cat# [TT210002]).