

## Product datasheet for **RC214465**

### LINGO2 (NM\_152570) Human Tagged ORF Clone

#### Product data:

Product Type:	Expression Plasmids
Product Name:	LINGO2 (NM_152570) Human Tagged ORF Clone
Tag:	Myc-DDK
Symbol:	LINGO2
Synonyms:	LERN3; LRRN6C
Mammalian Cell Selection:	Neomycin
Vector:	pCMV6-Entry (PS100001)
E. coli Selection:	Kanamycin (25 ug/mL)



[View online »](#)

**ORF Nucleotide Sequence:**

>RC214465 representing NM\_152570  
 Red=Cloning site Blue=ORF Green=Tags(s)

TTTTGTAATACGACTCACTATAGGGCGGCCGGAATTCGTCGACTGGATCCGGTACCGAGGAGATCTGCC  
 GCC**GCGATCGCC**

ATGCTTCACACGGCCATATCATGCTGGCAGCCATTCTGGGTCTGGCTGTGGTGTAAATCTTCATGGGAT  
 CCACCATTGGCTGCCCCGCTCGCTGTGAGTGCTCTGCCAGAACAATCTGTTAGCTGTACAGAAGGCG  
 ATTGATCGCCATCCCAGAGGGCATTCCCATCGAAACAAAATCTTGACCTCAGTAAAAACAGGCTAAAA  
 AGCGTCAACCCTGAAGAATTCATATCATATCCTCTGCTGGAAGAGATAGACTTGAGTGACAACATCATTG  
 CCAATGTGGAACAGGAGCATTCAACAATCTCTTTAACCTGCGTTCCTCCGCCTAAAAGGCAATCGTCT  
 AAAGCTGGTCCCTTTGGGAGTATCACGGGGCTGTCCAATCTCACTAAGCTTGACATTAGTGAGAATAAG  
 ATTGTCATTTTACTAGACTACATGTTCCAAGTCTACATAACCTGAAGTCTCTAGAAGTGGGGGACAATG  
 ATTTGGTTTATATACACAGGGCATTAGTGGGCTTCTAGCTTGAGCAGCTCACCTGGGAAATG  
 CAATTAACAGCAGTACCAACAGAAGCCCTCTCCACCTCCGAGCCTCATCAGCCTGCATCTGAAGCAT  
 CTCAATATCAACAATATGCCTGTGTATGCCTTTAAAAGATTGTTCCACCTGAAACACCTAGAGATTGACT  
 ATTTGGCCTTTACTGGATATGATGCCTGCCAATAGCCTCTACGGTCTCAACCTCACATCCCTTTAGTCAC  
 CAACCAATCTGTCTACTGTACCCTTCCTTGCCTTTAAACACCTGGTATACCTGACTCACCTTAACCTC  
 TCCTACAATCCCATCAGCACTATTGAAGCAGGCATGTTCTCTGACCTGATCCGCCTTCAGGAGCTCATA  
 TAGTGGGGGCCAGCTTCGCACCATTGAGCCTCACTCCTTCCAAGGGCTCCGCTTCTACGCGTGTCAA  
 TGTGTCTCAGAACCTGCTGGAACCTTTGGAAGAGAATGTCTTCTCCTCCCTAGGGCTCTGGAGGCTTG  
 AGCATTAAACAACAACCTCTGGCCTGTGACTGCCGCTTCTCTGGATCTTGACGCGACAGCCACCCTGC  
 AGTTTGGTGGCCAGCAACCTATGTGTGCTGGCCAGACACCATCCGTGAGAGGCTTTTCAAGGATTTCCA  
 TAGCACTGCCCTTTCTTTTACTTTACCTGCAAAAAACCCAAAATCCCGTAAAAGAAGTTGCAGCATCTG  
 CTAGTAGATGAAGGGCAGACAGTCCAGCTAGAATGCAAGTGCAGATGGAGACCCGAGCCTGTGATTTCT  
 GGGTGACACCCGAAGGCGTTTTCATCACCACCAAGTCCAATGGAAGAGCCACCCTGTTGGGTGATGGCAC  
 CTTGGAATCCGCTTTGCCAGGATCAAGACAGCGGGATGATGTTTGCATCGTAGCAATGCTGCTGGG  
 AATGATACCTTACAGCCTCCTTAACTGTGAAAGGATTCGCTTCAGATCGTTTTCTTTATGCGAACAGGA  
 CCCCTATGTACATGACCGACTCCAATGACACCATTTCCAATGGCACCAATGCCAATACTTTTTCCCTGGA  
 CCTTAAAAAATACTGGTGTCTACAGCTATGGGCTGCTTACATTCCTGGGAGTGGTTTTATTTGTTTT  
 CTTCTCCTTTTTGTGTGGAGCCGAGGAAAGGCAAGCACAAAAACAGCATTGACCTTGAGTATGTGCCCA  
 GAAAAACAATGGTGTGTTGTGGAAGGAGAGGTAGCTGGACCCAGGAGTTCAACATGAAAATGATT

AG**GCGACCG**ACGCGTACGCGGCCGCTCGAGCAGAACTCATCTCAGAAGAGGATCTGGCAGCAAATGATATCC  
 TGGATTACAAGGATGACGACGATAAGGTTTAA

**Protein Sequence:**

>RC214465 representing NM\_152570  
 Red=Cloning site Green=Tags(s)

MLHTAISCWQPFLLGLAVVLIIFMGSTIGPCARCECSAQNKSVSCHRRRLIAIPEGIPIETKILDLSKNRLK  
 SVNPEEFISYPLLEEIDLSNIIANVEPGAFNNLFLNLSLRKGNRLKLVPLGVFTGLSNLTKLDISENK  
 IVILLDYMFDLHNLKSLEVDNDLVYISHRAFSGLLSLEQLTLEKCNLTAVPTEALSHLRSLISLHLKH  
 LNINMPVYAFKRLFHLKHEIDYWPLDMMPANSLYGLNLTSLSVTNTNLSTVPFLAFKHLVYLTHLNL  
 SYNPISTIEAGMFDLIRLQELHIVGAQLRTIEPHSFQGLRFLRVLNVSQNLLETLEENVFSSPRALEVL  
 SINNNPLACDCRLLWILQRQPTLQFGGQPPMCAGPDTIRERSFKDFHSTALSFYFTCKKPKIREKKLQHL  
 LVDEGQTVQLECSADGDPQPVISWVTPRRRFITTKSNGRATVLDGDTLEIRFAQDQDSGMYVCIASNAAG  
 NDFTTASLTVKGFASDRFLYANRTPMYMTSDNTISNGTNANTFSLDLKTIILVSTAMGCFTFLGVVLFCE  
 LLLFVWSRGGKHKNSIDLEYVPRKNGAVVEGEVAGPRRFNMKMI

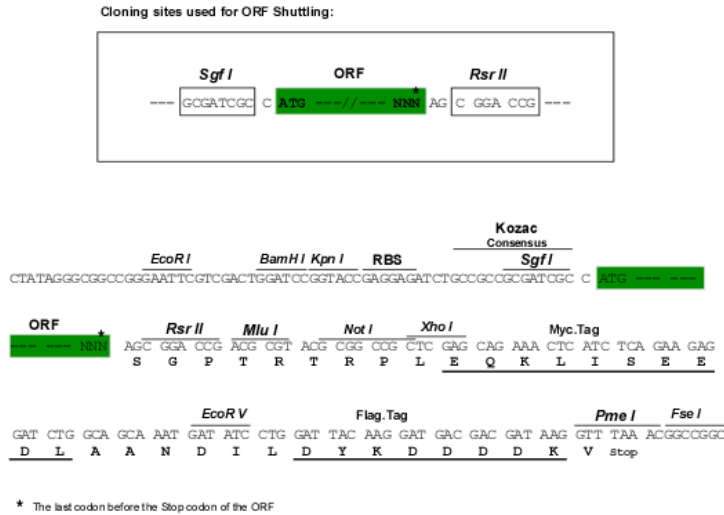
SGP**TRRRLEQKLI**SEEDLAANDILDYKDDDDKV

**Chromatograms:**

[https://cdn.origene.com/chromatograms/ja1399\\_e09.zip](https://cdn.origene.com/chromatograms/ja1399_e09.zip)

Restriction Sites: SgfI-RsrII

Cloning Scheme:



ACCN: NM\_152570

ORF Size: 1818 bp

OTI Disclaimer: The molecular sequence of this clone aligns with the gene accession number as a point of reference only. However, individual transcript sequences of the same gene can differ through naturally occurring variations (e.g. polymorphisms), each with its own valid existence. This clone is substantially in agreement with the reference, but a complete review of all prevailing variants is recommended prior to use. [More info](#)

OTI Annotation: This clone was engineered to express the complete ORF with an expression tag. Expression varies depending on the nature of the gene.

Components: The ORF clone is ion-exchange column purified and shipped in a 2D barcoded Matrix tube containing 10ug of transfection-ready, dried plasmid DNA (reconstitute with 100 ul of water).

Reconstitution Method:

1. Centrifuge at 5,000xg for 5min.
2. Carefully open the tube and add 100ul of sterile water to dissolve the DNA.
3. Close the tube and incubate for 10 minutes at room temperature.
4. Briefly vortex the tube and then do a quick spin (less than 5000xg) to concentrate the liquid at the bottom.
5. Store the suspended plasmid at -20°C. The DNA is stable for at least one year from date of shipping when stored at -20°C.

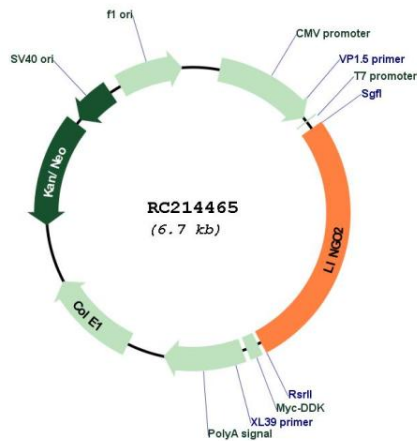
RefSeq: [NM\\_152570.1](#), [NP\\_689783.1](#)

RefSeq Size: 2792 bp

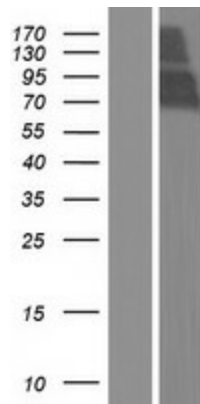
RefSeq ORF: 1821 bp

Locus ID: 158038

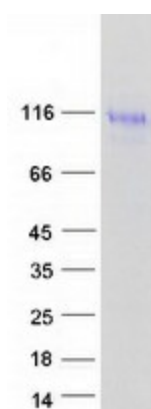
**UniProt ID:** [Q7L985](#)  
**Cytogenetics:** 9p21.2-p21.1  
**Domains:** LRRNT, LRRCT, LRR, ig  
**Protein Families:** Druggable Genome, Transmembrane  
**MW:** 67.9 kDa

**Product images:**


Circular map for RC214465



Western blot validation of overexpression lysate (Cat# [LY407440]) using anti-DDK antibody (Cat# [TA50011-100]). Left: Cell lysates from untransfected HEK293T cells; Right: Cell lysates from HEK293T cells transfected with RC214465 using transfection reagent MegaTran 2.0 (Cat# [TT210002]).



Coomassie blue staining of purified LINGO2 protein (Cat# [TP314465]). The protein was produced from HEK293T cells transfected with LINGO2 cDNA clone (Cat# RC214465) using MegaTran 2.0 (Cat# [TT210002]).