

Product datasheet for RC214457

AKR1CL1 (AKR1C8P) (NM_001007536) Human Tagged ORF Clone

Product data:

Product Type:	Expression Plasmids
Product Name:	AKR1CL1 (AKR1C8P) (NM_001007536) Human Tagged ORF Clone
Tag:	Myc-DDK
Symbol:	AKR1CL1
Synonyms:	aldo-keto reductase family 1, member C-like 1; FLJ16347; protein RAKc
Mammalian Cell Selection:	Neomycin
Vector:	pCMV6-Entry (PS100001)
E. coli Selection:	Kanamycin (25 ug/mL)
ORF Nucleotide Sequence:	>RC214457 representing NM_001007536 Red=Cloning site Blue=ORF Green=Tags(s) TTTTGTAATACGACTCACTATAGGGCGCCGGAATTCGTCGACTGGATCCGGTACCGAGGAGATCTGCCGCCCGCATCGCC ATGATGACGGATCTGAAGCAAAGCCATTTCAGTGAGGCTGAATGATGGACCCTTCATGCCAGTGCTGGGATTTGGCACTTATGCTCCTGATCATACTCCCAAAGCCAGGCTGCCGAGGCCACCAAAGTGGCTATTGACGTAGGCTCCGCCATATTGATTCAGCATACTTATACCAAATGAGGAGGAGTTGGACAGGCCATTTGGGAGAAGATCGCTGATGGTACCGTCAAGAGAGAGAAATATTCTACCCATCAAGCTTTGGCTACTTTCTTTGGCAGAATTGGTTCACCCGGCCCTAGAAAGGTCCTGAAGAACTTGGACCGGACTATGTAGATCTCTTCATTATTCATGTACCATTGCTATGAAGGTTCTTCC ACGCGTACGCGGCCGCTCGAGCAGAACTCATCTCAGAAGAGGATCTGGCAGCAAATGATATCCTGGATTACAAGGATGACGACGATAAGGTTTAA >RC214457 representing NM_001007536 Red=Cloning site Green=Tags(s) MMTDLKQSHSVRLNDGPFMPVLFVGFYAPDHTPKSQAAEATKVAIDVGFRLHDSAYLYQNEEEVQAIWEKIADGTVKREEIFYTIKLVATFFRAELVHPALERSLKKLGPDYVDFIIHVPFAMKGS TRTRPLEQKLI SEEDLAANDILDYKDDDDKV
Protein Sequence:	>RC214457 representing NM_001007536 Red=Cloning site Green=Tags(s) MMTDLKQSHSVRLNDGPFMPVLFVGFYAPDHTPKSQAAEATKVAIDVGFRLHDSAYLYQNEEEVQAIWEKIADGTVKREEIFYTIKLVATFFRAELVHPALERSLKKLGPDYVDFIIHVPFAMKGS TRTRPLEQKLI SEEDLAANDILDYKDDDDKV
Chromatograms:	https://cdn.origene.com/chromatograms/mg3516_e03.zip
Restriction Sites:	SgfI-MluI



View online »

Cloning Scheme:


ACCN: NM_001007536

ORF Size: 387 bp

OTI Disclaimer: The molecular sequence of this clone aligns with the gene accession number as a point of reference only. However, individual transcript sequences of the same gene can differ through naturally occurring variations (e.g. polymorphisms), each with its own valid existence. This clone is substantially in agreement with the reference, but a complete review of all prevailing variants is recommended prior to use. [More info](#)

OTI Annotation: This clone was engineered to express the complete ORF with an expression tag. Expression varies depending on the nature of the gene.

Components: The ORF clone is ion-exchange column purified and shipped in a 2D barcoded Matrix tube containing 10ug of transfection-ready, dried plasmid DNA (reconstitute with 100 ul of water).

- Reconstitution Method:**
1. Centrifuge at 5,000xg for 5min.
 2. Carefully open the tube and add 100ul of sterile water to dissolve the DNA.
 3. Close the tube and incubate for 10 minutes at room temperature.
 4. Briefly vortex the tube and then do a quick spin (less than 5000xg) to concentrate the liquid at the bottom.
 5. Store the suspended plasmid at -20°C. The DNA is stable for at least one year from date of shipping when stored at -20°C.

RefSeq: [NM_001007536.3](#)

RefSeq Size: 2184 bp

RefSeq ORF: 389 bp

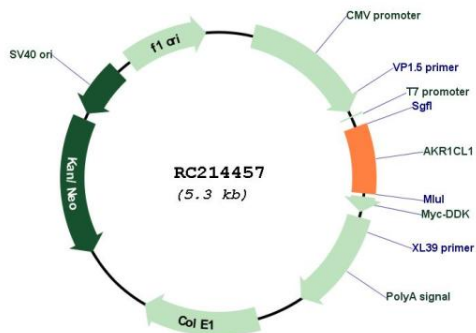
Locus ID: 340811

Cytogenetics: 10p15.1

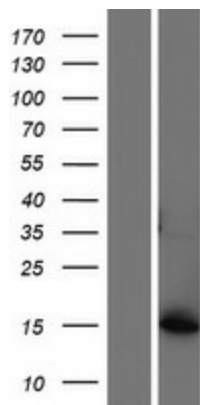
Protein Families: Druggable Genome

MW: 14.4 kDa

Product images:



Circular map for RC214457



Western blot validation of overexpression lysate (Cat# [LY423503]) using anti-DDK antibody (Cat# [TA50011-100]). Left: Cell lysates from untransfected HEK293T cells; Right: Cell lysates from HEK293T cells transfected with RC214457 using transfection reagent MegaTran 2.0 (Cat# [TT210002]).