

Product datasheet for **RC214452**

DUSP16 (NM_030640) Human Tagged ORF Clone

Product data:

Product Type:	Expression Plasmids
Product Name:	DUSP16 (NM_030640) Human Tagged ORF Clone
Tag:	Myc-DDK
Symbol:	DUSP16
Synonyms:	MKP-7; MKP7
Mammalian Cell Selection:	Neomycin
Vector:	pCMV6-Entry (PS100001)
E. coli Selection:	Kanamycin (25 ug/mL)



[View online »](#)

ORF Nucleotide
Sequence:

>RC214452 ORF sequence
Red=Cloning site Blue=ORF Green=Tags(s)

TTTTGTAATACGACTCACTATAGGGCGGCCGGGAATTCGTCGACTGGATCCGGTACCGAGGAGATCTGCC
GCCGCGATCGCC

ATGGCCCATGAGATGATTGGAAC TCAAATGT TACTGAGAGGTTGGTGGCTCTGCTG GAAAGTGGAAACGG
AAAAAGTCTGCTAATTGATAGCCGCCATTTGTGGAATACAATACATCCACATTTTGGAAAGCCATTAA
TATCAACTGCTCCAAGCTTATGAAGCGAAGGTTGCAACAGGACAAAGTGTTAATTACAGAGCTCATCCAG
CATTACAGCGAAACATAAGGTTGACATTGATTGCAGTCAGAAGGTTGTAGTTTACGATCAAAGCTCCCAAG
ATGTTGCCTCTCTCTTTCAGACTGTTTTCTCACTGTACTTCTGGGTA AACTGGAGAAGAGCTTCAACTC
TGTTACCTGCTTGCAGGTGGGTTTGTGAGTTCTCTCGTTGTTTCCCTGGCCTCTGTGAAGGAAAAATCC
ACTCTAGTCCCTACCTGCATTTCTCAGCCTTGCTTACCTGTTGCCAACATTGGGCCAACCCGAATTCTTC
CCAATCTTTATCTTGGCTGCCAGCGAGATGCTCAACAAGGAGCTGATGCAGCAGAATGGGATTGGTTA
TGTGTTAAATGCCAGCAATACCTGTCCAAGCCTGACTTTATCCCGAGTCTATTTCTCGGTGTGCCT
GTGAATGACAGCTTTTGTGAGAAAAATTTGCCGTGGTTGGACAAATCAGTAGATTTTCATTGAGAAAGCAA
AAGCCTCCAATGGATGTGTTCTAGTGCAGTGTTAGCTGGGATCTCCCGCTCCGCCACCATCGCTATCGC
CTACATCATGAAGAGGATGGACATGTCTTTAGATGAAGCTTACAGATTTGTGAAAGAAAAAGACCTACT
ATATCTCCAAACTTCAATTTTCTGGGCCAACTCCTGGACTATGAGAAGAAGATTAAGAACCAGACTGGAG
CATCAGGGCCAAAGAGCAAAC TCAAGCTGCTGCACCTGGAGAAGCCAAATGAACCTGTCCCTGCTGTCTC
AGAGGGTGGACAGAAAAGCGAGACGCCCTCAGTCCACCCTGTGCCGACTCTGCTACCTCAGAGGCGACA
GGACAAAGGCCCGTGCATCCCGCCAGCGTGCCAGCGTGCCAGCGTGCAGCCGTCGCTGTTAGAGGACA
GCCCGCTGGTACAGGCGCTCAGTGGCTGCACCTGTCCGACAGCAGGCTGGAAGACAGCAATAAGCTCAA
GGTTCTCTCTCTGGATATCAAATCAGTTTCATATTACGCCAGCATGGCAGCATCCTTACATGGCTTC
TCCTCATCAGAAGATGCTTTGGAATACTACAAACCTTCCACTACTCTGGATGGGACCAACAAGCTATGCC
AGTTCTCCCTGTTT CAGGAACTATCGGAGCAGACTCCC GAAACCAGTCTGATAAGGAGGAAGCCAGCAT
CCCCAAGAAGCTGCAGACTGCCAGGCCTT CAGACAGCCAGAGCAAGCGATTGCATTTCGGTCAGAACCAGC
AGCAGTGGCACC GCCCAGAGGTCCTTTTATCTCCACTGCTTCGAAGTGGGAGCGTGGAGGACAATTACC
ACACCAGTTCCTTTTCGGCCTTTCCACCAGCCAGCAGCACCTCACGAAGTCTGCTGGCCTGGGCCTTAA
GGGCTGGCACTCGGATATCTTGGCCCCCAGACCTTACCCTTCCCTGACCAGCAGCTGGTATTTT GCC
ACAGAGTCTCTCACTTCTACTCTGCCTCAGCCATCTACGGAGGCAGTGCAGTTACTCTGCCTACAGCT
GCAGCCAGCTGCCCACTTGC GGAGACCAAGTCTATTCTGTGCGCAGGCGGCAGAAGCCAAGTGCAGAGC
TGA CTGCGGCGGAGCTGGCATGAAGAGAGCCCTTTGAAAAGCAGTTTAAACGCAGAAGCTGCCAAATG
GAATTTGGAGAGAGCATCATGT CAGAGAACAGGTCACGGGAAGAGCTGGGGAAAGTGGGCAGTCAGTCTA
GCTTTTCGGGCAGCATGGAAATCATTGAGGTCTCC

ACGCGTACGCGGCCGCTCGAGCAGAAACTCATCTCAGAAGAGGATCTGGCAGCAAATGATATCCTGGATT
ACAAGGATGACGACGATAAGGTTTAA

Reconstitution Method:

1. Centrifuge at 5,000xg for 5min.
2. Carefully open the tube and add 100ul of sterile water to dissolve the DNA.
3. Close the tube and incubate for 10 minutes at room temperature.
4. Briefly vortex the tube and then do a quick spin (less than 5000xg) to concentrate the liquid at the bottom.
5. Store the suspended plasmid at -20°C. The DNA is stable for at least one year from date of shipping when stored at -20°C.

RefSeq: [NM_030640.3](#)

RefSeq Size: 6312 bp

RefSeq ORF: 1998 bp

Locus ID: 80824

UniProt ID: [Q9BY84](#)

Cytogenetics: 12p13.2

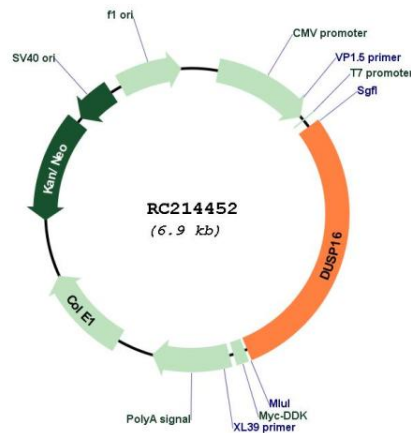
Protein Families: Druggable Genome, Phosphatase

Protein Pathways: MAPK signaling pathway

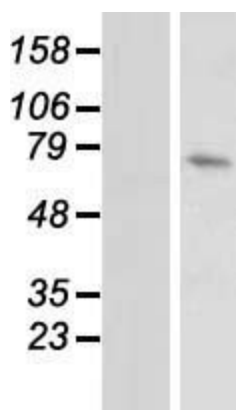
MW: 73.1 kDa

Gene Summary: This gene encodes a mitogen-activated protein kinase phosphatase that is a member of the dual specificity protein phosphatase subfamily. These phosphatases inactivate their target kinases by dephosphorylating both the phosphoserine/threonine and phosphotyrosine residues. The encoded protein specifically regulates the c-Jun amino-terminal kinase (JNK) and extracellular signal-regulated kinase (ERK) pathways.[provided by RefSeq, May 2010]

Product images:



Circular map for RC214452



Western blot validation of overexpression lysate (Cat# [LY410762]) using anti-DDK antibody (Cat# [TA50011-100]). Left: Cell lysates from untransfected HEK293T cells; Right: Cell lysates from HEK293T cells transfected with RC214452 using transfection reagent MegaTran 2.0 (Cat# [TT210002]).