

Product datasheet for **RC214451**

CYLD (NM_001042412) Human Tagged ORF Clone

Product data:

Product Type:	Expression Plasmids
Product Name:	CYLD (NM_001042412) Human Tagged ORF Clone
Tag:	Myc-DDK
Symbol:	CYLD
Synonyms:	BRSS; CDMT; CYLD1; CYLDI; EAC; FTDALS8; MFT; MFT1; SBS; TEM; USPL2
Mammalian Cell Selection:	Neomycin
Vector:	pCMV6-Entry (PS100001)
E. coli Selection:	Kanamycin (25 ug/mL)



[View online »](#)

ORF Nucleotide Sequence:

>RC214451 ORF sequence
 Red=Cloning site Blue=ORF Green=Tags(s)

TTTTGTAATACGACTCACTATAGGGCGGCCGGAATTCGTCGACTGGATCCGGTACCGAGGAGATCTGCC
 GCC**CGGATCGCC**

ATGAGTTCAGGCTTATGGAGCCAAGAAAAGTCACCTTACCCTACTGGGAAGAGCGGATTTTTACTTGC
 TTCTTCAAGAATGCAGCGTTACAGACAAAACAAAACAAAAGCTCCTTAAAGTACCGAAGGGAAGTATAGG
 ACAGTATATTCAAGATCGTTCTGTGGGGCATTCAAGATTCTTCTGCAAAAGGCAAGAAAAATCAGATT
 GGATTAATAAATCTAGAGCAACCTCATGCAGTTCTTTTGTGATGAAAAGGATGTTGTAGAGATAAATG
 AAAAGTTCACAGAGTTACTTTTGGCAATTACCAATTGTGAGGAGAGGTTTCAGCCTGTTTAAAAACAGAAA
 CAGACTAAGTAAAGGCCTCCAAATAGACGTGGGCTGTCTGTGAAAGTACAGCTGAGATCTGGGGAAGAA
 AAATTTCTGGAGTTGTACGCTTACAGGACCCCTGTTAGCAGAGAGGACAGTCTCCGGAATATTCTTTG
 GAGTTGAATTGCTGGAAGAAGGTCGTGGTCAAGGTTTCACTGACGGGGTGTACCAAGGGAACAGCTTTT
 TCAGTGTGATGAAGATTGTGGCGTGTGTTGTCATTGGACAAGCTAGAAGTATAGAAAGTATGACT
 GCATTGGAAGTATTACGCAGGTCCTGGGACACAATGCAGGTCGAACTTCTCTTTGGAATAAAT
 CCAGAGTTTCTTTGAAGTTGGAGAAAACAATAGAATCTGGAACAGTTATATTCTGTGATGTTTTGCCAGG
 AAAAGAAAGCTTAGGATATTTTGTGGTGTGGACATGGATAACCCATTGGCAACTGGGATGGAAGATTT
 GATGGAGTGCAGCTTTGTAGTTTTCGTGTGTTGAAAGTACAATTCTATTGCACATCAATGATATCATCC
 CAGAGAGTGTGACGCAGGAAAGGAGGCCTCCAAAATTGCCTTTATGTCAAGAGGTGTTGGGGACAAAGG
 TTCATCCAGTCATAATAAACCAAGGCTACAGGATCTACCTCAGACCCGGAAAATAGAAACAGATCTGAA
 TTATTTTATACCTTAAATGGGCTTCTGTTGACTCACACCACAATCCAAATCAAAAAATACATGGTACA
 TTGATGAAGTTGCAGAAGACCCTGCAAAATCTCTTACAGAGATATCTACAGACTTTGACCGTTCTTCCAC
 ACCACTCCAGCCTCCTCCTGTGAACCTCACTGACCACCGAAGACAGATTCCACTCTTTACCATTAGTCTC
 ACCAAGATGCCAATACCAATGGAAGTATTGGCCACAGTCCACTTTCTCTGTGAGCCAGTCTGTATGG
 AAGAGCTAAACACTGCACCCGTCGAAGAGTCCACCCTTGGCCATGCCTCCTGGGAACACATGGTCT
 AGAAGTGGGCTCATTGGCTGAAGTTAAGGAGAACCCTCCTTTCTATGGGGTAATCCGTTGGATCGGTGAG
 CCACCAGGACTGAATGAAGTGTGCTGGACTGGAAGTGAAGTGTGAGGCTGTACGGATGGAA
 CCTTCAGAGGCACTCGGTATTTACCTGTGCCCTGAAGAAGGCGCTGTTGTGAAACTGAAGAGCTGCAG
 GCCTGACTCTAGGTTTGCATCATTGCAGCCGTTTCCAATCAGATTGAGCGCTGTAACCTTTTAGCATT
 GGAGGCTACTTAAAGTGAAGTAGTAGAAGAAAATCTCCACCAAAAATGGAAAAAGAGGCTTGGAGATAA
 TGATTGGGAAGAAGAAAGGCATCCAGGGTCATTACAATCTTGTACTTAGACTCAACCTTATTCTGCTT
 ATTTGCTTTTGTGTTCTGTTCTGGACACTGTGTTACTTAGACCCAAAGAAAAGAACGATGTAGAATATTAT
 AGTGAAACCAAGAGCTACTGAGGACAGAAATTGTTAATCCTCTGAGAATATATGGATATGTGTGTGCCA
 CAAAAATTATGAAACTGAGGAAAATACTTGAAGGTTGGAGGCTGCATCAGGATTTACCTCTGAAGAAA
 AGATCCTGAGGAATCTTGAATATTCTGTTTATCATATTTTAAAGGTAGAACCTTTGCTAAAAATAAGA
 TCAGCAGGTCAAAGGTACAAGATTGTTACTTCTATCAAATTTTATGGAAAAAATGAGAAAGTTGGCG
 TTCCACAATTCAGCAGTTGTTAGAATGGTCTTTTATCAACAGTAACCTGAAATTTGCAGAGGCACCATC
 ATGTCTGATTATTCAGATGCCTCGATTTGGAAAAGACTTTAAACTATTTAAAAAATTTTCTTCTCTG
 GAATTAATAACAGATTTACTTGAAGACACTCCAGACAGTCCGGATATGTGGAGGCTTGCATGT
 ATGAGTGTAGAGAATGCTACGACGATCCGACATCTCAGCTGGAAAAATCAAGCAGTTTTGTAAAACCTG
 CAACACTCAAGTCCACCTTATCCGAAGAGGCTGAATCATAAATAAACCAGTGTCACTTCCAAAGAC
 TTACCCGACTGGGACTGGAGACACGGCTGCATCCCTTGCAGAAATATGGAGTTATTTGCTGTTCTCTGCA
 TAGAAACAAGCCACTATGTTGCTTTTGTGAAGTATGGGAAGGACGATTCTGCCTGGCTCTCTTTGACAG
 CATGGCCGATCGGGATGGTGGTCAAGTGGCTTCAACATTCCTCAAGTACCCCCATGCCAGAAGTAGGA
 GAGTACTTGAAGATGTCTCTGGAAGACCTGCATTCCTTGGACTCCAGGAGAAATCCAAGGCTGTGCACGAA
 GACTGCTTTGTGATGCATATATGTGCATGTACCAGAGTCCAACAATGAGTTTGTACAAA

ACGCGTACGCGGCCGCTCGAGCAGAAACTCATCTCAGAAGAGGATCTGGCAGCAAATGATATCCTGGATT
 ACAAGGATGACGACGATAAGGTTTAA

Protein Sequence: >RC214451 protein sequence
 Red=Cloning site Green=Tags(s)

MSSGLWSQEKVTSFYWEERIFYLLQECVTDKQTQKLLKVPKGSIGQYIQDRSVGHSRIPSAKGGKKNQI
 GLKILEQPHAVLFVDEKDVVEINEKFTPELLLAITNCEERFSLFKNRNRLSKGLQIDVGCYKVKQLRSGEE
 KFPQGVVFRGPLLAERTVSGIFFGVELLEEGRGGFTDGVYQKQLFQCEDEDCGVFVALDKLELIEDDDT
 ALESDYAGPGDVMQVELPPLLEINSRVSLKVGETIESGTVIFCDVLPKESLGYFVGVMDNPIGNWDGRF
 DGVQLCSFACVESTILLHINDIIPESVTQERRPKLAFMSRGGVGDGSSSHNKPATGSTDGPNRNRSE
 LFYTLNGSSVDSQPQSKSKNTWYIDEVAEDPAKSLTEISTDFDRSSPPLQPPVNSLTENRFHSLPFSL
 TKMPNTNGSIGHSPLSLSAQSVMEELNAPVQESPLAMPNGSHGLEVGSLAEVKNPPFYGVIRWIGQ
 PPGLNEVLAGLELEDECAGCTDGTFRGTRYFTCALKKALFVKLKSCRPSRFASLQPVSNQIERCNLAF
 GGYLSEVVEENTPPKMEKEGLEIMIGKKKGIQGHYNVSCYLDSTLFCFAFSSVLDTVLLRPKEKNDVEYY
 SETQELLRTEIVNPLRIYGYVCATKIMKLRKILEKVEAASGFTSEEKPEEFNLILFHHILRVEPLLKIR
 SAGQKVQDCYFYQIFMEKNEKVGVPYTIQQLLEWSFINSNLKFAEAPSCLIIQMPRFQKDFKFKIFPSL
 ELNITDLLEDTPRQCRICGLAMYECRECYDDPDI SAGKIKQFCKTCNTQVHLHPKRLNHNKYNPVS LPKD
 LPDWDWRHGCIPQNMELFAVLCIETSHYVAFVKYGGKDDSAWLFDSMADRDRGGQNGFNIPQVTPCEVGE
 EYLKMSLEDLHSLDSRRIQGCARRLLCDAYMCMYQSPTMSLYK

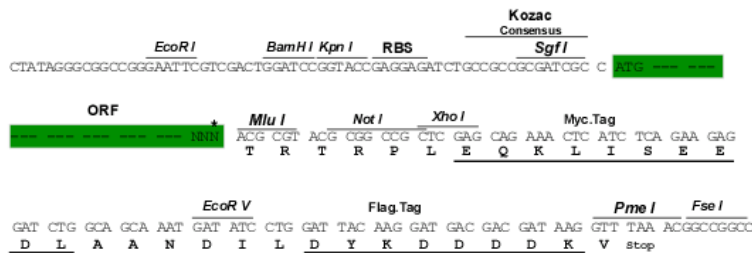
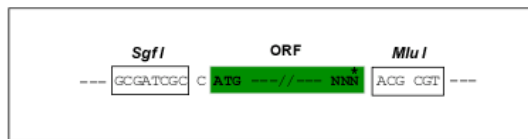
TRTRPLEQKLISEEDLAANDILDYKDDDDKV

Chromatograms: https://cdn.origene.com/chromatograms/mk6690_b03.zip

Restriction Sites: SgfI-MluI

Cloning Scheme:

Cloning sites used for ORF Shuttling:



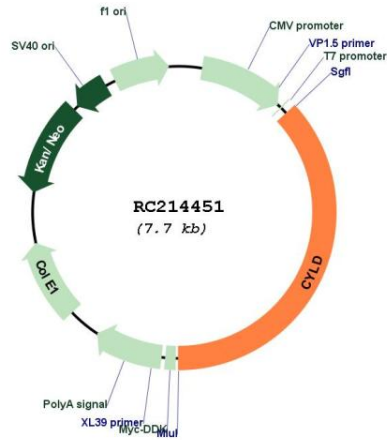
* The last codon before the Stop codon of the ORF

ACCN: NM_001042412

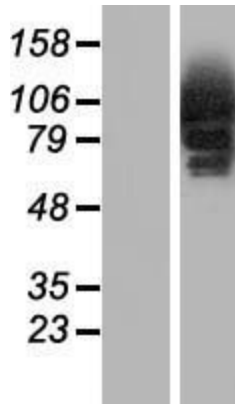
ORF Size: 2859 bp

OTI Disclaimer:	The molecular sequence of this clone aligns with the gene accession number as a point of reference only. However, individual transcript sequences of the same gene can differ through naturally occurring variations (e.g. polymorphisms), each with its own valid existence. This clone is substantially in agreement with the reference, but a complete review of all prevailing variants is recommended prior to use. More info
OTI Annotation:	This clone was engineered to express the complete ORF with an expression tag. Expression varies depending on the nature of the gene.
Components:	The ORF clone is ion-exchange column purified and shipped in a 2D barcoded Matrix tube containing 10ug of transfection-ready, dried plasmid DNA (reconstitute with 100 ul of water).
Reconstitution Method:	<ol style="list-style-type: none">1. Centrifuge at 5,000xg for 5min.2. Carefully open the tube and add 100ul of sterile water to dissolve the DNA.3. Close the tube and incubate for 10 minutes at room temperature.4. Briefly vortex the tube and then do a quick spin (less than 5000xg) to concentrate the liquid at the bottom.5. Store the suspended plasmid at -20°C. The DNA is stable for at least one year from date of shipping when stored at -20°C.
RefSeq:	NM_001042412.3
RefSeq Size:	8608 bp
RefSeq ORF:	2862 bp
Locus ID:	1540
UniProt ID:	Q9NQZ7
Cytogenetics:	16q12.1
Protein Families:	Druggable Genome
Protein Pathways:	RIG-I-like receptor signaling pathway
MW:	107 kDa
Gene Summary:	This gene encodes a cytoplasmic protein with three cytoskeletal-associated protein-glycine-conserved (CAP-GLY) domains that functions as a deubiquitinating enzyme. Mutations in this gene have been associated with cylindromatosis, multiple familial trichoepithelioma, and Brooke-Spiegler syndrome. Alternate transcriptional splice variants, encoding different isoforms, have been characterized. [provided by RefSeq, Jul 2008]

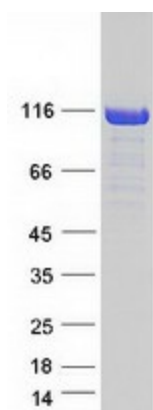
Product images:



Circular map for RC214451



Western blot validation of overexpression lysate (Cat# [LY420886]) using anti-DDK antibody (Cat# [TA50011-100]). Left: Cell lysates from untransfected HEK293T cells; Right: Cell lysates from HEK293T cells transfected with RC214451 using transfection reagent MegaTran 2.0 (Cat# [TT210002]).



Coomassie blue staining of purified CYLD protein (Cat# [TP314451]). The protein was produced from HEK293T cells transfected with CYLD cDNA clone (Cat# RC214451) using MegaTran 2.0 (Cat# [TT210002]).